

CONSERVATION DIVISION

P. O. BOX 2088

SANTA FE, NEW MEXICO 87501

All distances must be from the outer boundaries of the Section.

STATE OF NEW MEXICO

ENERGY AND MINERALS DEPARTMENT

RECEIVED BY

OCT 11 1983

Form C-102

Revised 10-1-78

Operator

Ralph Nix Oil Inc.

Lease

Fedell

O. C. D.

Well No.

#2

Init Letter

G

Section

35

Township

18S.

Range

26 E.

County

Eddy

Actual Footage Location of Well:

1650

feet from the

North

line and

2310

feet from the

East

line

Ground Level Elev.

3307

Producing Formation

GLORIETA/YESO

Pool

ATOKA

Dedicated Acreage:

40

Acres

1. Outline the acreage dedicated to the subject well by colored pencil or hatchure marks on the plat below.

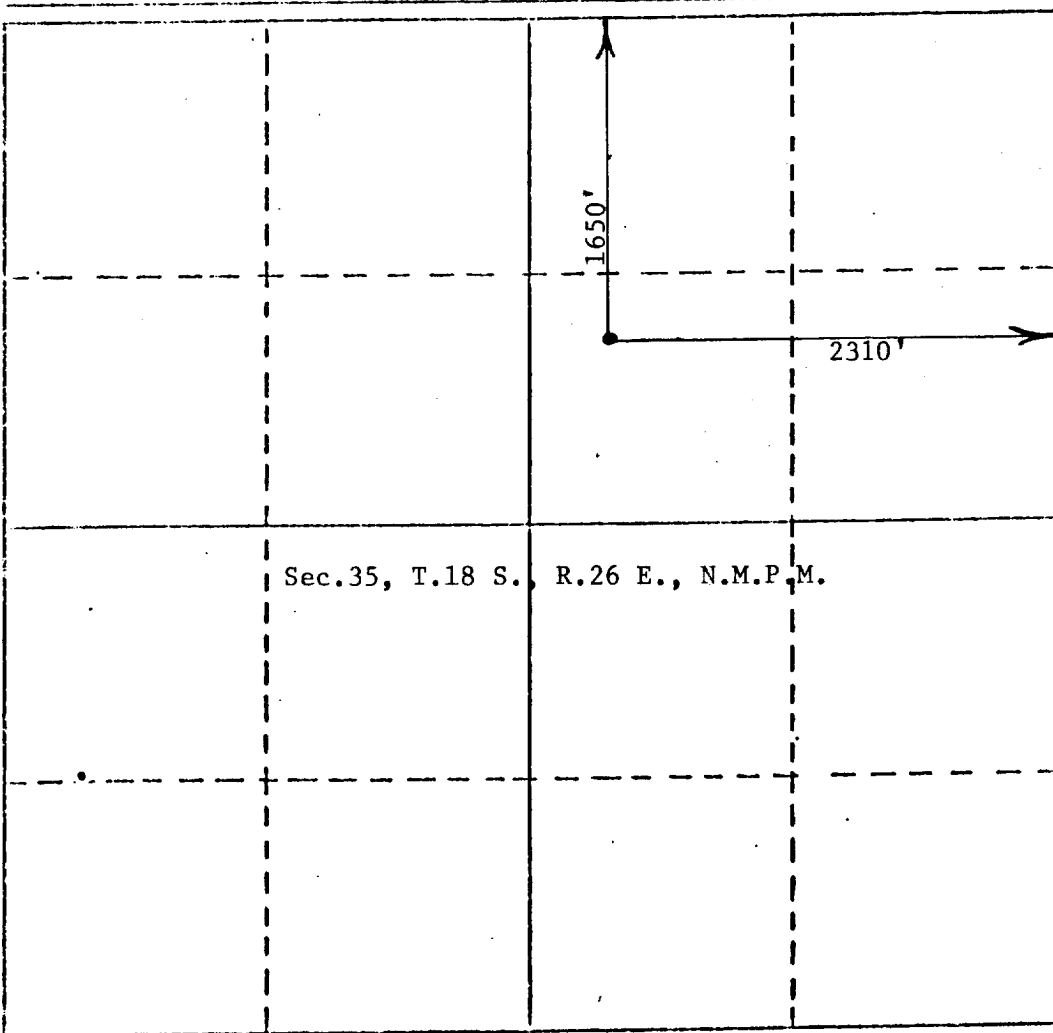
2. If more than one lease is dedicated to the well, outline each and identify the ownership thereof (both as to working interest and royalty).

3. If more than one lease of different ownership is dedicated to the well, have the interests of all owners been consolidated by communitization, unitization, force-pooling, etc?

☐ Yes ☐ No If answer is "yes," type of consolidation _____

If answer is "no," list the owners and tract descriptions which have actually been consolidated. (Use reverse side of this form if necessary.) _____

No allowable will be assigned to the well until all interests have been consolidated (by communitization, unitization, forced-pooling, or otherwise) or until a non-standard unit, eliminating such interests, has been approved by the Division.



CERTIFICATION

I hereby certify that the information contained herein is true and complete to the best of my knowledge and belief.

Name

RALPH NIX JR

Position

Company

RALPH NIX

Date

10-11-83

I hereby certify that the well location shown on this plat was plotted from field notes of actual surveys made by me or under my supervision, and that the same is true and correct to the best of my knowledge and belief.

Date Surveyed

Oct. 11, 1983

Registered Professional Surveyor and/or Land Surveyor

John D. Jaques, P.E. & L.S.

Certificate No.

6290