

P. O. BOX 2088
SANTA FE, NEW MEXICO 87501

OCT 21 1983

O. C. D.
ARTESIA, OFFICE

5A. Indicate Type of Lease

STATE ☐ FCC ☒

5. State Oil & Gas Lease No.

APPLICATION FOR PERMIT TO DRILL, DEEPEN, OR PLUG BACK

1a. Type of Work

DRILL ☒DEEPEN ☐PLUG BACK ☐

b. Type of Well

OIL WELL ☒GAS WELL ☐OTHER ☐SINGLE ZONE ☐MULTIPLE ZONE ☐

2. Name of Operator

Yates Petroleum Corporation ✓

3. Address of Operator

207 S. 4th, Artesia, New Mexico 88210

4. Location of Well

UNIT LETTER C

LOCATED 990

FEET FROM THE North

LINE

AND 2310 FEET FROM THE West

LINE OF SEC. 27

TWP. 18S

RCE. 26E

NMPM

7. Unit Agreement Name

8. Farm or Lease Name

Hawkins "GY"

9. Well No.

3

10. Field and Pool, or Wildcat

Atoka/San Andres

17. County

Eddy

11. Elevations (Show whether DF, RT, etc.)

3323' GL

21A. Kind & Status Plug. Bond

Blanket

19. Proposed Depth

appr. 1900'

19A. Formation

San Andres

20. Rotary or C.T.

Rotary

21B. Drilling Contractor

not determined

22. Approx. Date Work will start

ASAP

23.

PROPOSED CASING AND CEMENT PROGRAM

SIZE OF HOLE	SIZE OF CASING	WEIGHT PER FOOT	SETTING DEPTH	SACKS OF CEMENT	EST. TOP
14 1/2"	10 3/4"	32# J-55	360'	200 sx	circulated
9 1/2"	7"	20# J-55	950'	700 sx	circulated
6 1/4"	4 1/2"	9.5# J-55	TD	150 sx	circulated

Propose to drill a San Andres test. Approximately 360' of 10 3/4" casing will be run and cemented to the surface to shut off gravel and caving. 7" casing will be run to 100' below the Artesian Zone and cemented to the surface. A tapered oil string will be run and cemented, perforated and sand frac'd for production.

MUD PROGRAM: FW gel/LCM to 950' (or dry drill), FW to TD.

BOP PROGRAM: BOP's to be installed on 7" casing and tested daily for operational.

APPROVAL VALID FOR 180 DAYS
PERMIT EXPIRES 4-25-84
UNLESS DRILLING UNDERWAY

4. ABOVE SPACE DESCRIBE PROPOSED PROGRAM; IF PROPOSAL IS TO DEEPEN OR PLUG BACK, GIVE DATA ON PRESENT PRODUCTIVE ZONE AND PROPOSED NEW PRODUCTIVE ZONE. GIVE BLOWOUT PREVENTER PROGRAM, IF ANY.

hereby certify that the information above is true and complete to the best of my knowledge and belief.

Signed

Title Regulatory AgentDate 10/21/83

(This space for State Use)

APPROVED BY

TITLE

OIL AND GAS INSPECTOR

DATE

OCT 25 1983

CONDITIONS OF APPROVAL, IF ANY:

Notify N.M.O.C.C. in sufficient
time to witness cementing

the 7 casing

NEW MEXICO OIL CONSERVATION COMMISSION
WELL LOCATION AND ACREAGE DEDICATION PLAT

Form C-102
Supersedes C-128
Effective 1-1-65

All distances must be from the outer boundaries of the Section.

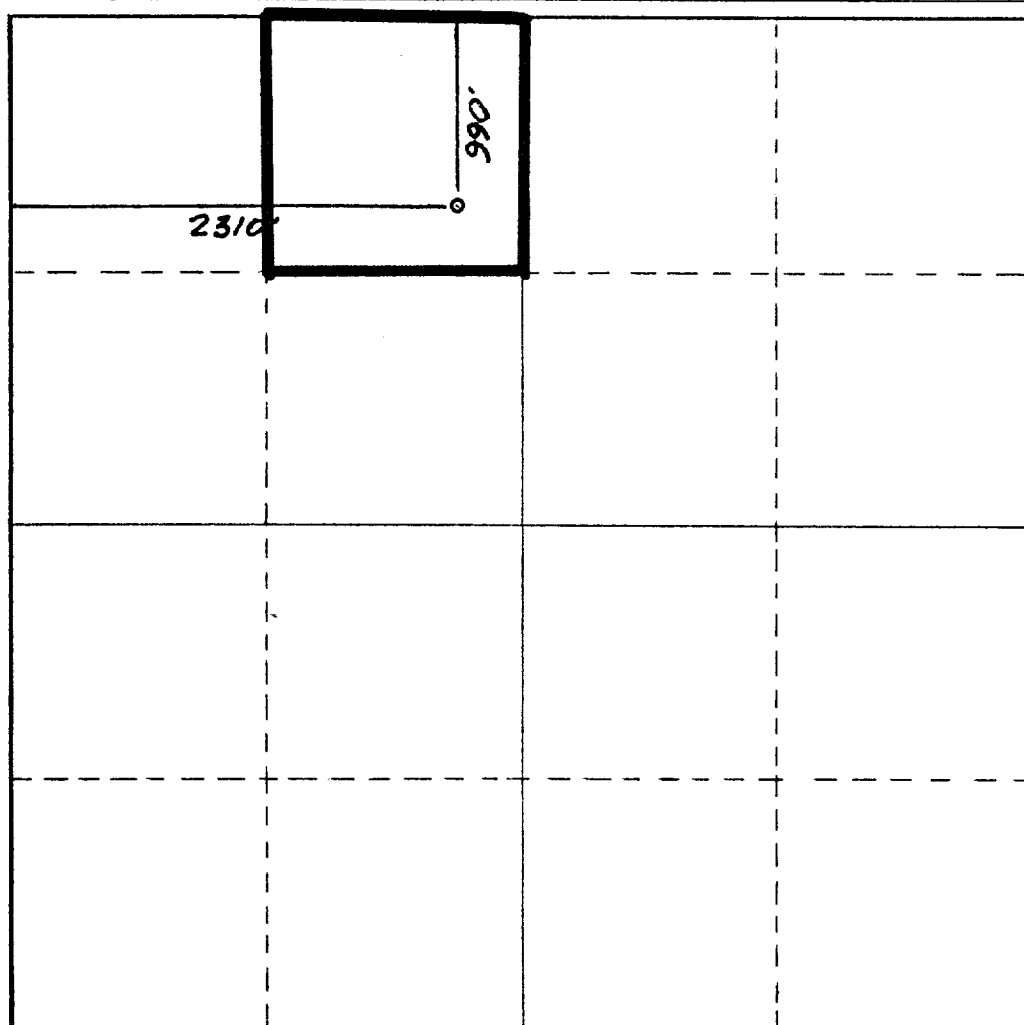
Operator YATES PETROLEUM CORPORATION			Lease Hawkins GY		Well No. 3
Unit Letter C	Section 27	Township 18 South	Range 26 East	County Eddy	
Actual Footage Location of Well: 990 feet from the North line and 2310 feet from the West line					
Ground Level Elev: 3323.	Producing Formation San Andres		Pool A Kota / SAN Andres	Dedicated Acreage: 40 Acres	

1. Outline the acreage dedicated to the subject well by colored pencil or hachure marks on the plat below.
2. If more than one lease is dedicated to the well, outline each and identify the ownership thereof (both as to working interest and royalty).
3. If more than one lease of different ownership is dedicated to the well, have the interests of all owners been consolidated by communitization, unitization, force-pooling, etc?

☐ Yes ☐ No If answer is "yes," type of consolidation _____

If answer is "no," list the owners and tract descriptions which have actually been consolidated. (Use reverse side of this form if necessary.) _____

No allowable will be assigned to the well until all interests have been consolidated (by communitization, unitization, forced-pooling, or otherwise) or until a non-standard unit, eliminating such interests, has been approved by the Commission.



CERTIFICATION

I hereby certify that the information contained herein is true and complete to the best of my knowledge and belief.

Ken Beardemphl

Name

Ken Beardemphl

Position

Regulatory Agent

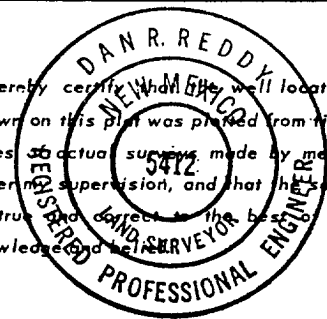
Company

Yates Petroleum Corp.

Date

10/21/83

I hereby certify that the well location shown on this plat was plotted from field notes of actual surveys made by me or under my supervision, and that the same is true and correct to the best of my knowledge and belief.



Date Surveyed

October 16, 1983

Registered Professional Engineer and/or Land Surveyor

Dan R. Reddy

Certificate No.

NM PE&LS #5412

0 330 660 990 1320 1650 1980 2310 2640 2000 1500 1000 500 0

EXHIBIT B

BDP DIAGRAM

RATED 3000[#]

