

RECEIVED
UNITED STATES
DEPARTMENT OF THE INTERIOR

GEOLOGICAL SURVEY

OCT 25 1983

O. C. D.

ARTESIA, OFFICE

APPLICATION FOR PERMIT TO DRILL, DEEPEN, OR PLUG BACK

1a. TYPE OF WORK

DRILL ☒PLUG BACK ☐

b. TYPE OF WELL

OIL
WELL ☒GAS
WELL ☐OTHER ☐SINGLE
ZONE ☒MULTIPLE
ZONE ☐

2. NAME OF OPERATOR

TEXACO INC. ✓

3. ADDRESS OF OPERATOR

P. O. BOX 728, HOBBS, NEW MEXICO 88240

4. LOCATION OF WELL (Report location clearly and in accordance with any State requirements.)*

At surface

2130' FSL AND 990' FEL OF SECTION 28

At proposed prod. zone

14. DISTANCE IN MILES AND DIRECTION FROM NEAREST TOWN OR POST OFFICE*

7 MILES SOUTH OF LOCO HILLS, NEW MEXICO

15. DISTANCE FROM PROPOSED*

LOCATION TO NEAREST
PROPERTY OR LEASE LINE, FT.
(Also to nearest drlg. unit line, if any)

1830'

16. NO. OF ACRES IN LEASE

800

17. NO. OF ACRES ASSIGNED
TO THIS WELL

40

18. DISTANCE FROM PROPOSED LOCATION*

TO NEAREST WELL, DRILLING, COMPLETED,
OR APPLIED FOR, ON THIS LEASE, FT.

450'

19. PROPOSED DEPTH

13,200'

20. ROTARY OR CABLE TOOLS

ROTARY

21. ELEVATIONS (Show whether DF, RT, GR, etc.)

3476.3' GR

22. APPROX. DATE WORK WILL START*

UPON APPROVAL

23.

PROPOSED CASING AND CEMENTING PROGRAM

SIZE OF HOLE	SIZE OF CASING	WEIGHT PER FOOT	SETTING DEPTH	QUANTITY OF CEMENT
17-1/2"	13-3/8"	48#	540'	SUFFICIENT TO CIRCULATE
12-1/4"	9-5/8"	36#, 40#, 43.5#	4000'	1850 SACKS CIRCULATE
8-1/2"	5-1/2"	17#	13,200'	3400 SACKS

AFTER SETTING PRODUCTION CASING, PAY ZONES WILL BE PERFORATED AND
STIMULATED AS NECESSARY.

SEE ATTACHED FOR: SUPPLEMENTAL DRILLING DATA

BOP SKETCH

SURFACE USE AND OPERATIONS PLAN

RECEIVED

OCT 3 1983

IN ABOVE SPACE DESCRIBE PROPOSED PROGRAM: If proposal is to deepen or plug back, give data on present productive zone and proposed new productive zone. If proposal is to drill or deepen directionally, give pertinent data on subsurface locations and measured and oil & gas depths. Give blowout preventer program, if any.

24.

SIGNED

V. G. Johnston

TITLE

Asst. Dist. Mgr.

DATE

9-28-83

(This space for Federal or State office use)

PERMIT NO.

APPROVAL DATE

APPROVED BY

TITLE

DATE

CONDITIONS OF APPROVAL, IF ANY:

*See Instructions On Reverse Side

APPROVAL SUBJECT TO
GENERAL REQUIREMENTS AND
SPECIAL STIPULATIONS
ATTACHED

**NEW MEXICO OIL CONSERVATION COMMISSION
WELL LOCATION AND ACREAGE DEDICATION PLAT**

Form C-102
Supersedes C-128
Effective 1-1-85

All distances must be from the outer boundaries of the Section

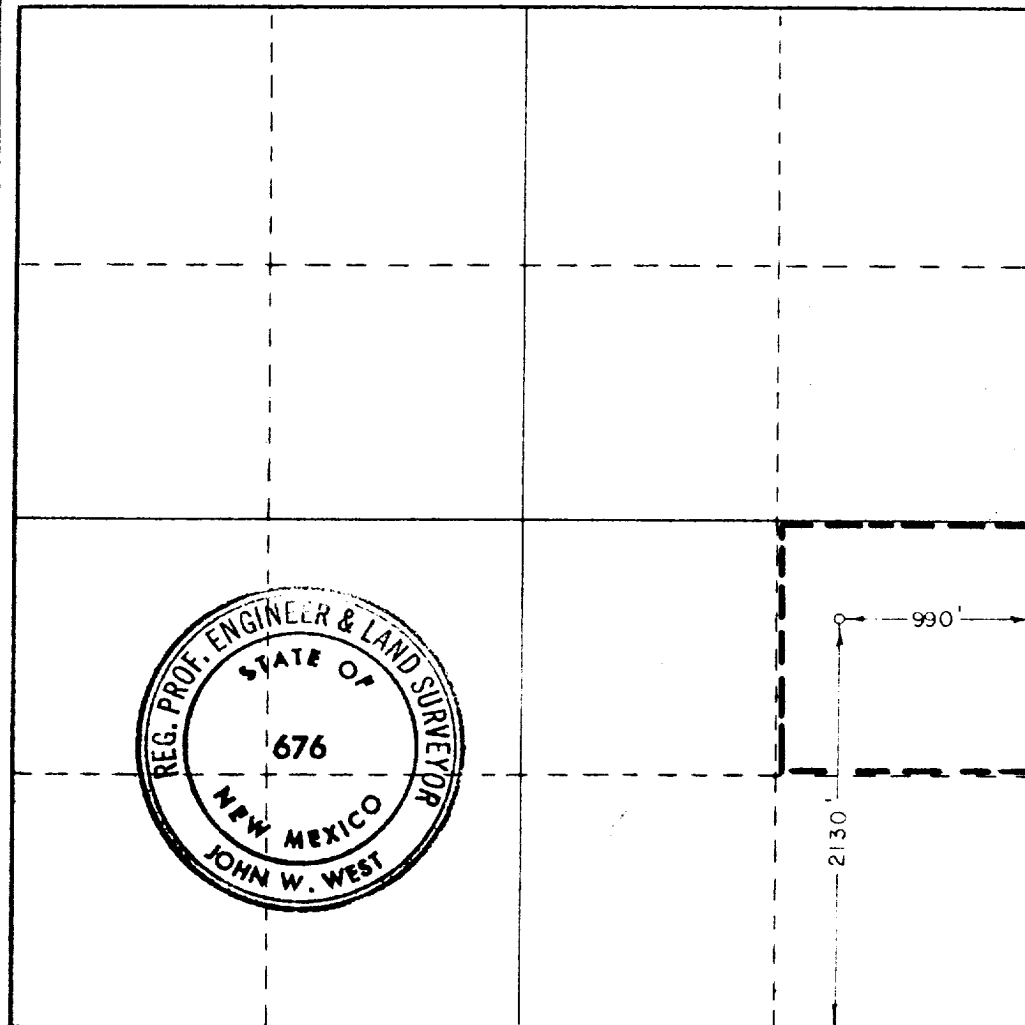
Operator TEXACO, INC.			Lease L. R. MANNING ^B FEDERAL ¹¹⁻¹¹		Well No. 21
Unit Letter I	Section 28	Township 18 SOUTH	Range 30 EAST	County EDDY	
Well Footage Location of Well:					
2130		feet from the SOUTH	line and	990	feet from the EAST
Land Level Elev 3476.3	Producing Formation SILURO-DEVONIAN		Pool WILDCAT	Dedicated Acreage: 40 Acres	

1. Outline the acreage dedicated to the subject well by colored pencil or hachure marks on the plat below.
2. If more than one lease is dedicated to the well, outline each and identify the ownership thereof (both as to working interest and royalty).
3. If more than one lease of different ownership is dedicated to the well, have the interests of all owners been consolidated by communitization, unitization, force-pooling, etc?

☐ Yes ☐ No If answer is "yes," type of consolidation _____

If answer is "no," list the owners and tract descriptions which have actually been consolidated. (Use reverse side of this form if necessary.) _____

No allowable will be assigned to the well until all interests have been consolidated (by communitization, unitization, forced-pooling, or otherwise) or until a non-standard unit, eliminating such interests, has been approved by the Commission.



CERTIFICATION

I hereby certify that the information contained herein is true and complete to the best of my knowledge and belief.

Name
V. G. Johnston

Position
Asst. Dist. Mgr.

Company
TEXACO INC.

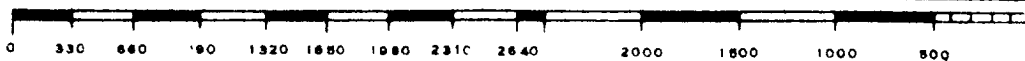
Date
SEPTEMBER 27, 1983

I hereby certify that the well location shown on this plat was plotted from field notes of actual surveys made by me or under my supervision, and that the same is true and correct to the best of my knowledge and belief.

Date Surveyed
SEPTEMBER 19, 1983

Registered Professional Engineer and/or Land Surveyor

John W. West
Certificate No. **JOHN W. WEST, 676**
RONALD J. EIDSON, 5239



SUPPLEMENTAL DRILLING DATA

TEXACO INC.

L.R. MANNING-FEDERAL "B" WELL NO.21

1. SURFACE FORMATION: Quaternary.

2. ESTIMATED TOPS OF GEOLOGIC MARKERS:

Salt	560'	Wolfcamp	9520'
Base Salt	1370'	Strawn Ls.	10,660'
Yates	1570'	Lower Miss. Ls.	12,090'
Seven Rivers	1920'	Woodford	12,770'
Queen	2660'	Siluro-Devonian	12,850'
Bone Springs Ls.	5630'		

3. ANTICIPATED POSSIBLE HYDROCARBON BEARING ZONES:

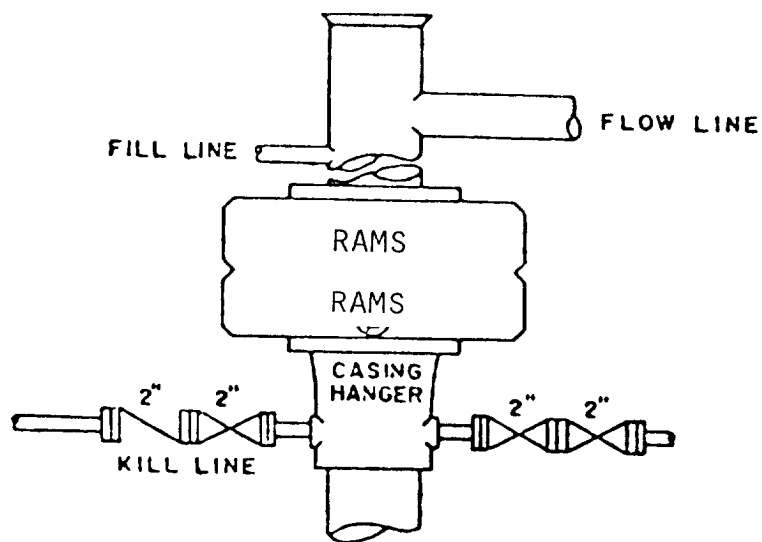
Strawn	Oil
Morrow	Gas
Siluro-Devonian	Oil

4. PROPOSED CASING AND CEMENTING PROGRAM:

CASING SIZE	SETTING DEPTH		WEIGHT	GRADE	JOINT
	FROM	TO			
13-3/8"	0	540'	48#	H-40	STC
9-5/8"	0	1640'	36#	K-55	STC
"	1640'	2160'	40#	K-55	STC
"	2160'	3760'	40#	S-80	STC
"	3760'	4000'	43.5#	S-95	LTC
5-1/2"	0	1800'	17#	N-80	LTC
"	1800'	7120'	17#	K-55	LTC
"	7120'	10,560'	17#	N-80	LTC
"	10,560'	13,200'	17#	S-95	LTC

13-3/8" casing to be set in anhydrite and cemented with approximately 700 sacks of class "H" cement. Cement to circulate.

9-5/8" casing to be cemented in two stages with DV tool at 545 feet.
1st stage to be 1500 sacks of HLW tailed in with 200 sacks of class "H".
2nd stage to be 150 sacks of HLW w/ 2% CaCl.



BOP STACK

3000 PSI WORKING PRESSURE

DEPTH INTERVAL

WHILE DRILLING 12-1/4" HOLE

BOP ARRANGEMENT

BOP ARRANGEMENT

GEOLOGICAL SURVEY

104° 00' 32" 45'

610000 FEET 96 R 30 E 97

98

900

901 55'

MAL JAM 12 MI
M MI TO N MEX 83

22
T 18 S

630000
FEET

PROPOSED WELL SITE

Walters Lake

Hackberry

POINT "A"

T 19 S

SILVER
CITY

L A Y T O N

EXHIBIT "D"

TEXACO INC.
L.R. MANNING-FEDERAL "B" WELL NO.21
2130'FSL & 990'FEL SEC.28, I.18 S., R.30 E.
EDDY COUNTY, N.M.

TOPO PLAT

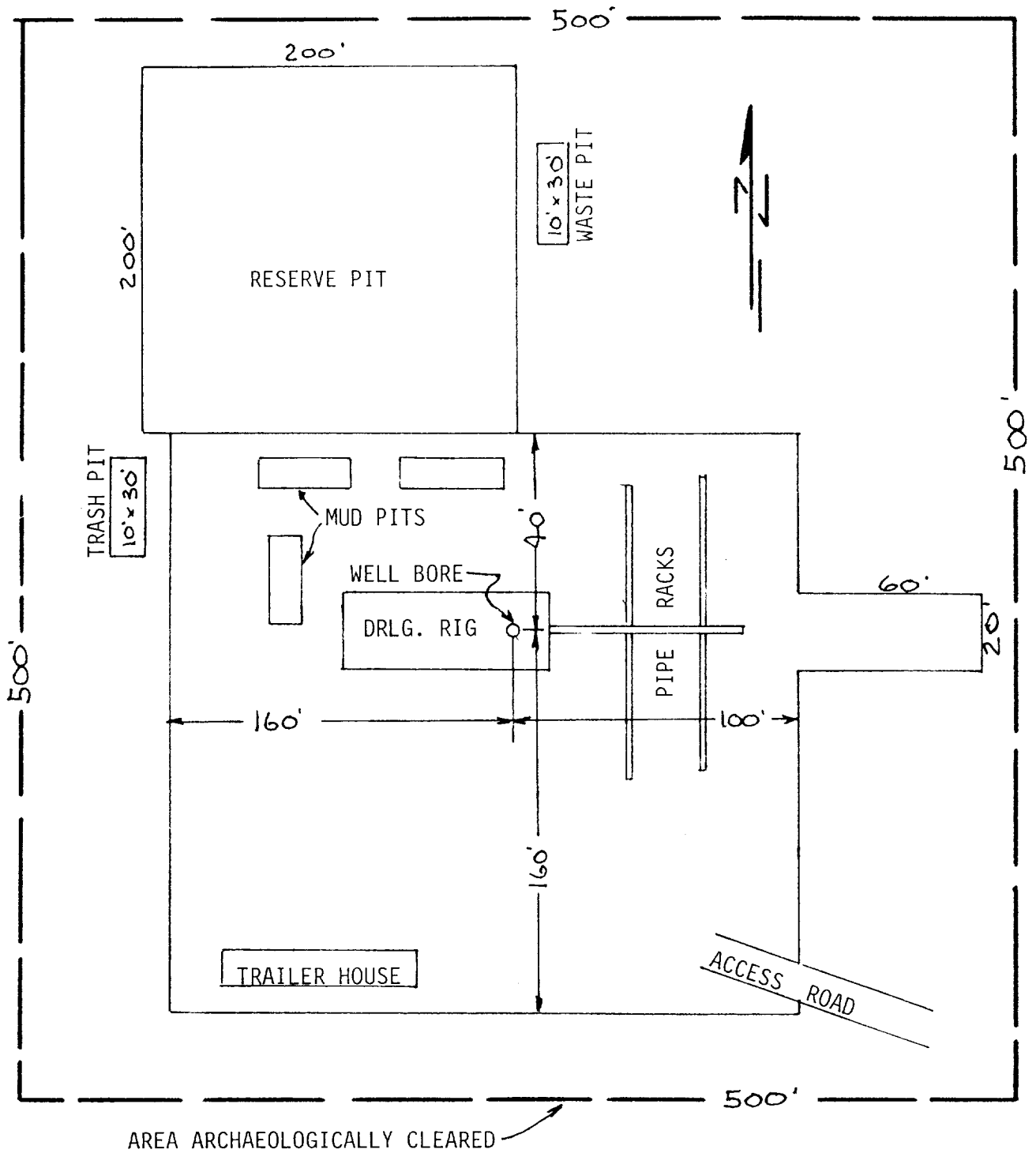


EXHIBIT "C"

TEXACO INC.
L.R. MANNING FEDERAL "B" WELL NO.21

DRILLING RIG LAYOUT
SCALE: None



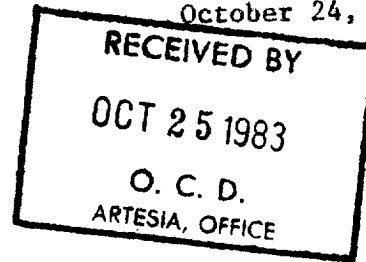
United States Department of the Interior

BUREAU OF LAND MANAGEMENT

P.O. BOX 1397
ROSWELL, NEW MEXICO 88201

IN REPLY
REFER TO:

October 24, 1983



Texaco Inc.
P.O. Box 728
Hobbs, New Mexico 88240

Dear Sir:

Your application for Permit to Drill well No. 21 L. R. Manning-Federal "B" in the NE1/4 Sec. 28, T. 18 S., R. 30 E., Eddy County, New Mexico, lease NM-033775, to a depth of 13,200 feet to test the Siluro-Devonian formation in the oil-potash area, is hereby approved as amended by stipulations attached to the application.

One copy of the application is returned herewith. Please notify the Bureau of Land Management office checked on the attached special stipulation, in sufficient time for a representative to witness all cementing operations.

S/ Richard Baston

Associate District Manager

Enclosure

cc:

✓ NMOC (2)

BLM - Carlsbad

DM - Mining (2)

Roswell District Files

BLM - Carlsbad (John Wad)

SCR