

DEPARTMENT OF THE INTERIOR
GEOLOGICAL SURVEY

APPLICATION FOR PERMIT TO DRILL, DEEPEN, OR PLUG BACK

1a. TYPE OF WORK

DRILL ☒DEEPEN ☐PLUG BACK ☐

5. LEASE DESIGNATION AND SERIAL NO.

N M-23417 54183

6. IF INDIAN, ALLOTTEE OR TRIBE NAME

7. UNIT AGREEMENT NAME

8. FARM OR LEASE NAME

Travis "D" Federal

9. WELL NO.

21

10. FIELD AND POOL, OR WILDCAT

Loco Hills-Queen-
Crayburg-San Andres11. SEC., T., R., M., OR BLK.
AND SURVEY OR AREA

17 - 18S - 29E

12. COUNTY OR PARISH

Eddy

13. STATE

New Mexico

b. TYPE OF WELL

OIL
WELL ☒GAS
WELL ☐OTHER ☐

2. NAME OF OPERATOR

Anadarko Production Company

3. ADDRESS OF OPERATOR

P. O. Drawer 130, Artesia, New Mexico 88210

4. LOCATION OF WELL (Report location clearly and in accordance with any State requirements)

At surface

1980' FSL & 660' FWL Sec. 17, T18S, R29E

At proposed prod. zone

Same 760' Eddy County, New Mexico

14. DISTANCE IN MILES AND DIRECTION FROM NEAREST TOWN OR POST OFFICE*

Approximately 8 miles Southwest of Loco Hills, New Mexico

15. DISTANCE FROM PROPOSED*

LOCATION TO NEAREST
PROPERTY OR LEASE LINE, FT.
(Also to nearest drig. unit line, if any)

660'

16. NO. OF ACRES IN LEASE

720

17. NO. OF ACRES ASSIGNED
TO THIS WELL

40

18. DISTANCE FROM PROPOSED LOCATION*
TO NEAREST WELL, DRILLING, COMPLETED,
OR APPLIED FOR, ON THIS LEASE, FT.

1320'

19. PROPOSED DEPTH

2850'

20. ROTARY OR CABLE TOOLS

Rotary

21. ELEVATIONS (Show whether DF, RT, GR, etc.)

9549.8' GL 3546.6' GL

22. APPROX. DATE WORK WILL START*

12-5-83

23.

PROPOSED CASING AND CEMENTING PROGRAM

SIZE OF HOLE	SIZE OF CASING	WEIGHT PER FOOT	SETTING DEPTH	QUANTITY OF CEMENT
12-1/4"	8-5/8"	24.0#	350'	Approx. 250 circ or readymixed
7-7/8"	5-1/2"	15.5#	2850'	Approx. 500 circulated

1. Rig up rotary tools.
2. Drill 12-1/4" hole to approx. 350'; set & circulate or readymix cement to surface on 8-5/8" casing. Install & test Series 900 Double Ram Hydraulic Blowout Preventor.
3. Drill 7-7/8" hole to T D (approx. 2850'); run Open Hole Logs.
4. Set & circulate cement on 5 1/2" casing from T D to surface.
5. Perforate, acidize and fracture treat.
6. Run 2-3/8" tubing, rods and bottomhole pump; install pumping equipment and place well on production.

Posted A.D.
9D-10th Bunk
12-9-83

IN ABOVE SPACE DESCRIBE PROPOSED PROGRAM: If proposal is to deepen or plug back, give data on present productive zone and proposed new productive zone. If proposal is to drill or deepen directionally, give pertinent data on subsurface locations and measured and true vertical depths. Give blowout preventer program, if any.

24.

SIGNED

Truman D. Jones

TITLE

Field Foreman

DATE

November 4, 1983

(This space for Federal or State office use)

PERMIT NO.

APPROVAL DATE

APPROVED BY

'Orig. Sgd.' Earl R. Cunningham

TITLE

District Manager

DATE

DEC 02 1983

CONDITIONS OF APPROVAL, IF ANY:

*See Instructions On Reverse Side

APPROVAL SUBJECT TO
GENERAL REQUIREMENTS AND
SPECIAL STIPULATIONS
ATTACHED

NEW MEXICO OIL CONSERVATION COMMISSION
Drawer DD
Artesia, NM 88210
NEW MEXICO OIL CONSERVATION COMMISSION
WELL LOCATION AND ACREAGE DEDICATION PLAT

Form C-102
Supersedes C-128
Effective 1-1-65

All distances must be from the outer boundaries of the Section.

Operator ANADARKO PRODUCTION COMPANY			Lease TRAVIS "D"		Well No. 21
Unit Letter L	Section 17	Township 18 South	Range 29 East	County Eddy	
Actual Footage Location of Well: 2030 feet from the South line and 760 feet from the West line					
Ground Level Elev. 3546.6	Producing Formation Grayburg		Pool Loco Hills Queen-Grayburg San Andres		Dedicated Acreage: 40 Acres

1. Outline the acreage dedicated to the subject well by colored pencil or hachure marks on the plat below.
2. If more than one lease is dedicated to the well, outline each and identify the ownership thereof (both to working interest and royalty).
3. If more than one lease of different ownership is dedicated to the well, have the interests of all owners been consolidated by communitization, unitization, force-pooling, etc?

☐ Yes ☐ No If answer is "yes," type of consolidation _____

If answer is "no," list the owners and tract descriptions which have actually been consolidated. (Use reverse side of this form if necessary.) _____

No allowable will be assigned to the well until all interests have been consolidated (by communitization, unitization, forced-pooling, or otherwise) or until a non-standard unit, eliminating such interests, has been approved by the Commission.

CERTIFICATION

I hereby certify that the information contained herein is true and complete to the best of my knowledge and belief.

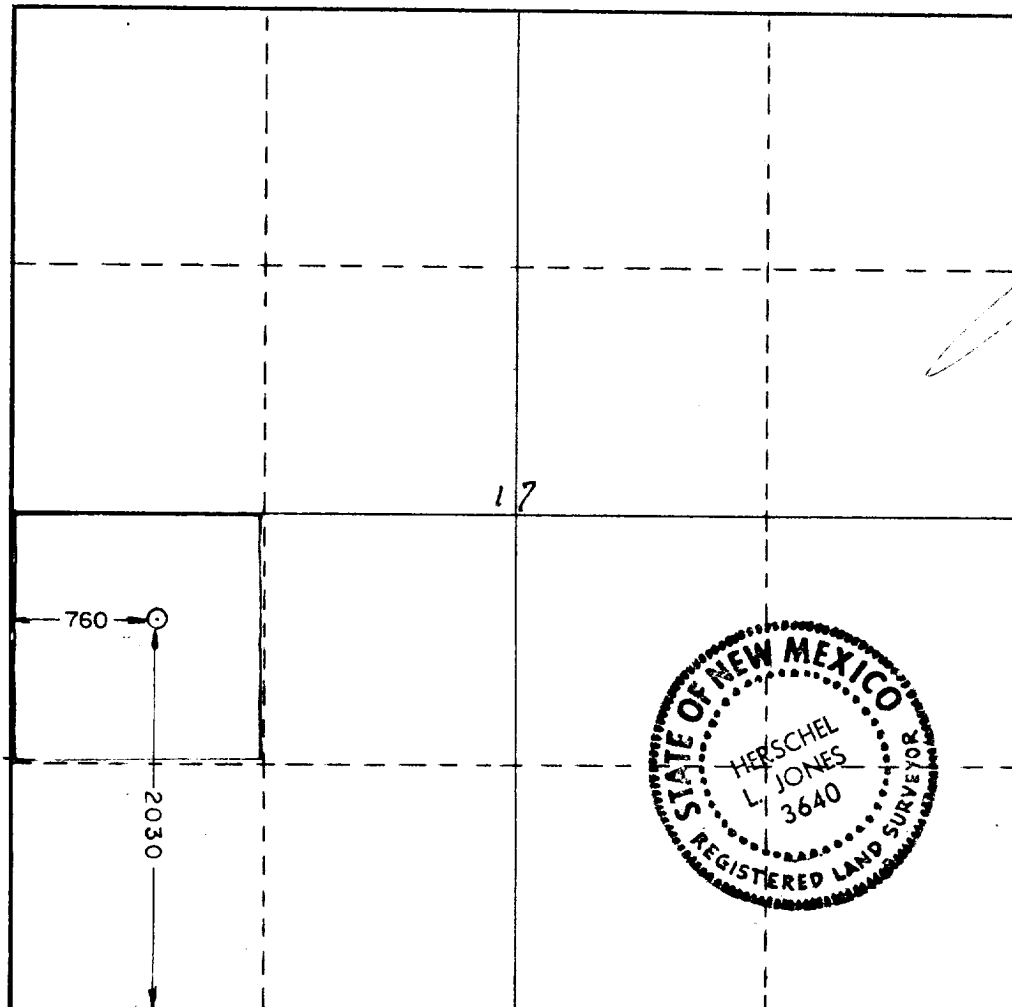
Name
Jerry E. Buckles
Position
Area Supervisor
Company
Anadarko Production Company
Date
November 28, 1983

I hereby certify that the well location shown on this plat was plotted from field notes of actual surveys made by me or under my supervision, and that the same is true and correct to the best of my knowledge and belief.

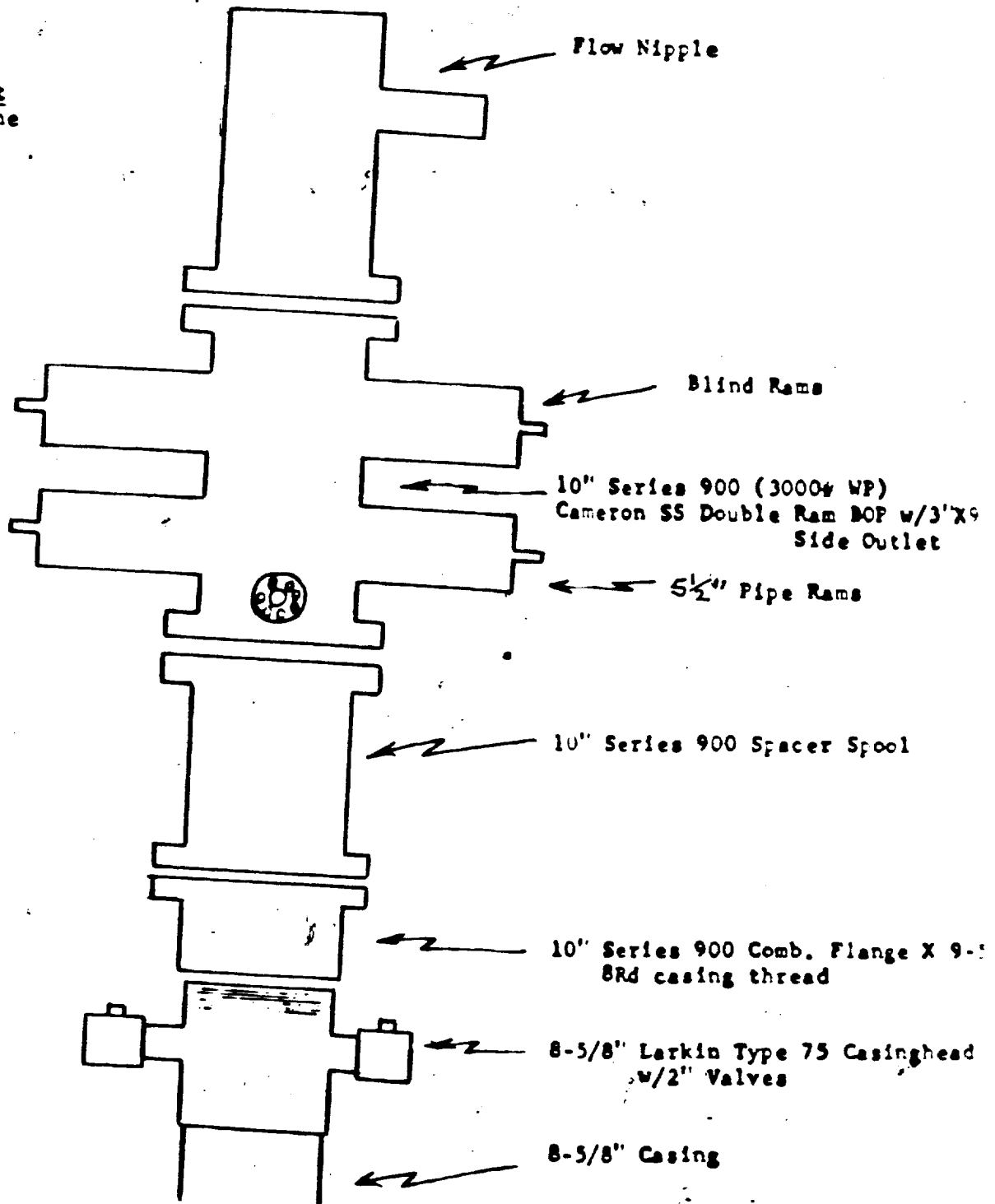
Date Surveyed
11/25/83
Registered Professional Engineer and/or Land Surveyor

Certificate No.

3640



Closing Unit
4 Stage Payne



B O P Schematic

DATA SHEET

This data sheet is provided in reference to the attached "Application for Permit to Drill:

Anadarko's Travis "D" Federal #21

1. Location: 1980' FSL & 660' FWL Sec. 17, T18S, R29E, Eddy County, New Mexico
2. Elevation: 3549.8' GL
3. Geological Name of Surface Formation: Triassic Doakum (Santa Rosa)
4. Type of Drilling Tools to be utilized: Rotary Tools
5. Proposed Drilling Depth: 2850'
6. Tops of Important Geological Markers:

T. Salt - -	350'	7-Rivers - -	1460'
B. Salt - -	780'	Queen - - -	2000'
Tansill - -	820'	Grayburg - -	2350'
Yates - - -	935'	San Andres -	2750'
7. Estimated Depth of Anticipated Water, Oil or Gas:

Oil: - - 2440' - 2750'
8. Casing Program:

8-5/8" - 24.0# K-55 or J-55 - New
5-1/2" - 15.5# K-55 or J-55 - New
9. Setting Depth of Casing:

8-5/8" - 350' - approx. 200 sx cement
5-1/2" - 2850' - approx. 500 sx cement
10. Specifications for Pressure Control Equipment: (See attached Schematic)

This rig will have a Series 900 BOP with 4" Blind Rams, kill line and choke manifold; Koomey Hydraulic controls & accumulator with remote controls. When nipping up, test BOP and Choke to 1000 psi. Operate BOP equipment once a day, or as directed by Company Representative.
11. Mud Program:

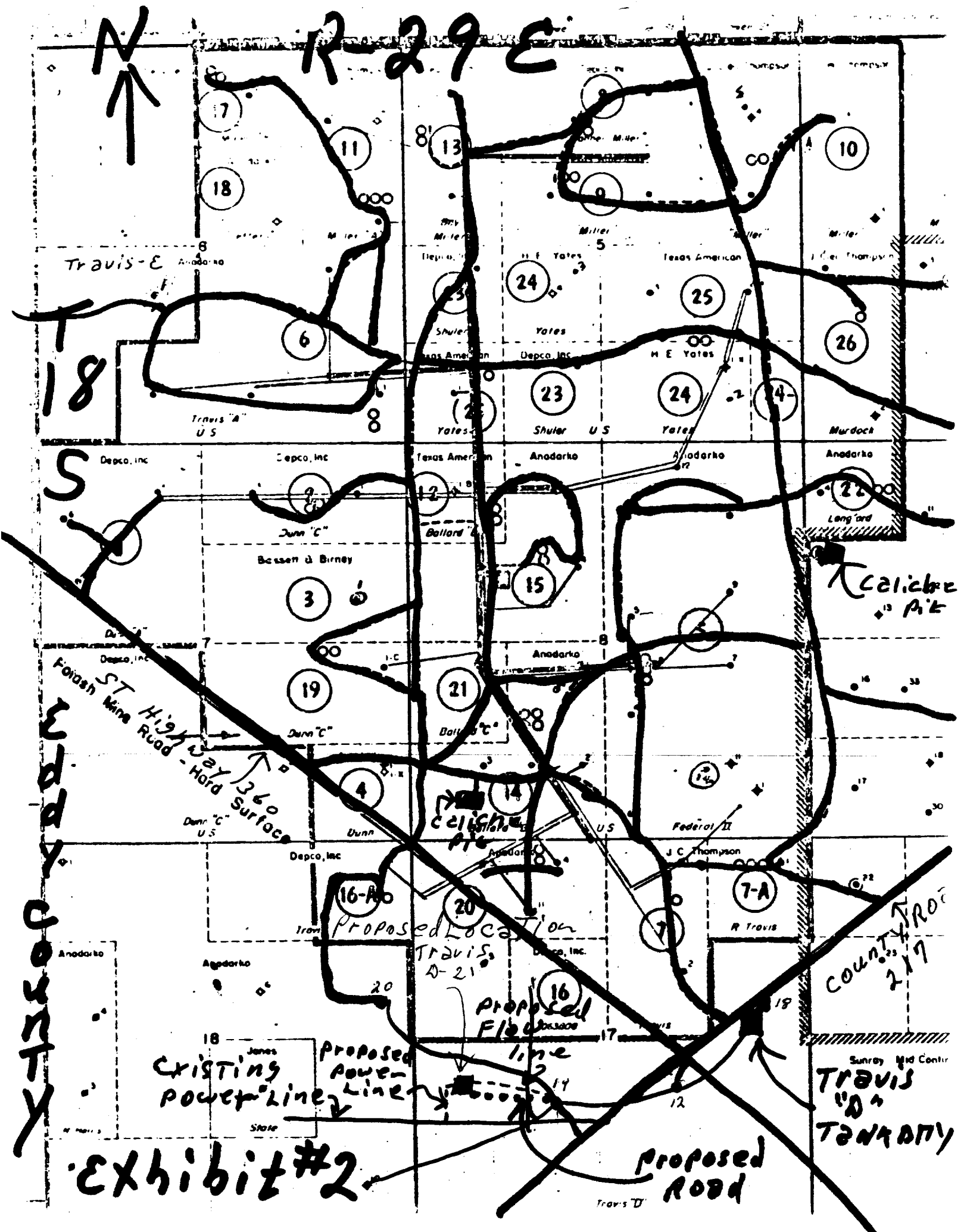
Spud and drill with fresh water Native Mud to a depth of approx. 350'. Drill out from under surface casing with 10# brine water to within 50' of T D while maintaining a Ph of 10. At this point paper & gel will be used to clean hole prior to running O. H. Logs.
12. Testing, Logging & Coring Program:
 - a. Testing: No drill stem tests will be conducted.
 - b. Coring: No coring is planned but there is a possibility the well will be cored.
 - c. Logging: Open Hole Logs will be run prior to running 5 1/2" casing.
13. Potential Hazards:

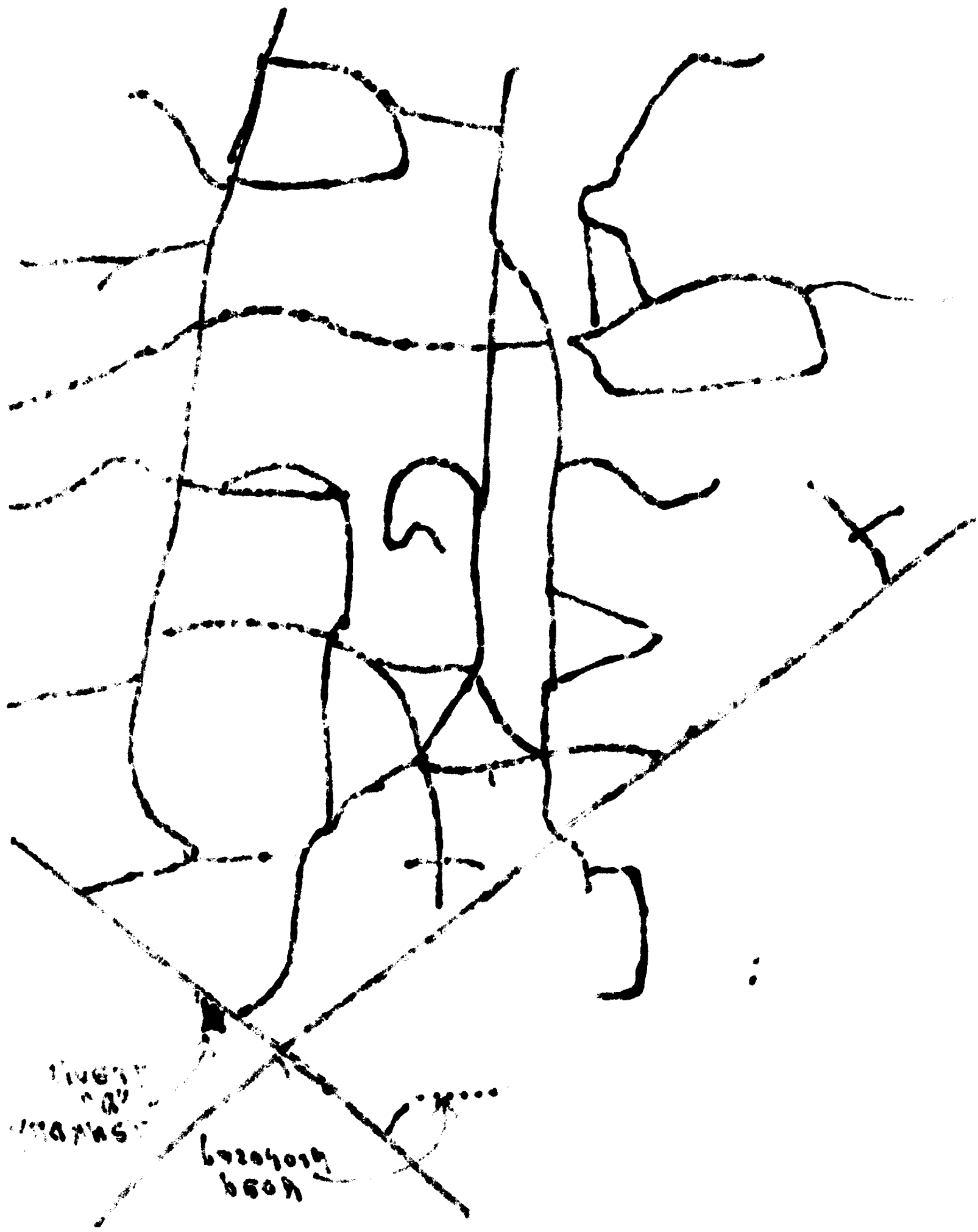
None are expected. Above described BOP should take care of any blowout. Numerous wells have been drilled in this area without problems.
14. Anticipated Starting Date & Duration:

Plans are to begin drilling operations about December 5, 1983. Approximately 6 days are required to drill the well and 2 weeks for completion.
15. Other Facets:

None.

R-29C





1967
"A"
1967

1967
1967

PLAT LAYOUT RIG
WEH DRILLING

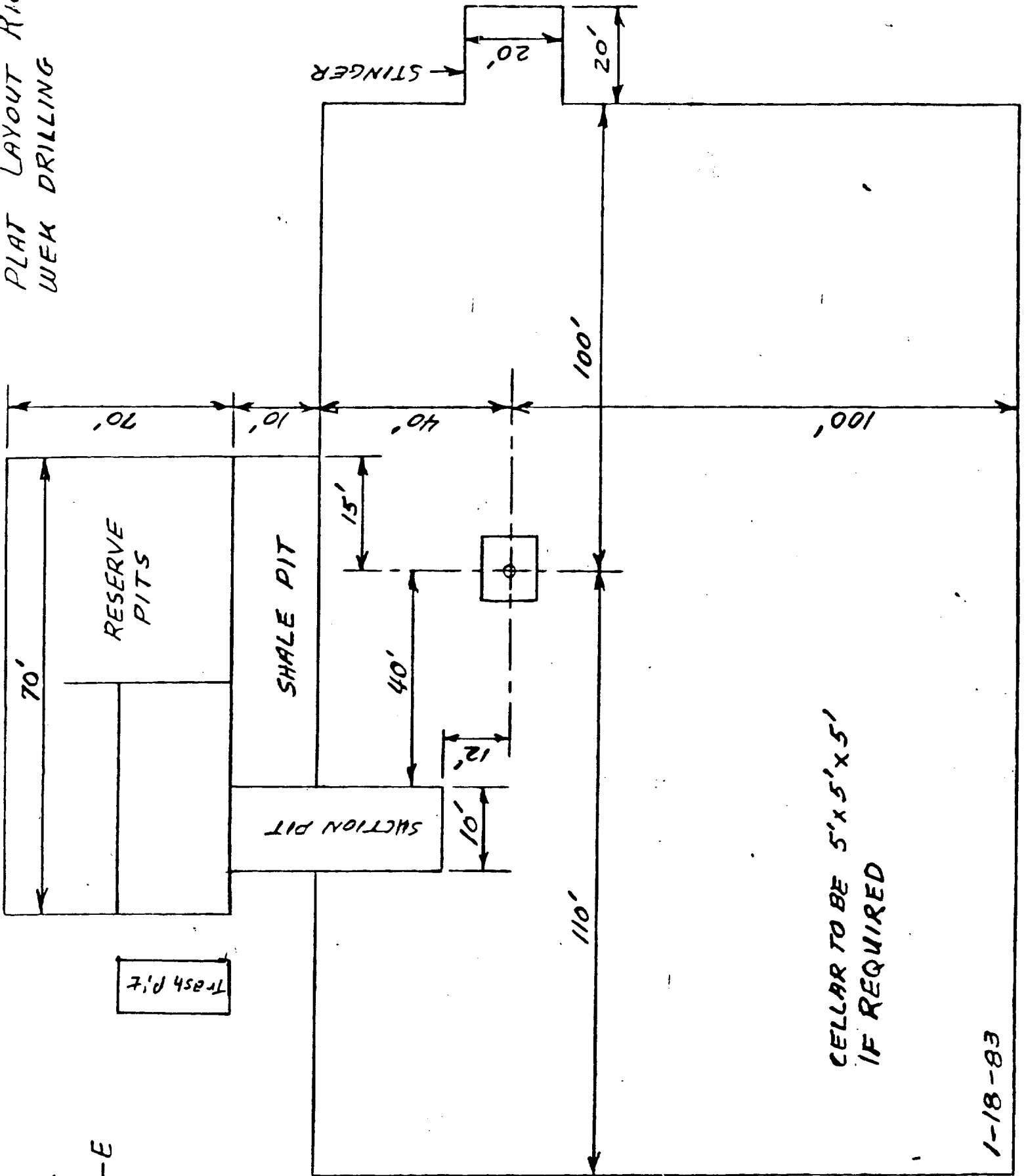


EXHIBIT #3