

**MEXICO OIL CONSERVATION COMMISSION
WELL LOCATION AND ACREAGE DEDICATION PLAT**

Form C-102
Supersedes C-101
Effective 1-1-85

All distances must be from the outer boundaries of the Section

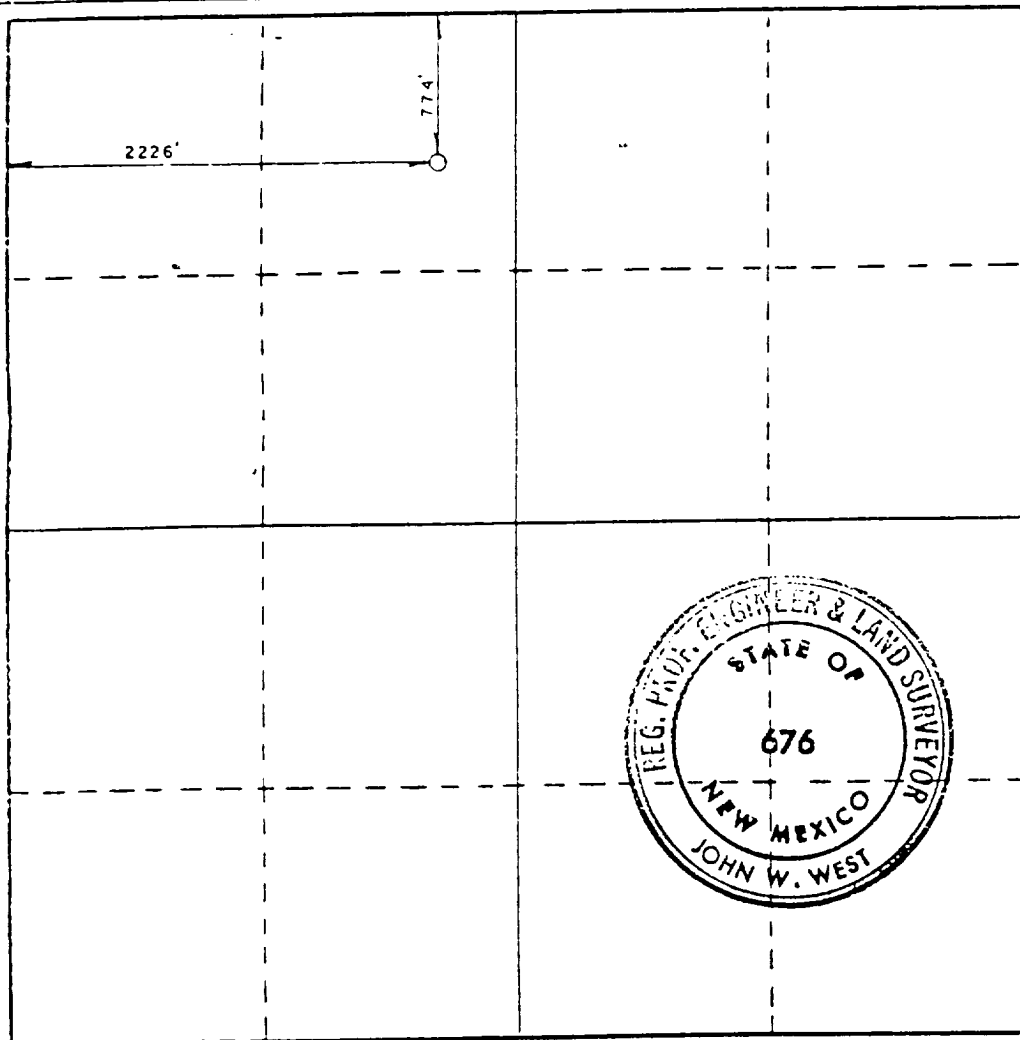
Operator Enron Oil & Gas Company			Lease NELSON FEDERAL		Section 8
Well Letter C	Section 3	Township 18 SOUTH	Range 30 EAST	County EDDY	
Actual Portage Location of Well: 774 feet from the NORTH line and 2226 feet from the WEST line					
Well Level Elev. 3535.5	Producing Formation Bone Spring		Depth Und.		Dedicated Acreage 40

1. Outline the acreage dedicated to the subject well by colored pencil or hatchure marks on the plat below.
2. If more than one lease is dedicated to the well, outline each and identify the ownership thereof (both as to working interest and royalty).
3. If more than one lease of different ownership is dedicated to the well, have the interests of all owners been consolidated by communitization, unitization, force-pooling, etc?

☐ Yes ☐ No If answer is "yes," type of consolidation _____

If answer is "no," list the owners and tract descriptions which have actually been consolidated. (Use reverse side of this form if necessary.) _____

No allowable will be assigned to the well until all interests have been consolidated (by communitization, unitization, forced-pooling, or otherwise) or until a non-standard unit, eliminating such interests, has been approved by the Commission.



CERTIFICATION

I hereby certify that the information contained herein is true and complete to the best of my knowledge and belief.

Betty Gildon

Name

Betty Gildon

Position

Regulatory Analyst

Company

Enron Oil & Gas Company

Date

6/14/88

I hereby certify that the well location shown on this plat was plotted from field notes of actual surveys made by me or under my supervision, and that the same is true and correct to the best of my knowledge and belief.

Date Surveyed

NOVEMBER 30, 1983

Registered Professional Engineer and/or Land Surveyor

John W. West

Certificate No. JOHN W. WEST,

676

RONALD J. EIDSON, 3239

320 880 190 1320 1890 2310 2640 2000 1600 1000 600

