

NO. OF COPIES RECEIVED
DISTRIBUTION
SANTA FE
FILE
U.S.G.S.
LAND OFFICE
OPERATOR

NEW MEXICO OIL CONSERVATION COMMISSION

RECEIVED
FEB 02 1984
O. C. D.
ARTESIA OFFICE

Form C-101
Revised 1-1-84
20-015-24771
5A. Indicate Type of Lease
STATE ☒ FEDERAL ☐
5. State Oil & Gas Lease No.
OG-647

Collier Drilling
APPLICATION FOR PERMIT TO DRILL, DEEPEN, OR PLUG BACK

1A. Type of Work
DRILL ☒ DEEPEN ☐ PLUG BACK ☐
b. Type of Well
OIL WELL ☒ GAS WELL ☐ OTHER ☐
2. Name of Operator
Delmer W. Berry
3. Address of Operator
2401 Ioma Drive Artesia, New Mexico 88210
4. Location of Well
UNIT LETTER O LOCATED 990 FEET FROM THE South LINE
AND 1980 FEET FROM THE East LINE OF SEC. 28 TWP. 18 RGE. 28 NMPM
19. Proposed Depth
2900'
19A. Formation
San Andres
20. Rotary or C.T.
Rotary
21. Elevations (Show whether DF, RT, etc.)
3535
21A. Kind & Status Plug. Bond
Statewide
21B. Drilling Contractor
Collier Drilling Corp.
22. Approx. Date Work will start
Feb. 2, 1984
7. Unit Agreement Name
8. Farm or Lease Name
Toomey Allen
9. Well No.
#19
10. Field and Pool, or Wildcat
Artesia Q GR SA
12. County
Eddy

23. PROPOSED CASING AND CEMENT PROGRAM

SIZE OF HOLE	SIZE OF CASING	WEIGHT PER FOOT	SETTING DEPTH	SACKS OF CEMENT	EST. TOP
10 3/4	8 5/8	24#	500'	350 SXS	surface
7 7/8	5 1/2	17#	2800'	500 SXS	surface

Plan to spud Artesia Queen Grayburg San Andres well on Feb. 2, 1984 with 10 3/4" bit. Set 500' of 8 5/8" surface 24# casing with 350 sxs of Class "C" neat. Drill out with 7 7/8" bit with 10# brine to proposed depth of 2900'. If commercial shows are present 5 1/2", 17# casing will be set with 500 sxs Class "C" neat and circulate to surface. If dry hole, proper plugs will be set as prescribed by NM OCD.

BOP:
Rig 12: 10", 5000# SS Cameron series 1500- with Koomey 2 stage accumulator

APPROVED FOR 180 DAYS
PERMIT NO. 86284
UNLESS DRILLING UNDERWAY

IN ABOVE SPACE DESCRIBE PROPOSED PROGRAM: IF PROPOSAL IS TO DEEPEN OR PLUG BACK, GIVE DATA ON PRESENT PRODUCTIVE ZONE AND PROPOSED NEW PRODUCTIVE ZONE. GIVE BLOWOUT PREVENTER PROGRAM, IF ANY.

I hereby certify that the information above is true and complete to the best of my knowledge and belief.

Signed Wickie Sue Title Production Clerk Date Feb. 1, 1984

(This space for State Use)

APPROVED BY Mike Walker TITLE OIL AND GAS INSPECTOR DATE FEB 06 1984

CONDITIONS OF APPROVAL, IF ANY:

Post A P
ID-12-24 Book
2-10-84

OIL CONSERVATION DIVISION

STATE OF NEW MEXICO
ENERGY AND MINERALS DEPARTMENTP. O. BOX 2088
SANTA FE, NEW MEXICO 87501Form C-102
Revised 10-1-78

All distances must be from the outer boundaries of the Section.

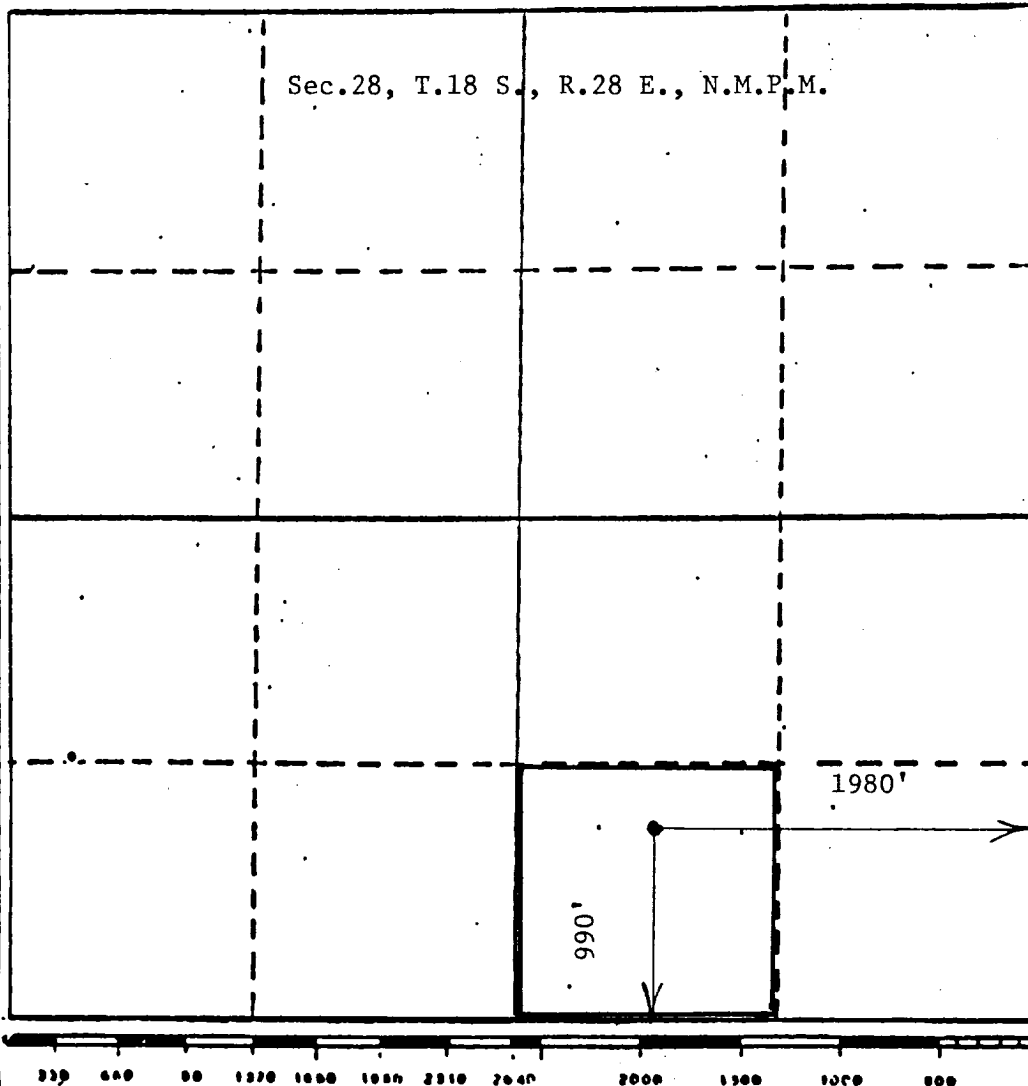
Operator D. W. Berry			Lease Tooney Allen			Well No. #19		
Unit Letter 0	Section 28	Township 18 South	Range 28 East	County Eddy				
Actual Postage Location of Well: 990 feet from the South line and 1980 feet from the East line								
Ground Level Elev. 3535	Producing Formation San Andres		Pool Artesia O-GR-SA			Dedicated Acreage 40 Acres		

1. Outline the acreage dedicated to the subject well by colored pencil or hatchure marks on the plat below.
2. If more than one lease is dedicated to the well, outline each and identify the ownership thereof (both as to working interest and royalty).
3. If more than one lease of different ownership is dedicated to the well, have the interests of all owners been consolidated by communitization, unitization, force-pooling, etc?

☐ Yes ☐ No If answer is "yes," type of consolidation _____

If answer is "no," list the owners and tract descriptions which have actually been consolidated. (Use reverse side of this form if necessary.) _____

No allowable will be assigned to the well until all interests have been consolidated (by communitization, unitization, forced-pooling, or otherwise) or until a non-standard unit, eliminating such interests, has been approved by the Division



CERTIFICATION

I hereby certify that the information contained herein is true and complete to the best of my knowledge and belief.

Name

Vickie Teel

Position

Agent

Company

Collier Energy, Inc.

Date

February 1, 1984

I hereby certify that the well location shown on this plat was plotted from field notes of actual surveys made by me or under my supervision, and that the same is true and correct to the best of my knowledge and belief.

Date Surveyed

January 25, 1984

Registered Professional Engineer and/or Land Surveyor

John D. Jackson, P.E. & L.S.

Certificate No. 6299

PROFESSIONAL ENGINEER