

Form 3160-3
(November 1983)
(formerly 9-331C)

NM OIL CONS. COMMISSION
Drawer DD
Artesia, NM 88210

RECEIVED BY

SUBMIT IN TRIPPLICATE*

(Other instructions on
reverse side)

Form approved. **30-015-24892**
Budget Bureau No. 1004-0136
Expires August 31, 1985

UNITED STATES
DEPARTMENT OF THE INTERIOR
BUREAU OF LAND MANAGEMENT
O. C. D.
ARTESIA, OFFICE

APPLICATION FOR PERMIT TO DRILL, DEEPEN, OR PLUG BACK

1a. TYPE OF WORK

DRILL ☒

DEEPEN ☐

PLUG BACK ☐

b. TYPE OF WELL

OIL
WELL ☒

GAS
WELL ☐

OTHER

SINGLE
ZONE ☒

MULTIPLE
ZONE ☐

2. NAME OF OPERATOR

William A. & Edward R. Hudson

3. ADDRESS OF OPERATOR

Box 198, Artesia, New Mexico 88210

4. LOCATION OF WELL (Report location clearly and in accordance with any State requirements.)*

At surface

1295' F. S. & 330' F. E. lines of Section 25-17S31E

At proposed prod. zone

14. DISTANCE IN MILES AND DIRECTION FROM NEAREST TOWN OR POST OFFICE*

6 miles SW of Maljamar, New Mexico

10. DISTANCE FROM PROPOSED*

LOCATION TO NEAREST
PROPERTY OR LEASE LINE, FT.

(Also to nearest drlg. unit line, if any)

330'

18. NO. OF ACRES IN LEASE

640

19. PROPOSED DEPTH

3950'

21. ELEVATIONS (Show whether DF, RT, GR, etc.)

3872' gr.

17. NO. OF ACRES ASSIGNED
TO THIS WELL

Waterflood Project

20. ROTARY OR CABLE TOOLS

Rotary

22. APPROX. DATE WORK WILL START*

July 15, 1984

23.

PROPOSED CASING AND CEMENTING PROGRAM

SIZE OF HOLE	SIZE OF CASING	WEIGHT PER FOOT	SETTING DEPTH	QUANTITY OF CEMENT
12 1/4"	8 5/8" OD	24# J-55	~800' - Set above salt - R.P.	600 sx. class "C" + 2% CAC
7 7/8"	5 1/2" OD	15.5# J--55	3950'	500 sx class "C"

It is proposed to drill this well with rotary tools to a depth of approximately 3950'. Production string will be cemented near bottom, and pays will be perforated and treated with acid or frac. All casing will be new. It is anticipated that approximately two months will be required to drill and complete well. This is an in-fill development well. The unorthodox location was approved by the New Mexico Oil Conservation Division, Order No. R-5473, Case No. 5952, dated June 21, 1977.

See Attachment for additional data.

IN ABOVE SPACE DESCRIBE PROPOSED PROGRAM: If proposal is to deepen or plug back, give data on present productive zone and proposed new productive zone. If proposal is to drill or deepen directionally, give pertinent data on subsurface locations and measured and true vertical depths. Give blowout preventer program, if any.

24.

SIGNED

TITLE

Consultant

DATE May 15, 1984

(This space for Federal or State office use)

PERMIT NO.

APPROVAL DATE

AREA MANAGER
CARLOS R. REYES

APPROVED BY
CONDITIONS OF APPROVAL, IF ANY:

DATE

6-8-84
APPROVAL SUBJECT TO
GENERAL REQUIREMENTS AND
SPECIAL STIPULATIONS
ATTACHED

*See Instructions On Reverse Side

**NEW MEXICO OIL CONSERVATION COMMISSION
WELL LOCATION AND ACREAGE DEDICATION PLAT**

Form C-102
Supersedes C-128
Effective 1-1-65 **3**

All distances must be from the outer boundaries of the Section

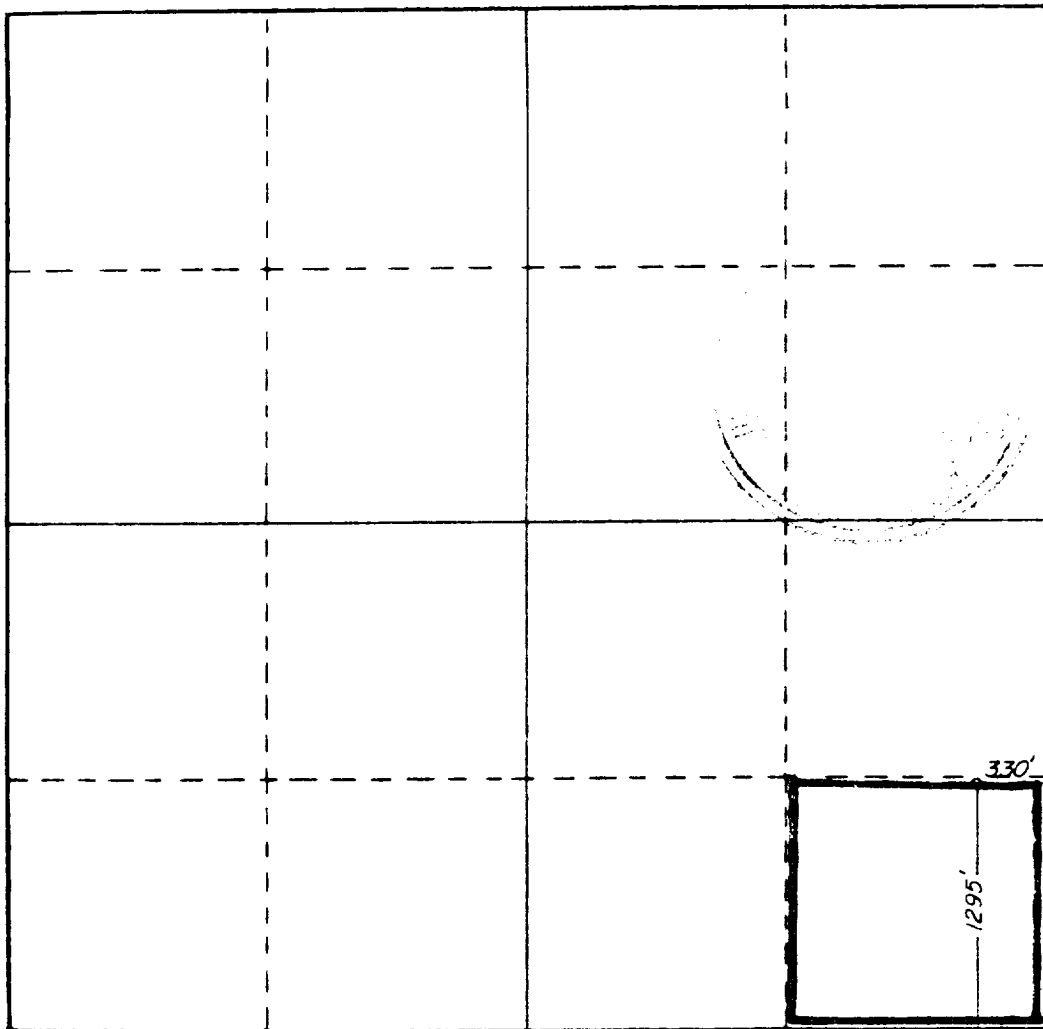
Operator WILLIAM A. & EDWARD R. HUDSON, INC.			Lease PUCKETT "B"		Well No. 31
Unit Letter P	Section 25	Township 17S	Range 31E	County EDDY	
Actual Footage Location of Well: 1295 feet from the SOUTH line and 330 feet from the EAST line					
Ground Level Elev. 3872.0	Producing Formation Grayburg-San Andres		Pool Maljamer (G-SA)	Dedicated Acreage: 40 Acres	

1. Outline the acreage dedicated to the subject well by colored pencil or hachure marks on the plat below.
2. If more than one lease is dedicated to the well, outline each and identify the ownership thereof (both as to working interest and royalty).
3. If more than one lease of different ownership is dedicated to the well, have the interests of all owners been consolidated by communitization, unitization, force-pooling, etc?

☐ Yes ☐ No If answer is "yes," type of consolidation _____

If answer is "no," list the owners and tract descriptions which have actually been consolidated. (Use reverse side of this form if necessary.) _____

No allowable will be assigned to the well until all interests have been consolidated (by communitization, unitization, forced-pooling, or otherwise) or until a non-standard unit, eliminating such interests, has been approved by the Commission.



CERTIFICATION

I hereby certify that the information contained herein is true and complete to the best of my knowledge and belief.

Name **Raymond L. Gray**

Position **Consultant**

Company **Wm A & Ed. R. Hudson**

Date **May 15, 1984**

I hereby certify that the well location shown on this plat was plotted from field notes of actual surveys made by me or under my supervision, and that the same is true and correct to the best of my knowledge and belief.

Date Surveyed **5/8/84**

Registered Professional Engineer and/or Land Surveyor

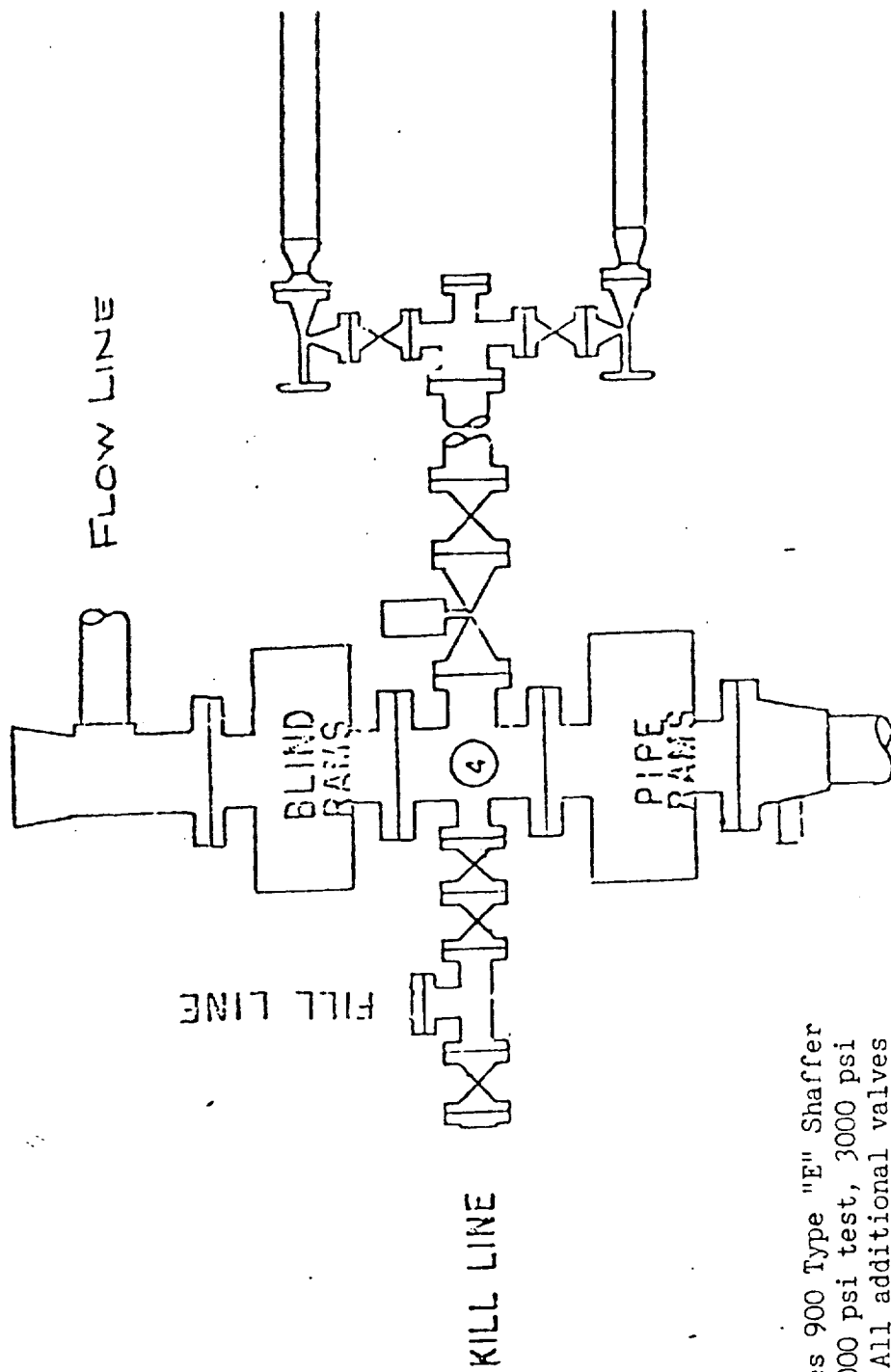
John W. West

Certificate No **JOHN W. WEST,** 676

WILLIAM A. & EDWARD B. HUDSON - PUCKETT "B"

- Rig 1 & 3.

BLOWOUT PREVENTER SPECIFICATION



BOP's are 10" Series 900 Type "E" Shaffer Double Hydraulic 6000 psi test, 3000 psi working pressure. All additional valves & connections are the same test & working pressures.

ADDITIONAL DATA

PUCKETT "B" #31

1. Surface formation is recent sands and caliche.

2. Estimated tops:

T. Anhydrite - 755'

T. Salt - - - 870'

B. Salt - - - 1900'

T. Red Sand - 3095'

~ 810'

3. It is expected that oil and gas will be encountered within the depths of
3750 to 3950'

4. Casing (See Form 3160-3)

5. Pressure Control Equipment (See attached diagram).

6. No special mud will be used. Drilling will be done with water and natural mud formed by drilling red beds and shales. Before running casing, some mud of suitable qualities will be spotted to keep hole clean.

7. Auxiliary equipment - not applicable.

8. No tests will be made before cementing casing, and no cores will be taken. Logs will be Gamma-ray and Compensated Neutron and Cement Bond log.

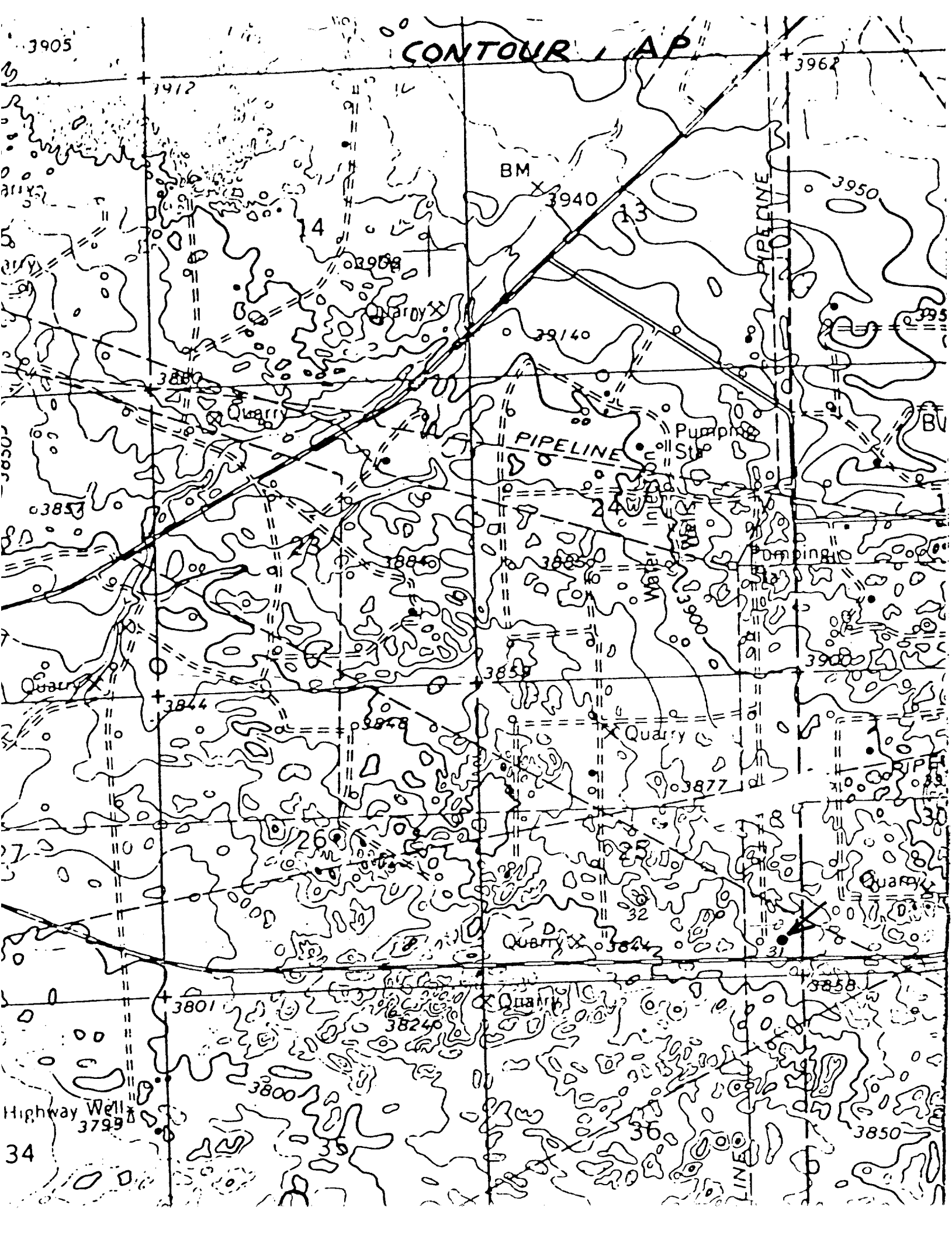
9. No abnormal pressures or temperatures are anticipated, or special hazards.

10. It is expected drilling will be commenced about July 15, 1984, and well should be completed within 60 days after reaching T.D.

3905

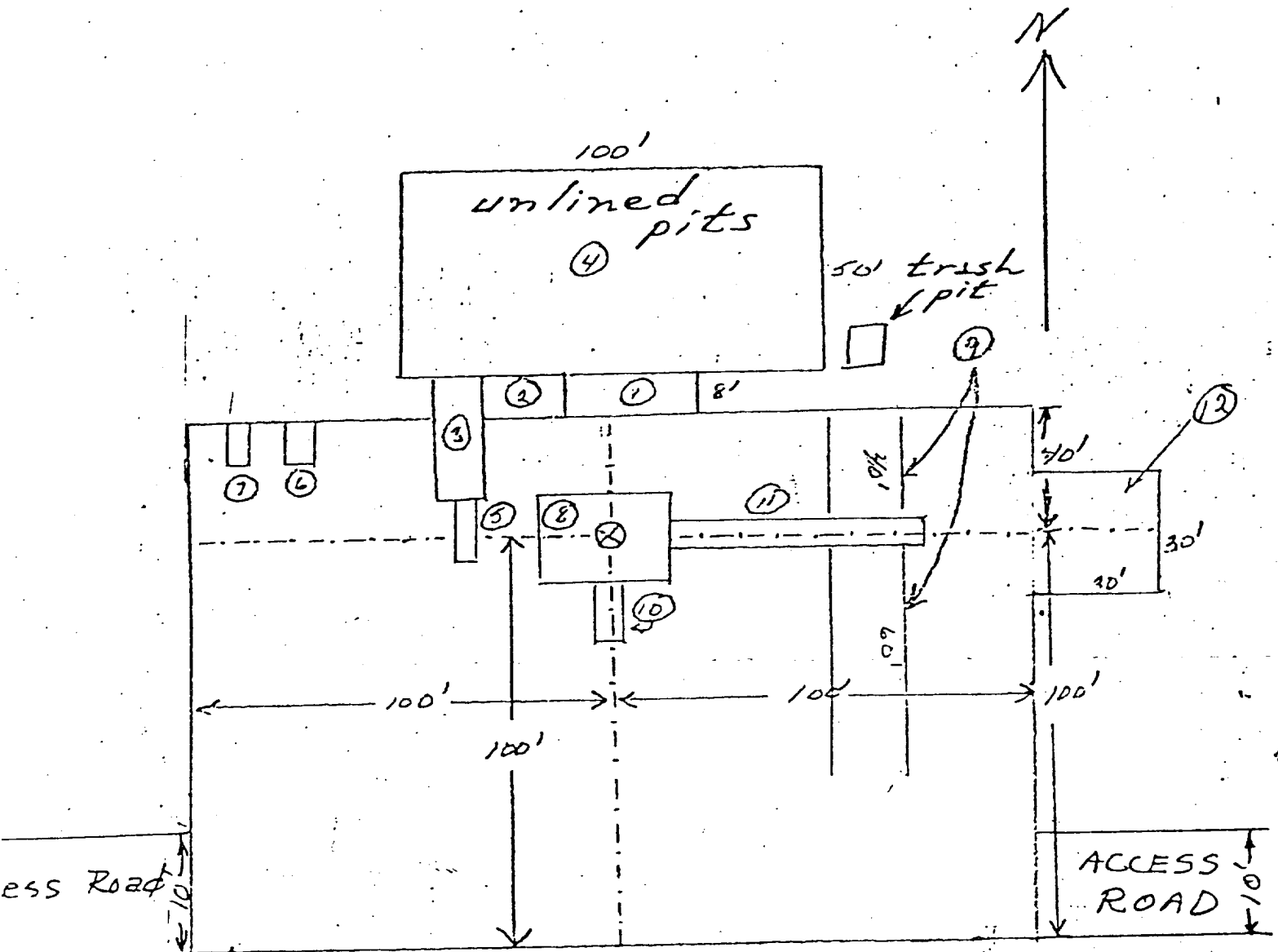
CONTOUR MAP

3962



Highway Well
3799

WEK DRILLING CO., INC.
RIG #1 LOCATION & MUD PIT SPECS.



- ① Shale Pit 30' x 8'
- ② Mud Pit 20' x 8'
- ③ Suction Pit 30' x 8'
- ④ Reserve Pit 100' x 50'
- ⑤ Pump

- ⑥ Water Tank
- ⑦ Fuel Tank
- ⑧ Rig
- ⑨ Pipe Racks
- ⑩ Dog House
- ⑪ Cat Walk 60'
- ⑫ Stinger

Schaeffer Type E 10" Series 900 Hydraulic BOP. The waste and debris from this well will be disposed of in a reserve pit and covered up.