

STATE OF NEW MEXICO
ENERGY AND MINERALS DEPARTMENT

OIL CONSERVATION REDEVELOPMENT

P. O. BOX 2088

SANTA FE, NEW MEXICO 87503

O. C. D.
ARTESIA, OFFICE

30-015-24906

Form C-101
Revised 10-1-78

NO. OF COPIES RECEIVED	
DISTRIBUTION	
SANTA FE	✓
FILE	✓
U.S.G.S.	2
LAND OFFICE	
OPERATOR	✓

5A. Indicate Type of Lease
STATE ☐ FEE ☒

5. State Oil & Gas Lease No.

APPLICATION FOR PERMIT TO DRILL, DEEPEN, OR PLUG BACK

a. Type of Work
DRILL ☒ DEEPEN ☐ PLUG BACK ☐

b. Type of Well
OIL WELL ☒ GAS WELL ☐ OTHER ☐ SINGLE ZONE ☐ MULTIPLE ZONE ☐

Name of Operator
Yates Petroleum Corporation ✓

Address of Operator
207 S. 4th, Artesia, New Mexico 88210

Location of Well
UNIT LETTER J LOCATED 1980 FEET FROM THE South LINE
NO 2200 FEET FROM THE East LINE OF SEC. 8 TWP. 18 RGE. 26 NMPM

7. Unit Agreement Name

8. Farm or Lease Name
Torrington "2K" Com

9. Well No.
1

10. Field and Pool, or Wildcat
Undes. Morrow

11. County
Eddy

12. County
Eddy

13. Proposed Depth
8950'

14A. Formation
Morrow

14B. Rotary or C.T.
Rotary

15. Elevation (show whether DF, RT, etc.)
3398' GL

21A. Kind & Status Plug. Bond
Blanket

21B. Drilling Contractor
Undes.

22. Approx. Date Work will start
ASAP

PROPOSED CASING AND CEMENT PROGRAM

SIZE OF HOLE	SIZE OF CASING	WEIGHT PER FOOT	SETTING DEPTH	SACKS OF CEMENT	EST. TOP
17"	13 3/8"	48#	appr. 450'	400 sx	circ
12 1/4"	8 5/8"	24#	appr. 1350'	650 sx	circ
7 7/8"	5 1/2" or 4 1/2"	15.5-17# or 10.5-11.6#	TD	250 sx	

We propose to drill and test the Morrow and intermediate formations. Approximately 450' of surface casing will be set to shut off gravel and cavings and intermediate casing will be set 100' below the base of the Artesian Water Zone. Both strings will be circulated. 5 1/2" or 4 1/2" casing will be run and cemented with about 1000' of cement cover.

MUD PROGRAM: FW gel/LCM to 1250', water to 7600' (KCL added @4100'), flosal/drispak/KCL mud to TD, MW 8.9-9.1, Vis 35-40, WL 21-7.

BOP PROGRAM: BOP's/hydril on 8 5/8" casing, tested daily, yellow jacket prior to drilling Wolfcamp, fluid level & flow sensor equipment.

GAS NOT DEDICATEL.

APPROVAL VALID FOR 180 DAYS
PERMIT EXPIRES 12-28-84
UNLESS DRILLING UNDERWAY

ABOVE SPACE DESCRIBE PROPOSED PROGRAM; IF PROPOSAL IS TO DEEPEN OR PLUG BACK, GIVE DATA ON PRESENT PRODUCTIVE ZONE AND PROPOSED NEW PRODUCTIVE ZONE. GIVE BLOWOUT PREVENTER PROGRAM, IF ANY.

I hereby certify that the information above is true and complete to the best of my knowledge and belief.

Signed Cy Cowan Title Regulatory Agent Date 6/26/84

(This space for State Use)

APPROVED BY Mike Williams TITLE OIL AND GAS INSPECTOR DATE JUN 28 1984

CONDITIONS OF APPROVAL, IF ANY:

APPROVED BY Mike Williams TITLE OIL AND GAS INSPECTOR DATE JUN 28 1984

Post ID-1
6-29-84
BK + API

N MEXICO OIL CONSERVATION COMMISSION
WELL LOCATION AND ACREAGE DEDICATION PLAT

Form C-102
Supersedes C-128
Effective 1-1-65

All distances must be from the outer boundaries of the Section

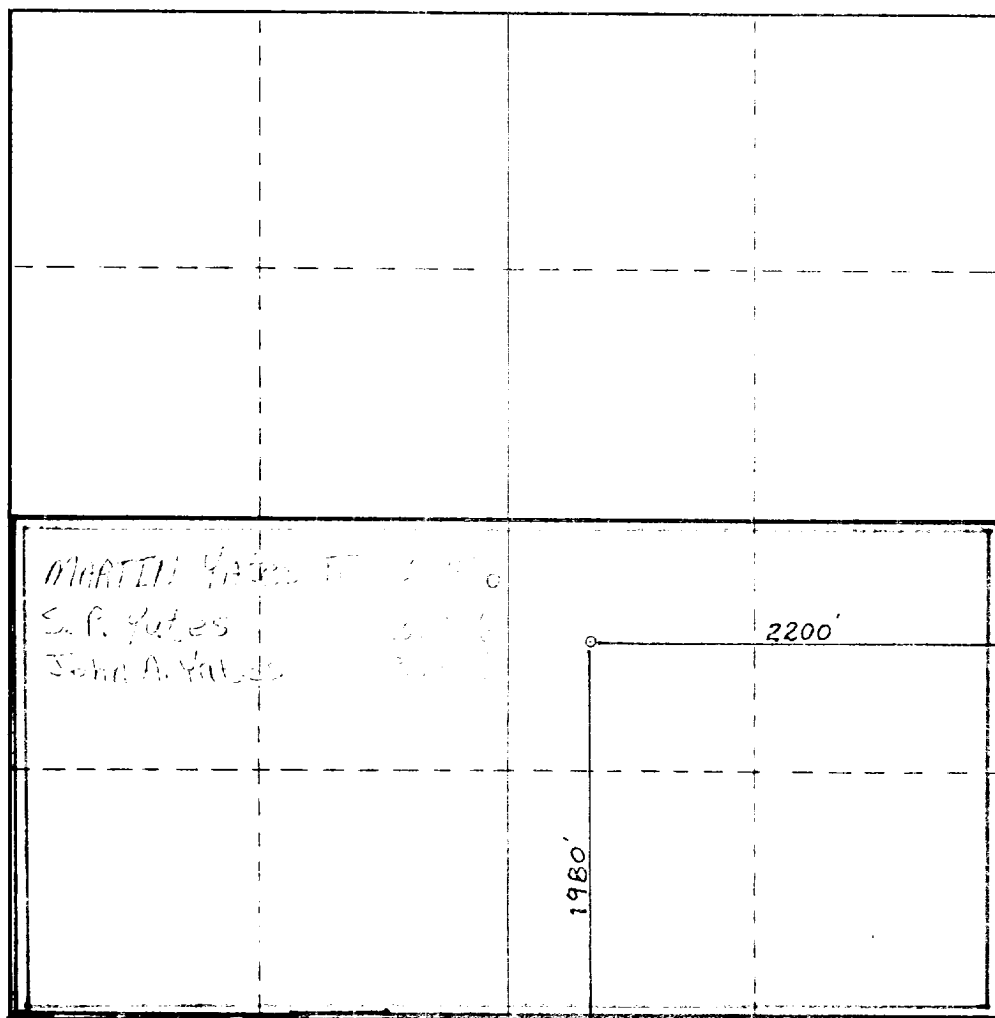
Operator YATES PETROLEUM CORPORATION		Lease Torrington ZK Com		Well No. 1
Unit Letter J	Section 8	Township 18 South	Range 26 East	County Eddy
Actual Footage Location of Well: 1980 feet from the South line and 2200 feet from the East line				
Ground Level Elev. 5398.	Producing Formation Morrow	Pool Under Morrow	Dedicated Acreage 320 Acres	

1. Outline the acreage dedicated to the subject well by colored pencil or hachure marks on the plat below.
2. If more than one lease is dedicated to the well, outline each and identify the ownership thereof (both as to working interest and royalty).
3. If more than one lease of different ownership is dedicated to the well, have the interests of all owners been consolidated by communitization, unitization, force-pooling, etc?

☒ Yes ☐ No If answer is "yes," type of consolidation **TO BE COMMUNITIZED**

If answer is "no," list the owners and tract descriptions which have actually been consolidated. (Use reverse side of this form if necessary.)

No allowable will be assigned to the well until all interests have been consolidated (by communitization, unitization, forced-pooling, or otherwise) or until a non-standard unit, eliminating such interests, has been approved by the Commission.



CERTIFICATION

I hereby certify that the information contained herein is true and complete to the best of my knowledge and belief.

Cy Cowan

Name
Cy Cowan

Position

Regulatory Agent

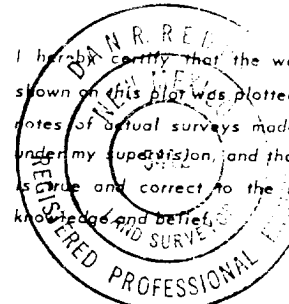
Company

Yates Petroleum Corp.

Date

6/26/84

I hereby certify that the well location shown on this plat was plotted from field notes of actual surveys made by me or under my supervision, and that the same is true and correct to the best of my knowledge and belief.



Date Surveyed

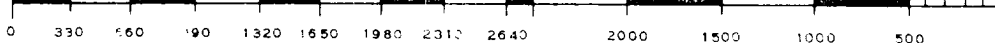
May 21, 1984

Registered Professional Engineer
and/or Land Surveyor

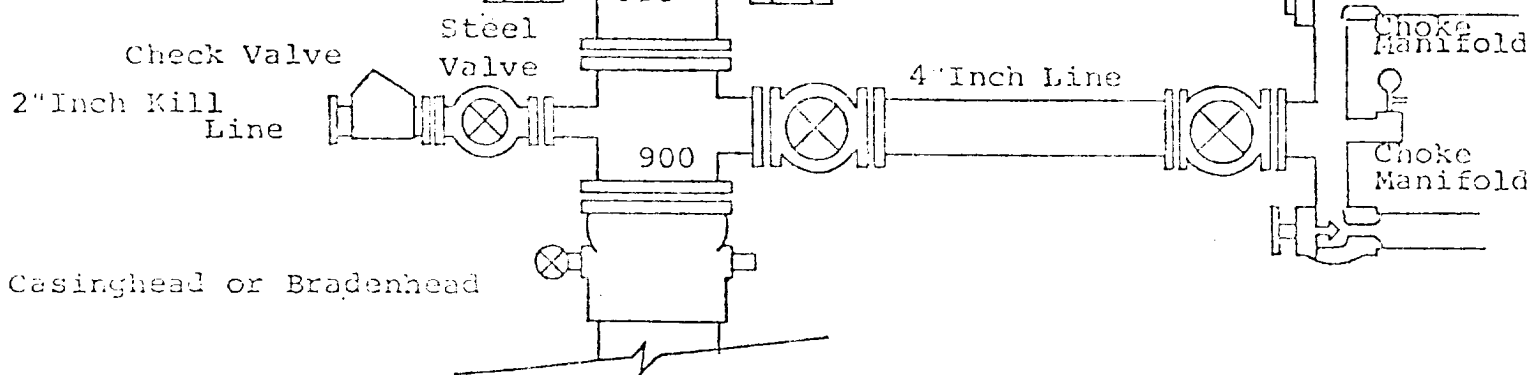
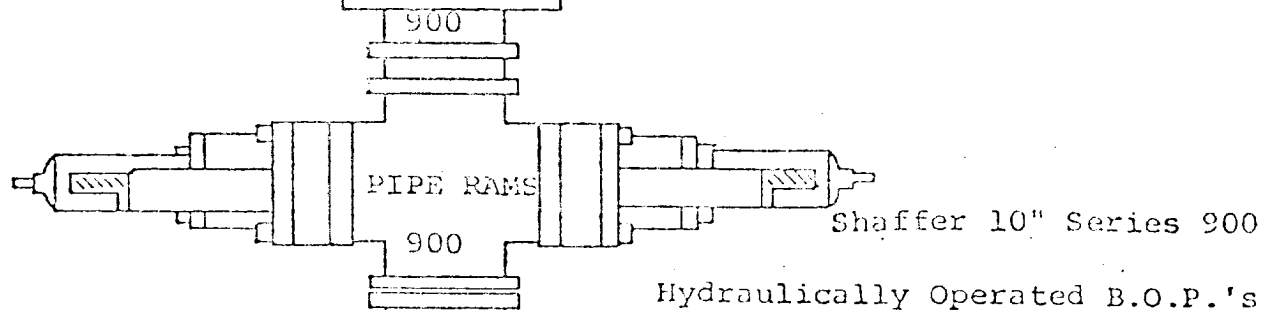
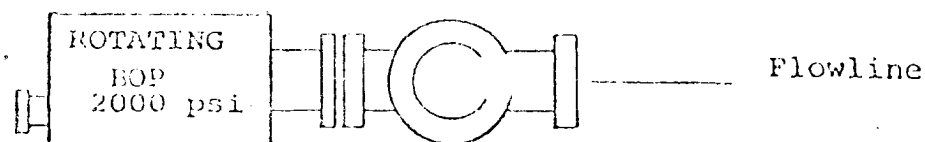
Dan R. Reddy

Certificate No.

NM PE&LS #5412



Rotating head if necessary
2" Fill up Line



THE FOLLOWING CONSTITUTE MINIMUM BLOWOUT PREVENTER REQUIREMENTS

1. All preventers to be hydraulically operated with secondary manual controls installed prior to drilling out from under casing.
2. Choke outlet to be a minimum of 4" diameter.
3. Kill line to be of all steel construction of 2" minimum diameter.
4. All connections from operating manifolds to preventers to be all steel. hole or tube a minimum of one inch in diameter.
5. The available closing pressure shall be at least 15% in excess of that required with sufficient volume to operate the B.O.P.'s.
6. All connections to and from preventer to have a pressure rating equivalent to that of the B.O.P.'s.
7. Inside blowout preventer to be available on rig floor.
8. Operating controls located a safe distance from the rig floor.
9. Hole must be kept filled on trips below intermediate casing.
10. D. P. float must be installed and used below zone of first gas intrusion.