

MEXICO OIL CONSERVATION COMMISS
WELL LOCATION AND ACREAGE DEDICATION PLAT

Form C-102
 Supersedes C-128
 Effective 1-4-65

All distances must be from the outer boundaries of the Section.

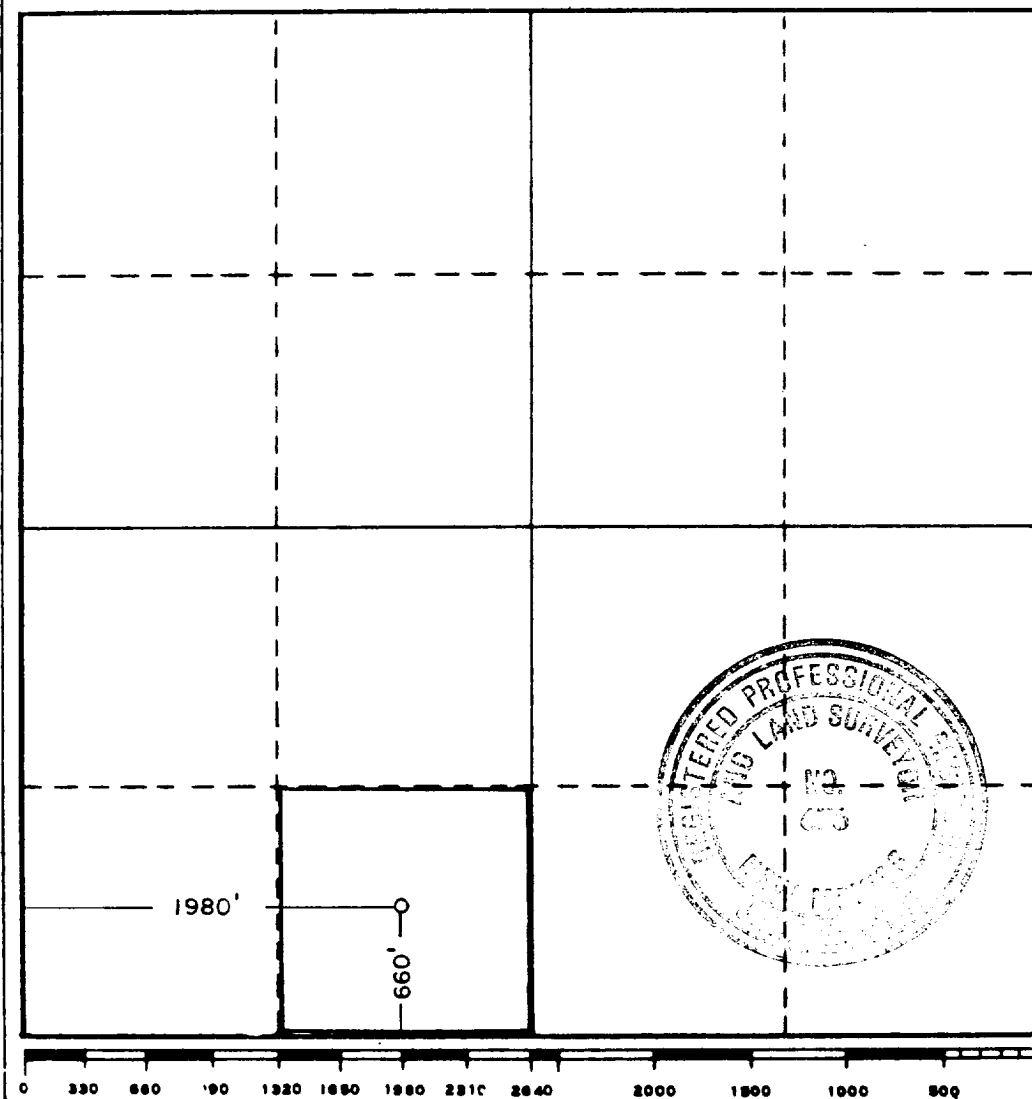
Operator Tenneco Oil Co.			Lease State JL 36		Well No. 2
Unit Letter N	Section 36	Township 18 South	Range 29 East	County Eddy	
Actual Footage Location of Well: 1980 feet from the West line and 660 feet from the South line					
Ground Level Elev. 3427	Producing Formation Grayburg		Pool Leo Queen, So. (Grayburg) Undersig.	Dedicated Acreage: 40 Acres	

1. Outline the acreage dedicated to the subject well by colored pencil or hatchure marks on the plat below.
2. If more than one lease is dedicated to the well, outline each and identify the ownership thereof (both as to working interest and royalty).
3. If more than one lease of different ownership is dedicated to the well, have the interests of all owners been consolidated by communitization, unitization, force-pooling, etc?

☐ Yes ☐ No If answer is "yes," type of consolidation _____

If answer is "no," list the owners and tract descriptions which have actually been consolidated. (Use reverse side of this form if necessary.) _____

No allowable will be assigned to the well until all interests have been consolidated (by communitization, unitization, forced-pooling, or otherwise) or until a non-standard unit, eliminating such interests, has been approved by the Commission.



CERTIFICATION

I hereby certify that the information contained herein is true and complete to the best of my knowledge and belief.

Name Ladell Collier
 Position Geological Engineer
 Company Tenneco Oil Company
 Date 28 June 1984

I hereby certify that the well location shown on this plat was plotted from field notes of actual surveys made by me or under my supervision, and that the same is true and correct to the best of my knowledge and belief.

June 8, 1984

Date Surveyed

Registered Professional Engineer and/or Land Surveyor

John W. West
 Certificate No. JOHN W. WEST, 676
RONALD J. EIDSON, 3239