

OIL CONSERVATION DIVISION  
P. O. BOX 2088  
SANTA FE, NEW MEXICO 87501  
SEP 26 1984  
O. C. D.  
ARTESIA, OREGON

Form C-101 30-015-25018  
Revised 10-1-78

NO. OF COPIES RECEIVED	
DISTRIBUTION	
SANTA FE	✓
FILE	✓
U.S.G.S.	2
LAND OFFICE	
OPERATOR	✓

5A. Indicate Type of Lease  
STATE ☐ FEE ☒  
5. State Oil & Gas Lease No.

APPLICATION FOR PERMIT TO DRILL, DEEPEN, OR PLUG BACK

4. Type of Work  
a. Type of Well DRILL ☒ DEEPEN ☐ PLUG BACK ☐  
b. Type of Well OIL WELL ☒ GAS WELL ☐ OTHER ☐ SINGLE ZONE ☐ MULTIPLE ZONE ☐  
c. Name of Operator YATES PETROLEUM CORPORATION  
d. Address of Operator 207 South 4th Street, Artesia, New Mexico 88210  
e. Location of Well UNIT LETTER J LOCATED 1980 FEET FROM THE South LINE  
ND 1980 FEET FROM THE East LINE OF SEC. 5 TWP. 13S RGE. 26E NMPM  
f. Elevations (show whether DE, KE, etc.) 3374' GL  
21A. Kind & Grade Plug. Bond Blanket  
21B. Drilling Contractor Undes.  
22. Approx. Date Work will start ASAP

7. Unit Agreement Name  
8. Farm or Lease Name Cole "AAE" Com.  
9. Well No. 1  
10. Field and Rock or Wildcat Undes. Morrow  
11. County Eddy  
12. County Eddy  
13. Proposed Depth approx. 8850'  
14A. Formation Morrow  
15. Rotary or C.T. Rotary  
16. Rotary or C.T. Rotary

PROPOSED CASING AND CEMENT PROGRAM

SIZE OF HOLE	SIZE OF CASING	WEIGHT PER FOOT	SETTING DEPTH	SACKS OF CEMENT	EST. TOP
17"	13 3/8"	48# K-55	appr. 500'	500 sx	circ.
12 1/4"	8 5/8"	24# K-55	appr. 1360'	650 sx	circ.
7 7/8"	5 1/2" or 4 1/2"	15.5-17# or 10.5-11.6#	TD	250 sx	

We propose to drill and test the Morrow and intermediate formations. Approximately 500' of surface casing will be set to shut off gravel and cavings and intermediate casing will be set 100' below the base of the Artesian Water Zone. Both strings will be circulated. 5 1/2" or 4 1/2" casing will be run and cemented with about 1000' of cement cover.

MUD PROGRAM: FW gel/LCM to 1360', water to 7600' (KCL added @4100'), flosal/drispak/KCL mud to TD, MW 8.9-9.1, Vis 35-40, WL 21-7.

BOP PROGRAM: BOP's/hydril on 8 5/8" casing, tested daily, yellow jacket prior to drilling Wolfcamp, fluid level & flow sensor equipment.

GAS NOT DEDICATED.

ABOVE SPACE DESCRIBE PROPOSED PROGRAM; IF PROPOSAL IS TO DEEPEN OR PLUG BACK, GIVE DATA ON PRESENT PRODUCTIVE ZONE AND PROPOSED NEW PRODUCTION ZONE. GIVE BLOWOUT PREVENTER PROGRAM, IF ANY.

I hereby certify that the information above is true and complete to the best of my knowledge and belief.

Signed Mike Williams Title Regulatory Agent Date 9/24/84  
(This space for State Use)

APPROVED BY Mike Williams TITLE Oil & Gas Inspector DATE SEP 26 1984

Noted by 8/5/8 in sufficient time to witness and signing the 8/5/8 meeting

**NEW MEXICO OIL CONSERVATION COMMISSION  
WELL LOCATION AND ACREAGE DEDICATION PLAT**

Form C-102  
Supersedes C-128  
Effective 1-1-65

All distances must be from the outer boundaries of the Section

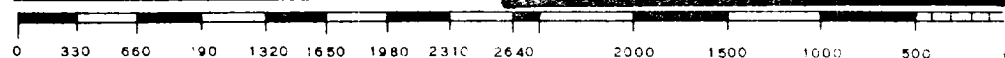
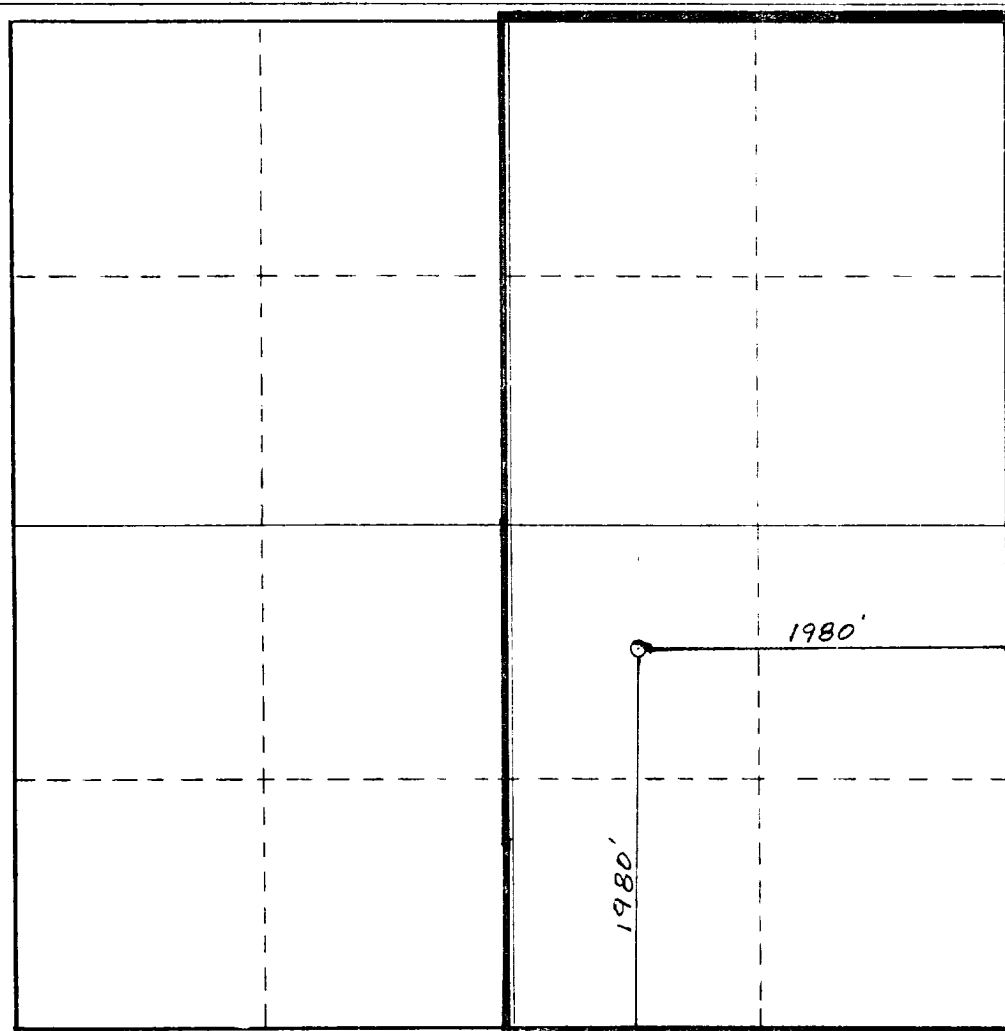
Operator <b>YATES PETROLEUM CORP.</b>			Lease <b>Cole Comm-AAE</b>		Well No. <b>1</b>
Unit Letter <b>J</b>	Section <b>5</b>	Township <b>18 S</b>	Range <b>26 E</b>	County <b>Eddy</b>	
Actual Footage Location of Well: <b>1980</b> feet from the <b>South</b> line and <b>1980</b> feet from the <b>East</b> line					
Ground Level Elev. <b>3374</b>	Producing Formation <b>Morrow</b>		Pool <b>W. r. h. L. L. Morrow</b>	Dedicated Acreage <b>3.20</b> Acres	

1. Outline the acreage dedicated to the subject well by colored pencil or hachure marks on the plat below.
2. If more than one lease is dedicated to the well, outline each and identify the ownership thereof (both as to working interest and royalty).
3. If more than one lease of different ownership is dedicated to the well, have the interests of all owners been consolidated by communitization, unitization, force-pooling, etc?

☒ Yes    ☐ No    If answer is "yes," type of consolidation to be communitized

If answer is "no," list the owners and tract descriptions which have actually been consolidated. (Use reverse side of this form if necessary.) \_\_\_\_\_

No allowable will be assigned to the well until all interests have been consolidated (by communitization, unitization, forced-pooling, or otherwise) or until a non-standard unit, eliminating such interests, has been approved by the Commission.



**CERTIFICATION**

I hereby certify that the information contained herein is true and complete to the best of my knowledge and belief.

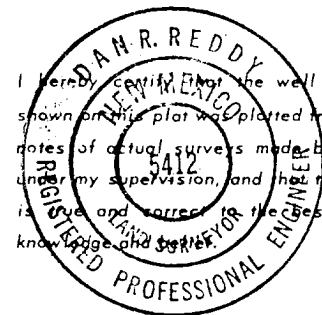
*Gliserio Rodriguez*  
Name  
**Gliserio Rodriguez**

Position  
**Regulatory Agent**

Company  
**Yates Petroleum Corporation**

Date  
**9/24/84**

I hereby certify that the well location shown on this plat was plotted from field notes of actual surveys made by me or under my supervision, and that the same is true and correct to the best of my knowledge and belief.

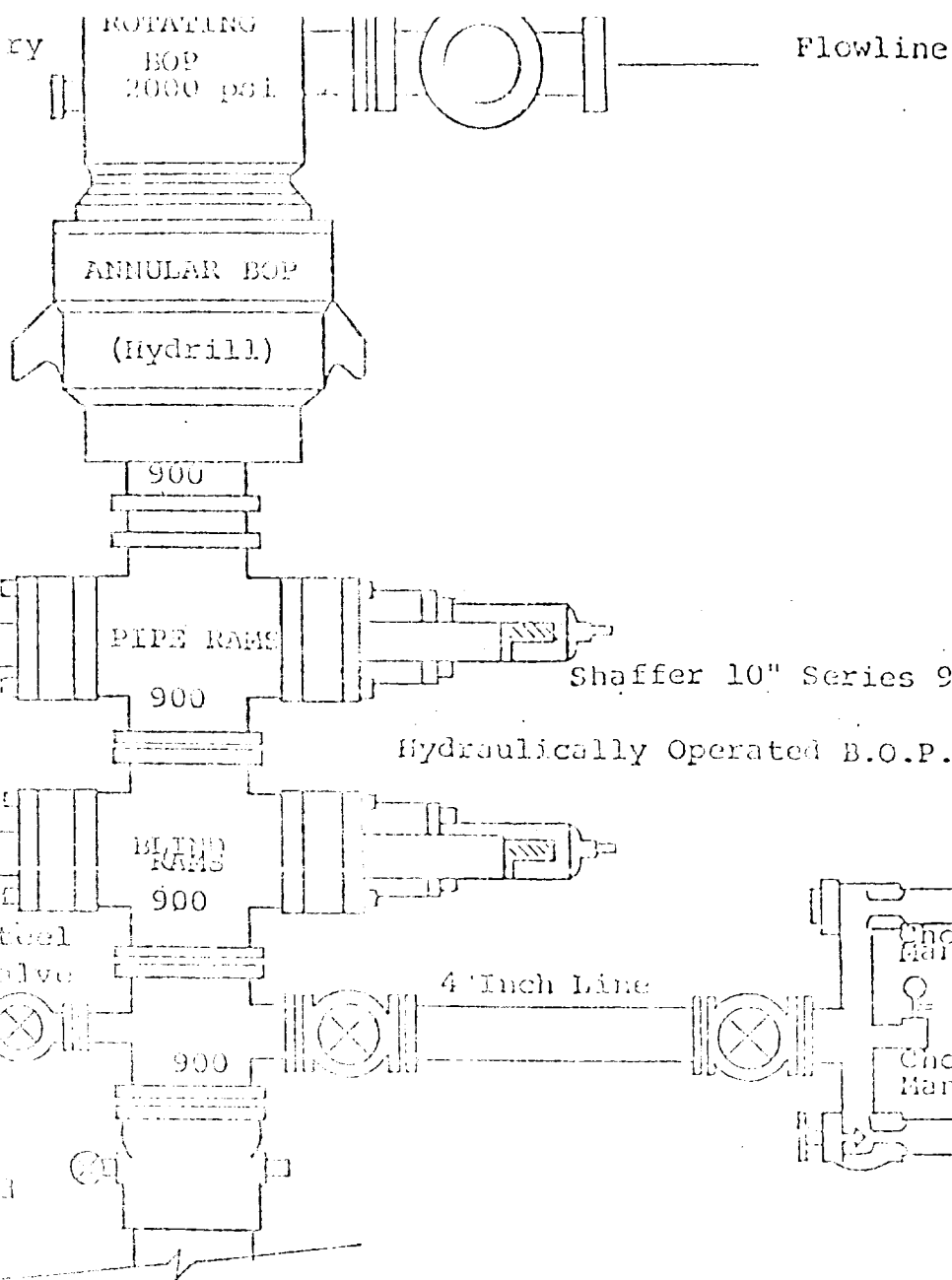


Date Surveyed  
**Sept. 13, 1984**

Registered Professional Engineer  
and/or Land Surveyor

*Dan R. Reddy*  
Certificate No.  
**NM PE&LS # 5412**

Rotating head if necessary  
2" Fill up Line



# THE FOLLOWING CONSIDER MINIMUM BLOWOUT PREVENTER REQUIREMENTS

1. All preventers to be hydraulically operated with secondary manual control installed prior to drilling out from under casing.
2. Choke outlet to be a minimum of 4" diameter.
3. Kill line to be of all steel construction of 2" minimum diameter.
4. All connections from operating manifolds to preventers to be all steel, hole or tube a minimum of one inch in diameter.
5. The available closing pressure shall be at least 15% in excess of that required with sufficient volume to operate the B.O.P.'s.
6. All connections to and from preventer to have a pressure rating equivalent to that of the B.O.P.'s.
7. Inside blowout preventer to be available on rig floor.
8. Operating controls located a safe distance from the rig floor.
9. Hole must be kept filled on trips below intermediate casing.
10. D. P. float must be installed and used below zone of first gas intrusion.