

UNITED STATES
DEPARTMENT OF THE INTERIOR
GEOLOGICAL SURVEYRECEIVED BY
SUBMIT IN 1
CATE*
Under instructions on
reverse side)

OCT 25 1984

APPLICATION FOR PERMIT TO DRILL, DEEPEN, OR PLUG BACK

1a. TYPE OF WORK

DRILL ☒DEEPEN ☐PLUG BACK ☐

b. TYPE OF WELL

OIL
WELL ☒GAS
WELL ☐OTHER ☐SINGLE
ZONE ☒MULTIPLE
ZONE ☐

2. NAME OF OPERATOR

Metex Pipe and Supply

3. ADDRESS OF OPERATOR

2407 Sierra Vista Rd. Artesia, N.M. 88210

4. LOCATION OF WELL (Report location clearly and in accordance with any State requirements.*)

At surface

1980' FSL & 2310' FEL

At proposed prod. zone

1980' FSL & 2310' FEL

14. DISTANCE IN MILES AND DIRECTION FROM NEAREST TOWN OR POST OFFICE*

7 miles South West of Loco Hills, N.M.

15. DISTANCE FROM PROPOSED*

LOCATION TO NEAREST
PROPERTY OR LEASE LINE, FT.
(Also to nearest drlg. unit line, if any)

330'

16. NO. OF ACRES IN LEASE

40

17. NO. OF ACRES ASSIGNED
TO THIS WELL

40

18. DISTANCE FROM PROPOSED LOCATION*

TO NEAREST WELL, DRILLING, COMPLETED,
OR APPLIED FOR, ON THIS LEASE, FT.

19. PROPOSED DEPTH

3500'

20. ROTARY OR CABLE TOOLS

ROTARY

21. ELEVATIONS (Show whether DF, RT, GR, etc.)

3535' GL

22. APPROX. DATE WORK WILL START*

November 5, 1984

23. PROPOSED CASING AND CEMENTING PROGRAM

SIZE OF HOLE	SIZE OF CASING	WEIGHT PER FOOT	SETTING DEPTH	QUANTITY OF CEMENT
12 1/4"	8 5/8"	23#	350'	circulate
7 7/8"	5 1/2"	15.5#	3500'	500 sx.

Propose to drill 12 1/4" hole to 350', set 8 5/8" casing and circulate cement, Cameron 11" BOP, 5000 lb., will be tested with rams closed and surface pipe tested prior to drilling out. Drilling mud will be freshwater Gel with viscosity of approximately 34. Logs will be Sidewall Neurron Porosity and Dual Lateral Log Micro SFL. No testing will be done until after the pipe has been cemented and well treated and or fractured. There have been no abnormal pressures, waterflows, or H₂S encountered in this area at this depth.

IN ABOVE SPACE DESCRIBE PROPOSED PROGRAM: If proposal is to deepen or plug back, give data on present productive zone and proposed new productive zone. If proposal is to drill or deepen directionally, give pertinent data on subsurface locations and measured and true vertical depths. Give blowout preventer program, if any.

24.

SIGNED

Martin B. Muey

TITLE owner

DATE October 8, 1984

(This space for Federal or State office use)

PERMIT NO.

APPROVAL DATE

AREA MANAGER

APPROVED BY

TITLE

CARLSBAD RESOURCE AREA

DATE

10-24-84

CONDITIONS OF APPROVAL, IF ANY:

*See Instructions On Reverse Side

APPROVAL SUBJECT TO
GENERAL REQUIREMENTS AND
SPECIAL STIPULATIONS

Approved

Instructions

General: This form is designed for submitting proposals to perform certain well operations, as indicated, on all types of lands and leases for appropriate action by either a Federal or a State agency or both, pursuant to applicable Federal and/or State laws and regulations. Any necessary special instructions concerning the use of this form and the number of copies to be submitted, particularly with regard to local, area, or regional procedures and practices, either are shown below or will be issued by, or may be obtained from, the local Federal and/or State office.

Item 1: If the proposal is to redrill to the same reservoir at a different subsurface location or to a new reservoir, use this form with appropriate notations. Consult applicable State or Federal regulations concerning subsequent work proposals or reports on the well.

Item 4: If there are no applicable State requirements, locations on Federal or Indian land should be described in accordance with Federal requirements. Consult local State or Federal office for specific instructions.

Item 14: Needed only when location of well cannot readily be found by road from the land or lease description. A plat, or plats, separate or on this reverse side, showing the roads to, and the surveyed location of, the well, and any other required information, should be furnished when required by Federal or State agency offices.

Items 15 and 18: If well is to be, or has been directionally drilled, give distances for subsurface location of hole in any present or objective production zone.

Item 22: Consult applicable Federal or State regulations, or appropriate officials, concerning approval of the proposal before operations are started.

U.S. GOVERNMENT PRINTING OFFICE : 1963-O-711-396

8 39-171

ESTIMATED FORMATION TOPS:

Salt-----	300'
Yates-----	1100'
Seven Rivers-----	1400'
Queen-----	2050'
Grayburg-----	2400'
San Andres-----	2850'

NEW MEXICO OIL CONSERVATION COMMISSION
WELL LOCATION AND ACREAGE DEDICATION PLAT

Form C-102
Supersedes C-128
Effective 1-1-65

All distances must be from the outer boundaries of the Section.

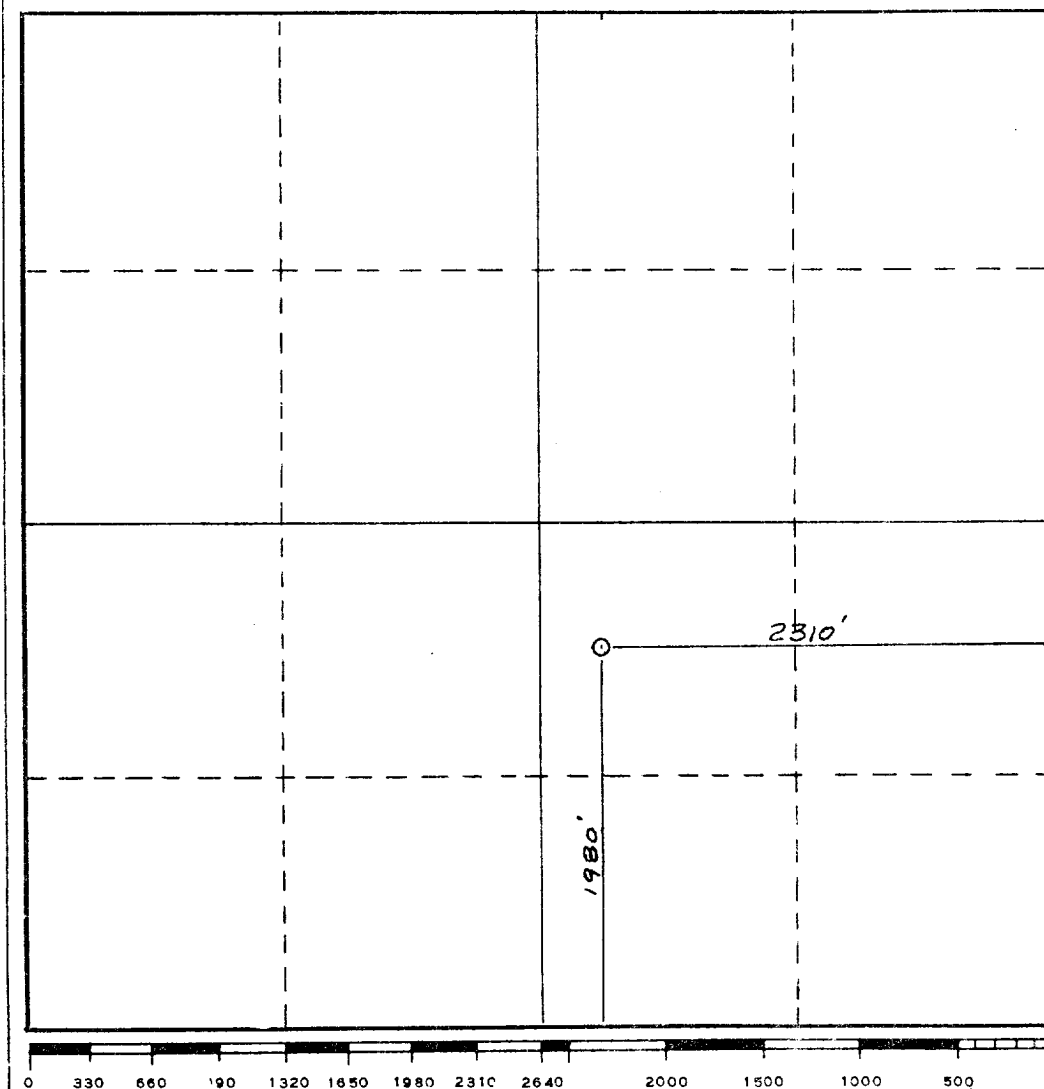
Operator Metex Pipe and Supply		Lease DENTON FEDERAL		Well No. 9
Unit Letter J	Section 20	Township 18 South	Range 29 East	County Eddy
Actual Footage Location of Well: 1980 feet from the South line and 2310 feet from the East line				
Ground Level Elev. 3535.	Producing Formation GRAYBURG	Pool Loco Hills	Dedicated Acreage: 40 Acres	

1. Outline the acreage dedicated to the subject well by colored pencil or hachure marks on the plat below.
2. If more than one lease is dedicated to the well, outline each and identify the ownership thereof (both as to working interest and royalty).
3. If more than one lease of different ownership is dedicated to the well, have the interests of all owners been consolidated by communitization, unitization, force-pooling, etc?

☐ Yes ☐ No If answer is "yes," type of consolidation _____

If answer is "no," list the owners and tract descriptions which have actually been consolidated. (Use reverse side of this form if necessary.) _____

No allowable will be assigned to the well until all interests have been consolidated (by communitization, unitization, forced-pooling, or otherwise) or until a non-standard unit, eliminating such interests, has been approved by the Commission.



CERTIFICATION

I hereby certify that the information contained herein is true and complete to the best of my knowledge and belief.

Name
owner
Martin E. Muncy

Position
Metex Pipe and Supply

Company
October 8, 1984

Date

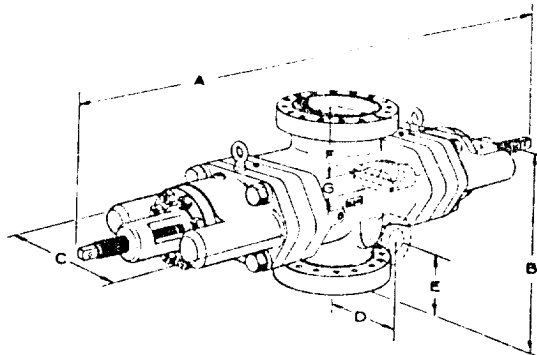
AN R. REDD
NEW MEXICO
REGISTERED PROFESSIONAL ENGINEER
I hereby certify that the well location shows as this plat was plotted from field notes of actual surveys made by me or under my supervision, and that the same is true and correct to the best of my knowledge and belief.

Date Surveyed
September 19, 1984

Registered Professional Engineer and/or Land Surveyor

Certificate No.
NM PE&LS #5412

U BLOWOUT PREVENTER ENGINEERING DATA



Single Open Face Flanged U Blowout Preventer

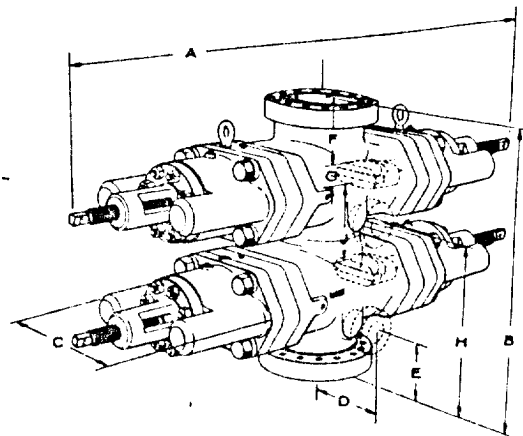
Side Outlets to 4" size (7-1/16" on 26-3/4" preventers) can be provided beneath each set of rams, on either or both sides of U preventers. Side outlet flanges are open face and have the same pressure rating as the vertical run flanges. Valve removal preparations can be provided. To obtain a quotation, the number and size of outlets should be specified.

Flanges conform to API Standard 6A. Type 6BX flanges are standard for 10,000 psi, 15,000 psi, and 20,000 psi working pressures and for 5000 psi working pressures for 13-5/8" and larger bore preventers.

Although most preventers have open face flanges or Cameron clamp hubs, preventers with studded flanges can be furnished.

Sizes and Dimensions are in inches. The over-all length "A" given in the tables does not include the optional wedgelocks. No spacers between rams are included in the table of dimensions of double ram models. Preventers with spacers to clear tool joints can be obtained on special order. For information on preventers with spacers, or sizes not listed, consult your Cameron representative.

Hydraulic Control Connections to operate rams and bonnets are 1" NPT. There are two connections for each set of rams. Hydraulic ram lock connections are 1/2" NPT.



Double Open Face Flanged U Blowout Preventer

Engineering Data Designations. See Charts on Following Page

- A-1 Over-all length, bonnets closed, locking screws locked
- A-2 Over-all length, ram change, bonnets opened, locking screws unlocked
- B-1 Over-all height flanged
- B-2 As above, with Cameron clamp hubs
- C Over-all width without side outlets (max. width)
- D Centerline of preventer to outlet flange or hub face. Distance is variable.
- E-1 Centerline of side outlet (outlet below lower rams in double model) to bottom flange face
- E-2 As above, to bottom hub face
- F-1 Top of upper ram to top flange face
- F-2 As above, to top hub face
- G Ram height
- H-1 Centerline of side outlet between rams to bottom flange face
- H-2 As above, to bottom hub face
- J Top of lower ram to bottom of upper ram

11" 5000# DOUBLE

Metex Pipe and Supply

Denton Fed. #9
1980'FSL & 2310'FEL
S-20, T-18S, R-29E
Eddy Co., N.M.

EXHIBIT 'E'

METEX PIPE & SUPPLY

2407 SIERRA VISTA RD.
ARTESIA, NEW MEXICO 88210

APPLICATION FOR DRILLING Denton Fed. #9

In conjunction with for 9-331C, Application for Permit to Drill subject well, Metex Pipe and Supply submits the following items of pertinent information in accordance with MMS/BLM.

1. The geologic surface formation is quaternary.
2. The estimated tops of geologic markers are as follows:
Base of Salt-----300'
Yates-----1100'
Seven Rivers--1400'
Queen-----2050'
Grayburg-----2400'
San Andres----2850'
3. The estimated depth at which anticipated water, oil, or gas formations are expected to be encountered:
Water: Possible in random sands from surface to 240'
Oil: Possible in Seven Rivers, Queen, Grayburg, San Andres at depths listed in item #2.
Gas: Possible association with oil .
4. Proposed casing program: See Form 9-331C.
5. Pressure Control Equipment: See form 9-331-C, Exhibit 'E'.
6. Drilling mud: Surface to 350' will be fresh water gel and native mud.
350' to T.D. will be brine water gel.
7. Testing, logging, and coring.
DST: None planned
Logging: GR/SNP to T.D. CCL/CBL T.D. to Surface
Coring: none planned
8. No abnormal pressures or temperatures are anticipated.
9. Anticipated starting date: as soon as possible.

R 30 E 104° 00'
32° 45'

R 29 E 05'

T 18 S

T 19 S

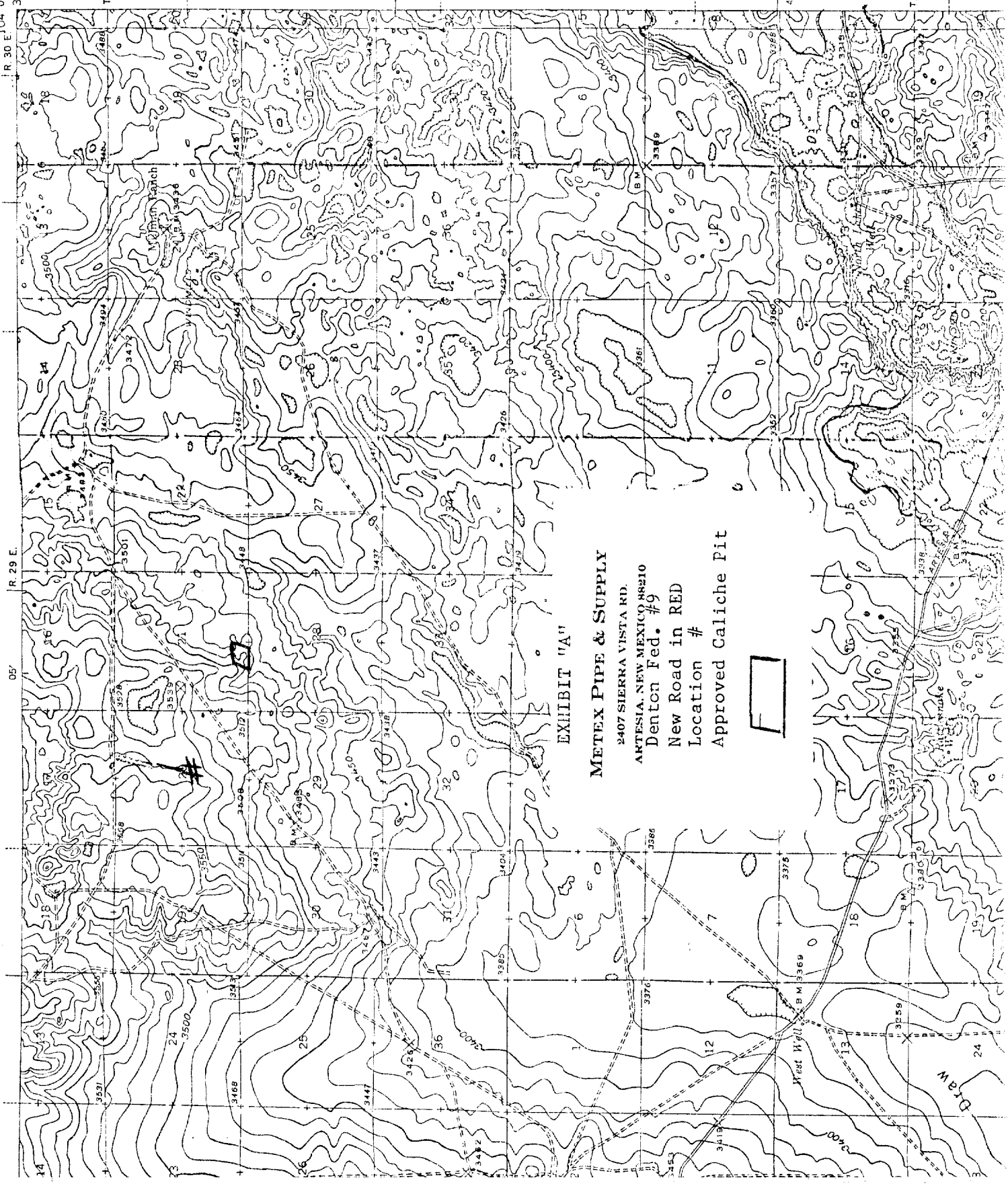


EXHIBIT "A"

METEX PIPE & SUPPLY

2407 SIERRA VISTA RD.

ARTESIA, NEW MEXICO 88210

Denton Fed. #9

New Road in RED

Location #

Approved Caliche Pit



Draw

SOUTH
NORTH

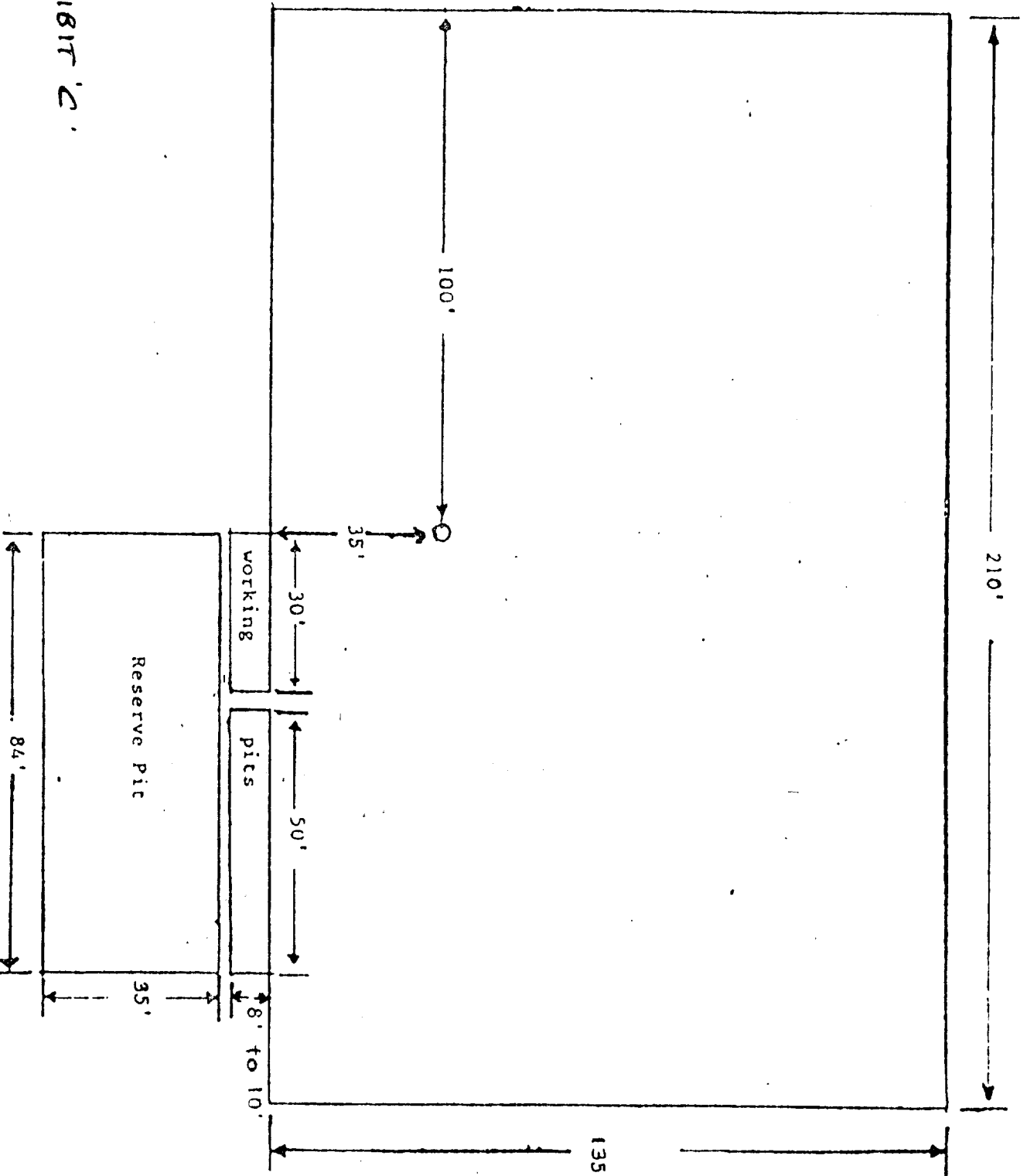


EXHIBIT C

METEX PIPE & SUPPLY
2407 SIERRA VISTA RD.
ARTESIA, NEW MEXICO 88210

Denton Fed. #9
1980 FSL & 2310 FEL
S-20, T-18S, R-29E