

Artesia, NM 88210 UNITED STATES
DEPARTMENT OF THE INTERIOR
GEOLOGICAL SURVEY

RECEIVED BY
SUBMIT IN TRIPLICATE
(Other instructions on reverse side)

NOV 06 1984

O. C. D.

Form approved.
Budget Bureau No. 42-R1425.

30-015-25085

clsp

APPLICATION FOR PERMIT TO DRILL, DEEPEN, OR PLUG BACK

1a. TYPE OF WORK

DRILL ☒

DEEPEN ☐

PLUG BACK ☐

b. TYPE OF WELL

OIL WELL ☐

GAS WELL ☐

OTHER ☒ X-Water Inj. Well

SINGLE ZONE ☐

MULTIPLE ZONE ☐

2. NAME OF OPERATOR

Anadarko Production Company ✓

3. ADDRESS OF OPERATOR

P. O. Drawer 130, Artesia, New Mexico 88210

4. LOCATION OF WELL (Report location clearly and in accordance with any State requirements.)*

At surface

1980' FNL & 1310' FWL

At proposed prod. zone Same

14. DISTANCE IN MILES AND DIRECTION FROM NEAREST TOWN OR POST OFFICE*

Approximately 7 miles Southwest of Loco Hills, New Mexico

15. DISTANCE FROM PROPOSED*

LOCATION TO NEAREST
PROPERTY OR LEASE LINE, FT.
(Also to nearest drig. unit line, if any)

10'

16. NO. OF ACRES IN LEASE

2600

17. NO. OF ACRES ASSIGNED

TO THIS WELL
40

18. DISTANCE FROM PROPOSED LOCATION*

TO NEAREST WELL, DRILLING, COMPLETED,
OR APPLIED FOR, ON THIS LEASE, FT.

750'

19. PROPOSED DEPTH

2880'

20. ROTARY OR CABLE TOOLS

Rotary

21. ELEVATIONS (Show whether DF, RT, GR, etc.)

3536.4' GL

22. APPROX. DATE WORK WILL START*

October 15, 1984

23. PROPOSED CASING AND CEMENTING PROGRAM

SIZE OF HOLE	SIZE OF CASING	WEIGHT PER FOOT	SETTING DEPTH	QUANTITY OF CEMENT
12-1/4"	8-5/8"	24.0#	300'	250 sx. circulated
7-7/8"	4-1/2"	10.5#	2880'	750 sx. circulated

1. Rig up rotary tools.
 2. Drill 12-1/4" hole to approx. 300'; set & circulate or ~~ready mix~~ cement to surface on 8-5/8" casing. Install & test Series 900 Double Ram Hydraulic Blow Out Preventor.
 3. Drill 7-7/8" hole to T D (approx. 2880'); possibly run Open Hole Logs.
 4. Set & circulate cement on 4 1/2" casing from T D to surface.
 5. Perforate and acidize Grayburg Zone.
 6. Equip braidenhead and casing head with pipe & valves brought to the surface (valves open) as an "attention getting device" of possible tubing, casing or packer leaks.
 7. Run 2-3/8" SALTA (internally plastic lined) tubing with 4 1/2" injection packer.
 8. Set packer approx. 50' above top perfs; pressure test casing to NMOCD specifications; unset packer, circulate packer fluid & reset packer.
 9. Hook up well head for water injection.
 10. Commence water injection in accordance with NMOCD Order R7000, Case #7572 dated 6/11/82.
- Note: A hearing is scheduled in Santa Fe to obtain approval of this unorthodox location and amend NMOCD Order R7000, Case #7572 to include this well - BGSAU Tract No. 10, Well No. 9

IN ABOVE SPACE DESCRIBE PROPOSED PROGRAM: If proposal is to deepen or plug back, give data on present productive zone and proposed new productive zone. If proposal is to drill or deepen directionally, give pertinent data on subsurface locations and measured and true vertical depths. Give blowout preventer program, if any.

24.

SIGNED Truman D. Jones

TITLE Field Foreman

DATE Sept. 28, 1984

(This space for Federal or State office use)

PERMIT NO. 10-10-10

APPROVAL DATE

APPROVED BY

TITLE CARLSBAD RESOURCE AREA

DATE 11-5-84

CONDITIONS OF APPROVAL, IF ANY:

Subject to
Like Approval
by State

*See Instructions On Reverse Side

APPROVAL SUBJECT TO
GENERAL REQUIREMENTS AND
SPECIAL STIPULATIONS
ATTACHED

NEW MEXICO OIL CONSERVATION COMMISSION
WELL LOCATION AND ACREAGE DEDICATION PLAT

Form C-102
Supersedes C-128
Effective 1-1-65

All distances must be from the outer boundaries of the Section.

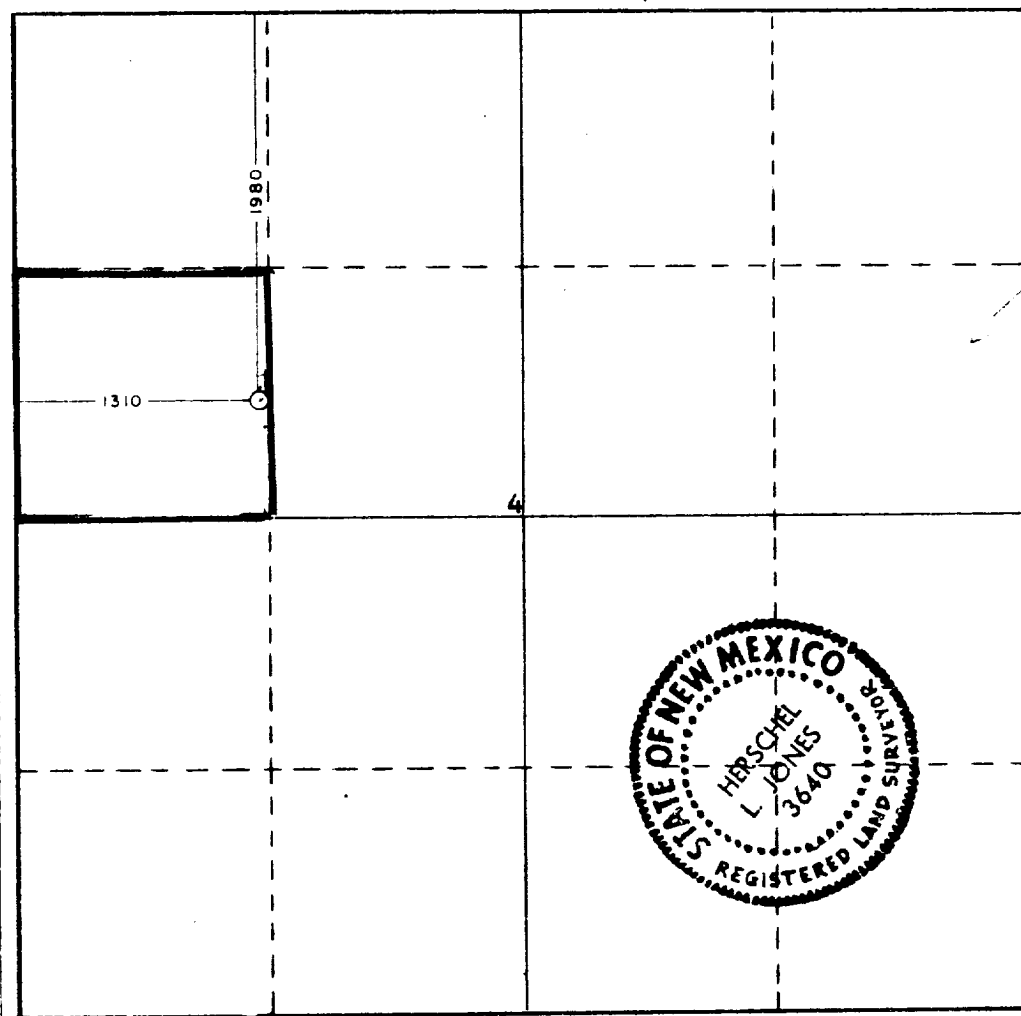
Operator ANADARKO PRODUCTION COMPANY			Lease Ballard Grayburg SA Unit Tr.10		Well No. 9
Unit Letter E	Section 4	Township 18 South	Range 29 East	County Eddy	
Actual Footage Location of Well: 1980 feet from the North line and 1310 feet from the West line					
Ground Level Elev. 3536.4	Producing Formation Grayburg		Pool Loco Hills-Queen-Grayburg-San Andres	Dedicated Acreage: 40 Acres	

1. Outline the acreage dedicated to the subject well by colored pencil or hatchure marks on the plat below.
2. If more than one lease is dedicated to the well, outline each and identify the ownership thereof (both as to working interest and royalty).
3. If more than one lease of different ownership is dedicated to the well, have the interests of all owners been consolidated by communitization, unitization, force-pooling, etc?

☒ Yes ☐ No If answer is "yes," type of consolidation Unitization

If answer is "no," list the owners and tract descriptions which have actually been consolidated. (Use reverse side of this form if necessary.) _____

No allowable will be assigned to the well until all interests have been consolidated (by communitization, unitization, forced-pooling, or otherwise) or until a non-standard unit, eliminating such interests, has been approved by the Commission.



CERTIFICATION

I hereby certify that the information contained herein is true and complete to the best of my knowledge and belief.

Name

Jerry E. Buckles

Position

Area Supervisor

Company

Anadarko Production Company

Date

September 24, 1984

I hereby certify that the well location shown on this plat was plotted from field notes of actual surveys made by me or under my supervision, and that the same is true and correct to the best of my knowledge and belief.

Date Surveyed

September 18, 1984

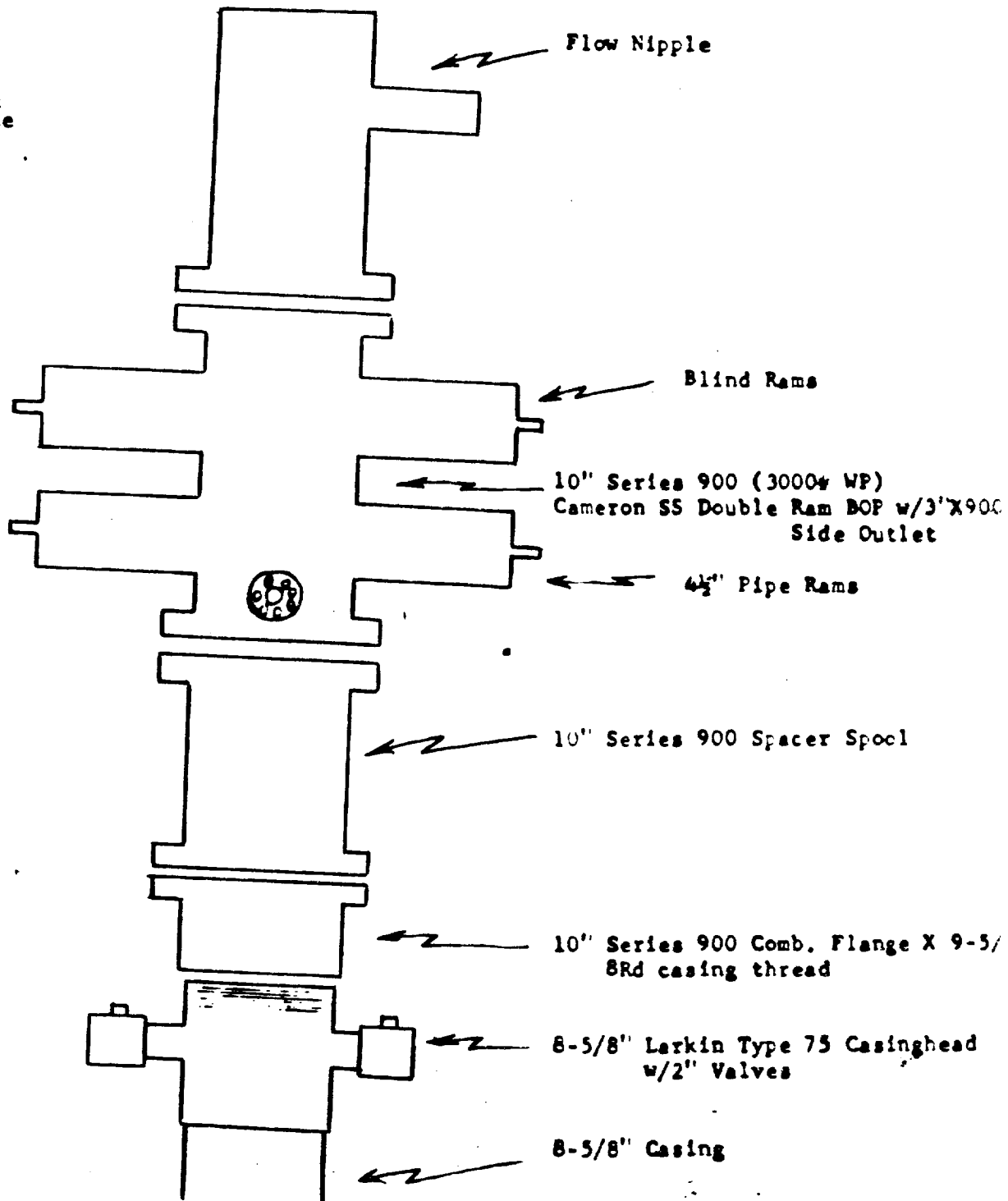
Registered Professional Engineer and/or Land Surveyor

Certificate No.

3640

0 330 660 990 1320 1650 1980 2310 2640 2000 1500 1000 500 0

Closing Unit
4 Stage Payne



B O P Schematic

DATA SHEET

This data sheet is provided in reference to the attached "Application for Permit to Drill: Anadarko's Gallard Grayburg San Andres Unit Tract No. 10, Well No. 9

1. Location: 1980' FNL & 1310' FWL Sec. 4, T18S, R29E, Eddy County, New Mexico
2. Elevation: 3536.4' GL
3. Geological Name of Surface Formation: Triassic Doakum (Santa Rosa)
4. Type of Drilling Tools to be utilized: Rotary
5. Proposed Drilling Depth: 2880'
6. Tops of Important Geological Markers:

T. Salt - -	330'	7-Rivers - -	1300'
B. Salt - -	800'	Queen - - -	1980'
Tansill - -	825'	Grayburg - -	2390'
Yates - - -	900'	San Andres -	2810'

7. Estimated Depth of Anticipated Water, Oil or Gas:

Oil: - - 2400 - 2800

8. Casing Program:

8-5/8" - 24.0# K-55, or J-55 - New
4-1/2" - 10.5# K-55 or J-55 - New

9. Setting Depth of Casing:

8-5/8" - 300' - approx. 250 sx cement
4-1/2" - 2880' - approx. 750 sx cement

10. Specifications for Pressure Control Equipment: (See attached Schematic)

This rig will have a Series 900 BOP with 4½ Blind Rams, kill line and choke manifold; Koomey Hydraulic controls & accumulator with remote controls. When nipping up, test BOP and Choke to 1000 psi. Operate BOP equipment once a day, or as directed by Company Representative.

11. Mud Program:

Spud and drill with fresh water native mud to a depth of approx. 300'. Drill out from under surface casing with 10# brine water to within 50' of T D while maintaining a Ph of 10. At this point paper & gel will be used to clean hole prior to running O. H. Logs.

12. Testing, Logging & Coring Program:

- a. Testing: No drill stem testing is scheduled.
- b. Coring: No coring is planned.
- c. Logging: Open Hole Logs will be run prior to running 4½" casing.

13. Potential Hazards:

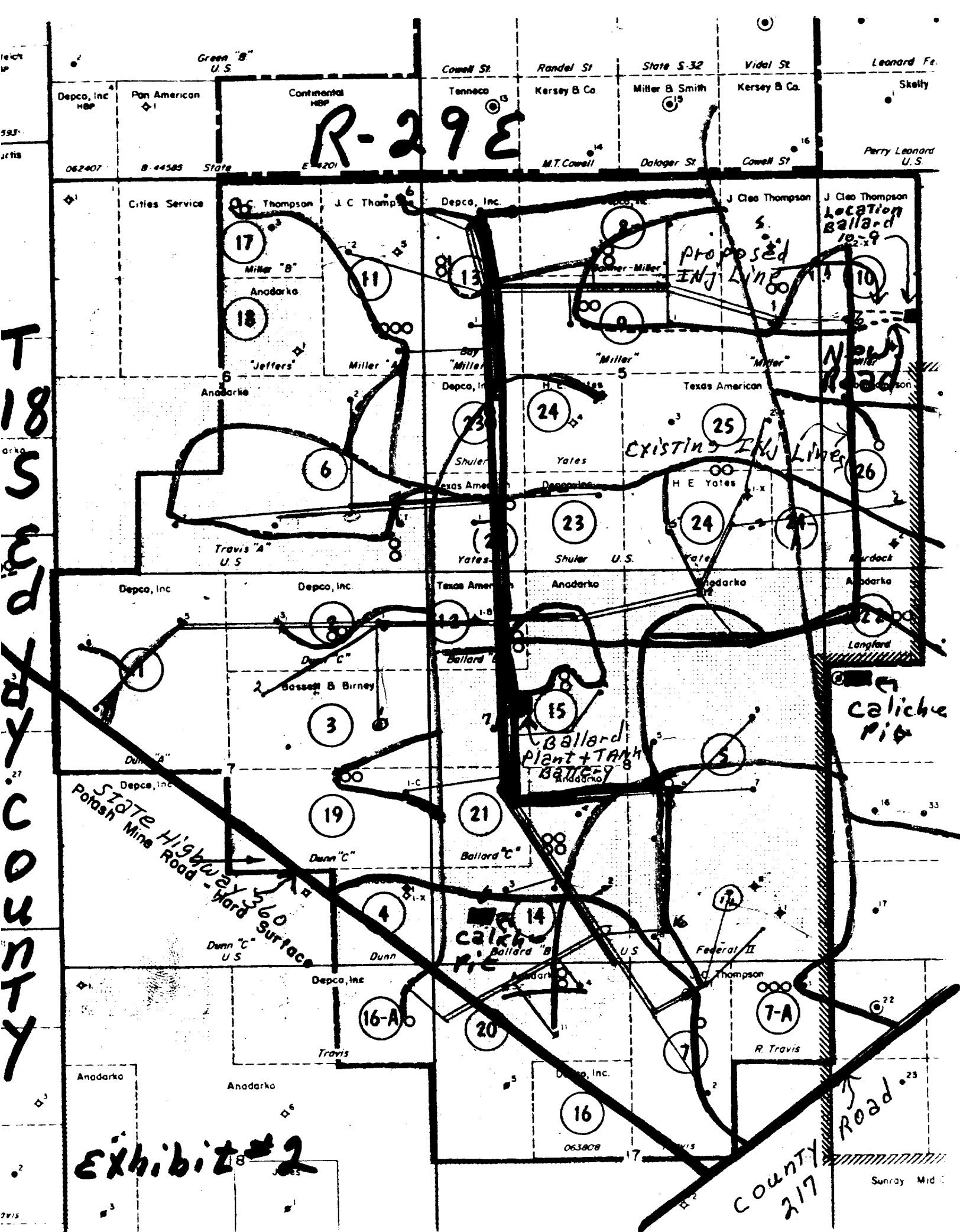
None are expected. Above described BOP should take care of any blowout. Numerous wells have been drilled in this area without problems.

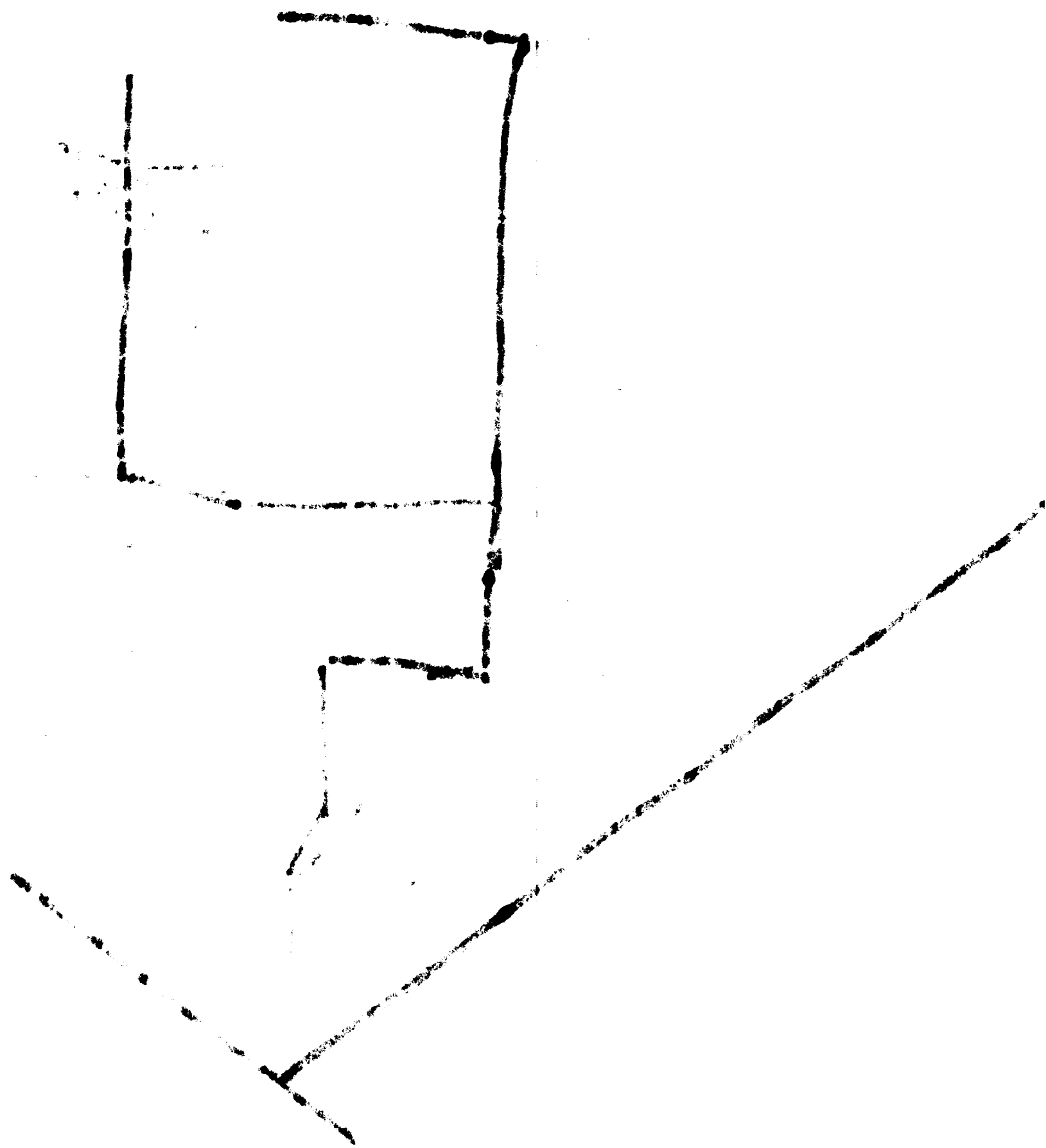
14. Anticipated Starting Date & Duration:

Plan to begin drilling operations about Oct. 15, 1984; approx 6 days are required to drill the well & 2 weeks for completion.

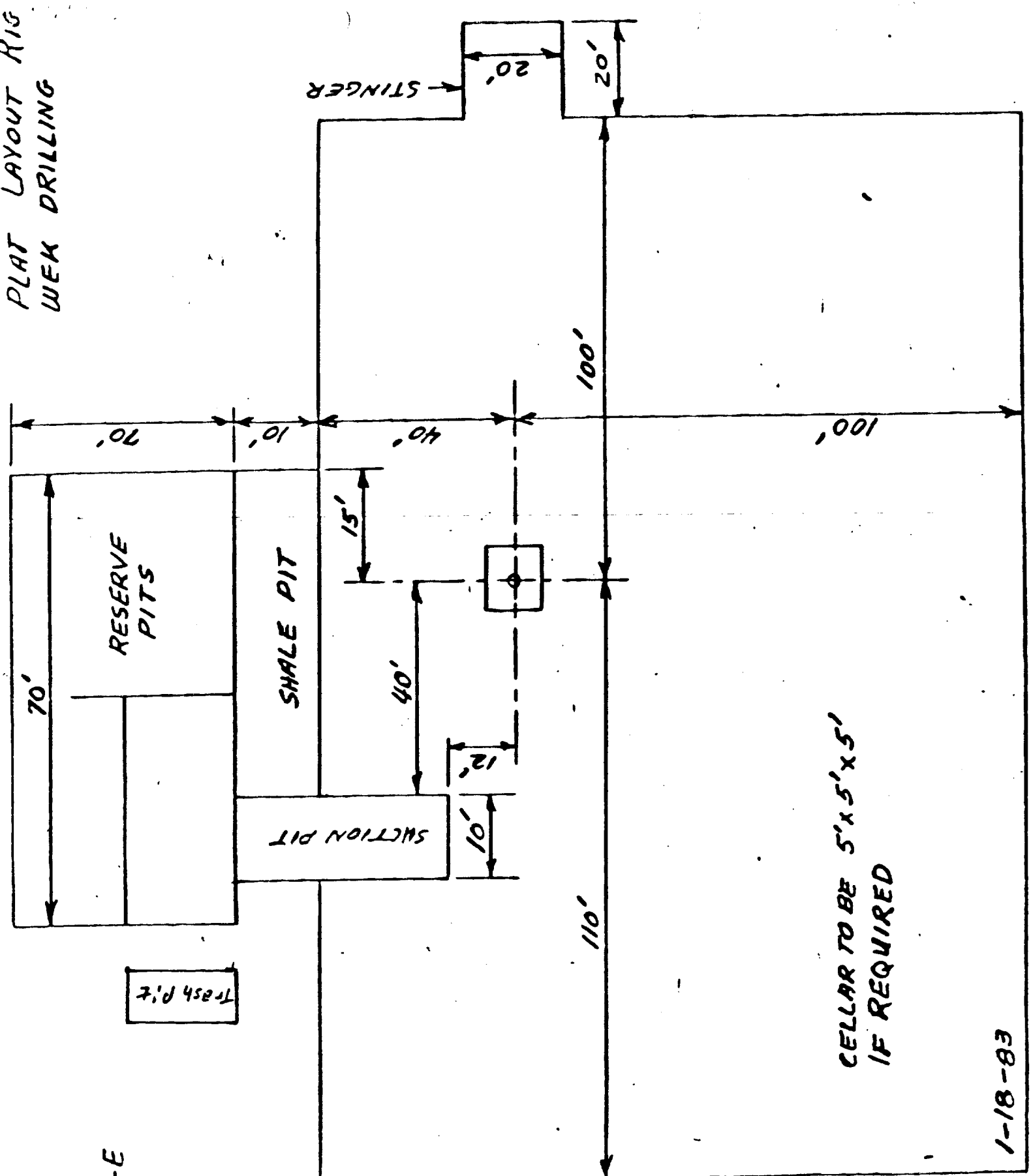
15. Other Facets:

None.





PLAT LAYOUT HIS
WEK DRILLING



CELLAR TO BE 5'x5'x5'
IF REQUIRED

1-18-83

EXHIBIT #3