

UNITED STATES
DEPARTMENT OF THE INTERIOR
BUREAU OF LAND MANAGEMENT
ARTESIA, OFFICE

RECEIVED

NOV 19 1984

SUBMIT D. IPLICATE*
Other instructions on reverse side

30-015-25099
Form approved.
Budget Bureau No. 1004-0136
Expires August 31, 1985

APPLICATION FOR PERMIT TO DRILL, DEEPEN, OR PLUG BACK

1a. TYPE OF WORK

DRILL ☒

DEEPEN ☐

PLUG BACK ☐

b. TYPE OF WELL

OIL WELL ☒

GAS WELL ☐

OTHER

SINGLE ZONE ☒

MULTIPLE ZONE ☐

2. NAME OF OPERATOR

COLLIER ENERGY, INC. ✓

(Deeg Becker)

(505-746-2776)

3. ADDRESS OF OPERATOR

P. O. Drawer R, Artesia, New Mexico 88210

4. LOCATION OF WELL (Report location clearly and in accordance with any State requirements.)*

At surface

1869'

1709' FNL & 990' FEL of Section

At proposed prod. zone
same

(Unit H)

(SE 1/4 NE 1/4)

14. DISTANCE IN MILES AND DIRECTION FROM NEAREST TOWN OR POST OFFICE*

11 air miles east-southeast of Artesia, NM

15. DISTANCE FROM PROPOSED*

LOCATION TO NEAREST

PROPERTY OR LEASE LINE, FT.

(Also to nearest drlg. unit line, if any)

990'

(330')

18. DISTANCE FROM PROPOSED LOCATION*

TO NEAREST WELL, DRILLING, COMPLETED,

OR APPLIED FOR, ON THIS LEASE, FT.

3700'

16. NO. OF ACRES IN LEASE

480

17. NO. OF ACRES ASSIGNED

TO THIS WELL

40

19. PROPOSED DEPTH

2600'

20. ROTARY OR CABLE TOOLS

Rotary

21. ELEVATIONS (Show whether DF, RT, GR, etc.)

3604' GR

22. APPROX. DATE WORK WILL START*

October 24, 1984

23.

PROPOSED CASING AND CEMENTING PROGRAM

| SIZE OF HOLE | SIZE OF CASING | WEIGHT PER FOOT | SETTING DEPTH | QUANTITY OF CEMENT |
|--------------|----------------|-----------------|---------------|-------------------------|
| 11" | 8 5/8" | 24# | 350' | Sufficient to circulate |
| 7 7/8" | 5 1/2" | 14# | 2600' | 200 sacks |

Pay zone will be selectively perforated and stimulated as needed for optimum production.

Attached are: 1. Well Location & Acreage Dedication Plat
2. Supplemental Drilling Data
3. Surface Use Plan

IN ABOVE SPACE DESCRIBE PROPOSED PROGRAM: If proposal is to deepen or plug back, give data on present productive zone and proposed new productive zone. If proposal is to drill or deepen directionally, give pertinent data on subsurface locations and measured and true vertical depths. Give blowout preventer program, if any.

24. SIGNED James A. Knauf TITLE Agent DATE October 8, 1984
(This space for Federal or State office use)

PERMIT NO.

APPROVAL DATE

APPROVED BY Scott Adams
CONDITIONS OF APPROVAL, IF ANY:

AREA MANAGER
CARLSBAD RESOURCE AREA

DATE

11-15-84

APPROVAL SUBJECT TO
GENERAL REQUIREMENTS AND
SPECIAL STIPULATIONS

*See Instructions On Reverse Side

Title 18 U.S.C. Section 1001, makes it a crime for any person knowingly and willfully to make to any department or agency of the United States any false, fictitious or fraudulent statements or representations as to any matter within its jurisdiction.

All distances must be from the outer boundaries of the Section.

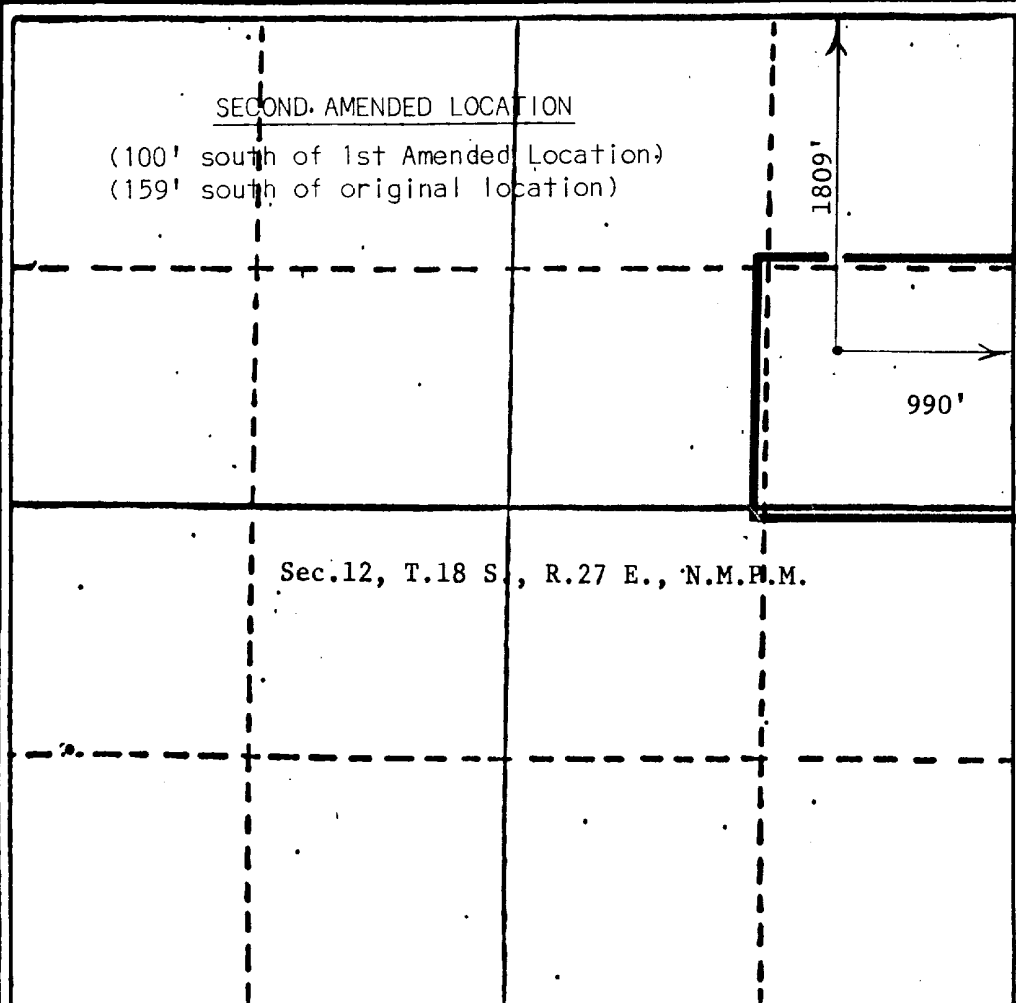
| | | | | |
|--|------------------------------------|--|-------------------------|----------------|
| Operator Collier Energy, Inc. | | Lease Crossfire Federal | | Well No. #1 |
| Unit Letter H | Section 12 | Township 18 South | Range 27 East | County Eddy |
| Actual Postage Location of Well 1809 feet from the North line and 990 feet from the East line | | | | |
| Ground Level Elev. 3604 | Producing Formation Q - Gb - SA | Pool Artesia <i>H-G-SH</i> Oil Pool | Dedicated Acreage 40 | |

1. Outline the acreage dedicated to the subject well by colored pencil or hatchure marks on the plat below.
2. If more than one lease is dedicated to the well, outline each and identify the ownership thereof (both as to working interest and royalty).
3. If more than one lease of different ownership is dedicated to the well, have the interests of all owners been consolidated by communitization, unitization, force-pooling, etc?

☐ Yes ☐ No If answer is "yes," type of consolidation _____

If answer is "no," list the owners and tract descriptions which have actually been consolidated. (Use reverse side of this form if necessary.) _____

No allowable will be assigned to the well until all interests have been consolidated (by communitization, unitization, forced-pooling, or otherwise) or until a non-standard unit, eliminating such interests, has been approved by the Division.



CERTIFICATION

I hereby certify that the information contained herein is true and complete to the best of my knowledge and belief.

James A. Knauf
Name
James A. Knauf

Position
Agent

Company
COLLIER ENERGY, INC.

Date
October 22, 1984

I hereby certify that the well location shown on this plat was plotted from field notes of actual surveys made by me or under my supervision, and that the same is true and correct to the best of my knowledge and belief.

Date Surveyed
October 12, 1984

Registered Professional Engineer and/or Land Surveyor

John D. Jacques
John D. Jacques, P.E. & L.S.
Certificate No. 6290

320 640 960 1280 1600 1920 2240 2560 2880 3200 3520 3840 4160 4480 4800 5120 5440 5760 6080 6400

All distances must be from the outer boundaries of the Section.

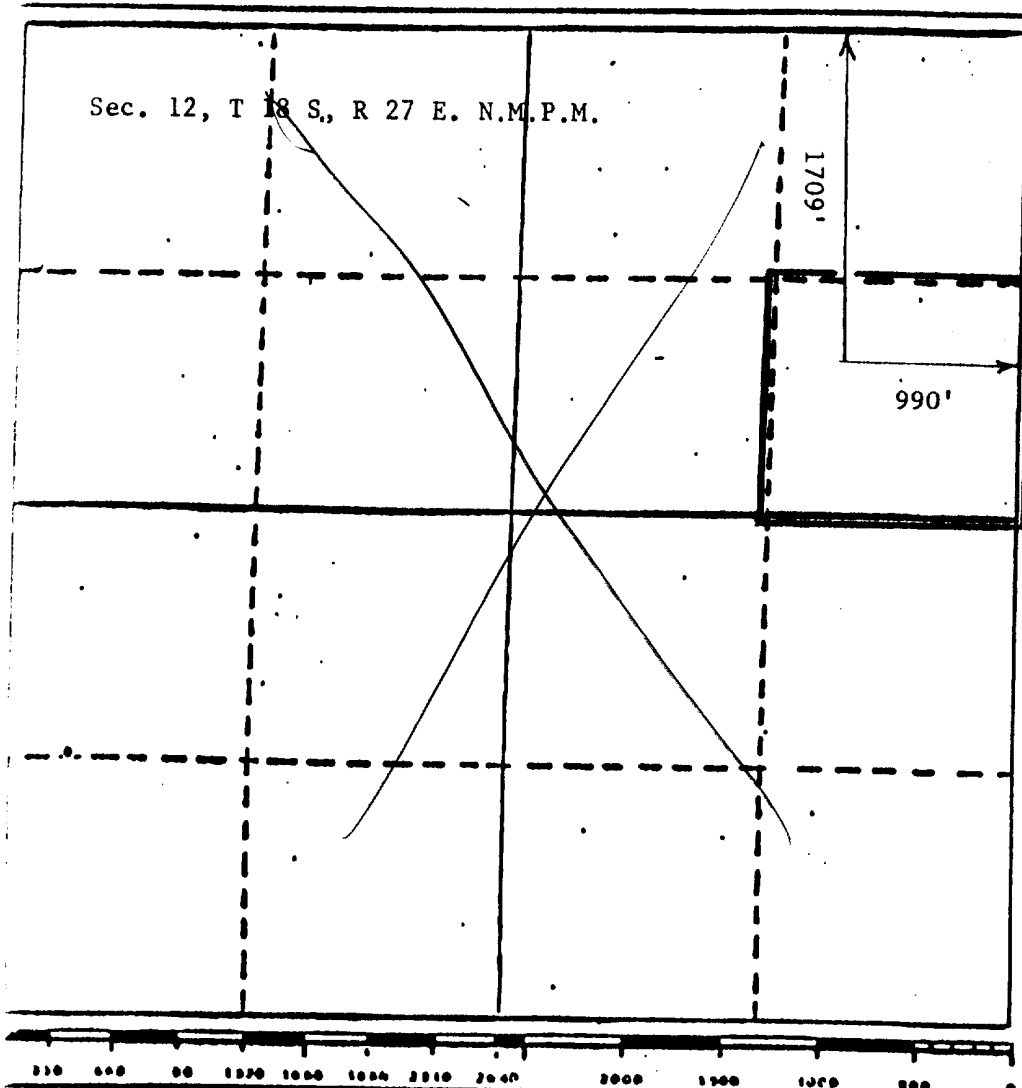
| | | | | |
|----------------------------------|------------------------------------|----------------------------|-------------------------------|-------------------|
| Operator Collier Energy, Inc. | | Lease Crossfire Federal | | Well No. #1 |
| Unit Letter H | Section 12 | Township 18 S | Range 27 E | County Eddy |
| Actual Wellbore Location of Well | | | | |
| 1709 feet from the FNL | | line and 990 | | feet from the FEL |
| Ground Level Elev. 3604' | Producing Formation Q - Gb - SA | Pool Artesia | Dedicated Acreage 40 Acres | |

1. Outline the acreage dedicated to the subject well by colored pencil or hatchure marks on the plat below.
2. If more than one lease is dedicated to the well, outline each and identify the ownership thereof (both as to working interest and royalty).
3. If more than one lease of different ownership is dedicated to the well, have the interests of all owners been consolidated by communitization, unitization, force-pooling, etc?

☐ Yes ☐ No If answer is "yes;" type of consolidation _____

If answer is "no;" list the owners and tract descriptions which have actually been consolidated. (Use reverse side of this form if necessary.) _____

No allowable will be assigned to the well until all interests have been consolidated (by communitization, unitization, forced-pooling, or otherwise) or until a non-standard unit, eliminating such interests, has been approved by the Division



CERTIFICATION

I hereby certify that the information contained herein is true and complete to the best of my knowledge and belief.

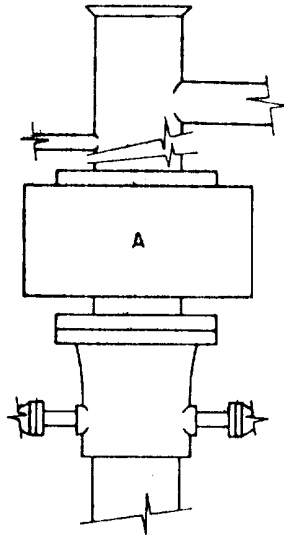
James A. Knauf
Name
James A. Knauf
Position
Agent
Company
COLLIER ENERGY, INC.
Date
October 8, 1984

I hereby certify that the well location shown on this plat was plotted from field notes of actual surveys made by me or under my supervision, and that the same is true and correct to the best of my knowledge and belief.

John D. Jaquess
JOHN D. JAQUESS
Date Surveyed
October 6, 1984
6290
Hydrographical Engineer
and/or Professional Engineer
John D. Jaquess, P.E. & L.S.
Certificate No.
6290

BLOWOUT PREVENTER ARRANGEMENT

Collier Energy, Inc.
Well #1 Crossfire Federal
SE $\frac{1}{4}$ NE $\frac{1}{4}$ Sec. 12-18S-27E



ARRANGEMENT A

SUPPLEMENTAL DRILLING DATA

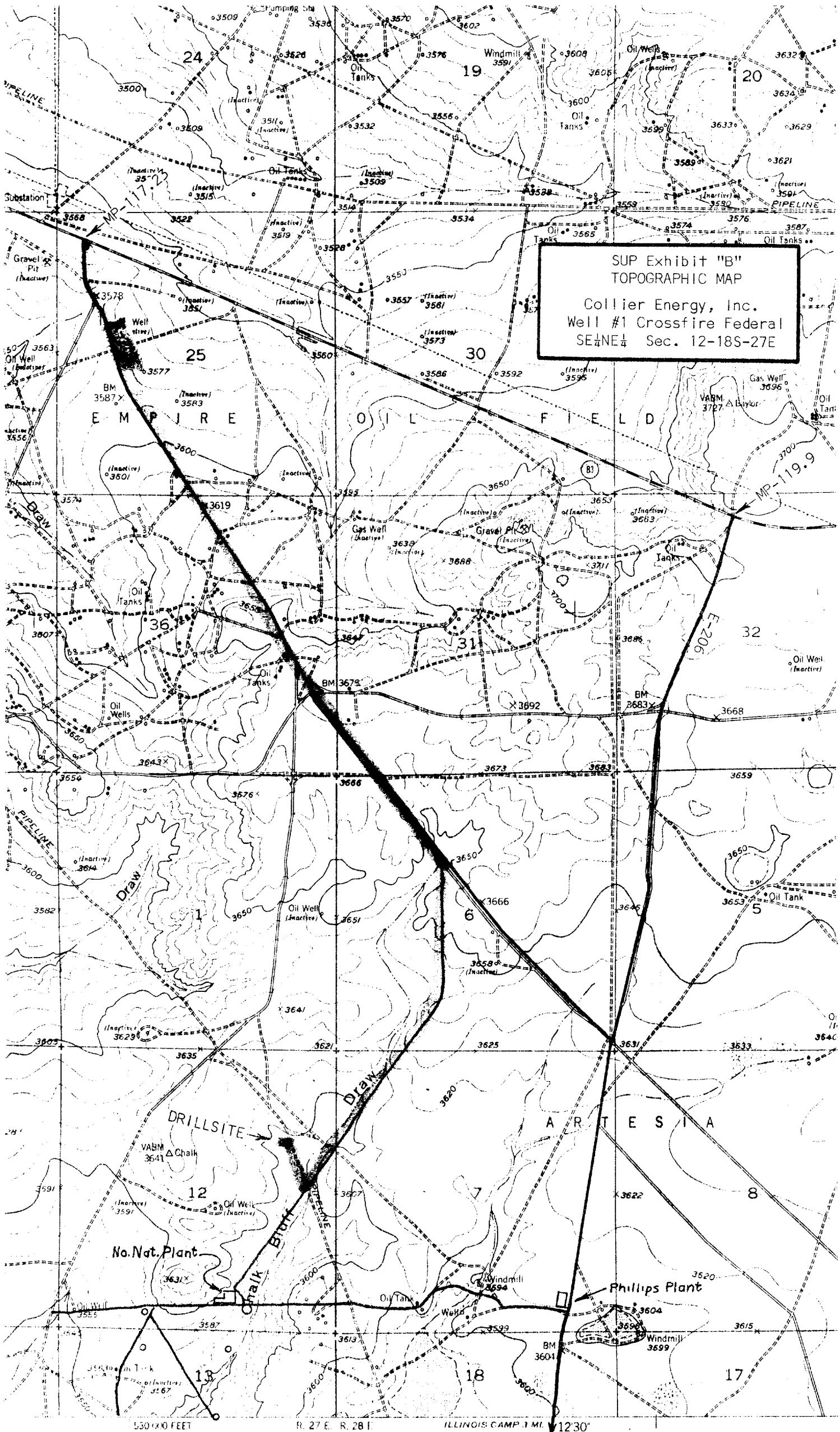
COLLIER ENERGY, INC.
WELL #1 CROSSFIRE FEDERAL
SE $\frac{1}{4}$ NE $\frac{1}{4}$ SEC. 12-18S-27E
EDDY COUNTY, NEW MEXICO

1. SURFACE FORMATION: Artesia Group of Permian Age. (Elev. 3604 feet).
2. ESTIMATED TOPS OF GEOLOGIC MARKERS:

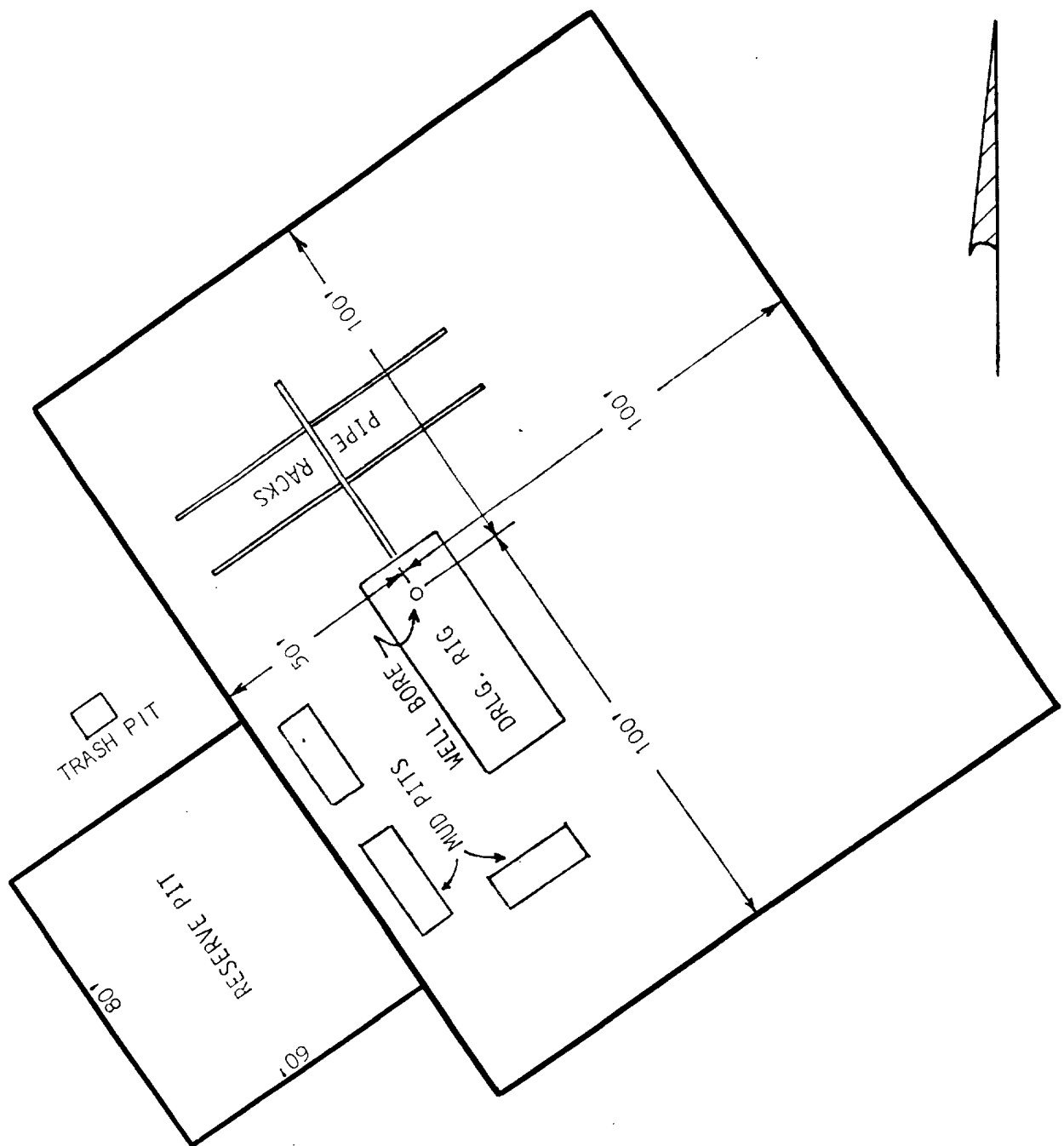
| | | | |
|--------------|-------|----------------|-------|
| Yates | 275' | Grayburg | 1650' |
| Seven Rivers | 475' | San Andres | 2050' |
| Queen | 1225' | Lovington Sand | 2200' |
3. ANTICIPATED POROSITY ZONES:

| | |
|-------|----------------|
| Water | - Above 300' |
| Oil | - 1500 - 2300' |
4. CASING DESIGN:

| <u>Size</u> | <u>Interval</u> | <u>Weight</u> | <u>Grade</u> | <u>Joint</u> |
|-------------|-----------------|---------------|--------------|--------------|
| 8 5/8" | 0 - 350' | 24.0# | K-55 | STC |
| 5 1/2" | 0 - 2600' | 14.0# | K-55 | STC |
5. SURFACE CONTROL EQUIPMENT: A double ram-type or annular BOP will be used.
6. CIRCULATING MEDIUM: Fresh water mud conditioned as necessary for control of viscosity and water loss.
7. AUXILIARY EQUIPMENT: None considered necessary on this shallow development well.
8. TESTING, LOGGING AND CORING PROGRAMS: No coring or DST's are planned. Electric logs will include a Compensated Neutron Log with Gamma Ray.
9. ABNORMAL PRESSURES, TEMPERATURES OR GASES: None anticipated.
10. ANTICIPATED STARTING DATE: It is planned that operations will commence about October 24, 1984. Duration of drilling, completion and testing operations should be one to five weeks.



SUP Exhibit "B"
TOPOGRAPHIC MAP
Collier Energy, Inc.
Well #1 Crossfire Federal
SE¼NE¼ Sec. 12-18S-27E



SUP Exhibit "D"
 SKETCH OF WELL PAD
 Collier Energy, Inc.
 Well #1 Crossfire Federal
 SE $\frac{1}{4}$ NE $\frac{1}{4}$ Sec. 12-18S-27E