

**NEW MEXICO OIL CONSERVATION COMMISSION
WELL LOCATION AND ACREAGE DEDICATION PLAT**

Form C-102
Supersedes C-128
Effective 1-1-65

All distances must be from the outer boundaries of the Section.

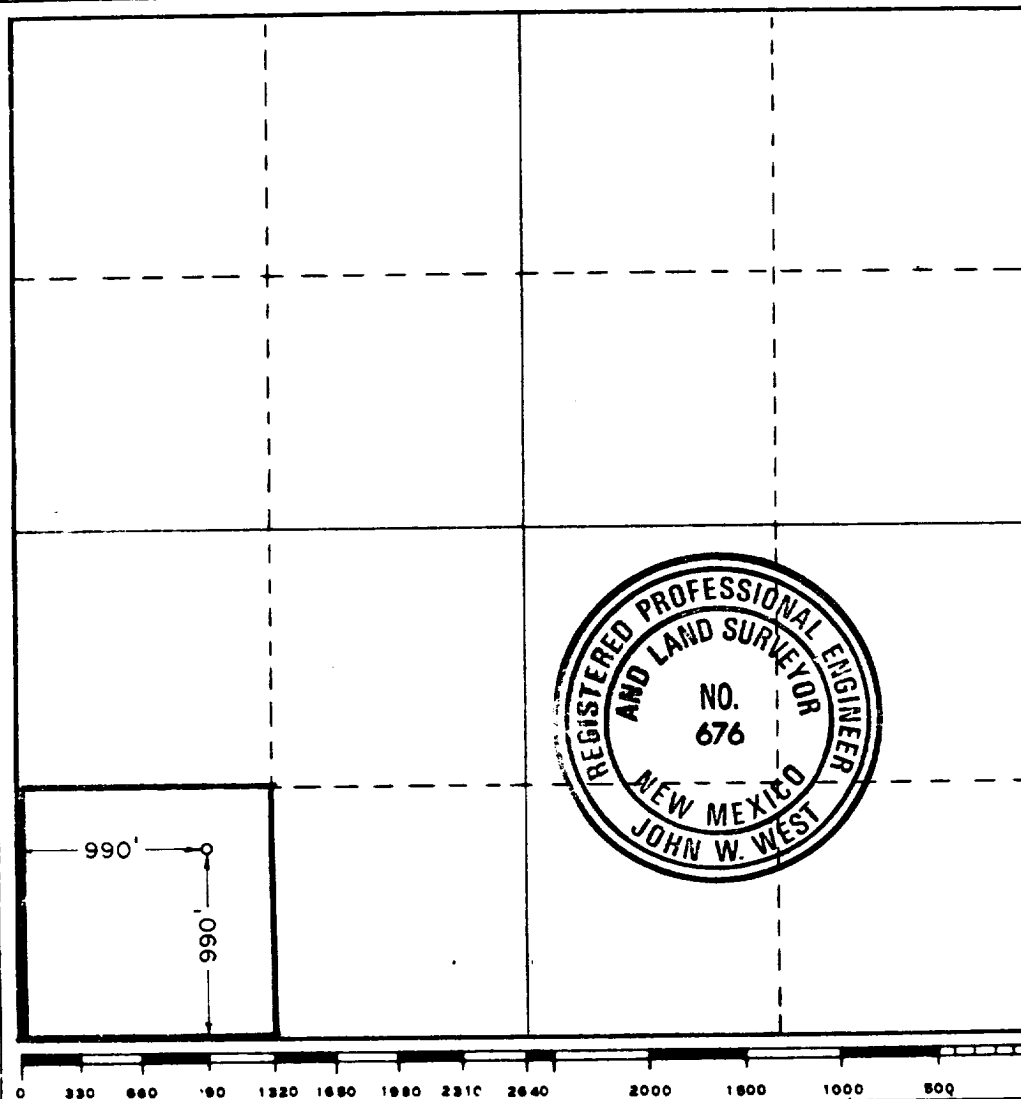
Operator Tenneco			Lease State JL 36			Well No. 6		
Unit Letter M	Section 36	Township 18 South	Range 29 East	County Eddy				
Actual Footage Location of Well: <div style="display: flex; justify-content: space-between;"> 990 feet from the south line and 990 feet from the west line </div>								
Ground Level Elev. 3438.4	Producing Formation San Andres		Pool Leo Queen So. (Grayburg)			Dedicated Acreage: 40 Acres		

1. Outline the acreage dedicated to the subject well by colored pencil or hachure marks on the plat below.
2. If more than one lease is dedicated to the well, outline each and identify the ownership thereof (both as to working interest and royalty).
3. If more than one lease of different ownership is dedicated to the well, have the interests of all owners been consolidated by communitization, unitization, force-pooling, etc?

☒ Yes ☐ No If answer is "yes," type of consolidation communitization

If answer is "no," list the owners and tract descriptions which have actually been consolidated. (Use reverse side of this form if necessary.) _____

No allowable will be assigned to the well until all interests have been consolidated (by communitization, unitization, forced-pooling, or otherwise) or until a non-standard unit, eliminating such interests, has been approved by the Commission.



CERTIFICATION

I hereby certify that the information contained herein is true and complete to the best of my knowledge and belief.

Ladell Collier
Name

Ladell Collier

Position
Geological Engineer

Company
Tenneco Oil Company

Date
November 20, 1984

I hereby certify that the well location shown on this plat was plotted from field notes of actual surveys made by me or under my supervision, and that the same is true and correct to the best of my knowledge and belief.

Date Surveyed
November 10, 1984

Registered Professional Engineer
and/or Land Surveyor

Ronald J. Eidson
Certificate No. JOHN W. WEST, 676
RONALD J. EIDSON, 3239