

RECEIVED BY

Form 9-331 C  
(May 1963)

DEC 19 1984

O. I. D.

ARTESIA OFFICE

U. S. OIL CONS. COMMISSION

UNITED STATES

DEPARTMENT OF THE INTERIOR

GEOLOGICAL SURVEY

SUBMIT IN APPLICATION\*

(Other instructions on  
reverse side)

Form approved.

Budget Bureau No. 42-R1425.

30-015-25138

5. LEASE DESIGNATION AND SERIAL NO.

LC-062029

6. IF INDIAN, ALLOTTEE OR TRIBE NAME

7. UNIT AGREEMENT NAME

8. FARM OR LEASE NAME

Roadrunner Federal

9. WELL NO.

1

10. FIELD AND POOL, OR WILDCAT

South Leo, Seven Rivers,  
Queen, Grayburg San Andres11. SEC., T., R., M., OR BLK.  
AND SURVEY OR AREA

Section 35-T18S-R29E

12. COUNTY OR PARISH

Eddy

13. STATE

N.M.

1a. TYPE OF WORK

DRILL ☒DEEPEN ☐PLUG BACK ☐

b. TYPE OF WELL

OIL  
WELL ☒GAS  
WELL ☐

OTHER

SINGLE  
ZONE ☐MULTIPLE  
ZONE ☐

2. NAME OF OPERATOR

MYCO INDUSTRIES, INC. ✓

3. ADDRESS OF OPERATOR

207 South 4th Street, Artesia, New Mexico 88210

4. LOCATION OF WELL (Report location clearly and in accordance with any State requirements.)\*

At surface

1980' FSL and 1980' FEL

At proposed prod. zone

same

14. DISTANCE IN MILES AND DIRECTION FROM NEAREST TOWN OR POST OFFICE\*

Approximately 25 miles ESE of Artesia, New Mexico

15. DISTANCE FROM PROPOSED\*

LOCATION TO NEAREST  
PROPERTY OR LEASE LINE, FT.  
(Also to nearest drlg. unit line, if any)

1980'

16. NO. OF ACRES IN LEASE

812.67

17. NO. OF ACRES ASSIGNED  
TO THIS WELL

40

18. DISTANCE FROM PROPOSED LOCATION\*

TO NEAREST WELL, DRILLING, COMPLETED,  
OR APPLIED FOR, ON THIS LEASE, FT.

19. PROPOSED DEPTH

3800'

20. ROTARY OR CABLE TOOLS

Rotary

21. ELEVATIONS (Show whether DF, RT, GR, etc.)

3412' GL

22. APPROX. DATE WORK WILL START\*

ASAP.

23. PROPOSED CASING AND CEMENTING PROGRAM

per telegram w/ Al Springer  
12/10/84 JWD

| SIZE OF HOLE | SIZE OF CASING | WEIGHT PER FOOT | SETTING DEPTH        | QUANTITY OF CEMENT |
|--------------|----------------|-----------------|----------------------|--------------------|
| 12 1/4"      | 8 5/8"         | 23-24# K-55     | <del>375'</del> 375' | 300 sx circulated  |
| 7 7/8"       | 5 1/2"         | 15.5# K-55      | 3800'                | 450 sx             |

Propose to drill a San Andres test. Approximately 375' of 8 5/8" casing will be run and cemented to the surface to shut off gravel and caving. A tapered oil string will be run and cemented, perforated and sand frac'd for production.

MUD PROGRAM: FW, Gel, & LCM to 375'; Brine to TD.

BOP PROGRAM: BOP's will be installed on the 8 5/8" casing and tested.

IN ABOVE SPACE DESCRIBE PROPOSED PROGRAM: If proposal is to deepen or plug back, give data on present productive zone and proposed new productive zone. If proposal is to drill or deepen directionally, give pertinent data on subsurface locations and measured and true vertical depths. Give blowout preventer program, if any.

24.

SIGNED

Cy Cowan

TITLE

Regulatory Agent

DATE

12/6/84

(This space for Federal or State office use)

PERMIT NO.

APPROVAL DATE

APPROVED BY

San Wood

TITLE

AREA MANAGER  
CARLSBAD REGION

DATE

12-19-84

CONDITIONS OF APPROVAL, IF ANY:

APPROVAL SUBJECT TO  
GENERAL REQUIREMENTS AND  
SPECIAL STIPULATIONS  
ATTACHED

NEW MEXICO OIL CONSERVATION COMMISSION  
WELL LOCATION AND ACREAGE DEDICATION PLAT

Form C-102  
Supersedes C-128  
Effective 1-1-65

All distances must be from the outer boundaries of the Section.

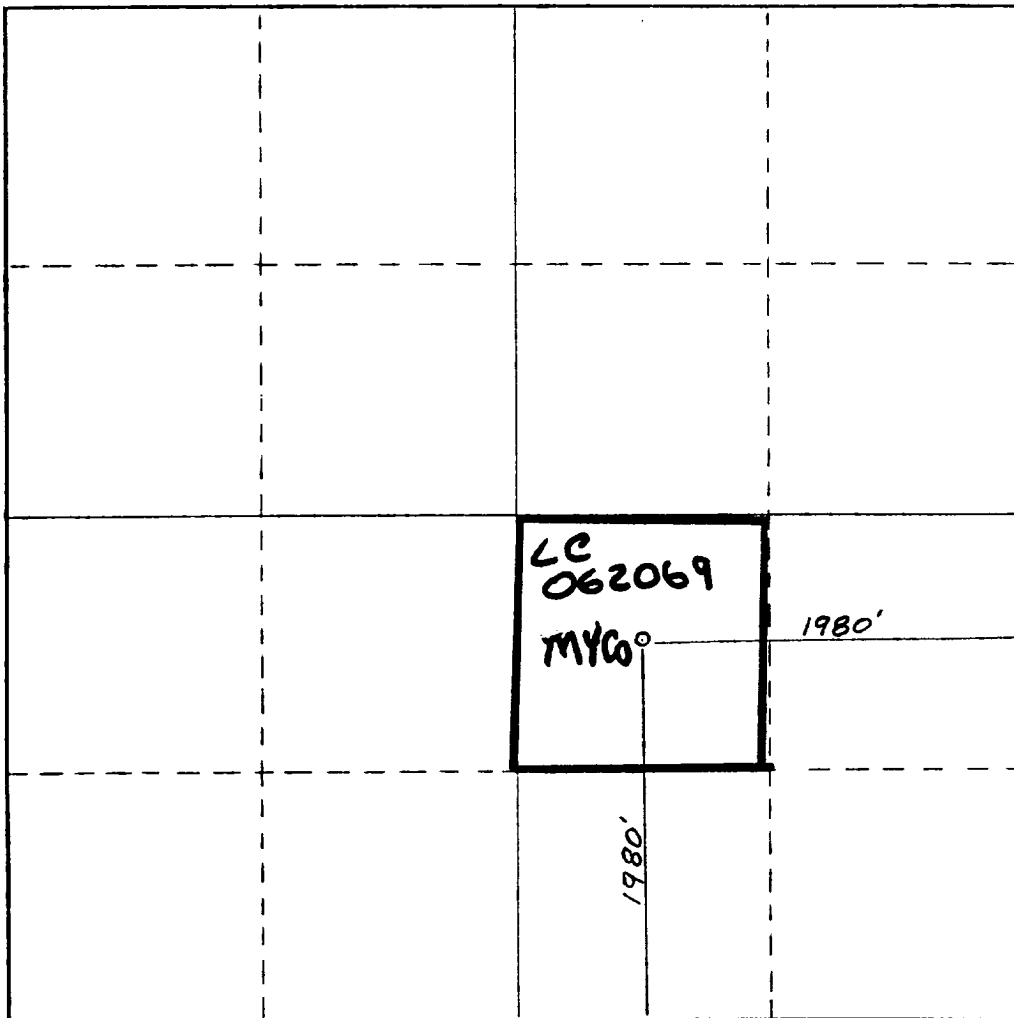
|  |  |                             |  |                       |                                       |
|--|--|-----------------------------|--|-----------------------|---------------------------------------|
| Operator<br><b>MYCO INDUSTRIES INC.</b>  |  |                             | Lease<br><b>Roadrunner Federal</b>                                 |                       | Well No.<br><b>1</b>                  |
| Unit Letter<br><b>J</b>  | Section<br><b>35</b>                     | Township<br><b>18 South</b> | Range<br><b>29 East</b>  | County<br><b>Eddy</b> |                                       |
| Actual Footage Location of Well:<br><b>1980</b> feet from the <b>South</b> line and <b>1980</b> feet from the <b>East</b> line |  |                             |  |                       |                                       |
| Ground Level Elev.<br><b>3412.</b>   | Producing Formation<br><b>SAN ANDRES</b> |                             | Pool<br><b>South Leo, Seven Rivers, Queen, Grayburg San Andres</b> |                       | Dedicated Acreage:<br><b>40</b> Acres |

1. Outline the acreage dedicated to the subject well by colored pencil or hachure marks on the plat below.
2. If more than one lease is dedicated to the well, outline each and identify the ownership thereof (both as to working interest and royalty).
3. If more than one lease of different ownership is dedicated to the well, have the interests of all owners been consolidated by communitization, unitization, force-pooling, etc?

☐ Yes ☒ No If answer is "yes," type of consolidation \_\_\_\_\_

If answer is "no," list the owners and tract descriptions which have actually been consolidated. (Use reverse side of this form if necessary.) \_\_\_\_\_

No allowable will be assigned to the well until all interests have been consolidated (by communitization, unitization, forced-pooling, or otherwise) or until a non-standard unit, eliminating such interests, has been approved by the Commission.



CERTIFICATION

I hereby certify that the information contained herein is true and complete to the best of my knowledge and belief.

*Cy Cowan*  
Name  
Cy Cowan  
Position  
Regulatory Agent  
Company  
Myco Industries, Inc.  
Date  
12/6/84

*DAN R. REDDY*  
I hereby certify that the well location shown on this plat was plotted from field notes of actual surveys made by me or under my supervision and that the same is true and correct to the best of my knowledge and belief.

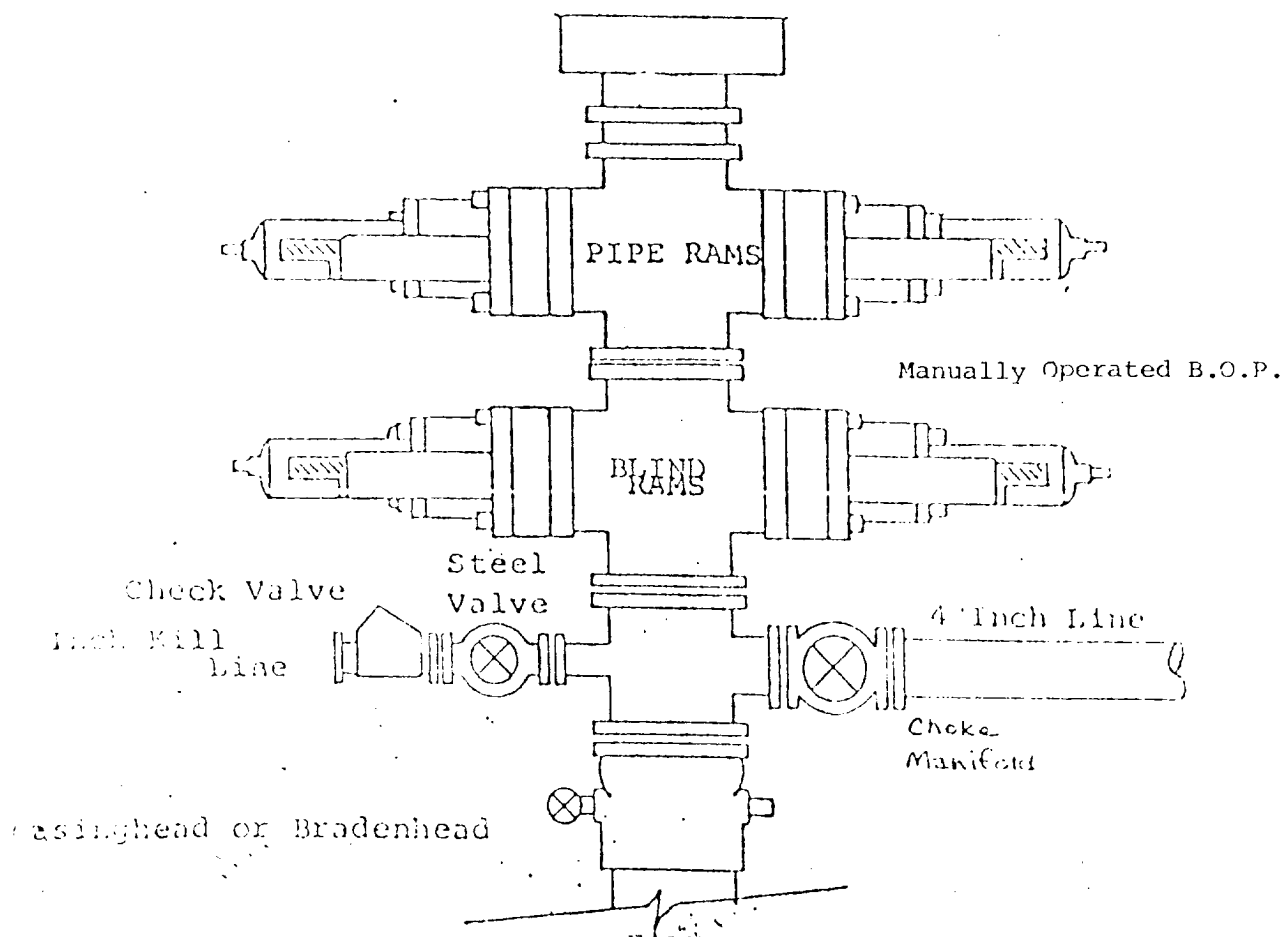
Date Surveyed  
**December 5, 1984**  
Registered Professional Engineer and/or Land Surveyor

*Dan R. Reddy*  
Certificate No.  
**NM PE&LS NO. 5412**

# EXHIBIT B

## BOP DIAGRAM

RATED 3000<sup>#</sup>



MYCO INDUSTRIES, INC.  
Roadrunner Federal #1  
1980' FSL and 1980' FEL  
Section 35-T18S-R29E  
Eddy County, New Mexico

In conjunction with Form 9-331C, Application for Permit to Drill subject well, Yates Petroleum Company submits the following ten items of pertinent information in accordance with USGS requirements.

1. The geologic surface formation is sandy alluvium.
2. The estimated tops of geologic markers are as follows:

|              |       |            |       |
|--------------|-------|------------|-------|
| Yates        | 1200' | Penrose    | 2330' |
| Seven Rivers | 1475' | Premier    | 2500' |
| Queen        | 2180' | San Andres | 2540' |
| Queen 2      | 2270' | TD         | 3800' |

3. The estimated depths at which anticipated water, oil or gas formations are expected to be encountered:

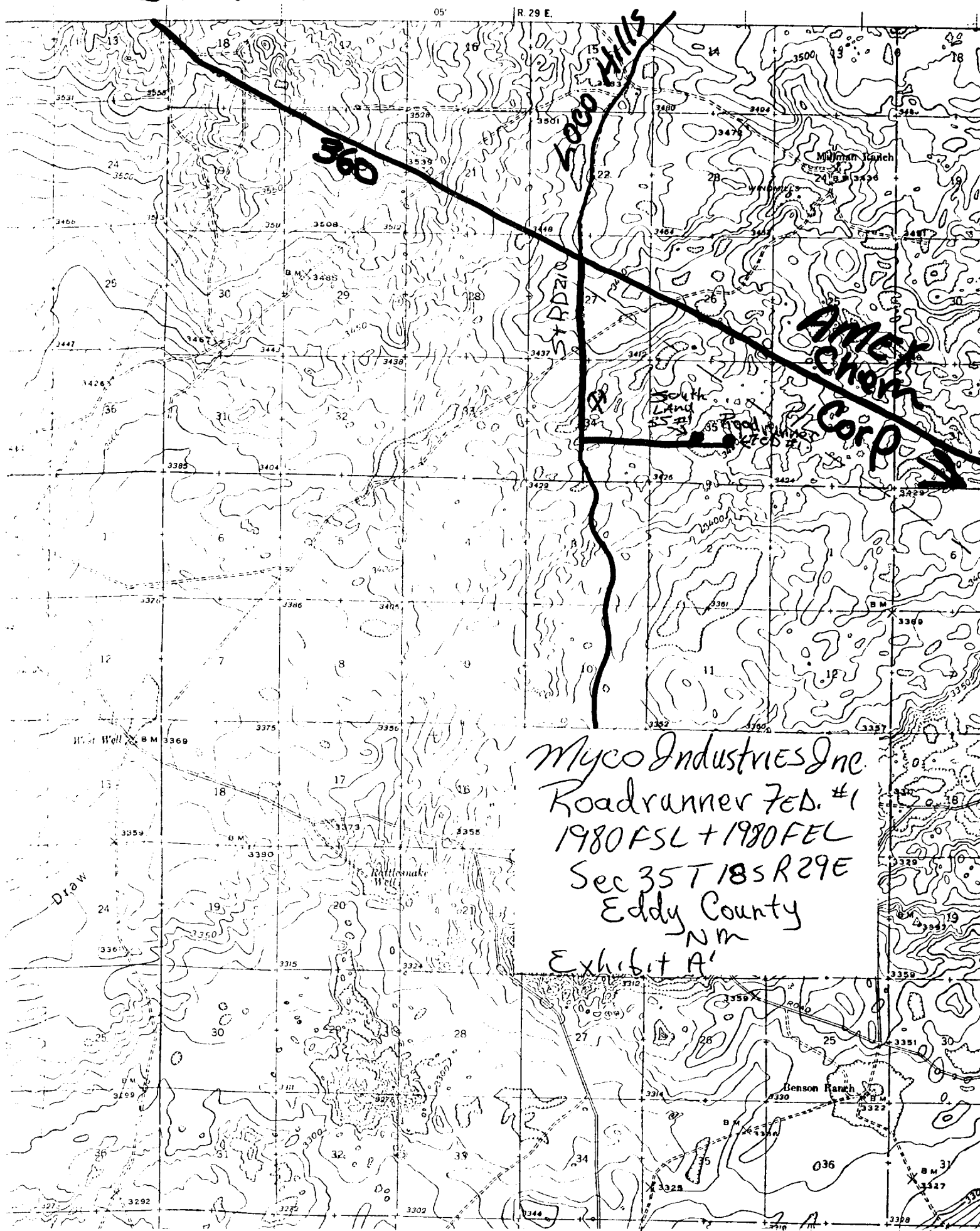
Water: Approximately 200-240'

Oil or Gas: 2560'

4. Proposed Casing Program: See Form 9-331C.
5. Pressure Control Equipment: See Form 9-331C.
6. Mud Program: See Form 9-331C.
7. Auxiliary Equipment: Kelly Cock; pit level indicators and flow sensor equipment; sub with full-opening valve on floor, drill pipe connection.
8. Testing, Logging and Coring Program:  
  
Samples: 10' samples caught out from under surface casing to TD.  
DST's: As warranted, possible in wolfcamp, Cisco, Atoka and Morrow.  
Logging: CNL/LDT TD to surface casing w/GR/CNL to surface DLL w/RxO TD to surface csg.  
Mud Logging: One man unit on out from under surface casing to TD.
9. No abnormal pressures or temperatures are anticipated.
10. Anticipated starting date: As soon as possible after approval.

Empire  
ABO Office

NEW MEXICO  
(EDDY COUNTY)  
OIL CITY QUADRA  
15-MINUTE SER



# YATES PETROLEUM CORP.

## Exhibit C

