

RECEIVED BY

Form 3160-3

DEC 19 1984

O. C. D.

NM OIL CONS. COMMISSION

Drawer DD

SUBMIT IN PLICATE

Artesia, NM 88210 Other instructions on reverse side)

38-015-25140-4
Form approved.
Budget Bureau No. 1004-0136
Expires August 31, 1985

UNITED STATES
DEPARTMENT OF THE INTERIOR
BUREAU OF LAND MANAGEMENT

APPLICATION FOR PERMIT TO DRILL, DEEPEN, OR PLUG BACK

1a. TYPE OF WORK

DRILL ☒

DEEPEN ☐

PLUG BACK ☐

b. TYPE OF WELL

OIL WELL ☒

GAS WELL ☐

OTHER ☐

SINGLE ZONE ☐

MULTIPLE ZONE ☐

2. NAME OF OPERATOR

Santa Fe Exploration Company (505-623-2733)

3. ADDRESS OF OPERATOR

P.O. Box 1136/Roswell, NM 88202

4. LOCATION OF WELL (Report location clearly and in accordance with any State requirements.)

At surface 990' FEL & 330' FSL

At proposed prod. zone
same

5. DISTANCE IN MILES AND DIRECTION FROM NEAREST TOWN OR POST OFFICE*

21 air miles east-southeast of Artesia, NM

6. DISTANCE FROM PROPOSED*

LOCATION TO NEAREST

PROPERTY OR LEASE LINE, FT.

(Also to nearest drilg. unit line, if any)

330'

7. DISTANCE FROM PROPOSED LOCATION*

TO NEAREST WELL, DRILLING, COMPLETED,

OR APPLIED FOR, ON THIS LEASE, FT.

3763'

16. NO. OF ACRES IN LEASE

353.66

19. PROPOSED DEPTH

3500'

17. NO. OF ACRES ASSIGNED

TO THIS WELL

38.31

20. ROTARY OR CABLE TOOLS

Rotary

22. APPROX. DATE WORK WILL START*

December 15, 1984

PROPOSED CASING AND CEMENTING PROGRAM

SIZE OF HOLE	SIZE OF CASING	WEIGHT PER FOOT	SETTING DEPTH	QUANTITY OF CEMENT
12-1/4"	8-5/8"	24#	350'	Circulate
7-7/8"	5-1/2"	14#	3500'	Sufficient to tie to base of salt at approx 1100' 980'



8. ABOVE SPACE DESCRIBE PROPOSED PROGRAM: If proposal is to deepen or plug back, give data on present productive zone and proposed new productive zone. If proposal is to drill or deepen directionally, give pertinent data on subsurface locations and measured and true vertical depths. Give blowout preventer program, if any.

SIGNED

Steve L. Simmons

TITLE Steve L. Simmons/Agent

DATE 12/3/84

(This space for Federal or State office use)

PERMIT NO.

APPROVAL DATE

APPROVED BY

Don Wood

TITLE

Carl
AREA MANAGER
CARLSBAD REGION

DATE

12-18-84

CONDITIONS OF APPROVAL, IF ANY:

APPROVAL SUBJECT TO
GENERAL REQUIREMENTS AND
SPECIAL STIPULATIONS

*See Instructions On Reverse Side

Title 18 U.S.C. Section 1001, makes it a crime for any person knowingly and willfully to make to any department or agency of the United States any false, fictitious or fraudulent statements or representations as to any matter within its jurisdiction.

From File 38.31

NEW MEXICO OIL CONSERVATION COMMISSION
WELL LOCATION AND ACREAGE DEDICATION PLAT

Form C-102
Supersedes C-128
Effective 1-1-65

All distances must be from the outer boundaries of the Section.

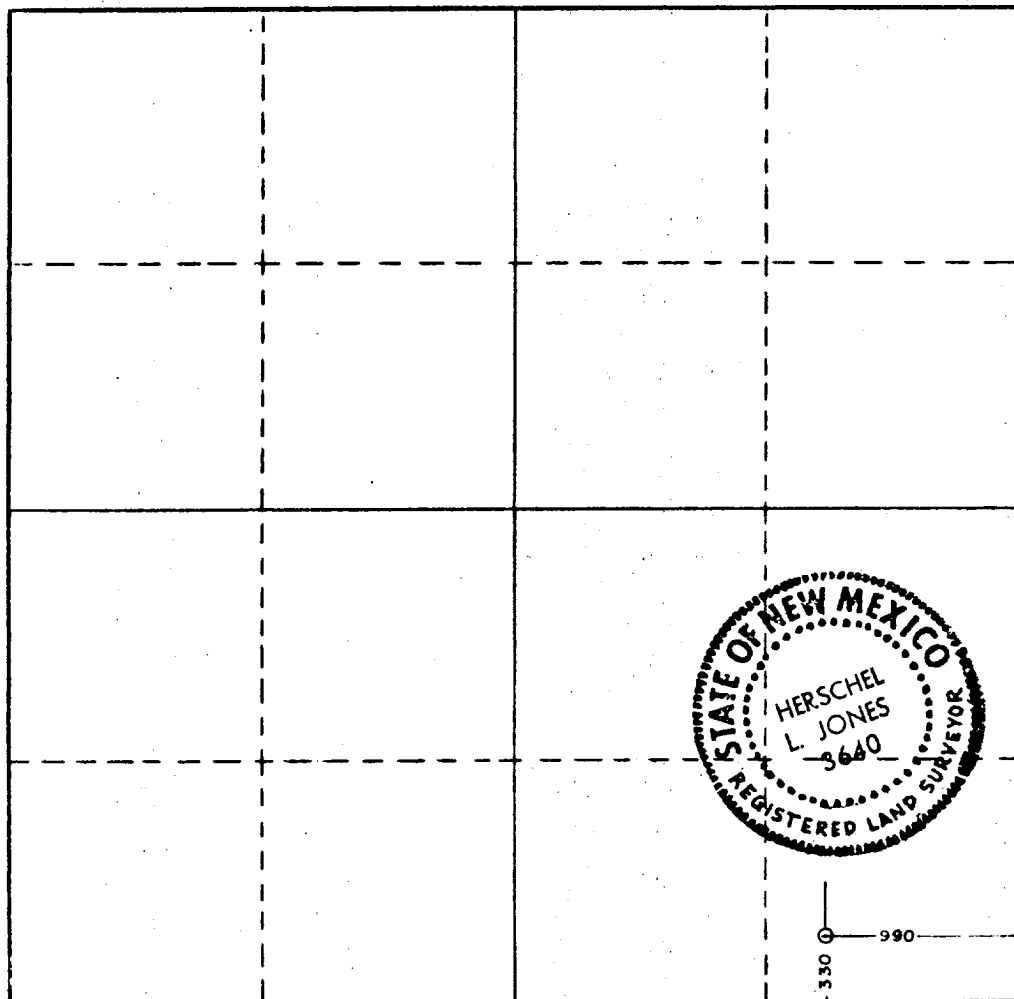
Operator SANTA FE EXPLORATION COMPANY		Lease MOUNTAIN STATES FEDERAL		Well No. 1
Unit Letter "P"	Section 35	Township 18 South	Range 29 East	County Eddy
Actual Footage Location of Wells: 330 feet from the South line and 990 feet from the East line				
Ground Level Elev. 3423.8	Producing Formation San Andres	Pool Turkey Track, SR, Q,G,SA	Dedicated Acreage: 38.31 Acres	

1. Outline the acreage dedicated to the subject well by colored pencil or hatchure marks on the plat below.
2. If more than one lease is dedicated to the well, outline each and identify the ownership thereof (both as to working interest and royalty).
3. If more than one lease of different ownership is dedicated to the well, have the interests of all owners been consolidated by communitization, unitization, force-pooling, etc?

☐ Yes ☒ No If answer is "yes," type of consolidation _____

If answer is "no," list the owners and tract descriptions which have actually been consolidated. (Use reverse side of this form if necessary.) _____

No allowable will be assigned to the well until all interests have been consolidated (by communitization, unitization, forced-pooling, or otherwise) or until a non-standard unit, eliminating such interests, has been approved by the Commission.



CERTIFICATION

I hereby certify that the information contained herein is true and complete to the best of my knowledge and belief.

Steve L. Simmons

Name

Agent

Position

Santa Fe Exploration Company

Company

November 27, 1984

Date

Steve L. Simmons

I hereby certify that the well location shown on this plat was plotted from field notes of actual surveys made by me or under my supervision, and that the same is true and correct to the best of my knowledge and belief.

Date Surveyed

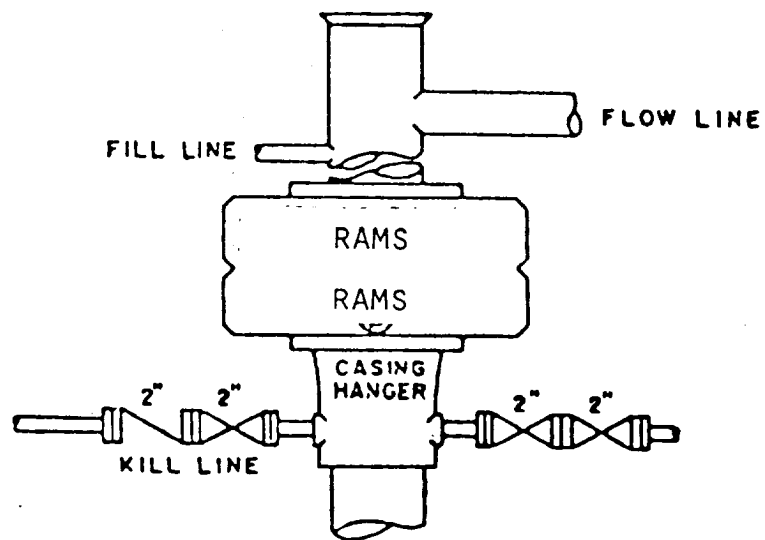
November 13, 1984

Registered Professional Engineer
and/or Land Surveyor

Herschel L. Jones

Certificate No.

3640



BOP STACK

BOP ARRANGEMENT

DESIGNATION OF OPERATOR

The undersigned is, on the records of the Bureau of Land Management, holder of lease

DISTRICT LAND OFFICE:

SERIAL NO.:

and hereby designates

NAME: Santa Fe Exploration Company
P.O. Box 1136
ADDRESS: Roswell, New Mexico 88201

as his operator and local agent, with full authority to act in his behalf in complying with the terms of the lease and regulations applicable thereto and on whom the supervisor or his representative may serve written or oral instructions in securing compliance with the Operating Regulations with respect to (describe acreage to which this designation is applicable):

Township 18 South, Range 29 East, N.M.P.M.
Section 35: Lot 1 (SE/4 SE/4)
Eddy County, New Mexico

Limited in depth to the base of the San Andres formation or 100'
below depth drilled, whichever is the greater.

It is understood that this designation of operator does not relieve the lessee of responsibility for compliance with the terms of the lease and the Operating Regulations. It is also understood that this designation of operator does not constitute an assignment of any interest in the lease.

In case of default on the part of the designated operator, the lessee will make full and prompt compliance with all regulations, lease terms, or orders of the Secretary of the Interior or his representative.

The lessee agrees promptly to notify the supervisor of any change in the designated operator.

FEATHERSTONE FARMS, LTD.

BY: _____

(Signature of lessee)

Olen F. Featherstone II, General Partner
1717 West Second
Roswell, NM 88201

(Address)

11/13/84

(Date)

SUPPLEMENTAL DRILLING DATA

SANTA FE EXPLORATION COMPANY
WELL #1 MOUNTAIN STATES FEDERAL
330' FSL & 990' FEL, Sec 35 - 18S 29E
EDDY COUNTY, NEW MEXICO

1. SURFACE FORMATION: Quaternary.

2. ESTIMATED TOPS OF GEOLOGICAL MARKERS (Ground Elevation - 3423'):

Salt	500'	Queen	2200'
Base Salt	1100'	Grayburg	2550'
Yates	1500'	San Andres	3000'
Seven Rivers	1650'		

3. ANTICIPATED POROSITY ZONES:

Water	-	above 300'	Oil	-	Grayburg
Oil	-	Yates	Oil	-	San Andres
Oil	-	Seven Rivers			
Oil	-	Queen			

4. CASING DESIGN:

<u>Size</u>	<u>Interval</u>	<u>Weight</u>	<u>Grade</u>	<u>Joint</u>
8-5/8"	0 - 350'	24#	J-55	STC
5-1/2"	0 - 3500'	14#	J-55	STC

5. PRESSURE CONTROL EQUIPMENT: An annular-type preventor or two ram-type preventors will be used.

6. CIRCULATING MEDIUM:

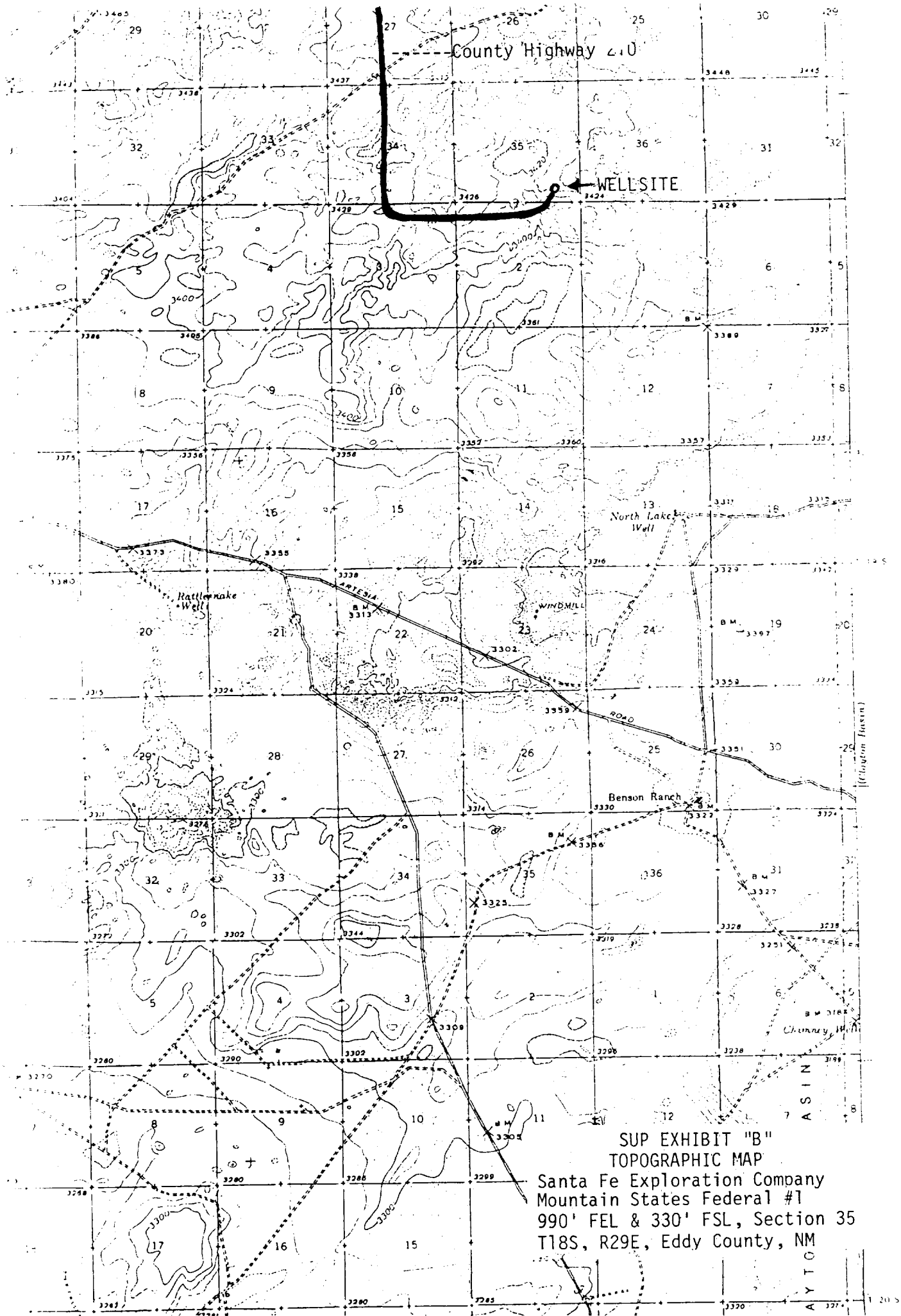
0 - 350'	Fresh water with gel added if needed for viscosity.
350 - 3500'	Salt water conditioned as necessary for control of viscosity and water loss.

7. AUXILIARY EQUIPMENT: Drill string safety valve.

8. TESTING, LOGGING AND CORING PROGRAMS: No coring or DST's are planned. Electric logs will include a DLL and some type of porosity log.

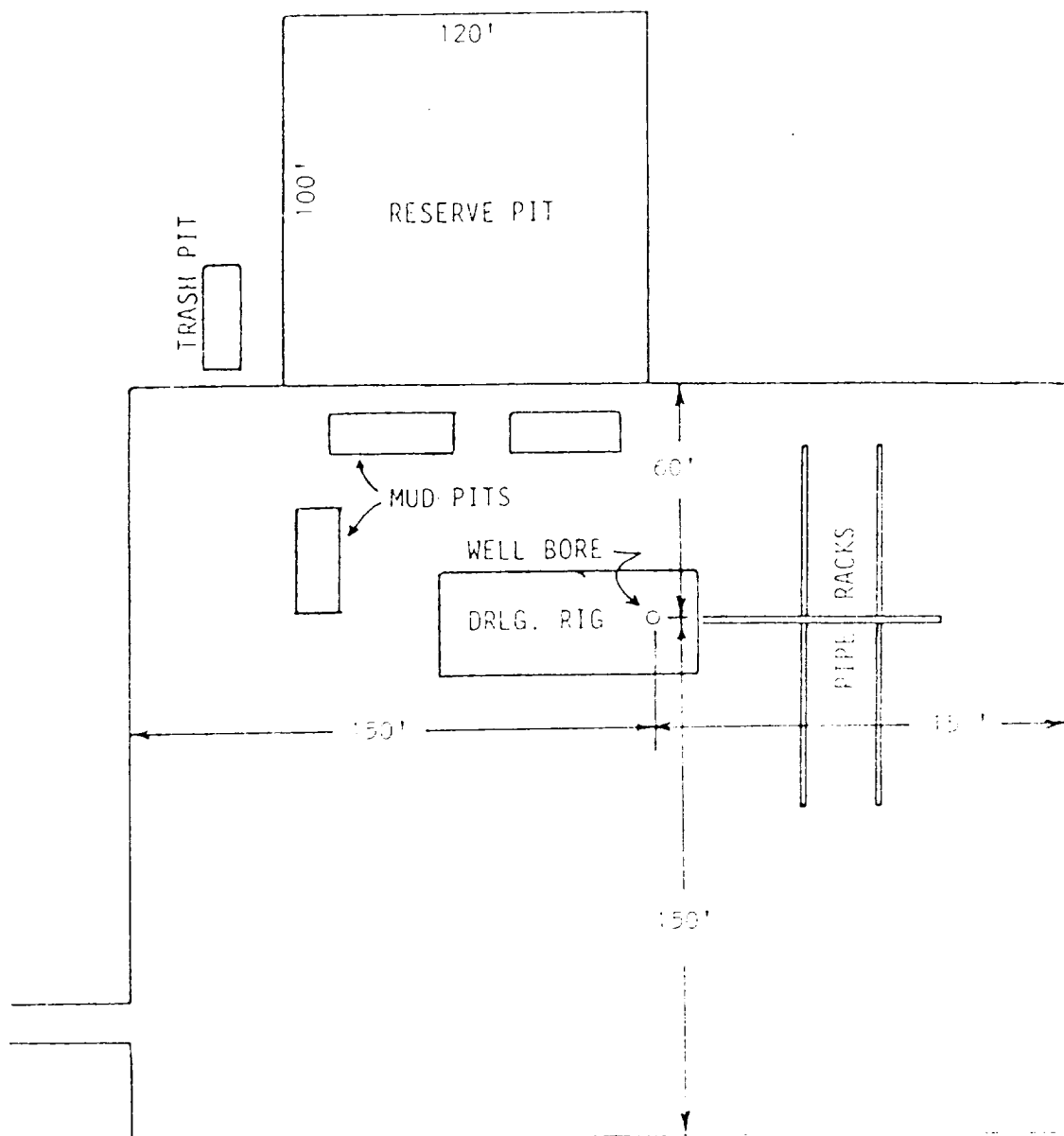
9. ABNORMAL PRESSURES, TEMPERATURES OR GAS: None anticipated.

10. ANTICIPATED STARTING DATE: It is planned that drilling operations will commence about December 10, 1984. Duration of drilling and completion operations should be six weeks.



SUP EXHIBIT "B"
TOPOGRAPHIC MAP

Santa Fe Exploration Company
Mountain States Federal #1
990' FEL & 330' FSL, Section 35
T18S, R29E, Eddy County, NM



SUP EXHIBIT "D"
 SKETCH OF WELL PAD
 Santa Fe Exploration Company
 #1 Mountain States Federal
 990' FEL & 330' FSL
 Sec 35-T18S-R29E-Eddy Co., NM