

Form 8531 (May 1963)

SUBMIT IN TRIPL. RE\*  
(Other instructions on  
reverse side)Form approved.  
Budget Bureau No. 42-R1425.

c/sf

UNITED STATES  
DEPARTMENT OF THE INTERIOR  
GEOLOGICAL SURVEY

**APPLICATION FOR PERMIT TO DRILL, DEEPEN, OR PLUG BACK**

1a. TYPE OF WORK

DRILL ☒DEEPEN ☐PLUG BACK ☐

b. TYPE OF WELL

OIL  
WELL ☒GAS  
WELL ☐OTHER ☐SINGLE  
ZONE ☐MULTIPLE  
ZONE ☐

2. NAME OF OPERATOR

Premier Production Company

3. ADDRESS OF OPERATOR

324 West Main, Artesia, NM

4. LOCATION OF WELL (Report location clearly and in accordance with any State requirements.)\*

At surface

330' FSL, 2310' FWL

At proposed prod. zone

14. DISTANCE IN MILES AND DIRECTION FROM NEAREST TOWN OR POST OFFICE\*

Approximately 8 1/2 miles SW of loco Hills, NM

15. DISTANCE FROM PROPOSED\*

LOCATION TO NEAREST  
PROPERTY OR LEASE LINE, FT.  
(Also to nearest drlg. unit line, if any)

330'

16. NO. OF ACRES IN LEASE

440

17. NO. OF ACRES ASSIGNED

40

18. DISTANCE FROM PROPOSED LOCATION\*

TO NEAREST WELL, DRILLING, COMPLETED,  
OR APPLIED FOR, ON THIS LEASE, FT.

2640'

19. PROPOSED DEPTH

3500'

20. ROTARY OR CABLE TOOLS

rotary

21. ELEVATIONS (Show whether DF, RT, GR, etc.)

3418' GL

22. APPROX. DATE WORK WILL START\*

2-20-85

23.

PROPOSED CASING AND CEMENTING PROGRAM

per telecon w/ Larry Jones  
2/15/85 LWR

SIZE OF HOLE	SIZE OF CASING	WEIGHT PER FOOT	SETTING DEPTH	QUANTITY OF CEMENT
12 1/4"	8-5/8"	24#	300'	300sax circulate and/or reddimix to
7-7/8"	5 1/2"	10.5 + 15.5	3500'	1100 sax base of salt. surf.

We propose to drill & test all intermediate oil and gas formations to and thru the San Andres. We will set approximately 350' of surface casing to shut off gravel. If commercial, we will run 5 1/2" casing; cement & stimulate for production.

Mud Program: FW gel to 350'; drill out with SW gel and LCM to TD.

BOP: BOP will be installed under surface & tested daily.

IN ABOVE SPACE DESCRIBE PROPOSED PROGRAM: If proposal is to deepen or plug back, give data on present productive zone and proposed new productive zone. If proposal is to drill or deepen directionally, give pertinent data on subsurface locations and measured and true vertical depths. Give blowout preventer program, if any.

24.

SIGNED

TITLE operator

DATE 1/21/85

(This space for Federal or State office use)

PERMIT NO.

APPROVAL DATE

APPROVED BY

TITLE

DATE

CONDITIONS OF APPROVAL, IF ANY:

APPROVAL SUBJECT TO  
GENERAL REQUIREMENTS AND  
SPECIAL STIPULATIONS  
ATTACHED

NEW MEXICO OIL CONSERVATION COMMISSION  
WELL LOCATION AND ACREAGE DEDICATION PLAT

Form C-102  
Supersedes C-128  
Effective 1-1-65

All distances must be from the outer boundaries of the Section.

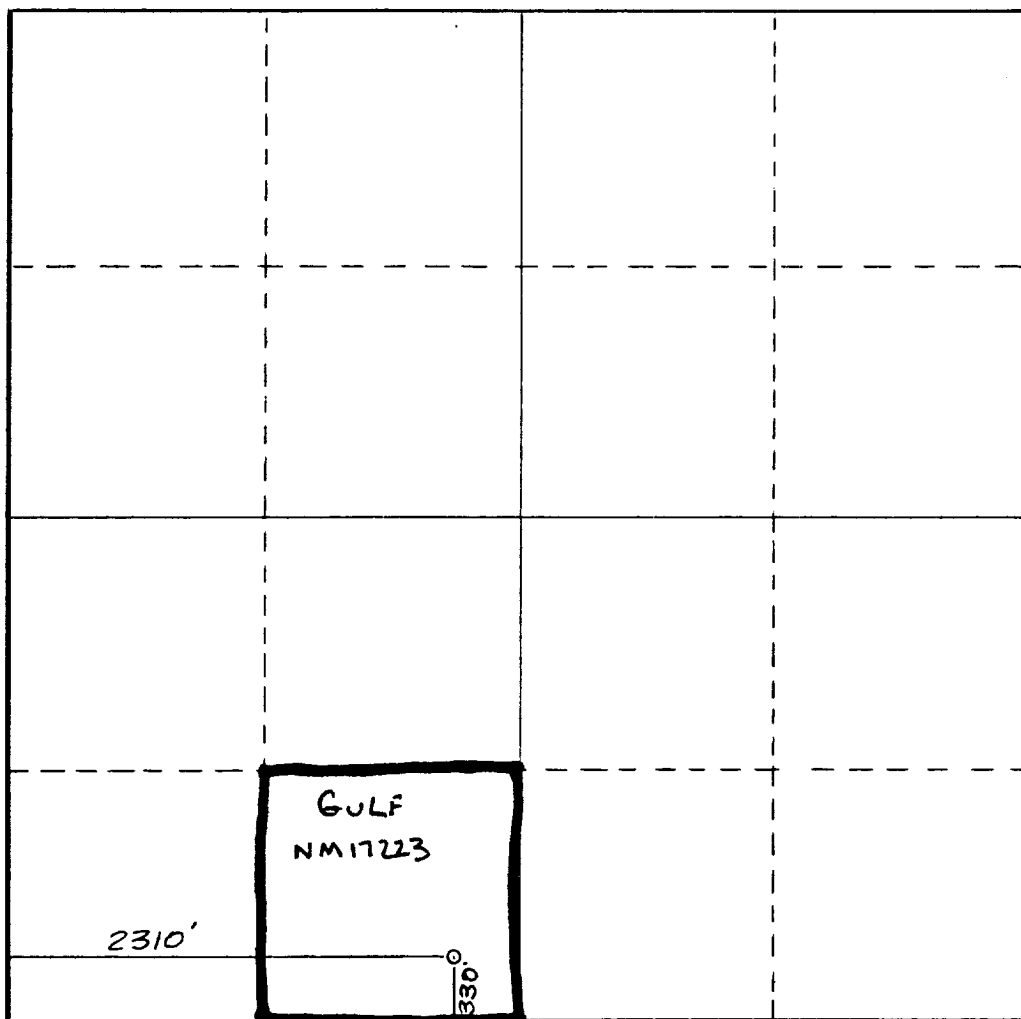
Operator <b>PREMIER PRODUCTION CO.</b>			Lease <b>Pogo Federal</b>		Well No. <b>1</b>
Unit Letter <b>N</b>	Section <b>26</b>	Township <b>18 South</b>	Range <b>29 East</b>	County <b>Eddy</b>	
Actual Footage Location of Well: <b>330</b> feet from the <b>South</b> line and <b>2310</b> feet from the <b>West</b> line					
Ground Level Elev. <b>3418.</b>	Producing Formation <b>PI</b>		Pool <b>TURKEY TRACK SR, Q, GB, SA.</b>	Dedicated Acreage: <b>40</b> Acres	

1. Outline the acreage dedicated to the subject well by colored pencil or hachure marks on the plat below.
2. If more than one lease is dedicated to the well, outline each and identify the ownership thereof (both as to working interest and royalty).
3. If more than one lease of different ownership is dedicated to the well, have the interests of all owners been consolidated by communitization, unitization, force-pooling, etc?

☒ Yes    ☒ No    If answer is "yes," type of consolidation **N/A**

If answer is "no," list the owners and tract descriptions which have actually been consolidated. (Use reverse side of this form if necessary.) \_\_\_\_\_

No allowable will be assigned to the well until all interests have been consolidated (by communitization, unitization, forced-pooling, or otherwise) or until a non-standard unit, eliminating such interests, has been approved by the Commission.



**CERTIFICATION**

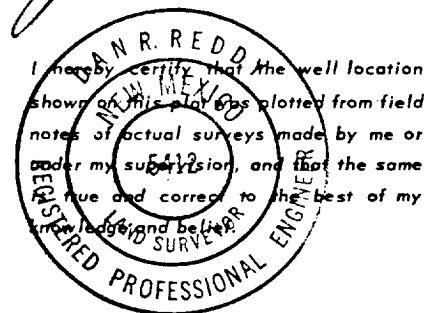
I hereby certify that the information contained herein is true and complete to the best of my knowledge and belief.

Name **LARRY JONES**

Position **OPERATOR**

Company **PREMIER PRODUCTION CO.**

Date **JAN 23, 1985**

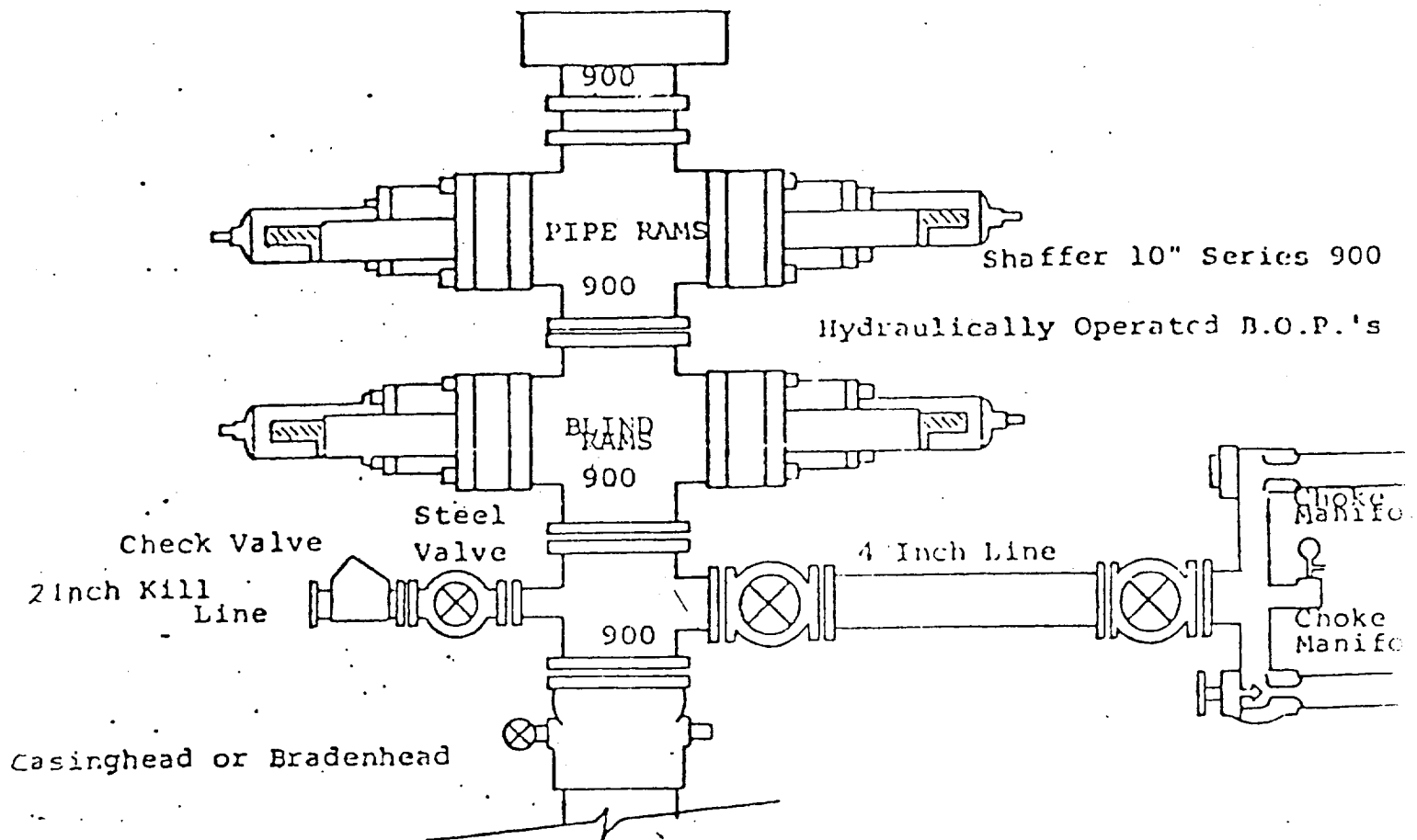


Date Surveyed  
**January 17, 1985**  
Registered Professional Engineer  
and/or Land Surveyor

**Dan R. Reddy**  
Certificate No.

**NM PE&LS NO. 5412**

# EXHIBIT B



## THE FOLLOWING CONSTITUTE MINIMUM BLOWOUT PREVENTER REQUIREMENTS

1. All preventers to be hydraulically operated with secondary manual control installed prior to drilling out from under casing.
2. Choke outlet to be a minimum of 4" diameter.
3. Kill line to be of all steel construction of 2" minimum diameter.
4. All connections from operating manifolds to preventers to be all steel. hole or tube a minimum of one inch in diameter.
5. The available closing pressure shall be at least 15% in excess of that required with sufficient volume to operate the B.O.P.'s.
6. All connections to and from preventer to have a pressure rating equivalent to that of the B.O.P.'s.
7. Inside blowout preventer to be available on rig floor.
8. Operating controls located a safe distance from the rig floor.
9. Hole must be kept filled on trips below intermediate casing. Operator not responsible for blowouts resulting from not keeping hole full.
10. D. P. float must be installed and used below zone of first gas intrusion.

Premier Production Co.

POGO FEDERAL #1  
330' FSL - 2310' FWL  
Eddy County, New Mexico

In conjunction with Form 9-331C, Application for Permit to Drill subject well, Premier Production Company submits the following ten items of pertinent information in accordance with USGS requirements:

1. The geologic surface formation is sandy alluvium.
2. The estimate tops of the geologic markers are as follows:

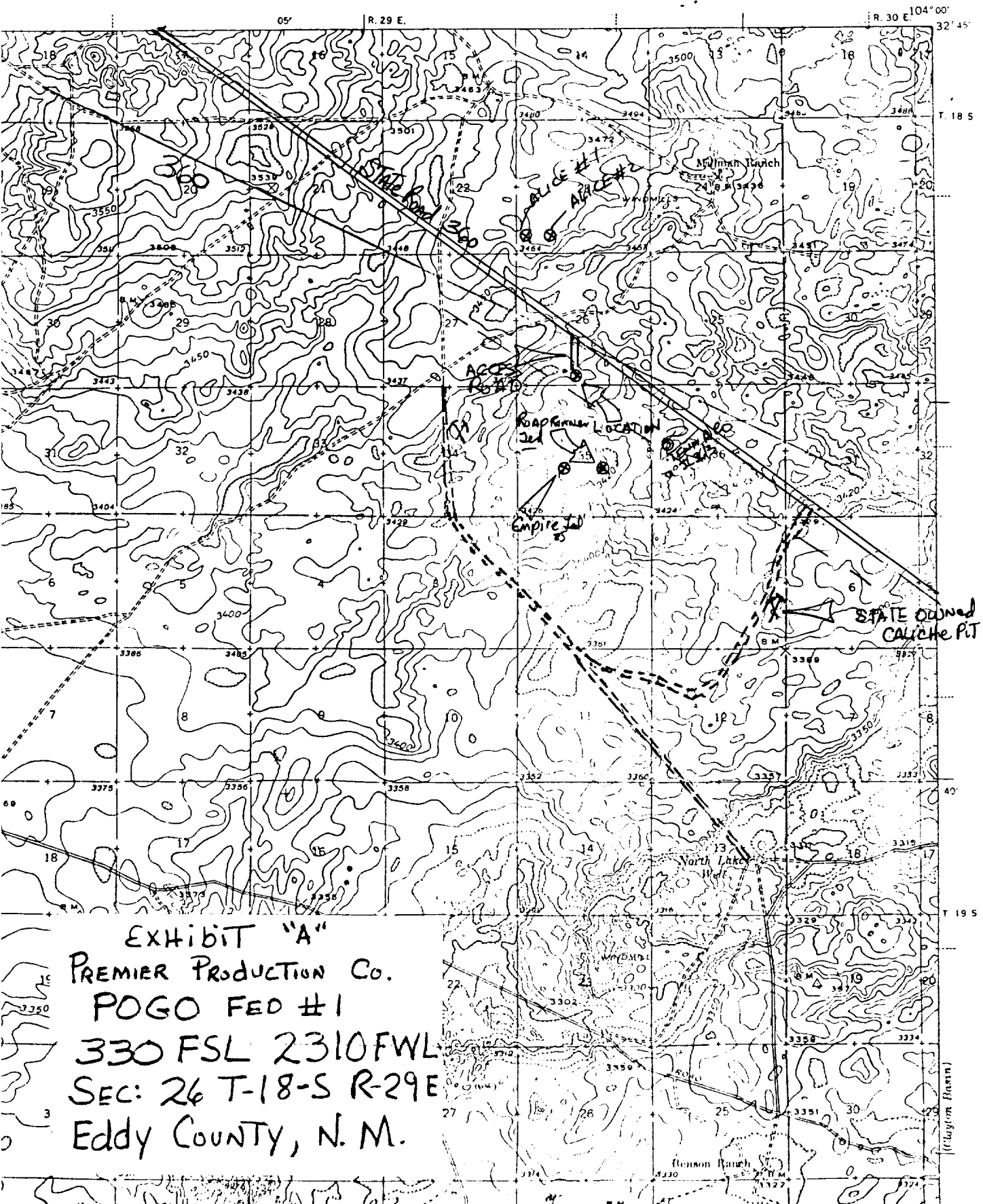
Yates	1090'
Seven Rivers	1575'
Queen	2155'
Grayburg	2505'
San Andres	2975'
TD	3500'

3. The estimated depths at which anticipated water and oil formations are expected to be encountered:

water	approximately 200' - 240'
oil	Grayburg 2350' - 2800'

4. Proposed casing program: See Form 9-331C.
5. Pressure control equipment: See Form 9-331C and Exhibit B.
6. Mud Program: See Form 9-331C.
7. Auxiliary equipment: None.
8. Testing, Logging and Coring Program:  
Samples: 10' samples caught out from under surface casing to TD.  
DST's: As warranted.
9. No abnormal pressures or temperatures are anticipated.
10. Anticipated Starting Date: As soon as possible after approval.

NEW MEXICO  
(EDDY COUNTY)  
OIL CITY QUADRANGLE  
15-MINUTE SERIES



# EXHIBIT C

