

30-015-25187 c/s

RECEIVED BY
MAY 1985

FEB 12 1985

O.C.D.

APPLICATION

DEPARTMENT OF THE INTERIOR

Artesia, N.M. 88210

UNITED STATES
DEPARTMENT OF THE INTERIOR
GEOLOGICAL SURVEY

SUBMIT IN T...
OTHER INSTRUCTIONS ON
REVERSE SIDE

Form approved.
Budget Bureau No. 42 R1425

5. LEASE DESIGNATION AND SERIAL NO.
N/M 01065
6. IF INDIAN, ALIQUOTTEE OR TRIBE NAME

1E. TYPE OF WORK

DRILL ☒

DEEPEN ☐

PLUG BACK ☐

1F. TYPE OF WELL

OIL
WELL ☒

GAS
WELL ☐

OTHER

2. NAME OF OPERATOR

Metex Pipe and Supply

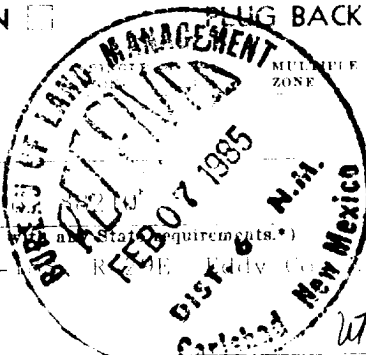
3. ADDRESS OF OPERATOR

P.O. Box 1937

Artesia, New Mexico 88210

4. LOCATION OF WELL (Report location clearly and in accordance with all State requirements.)
At surface 2410' ENE 7 330' EEL S-35, T-18S, R-29E Eddy Co., N.M.

At proposed prod. zone



7. UNIT AGREEMENT NAME

8. FARM OR LEASE NAME

Wilson Federal

9. WELL NO.

10. FIELD AND POOL, OR WILDCAT

Welded, 7 Rivers, 1st, Grb...

11. SEC., T., R., M., OR BLK.
AND SURVEY OR AREA

S-35, T-18S, R-29E

14. DISTANCE IN MILES AND DIRECTION FROM NEAREST TOWN OR POST OFFICE

9 miles S/SW Loco Hills, N.M.

15. DISTANCE FROM PROPOSED*
LOCATION TO NEAREST
PROPERTY OR LEASE LINE, FT.
(Also to nearest drlg. unit line, if any)

16. NO. OF ACRES IN LEASE

40

17. NO. OF ACRES ASSIGNED
TO THIS WELL

40

18. DISTANCE FROM PROPOSED LOCATION*
TO NEAREST WELL, DRILLING, COMPLETED,
OR APPLIED FOR, ON THIS LEASE, FT.

19. PROPOSED DEPTH

3000'

20. ROTARY OR CABLE TOOLS

Rotary

21. ELEVATIONS (Show whether DF, RT, GR, etc.)

3432.9 ft. GL

22. APPROX. DATE WORK WILL START*

April 1, 1985

23.

PROPOSED CASING AND CEMENTING PROGRAM

per telcon w/ Martin Muncy
2/5/85 JWD

SIZE OF HOLE	SIZE OF CASING	WEIGHT PER FOOT	SETTING DEPTH	QUANTITY OF CEMENT
12 1/2"	8 5/8"	24#	300'	circulate
7 7/8"	5 1/2"	17#	3500' 3000'	750 sacks

Propose to drill 12 1/2" hole to 350', set 8 5/8" casing and circulate cement. Cameron 11" BOP, 5000 lb., will be tested with rams closed and surface pipe tested prior to drilling out. Drilling mud will be Freshwater Gel with viscosity of approximately 100. Logs will be Sidewall Neutron Porosity and Dual Lateral Log Micro SFL. No testing will be done until after pipe has been cemented and well fractured. There have been no abnormal pressures, waterflows, or H₂S encountered in this area at this depth.

IN ABOVE SPACE DESCRIBE PROPOSED PROGRAM: If proposal is to deepen or plug back, give data on present productive zone and proposed new productive zone. If proposal is to drill or deepen directionally, give pertinent data on subsurface locations and measured and true vertical depths. Give blowout preventer program, if any.

24.

SIGNED

Martin B Muncy

d/b/a

TITLE

Metex Pipe and Supply

DATE

Jan. 28, 1985

(This space for Federal or State office use)

PERMIT NO.

APPROVAL DATE

APPROVED BY

Dan Wood

TITLE

DATE

2-12-85

CONDITIONS OF APPROVAL, IF ANY

*See Instructions On Reverse Side

APPROVAL SUBJECT TO
GENERAL REQUIREMENTS AND
SPECIAL STIPULATIONS
ATTACHED

Instructions

General: This form is designed for submitting proposals to perform certain well operations, as indicated, on all types of lands and leases for appropriate action by either a Federal or a State agency, or both, pursuant to applicable Federal and/or State laws and regulations. Any necessary special instructions concerning the use of this form and the number of copies to be submitted, particularly with regard to local, area, or regional procedures and practices, either are shown below or will be issued by, or may be obtained from, the local Federal and or State office.

Item 1: If the proposal is to redrill to the same reservoir at a different subsurface location or to a new reservoir, use this form with appropriate notations. Consult applicable State or Federal regulations concerning subsequent work proposals or reports on the well.

Item 4: If there are no applicable State requirements, locations on Federal or Indian land should be described in accordance with Federal requirements. Consult local State or Federal office for specific instructions.

Item 14: Needed only when location of well cannot readily be found by road from the land or lease description. A plat, or plats, separate or on this reverse side, showing the roads to, and the surveyed location of, the well, and any other required information, should be furnished when required by Federal or State agency offices.

Items 15 and 18: If well is to be, or has been directionally drilled, give distances for subsurface location of hole in any present or objective production zone.

Item 22: Consult applicable Federal or State regulations, or appropriate officials, concerning approval of the proposal before operations are started.

Estimated Tops:

Salt-----	385'
7 Rivers-----	1540'
Grayburg-----	2597'
San Andres-----	2960'

**NEW MEXICO OIL CONSERVATION COMMISSION
WELL LOCATION AND ACREAGE DEDICATION PLAT**

Form C-102
Supersedes C-128
Effective 1-1-65

All distances must be from the outer boundaries of the Section.

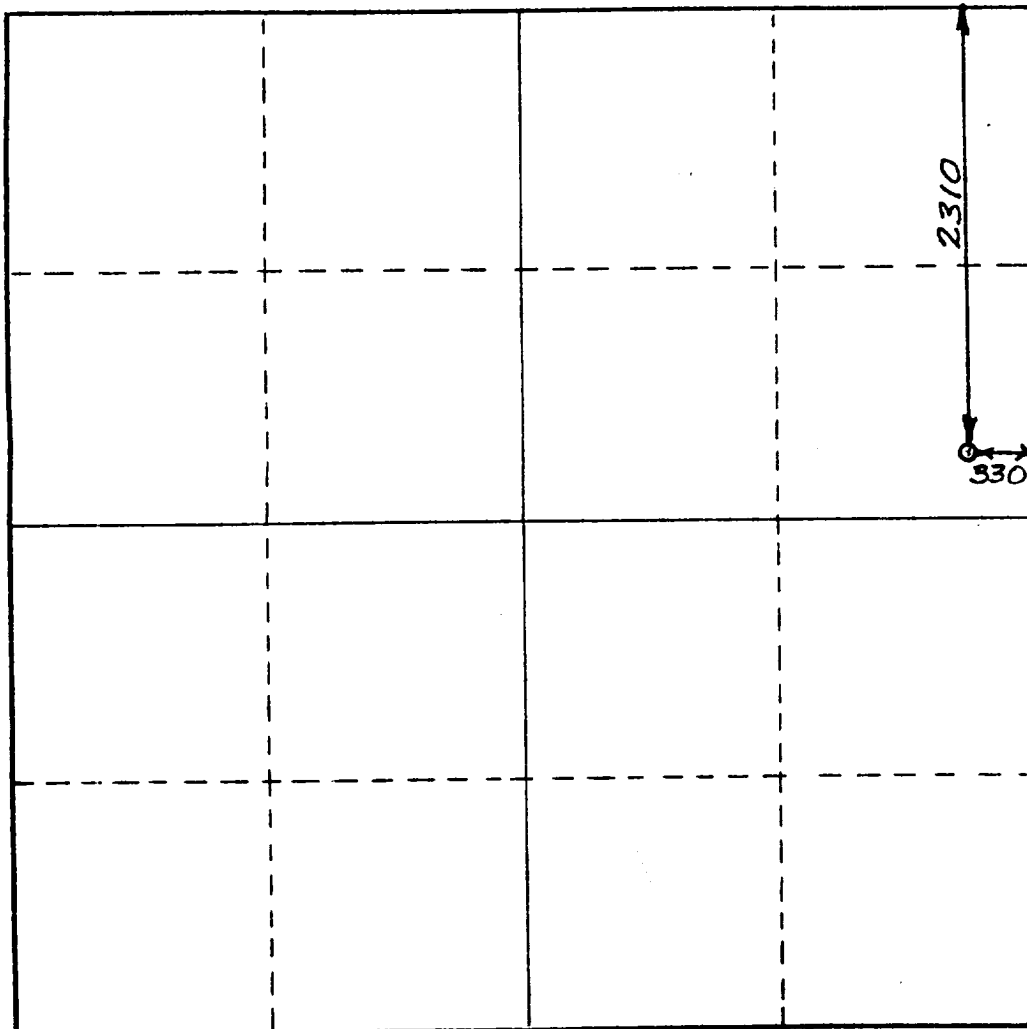
Operator Metex Pipe and Supply			Lease Wilson Federal		Well No. 1
Unit Letter H	Section 35	Township 18 SOUTH	Range 29 EAST	County EDDY	
Actual Footage Location of Well: 2310 feet from the NORTH line and 330 feet from the EAST line					
Ground Level Elev. 3442.9	Producing Formation San Andres	Pool Leo, 7 Rivers, Qn, Grbg, S/A		Dedicated Acreage: 40 Acres	

1. Outline the acreage dedicated to the subject well by colored pencil or hachure marks on the plat below.
2. If more than one lease is dedicated to the well, outline each and identify the ownership thereof (both as to working interest and royalty).
3. If more than one lease of different ownership is dedicated to the well, have the interests of all owners been consolidated by communitization, unitization, force-pooling, etc?

☐ Yes ☐ No If answer is "yes," type of consolidation _____

If answer is "no," list the owners and tract descriptions which have actually been consolidated. (Use reverse side of this form if necessary.) _____

No allowable will be assigned to the well until all interests have been consolidated (by communitization, unitization, forced-pooling, or otherwise) or until a non-standard unit, eliminating such interests, has been approved by the Commission.

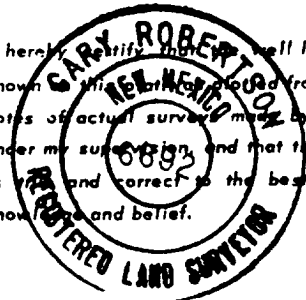


CERTIFICATION

I hereby certify that the information contained herein is true and complete to the best of my knowledge and belief.

Name
Martin B. Muncy d/b/a
Position
Metex Pipe and Supply
Company
Metex Pipe and Supply
Date
January 28, 1985

I hereby certify that the well location shown on this plat is plotted from field notes of actual survey made by me or under my supervision, and that the same is true and correct to the best of my knowledge and belief.

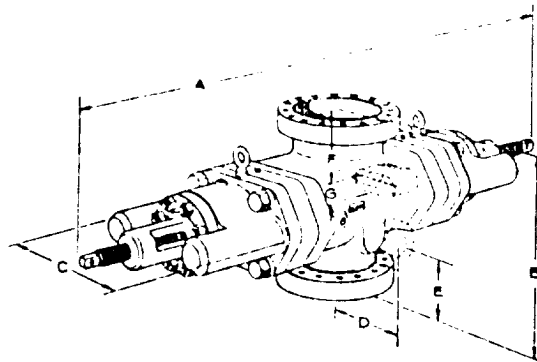


Date Surveyed
2 OCT. 1984
Registered Professional Engineer and/or Land Surveyor

Gary Robert Muncy
Certificate No. **6692**



U BLOWOUT PREVENTER ENGINEERING DATA



Single Open Face Flanged U Blowout Preventer

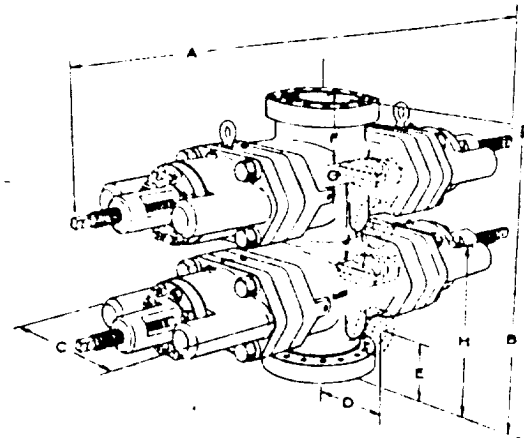
Side Outlets to 4" size (7-1/16" on 26-3/4" preventers) can be provided beneath each set of rams, on either or both sides of U preventers. Side outlet flanges are open face and have the same pressure rating as the vertical run flanges. Valve removal preparations can be provided. To obtain a quotation, the number and size of outlets should be specified.

Flanges conform to API Standard 6A. Type 6BX flanges are standard for 10,000 psi, 15,000 psi, and 20,000 psi working pressures and for 5000 psi working pressures for 13-5/8" and larger bore preventers.

Although most preventers have open face flanges or Cameron clamp hubs, preventers with studed flanges can be furnished.

Sizes and Dimensions are in inches. The over-all length "A" given in the tables does not include the optional wedgelocks. No spacers between rams are included in the table of dimensions of double ram models. Preventers with spacers to clear tool joints can be obtained on special order. For information on preventers with spacers, or sizes not listed, consult your Cameron representative.

Hydraulic Control Connections to operate rams and bonnets are 1" NPT. There are two connections for each set of rams. Hydraulic ram lock connections are 1/2" NPT.



Double Open Face Flanged U Blowout Preventer

Engineering Data Designations. See Charts on Following Page

- A-1 Over-all length, bonnets closed, locking screws locked
- A-2 Over-all length, ram change, bonnets opened, locking screws unlocked
- B-1 Over-all height flanged
- B-2 As above, with Cameron clamp hubs
- C Over-all width without side outlets (max width)
- D Centerline of preventer to outlet flange or hub face. Distance is variable.
- E-1 Centerline of side outlet (outlet below lower rams in double model) to bottom flange face
- E-2 As above, to bottom hub face
- F-1 Top of upper ram to top flange face
- F-2 As above, to top hub face
- G Ram height
- H-1 Centerline of side outlet between rams to bottom flange face
- H-2 As above, to bottom hub face
- J Top of lower ram to bottom of upper ram

Metex Pipe And Supply

Wilson Fed. # 1

11" 5000# Double

METEX PIPE & SUPPLY

2407 SIERRA VISTA RD.

ARTESIA, NEW MEXICO 88210

APPLICATION FOR DRILLING

Wilson Federal #1

2310' FNL & 330' FEL

S-35, T-18S, R-29E Eddy Co., N.M. 015068

1. The geologic surface formation is quaternary.
2. The estimated tops of geologic markers are as follows:

Base Salt-----	385'	Queen-----	2300'
Seven Rivers-----	1540'		
Grayburg-----	2597'		
San Andres-----	2960'		
3. The estimated depths at which anticipated water, oil or gas formations are expected to be encountered are:

Water:	SLIGHT CHANCE in random sands to 250'
Oil:	Severn Rivers, Grayburg, Queen, and San Andres at depths listed in numeral 2 above.
4. Proposed casing program: See form 9-331C
5. Pressure control equipment: See form 9-331C, Exhibit E.
6. Drilling mud: Surface to 350 ft. Fresh water and native mud.
350' to T.D. brine water and salt water gel.
7. Testing, logging and coring:

DST:	NONE planned
Coring:	NONE planned
Logging:	CCL/CBL TD to surface
	GR/SNP, DLL/RXO TD to surface.
8. No abnormal temperatures or pressures anticipated.
9. Anticipated spud date: April 1, 1985

(EDDY COUNTY)

OIL CITY QUADRANGLE
15-MINUTE SERIES

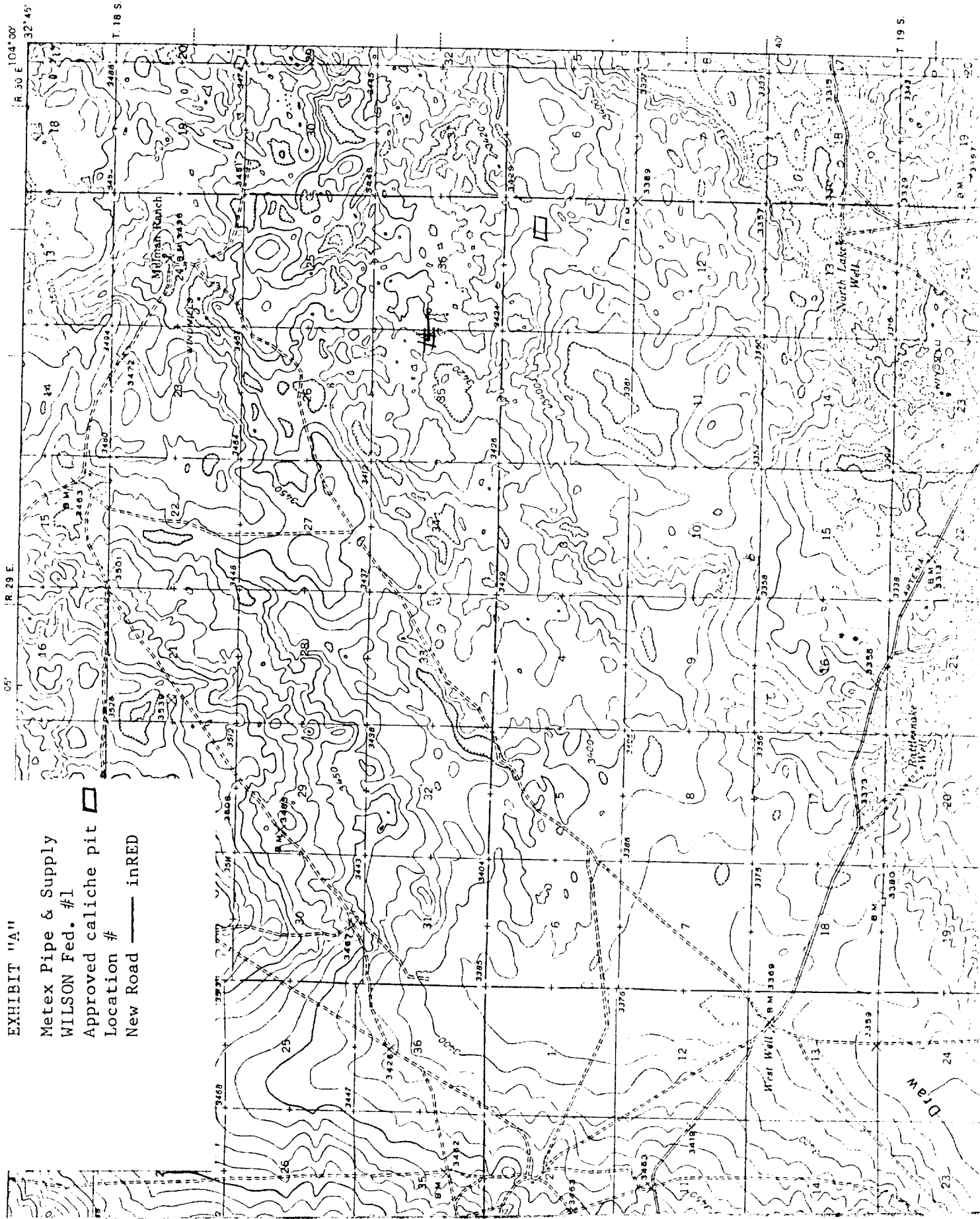



EXHIBIT "A"

Metex Pipe & Supply
WILSON Fed. #1
Approved caliche pit 
Location #
New Road — inRED