

Form 3160-3
(November 1983)
(formerly 9-331C)

FEB 22 1985

SUBMIT IN 'PLICATE*
(Other instructions on
reverse side)

Form approved.
Budget Bureau No. 1004-0136
Expires August 31, 1985

UNITED STATES
DEPARTMENT OF THE INTERIOR
BUREAU OF LAND MANAGEMENT

APPLICATION FOR PERMIT TO DRILL, DEEPEN, OR PLUG BACK

DRILL ☒

DEEPEN ☐

PLUG BACK ☐

b. TYPE OF WELL

OIL
WELL ☒

GAS
WELL ☐

OTHER

SINGLE
ZONE ☐

MULTIPLE
ZONE ☐

2. NAME OF OPERATOR

Collier Energy, Inc. ✓

3. ADDRESS OF OPERATOR

P.O. Drawer R, Artesia, New Mexico 88210

4. LOCATION OF WELL (Report location clearly and in accordance with any State requirements.)*

At surface

330' FSL & 2310' FEL of Section

At proposed prod. zone

same

(Unit 0)

(SW $\frac{1}{4}$ SE $\frac{1}{4}$)

14. DISTANCE IN MILES AND DIRECTION FROM NEAREST TOWN OR POST OFFICE*

11 air miles east-southeast of Artesia, NM

10. DISTANCE FROM PROPOSED*
LOCATION TO NEAREST
PROPERTY OR LEASE LINE, FT.
(Also to nearest drlg. unit line, if any)

330'

(330')

16. NO. OF ACRES IN LEASE

480

17. NO. OF ACRES ASSIGNED
TO THIS WELL

40

18. DISTANCE FROM PROPOSED LOCATION*
TO NEAREST WELL, DRILLING, COMPLETED,
OR APPLIED FOR, ON THIS LEASE, FT.

1320'

19. PROPOSED DEPTH

2300' San Andres

20. ROTARY OR CABLE TOOLS

Rotary

21. ELEVATIONS (Show whether DF, RT, GR, etc.)

3589 GR

22. APPROX. DATE WORK WILL START*

February 28, 1985

23.

PROPOSED CASING AND CEMENTING PROGRAM

SIZE OF HOLE	SIZE OF CASING	WEIGHT PER FOOT	SETTING DEPTH	QUANTITY OF CEMENT
12 $\frac{1}{4}$ "	8 5/8"	24#	350'	Sufficient to circulate
7 7/8"	5 $\frac{1}{2}$ "	15.5#	2300'	350 sks

Pay zone will be completed in a prudent manner for optimum production.

Attached are: 1. Well Location and Acreage Dedication Plat

2. Supplemental Drilling Data

3. Surface use plan

IN ABOVE SPACE DESCRIBE PROPOSED PROGRAM: If proposal is to deepen or plug back, give data on present productive zone and proposed new productive zone. If proposal is to drill or deepen directionally, give pertinent data on subsurface locations and measured and true vertical depths. Give blowout preventer program, if any.

24.

SIGNED

Chuck Morgan

TITLE

Engr.

DATE 2/6/85

(This space for Federal or State office use)

PERMIT NO.

APPROVAL DATE

APPROVED BY

Dan Wood

TITLE

AREA MANAGER
CARLSBAD FIELD

DATE

2-21-85

CONDITIONS OF APPROVAL, IF ANY:

APPROVAL SUBJECT TO
GENERAL REQUIREMENTS AND
SPECIAL STIPULATIONS

*See Instructions On Reverse Side

Title 18 U.S.C. Section 1001, makes it a crime for any person knowingly and willfully to make to any department or agency of the United States any false, fictitious or fraudulent statements or representations as to any matter within its jurisdiction.

All distances must be from the outer boundaries of the Section.

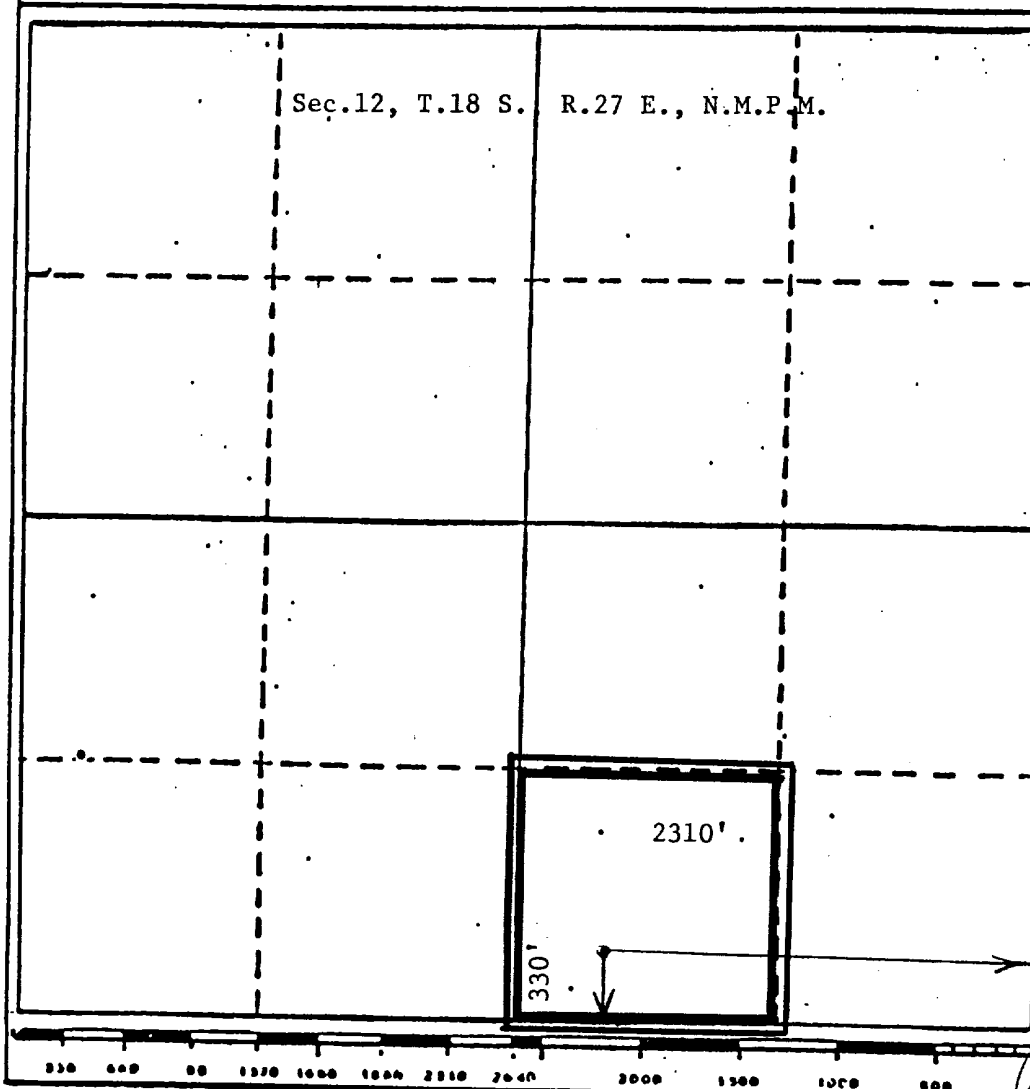
Operator Collier Energy, Inc.		Lease White Oaks Federal		Well No. #1
Unit/Letter 0	Section 12	Township 18 South	Range 27 East	County Eddy
Actual Wellbore Location of Well:				
330 feet from the South line and		2310 feet from the East line		
Ground Level Elev. 3589	Producing Formation Q - Gb - SA	Pore Artesia	Dedicated Acreage 40 Acres	

1. Outline the acreage dedicated to the subject well by colored pencil or hatchure marks on the plat below.
2. If more than one lease is dedicated to the well, outline each and identify the ownership thereof (both as to working interest and royalty).
3. If more than one lease of different ownership is dedicated to the well, have the interests of all owners been consolidated by communitization, unitization, force-pooling, etc?

☐ Yes ☐ No If answer is "yes," type of consolidation _____

If answer is "no," list the owners and tract descriptions which have actually been consolidated. (Use reverse side of this form if necessary.) _____

No allowable will be assigned to the well until all interests have been consolidated (by communitization, unitization, forced-pooling, or otherwise) or until a non-standard unit, eliminating such interests, has been approved by the Division



CERTIFICATION

I hereby certify that the information contained herein is true and complete to the best of my knowledge and belief.

Chuck Morgan

Name

Chuck Morgan

Position

Engr.

Company

Collier Energy, Inc.

Date

February 6, 1985

I hereby certify that the well location shown on this plat was plotted from field notes of actual surveys made by me or under my supervision, and that the same is true and correct to the best of my knowledge and belief.

JOHN D. JACQUES

Date Surveyed

January 29, 1985

Registered Professional Engineer and/or Land Surveyor

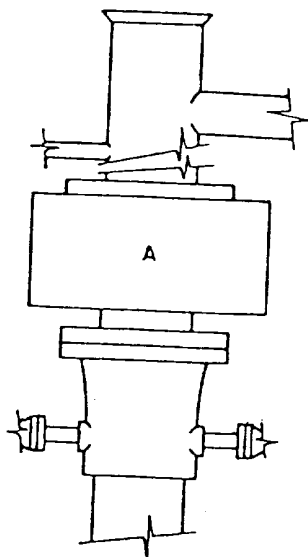
John D. Jacques, P.E. & L.S.

Certificate No.

6290

BLOWOUT PREVENTER ARRANGEMENT

Collier Energy, Inc.
Well #1 White Oaks Fed.
SW $\frac{1}{4}$ SE $\frac{1}{4}$ Sec. 12-18S-27E



ARRANGEMENT A

SUPPLEMENTAL DRILLING DATA

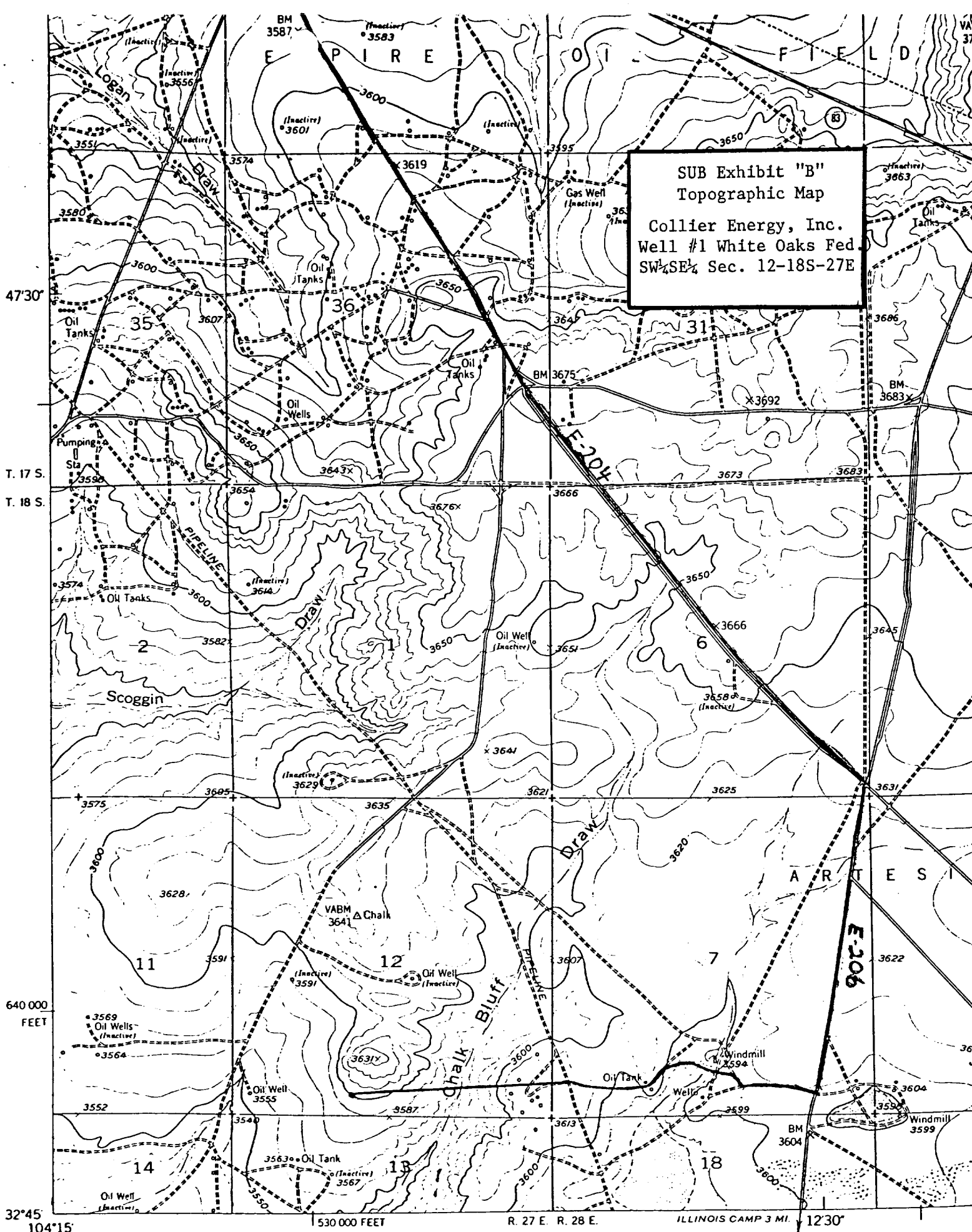
COLLIER ENERGY, INC.
WELL #1 WHITE OAKS FED.
SW $\frac{1}{4}$ SE $\frac{1}{4}$ SEC. 12-18S-27E
Eddy County, New Mexico

1. SURFACE FORMATION: Artesia Group of Permian Age. (Elev. 3589 feet).
2. ESTIMATED TOPS OF GEOLOGIC MARKERS:

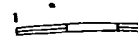
Yates	275'	Grayburg	1650'
Seven Rivers	475'	San Andres	2050'
Queen	1225'	Lovington Sand	2200'
3. ANTICIPATED POROSITY ZONES:

Water	-	Above 300'
Oil	-	1500 - 2300'
4. CASING DESIGN:

Size	Interval	Weight	Grade	Joint
8 5/8"	0 - 350'	24.0#	K-55	STC
5 1/2"	0 - 2600'	15.5#	K-55	STC
5. SURFACE CONTROL EQUIPMENT: A double ram-type or annular BOP will be used.
6. CIRCULATING MEDIUM: Salt water mud conditioned as necessary for control of viscosity and water loss. Fresh water used on surface hole.
7. AUXILIARY EQUIPMENT: None considered necessary on this shallow development well.
8. TESTING, LOGGING AND CORING PROGRAMS: No coring or DST's are planned. Electric logs will include a Compensated Neutron Log with Gamma Ray.
9. ABNORMAL PRESSURES, TEMPERATURES OR GASES: None anticipated.
10. ANTICIPATED STARTING DATE: It is planned that operations will commence about February 28, 1985. Duration of drilling, completion and testing operations should be one to five weeks.



Mapped, edited, and published by the Geological Survey
 Control by USGS and USC&GS
 Culture and drainage in part compiled from aerial photographs



SUB Exhibit "D"
Sketch of Well Pad
Collier Energy, Inc.
Well #1 White Oaks Fed.
SW $\frac{1}{4}$ SE $\frac{1}{4}$ Sec. 12-18S-27E

