

Form 3160-3
(November 1983)
(formerly 9-331C)

Artesia, NM 88210

UNITED STATES
DEPARTMENT OF THE INTERIOR
BUREAU OF LAND MANAGEMENT

RECEIVED BY IN LICATE*
(Other instructions on reverse side)

Form approved.
Budget Bureau No. 1004-0136
Expires August 31, 1985

APPLICATION FOR PERMIT TO DRILL, DEEPEN OR PLUG BACK

1a. TYPE OF WORK

DRILL ☒

DEEPEN ☐

PLUG BACK ☐

b. TYPE OF WELL

OIL WELL ☒

GAS WELL ☐

OTHER

SINGLE ZONE ☐

MULTIPLE ZONE ☐

2. NAME OF OPERATOR

Elliott Oil Company

3. ADDRESS OF OPERATOR

P.O. Box 1355, Roswell, New Mexico 88201

4. LOCATION OF WELL (Report location clearly and in accordance with any State requirements)

At surface

1980' from South, 660' from West Sec. 31

At proposed prod. zone

Some

14. DISTANCE IN MILES AND DIRECTION FROM NEAREST TOWN OR POST OFFICE*

25 miles SE Artesia, New Mexico

10. DISTANCE FROM PROPOSED*

LOCATION TO NEAREST PROPERTY OR LEASE LINE, FT.
(Also to nearest drig. unit line, if any)

660'

16. NO. OF ACRES IN LEASE

1951.53

17. NO. OF ACRES ASSIGNED TO THIS WELL

40

18. DISTANCE FROM PROPOSED LOCATION* TO NEAREST WELL, DRILLING, COMPLETED, OR APPLIED FOR, ON THIS LEASE, FT.

1320'

19. PROPOSED DEPTH

3000

20. ROTARY OR CABLE TOOLS

Rotary

21. ELEVATIONS (Show whether DF, RT, GR, etc.)

GR 3416

22. APPROX. DATE WORK WILL START*

April 1, 1985

23. PROPOSED CASING AND CEMENTING PROGRAM

| SIZE OF HOLE | SIZE OF CASING | WEIGHT PER FOOT | SETTING DEPTH | QUANTITY OF CEMENT |
|--------------|----------------|-----------------|------------------|----------------------|
| 12 1/4" | 8 5/8 | 23# | 3000' alone salt | 100 SKs Circulate |
| 7 7/8" | 5 1/2 | 15.5# | | 150 SKs to base salt |

Plan to drill 12 1/4" hole to 400' and set 8 5/8" O.D. 23# H-40 casing with sufficient cement to circulate; then drill 7 7/8" hole to 3000' run 5 1/2" O.D. 15.5# J-55 casing and cement with sufficient cement to come up to base of salt. Drilling fluid Gel-brine water mud; Well to test Seven Rivers, Queen, and Grayberg.

FW mud / 8 5/8 surface casing.

IN ABOVE SPACE DESCRIBE PROPOSED PROGRAM: If proposal is to deepen or plug back, give data on present productive zone and proposed new productive zone. If proposal is to drill or deepen directionally, give pertinent data on subsurface locations and measured and true vertical depths. Give blowout preventer program, if any.

24.

SIGNED

TITLE

Owner

DATE 2/20/85

(This space for Federal or State office use)

PERMIT NO.

APPROVAL DATE

APPROVED BY

TITLE

DATE

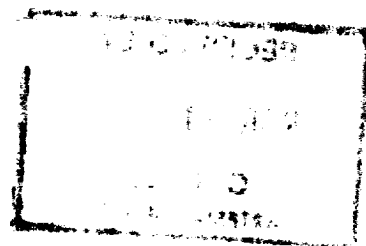
3-1-85

CONDITIONS OF APPROVAL, IF ANY:

APPROVAL SUBJECT TO
GENERAL REQUIREMENTS AND
SPECIAL STIPULATIONS

*See Instructions On Reverse Side

Title 18 U.S.C. Section 1001, makes it a crime for any person knowingly and willfully to make to any department or agency of the United States any false, fictitious or fraudulent statements or representations as to any matter within its jurisdiction.



All distances must be from the outer boundaries of the Section.

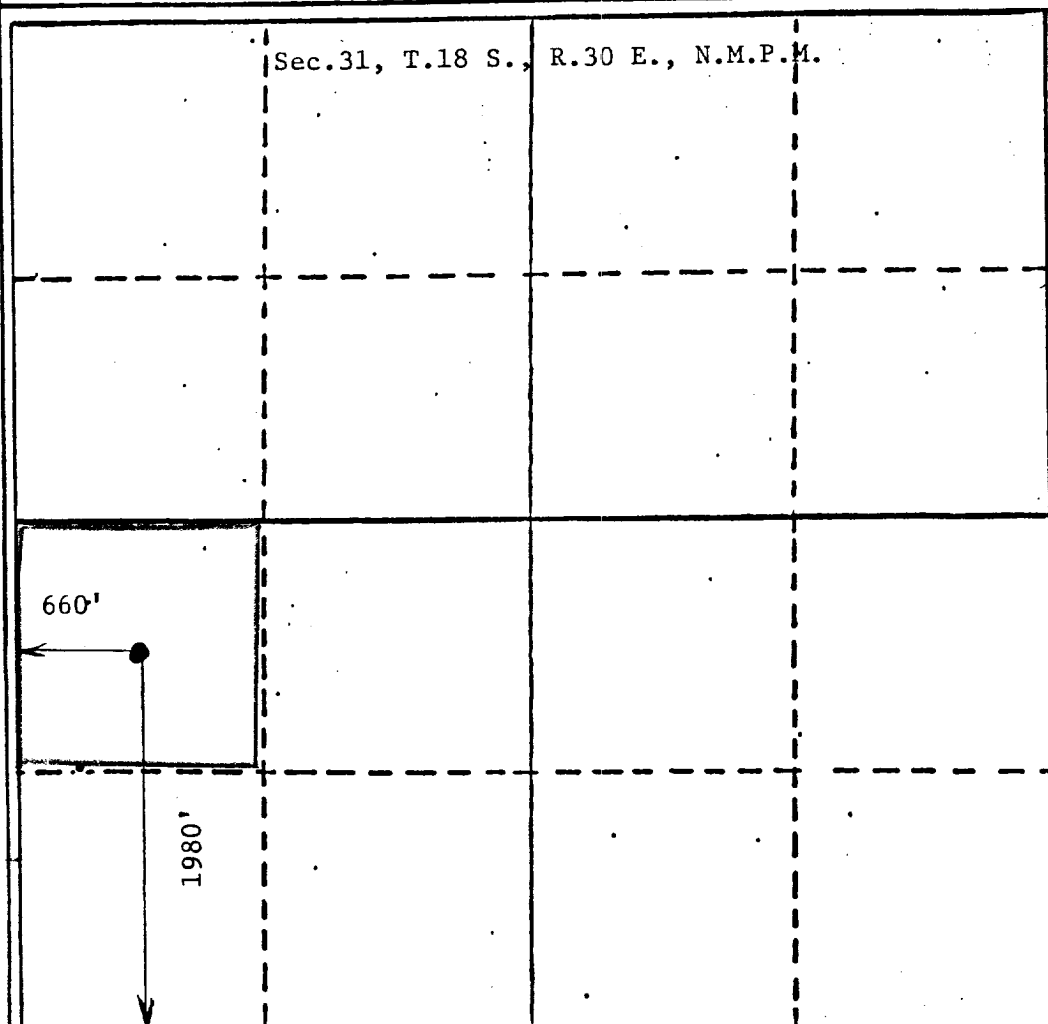
| | | | | | |
|---|------------------------------|----------------------|------------------------|-------------------------------|----------------|
| Operator Elliot Oil | | | Lease E. M. Elliott | | Well No. #4 |
| Unit Letter L | Section 31 | Township 18 South | Range 30 East | County Eddy | |
| Actual Postage Location of Well: 1980 feet from the South line and 660 feet from the West line | | | | | |
| Ground Level Elev. 3416 | Producing Formation Queen | | Pool South Leo | Dedicated Acreage 40 Acres | |

1. Outline the acreage dedicated to the subject well by colored pencil or hatchure marks on the plat below.
2. If more than one lease is dedicated to the well, outline each and identify the ownership thereof (both as to working interest and royalty).
3. If more than one lease of different ownership is dedicated to the well, have the interests of all owners been consolidated by communitization, unitization, force-pooling, etc?

☐ Yes ☐ No If answer is "yes" type of consolidation _____

If answer is "no," list the owners and tract descriptions which have actually been consolidated. (Use reverse side of this form if necessary.) _____

No allowable will be assigned to the well until all interests have been consolidated (by communitization, unitization, forced-pooling, or otherwise) or until a non-standard unit, eliminating such interests, has been approved by the Division



CERTIFICATION

I hereby certify that the information contained herein is true and complete to the best of my knowledge and belief.

Name _____

Position _____

Owner

Company _____

Elliott Oil Co.

Date _____

2/20/85

I hereby certify that the well location shown on this plat was plotted from field notes of actual surveys made by me or under my supervision, and that the same is true and correct to the best of my knowledge and belief.

JOHN D. JACQUES
NEW MEXICO

Date Surveyed _____

December 22, 1984

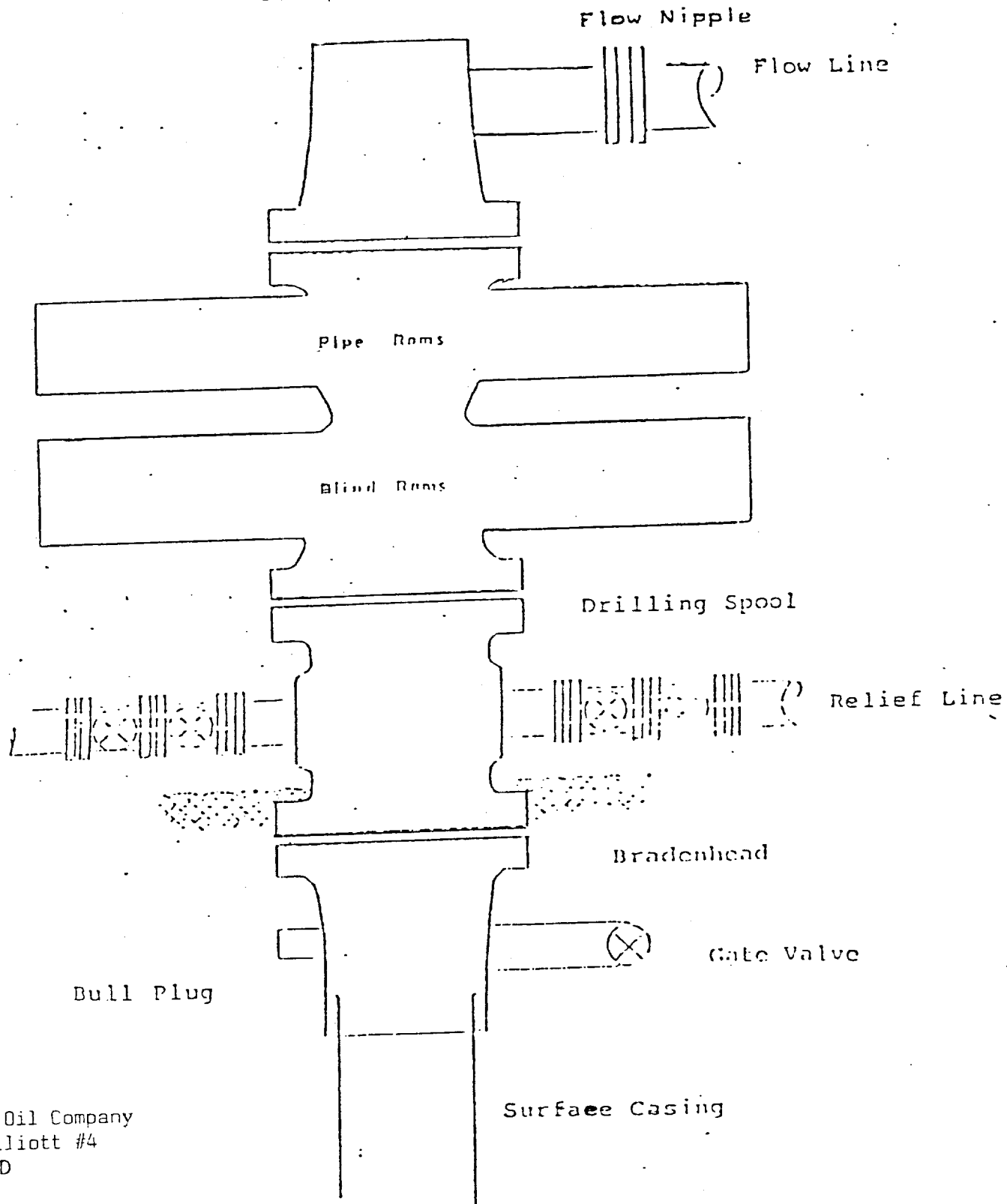
Registered Professional Engineer and/or Land Surveyor

John D. Jacques, P.E. & L.S.

Certificate No. _____

6290

FOR A QUEEN WELL



Elliott Oil Company
E. M. Elliott #4
Exhibit D

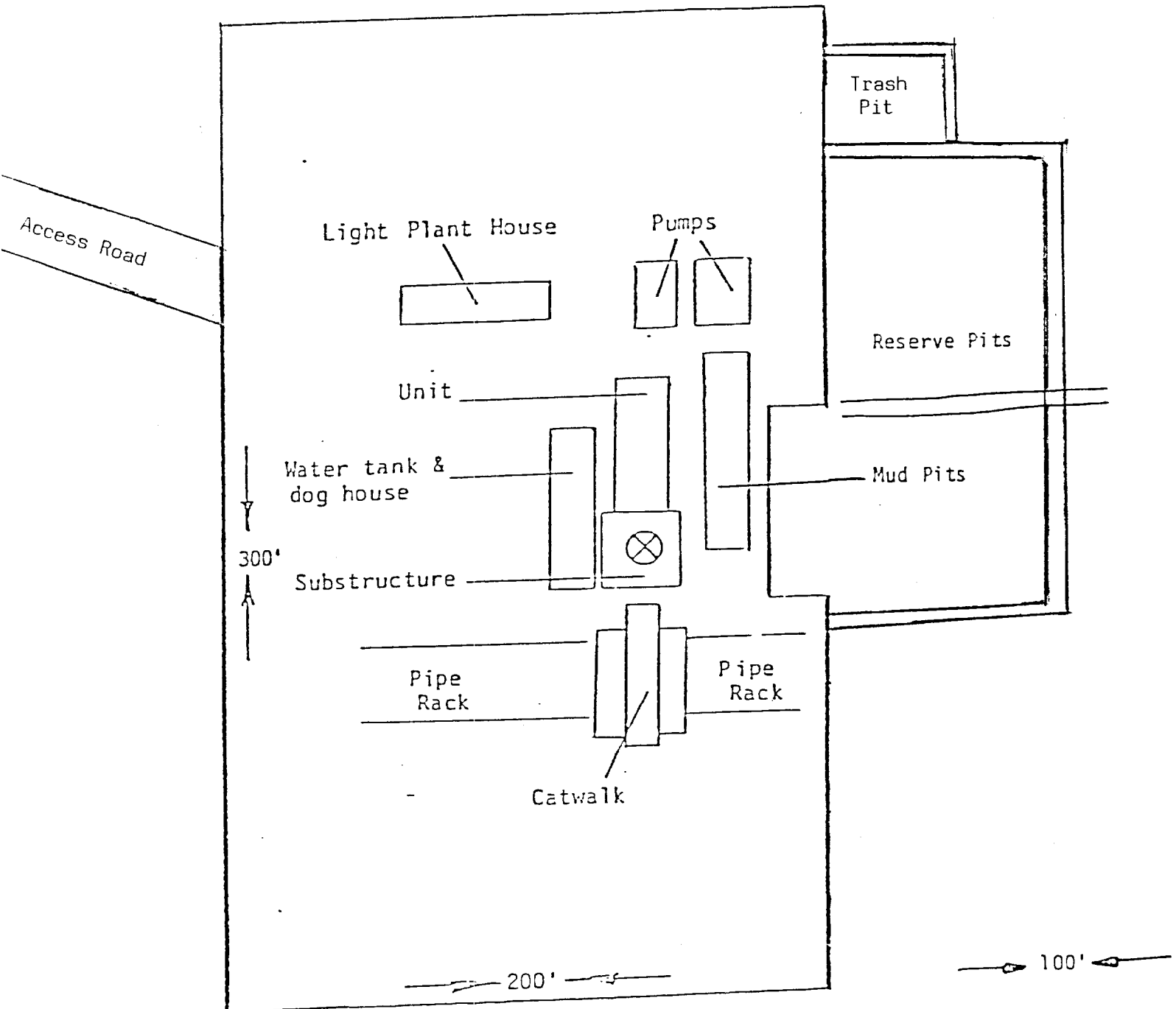
Series 900 Double Gate ROP, rated
at 3000 psi Working Pressure

OIL CITY QUADRANGLE
15-MINUTE SERIES

EXHIBIT E



TYPICAL LOCATION
FOR
A QUEEN WELL



ELLIOTT OIL COMPANY
E. M. Elliott #4
Exhibit C