

Art 4, NM 88210

RECEIVED BY
(Other instruction on reverse side)Form approved.
Budget Bureau No. 42-R1425.UNITED STATES
DEPARTMENT OF THE INTERIOR
GEOLOGICAL SURVEY

MAR - 6 1985

APPLICATION FOR PERMIT TO DRILL, DEEPEN, OR PLUG BACK

1a. TYPE OF WORK

DRILL ☒DEEPEN ☐PLUG BACK ☐

b. TYPE OF WELL

OIL WELL ☒GAS WELL ☐

OTHER

SINGLE ZONE ☐MULTIPLE ZONE ☐

2. NAME OF OPERATOR

MYCO INDUSTRIES, INC. ✓

3. ADDRESS OF OPERATOR

207 South Fourth Street, Artesia, New Mexico 88210

4. LOCATION OF WELL (Report location clearly and in accordance with any State requirements.)*

At surface

2310' FNL and 2310' FWL

At proposed prod. zone
same

14. DISTANCE IN MILES AND DIRECTION FROM NEAREST TOWN OR POST OFFICE*

Approximately 25 miles ESE of Artesia, New Mexico.

15. DISTANCE FROM PROPOSED*

LOCATION TO NEAREST
PROPERTY OR LEASE LINE, FT.
(Also to nearest drlg. unit line, if any)

2310'

16. NO. OF ACRES IN LEASE

812.67

17. NO. OF ACRES ASSIGNED
TO THIS WELL

40

18. DISTANCE FROM PROPOSED LOCATION*

TO NEAREST WELL, DRILLING, COMPLETED,
OR APPLIED FOR, ON THIS LEASE, FT.

19. PROPOSED DEPTH

3200'

20. ROTARY OR CABLE TOOLS

Rotary

21. ELEVATIONS (Show whether DF, RT, GR, etc.)

3422' GL

22. APPROX. DATE WORK WILL START*

ASAP

23.

PROPOSED CASING AND CEMENTING PROGRAM

SIZE OF HOLE	SIZE OF CASING	WEIGHT PER FOOT	SETTING DEPTH	QUANTITY OF CEMENT
12 1/4"	8 5/8"	23-24# K-55	275'	300 sx circulated
7 7/8"	5 1/2"	15.5# K-55	TD	450 sx

Propose to drill a San Andres test. Approximately 275' of 8 5/8" casing will be run and cemented to the surface to shut off gravel and caving. A tapered oil string will be run and cemented, perforated and sand frac'd for production.

MUD PROGRAM: FW/Gel/LCM to 275'; Brine to TD.

BOP PROGRAM: BOP's will be installed on the 8 5/8" casing and tested.

IN ABOVE SPACE DESCRIBE PROPOSED PROGRAM: If proposal is to deepen or plug back, give data on present productive zone and proposed new productive zone. If proposal is to drill or deepen directionally, give pertinent data on subsurface locations and measured and true vertical depths. Give blowout preventer program, if any.

24.

SIGNED

Cy Carman

TITLE

Regulatory Agent

DATE 2/11/85

(This space for Federal or State office use)

PERMIT NO.

APPROVAL DATE

APPROVED BY

J. Frank Hooten

TITLE

AREA MANAGER
CARLSBAD REGIONAL OFFICE

DATE

3-5-85

CONDITIONS OF APPROVAL, IF ANY:

APPROVAL SUBJECT TO
GENERAL REQUIREMENTS AND
SPECIAL STIPULATIONS
ATTACHED

Printed FDI
APR 4 1985
3-15-85

NEW MEXICO OIL CONSERVATION COMMISSION
WELL LOCATION AND ACREAGE DEDICATION PLAT

Form C-102
Supersedes C-128
Effective 1-1-65

All distances must be from the outer boundaries of the Section.

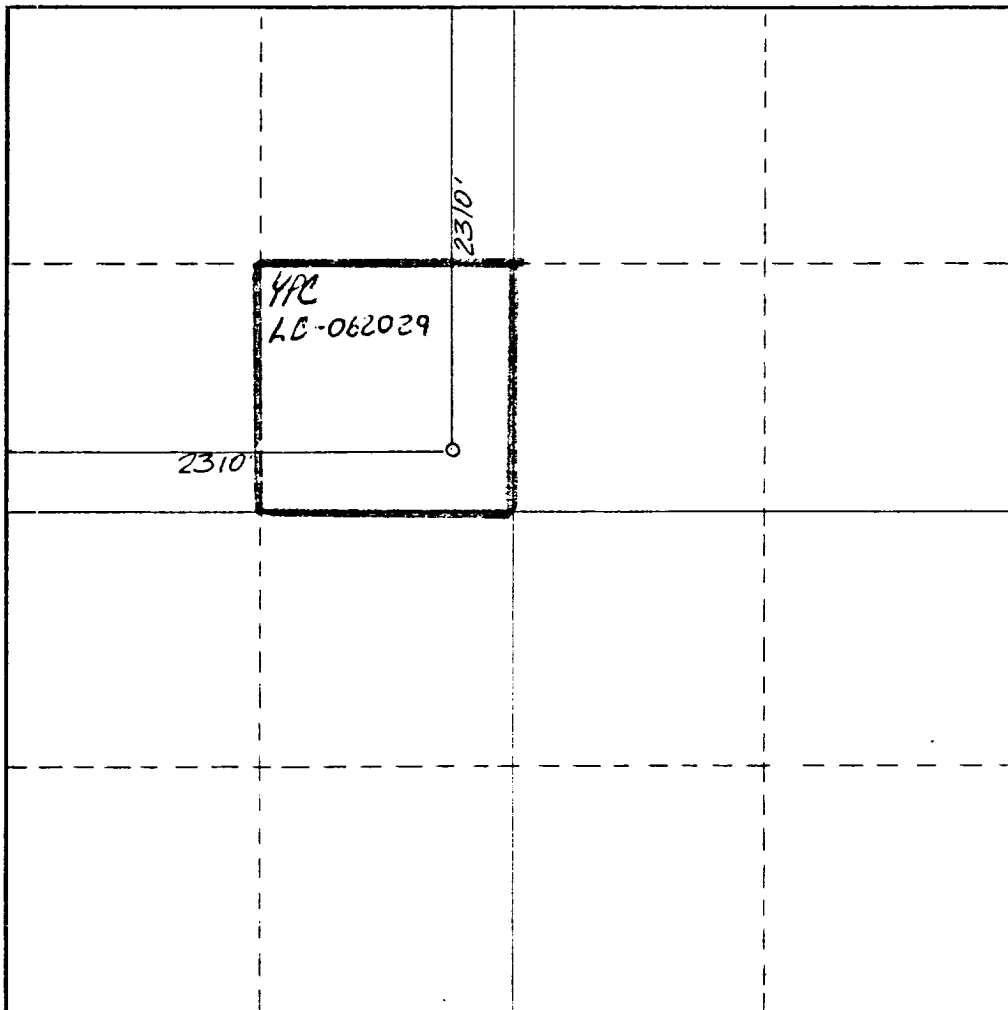
Operator MYCO INDUSTRIES INC.			Lease Roadrunner Federal		Well No. 2
Unit Letter F	Section 35	Township 18 South	Range 29 East	County Eddy	
Actual Footage Location of Well: 2310 feet from the North line and 2310 feet from the West line					
Ground Level Elev. 3422.	Producing Formation SAN ANDRES		Pool South Leo, Seven Rivers Queen, Grayburg, SAN ANDRES		Dedicated Acreage: 40 Acres

1. Outline the acreage dedicated to the subject well by colored pencil or hachure marks on the plat below.
2. If more than one lease is dedicated to the well, outline each and identify the ownership thereof (both as to working interest and royalty).
3. If more than one lease of different ownership is dedicated to the well, have the interests of all owners been consolidated by communitization, unitization, force-pooling, etc?

☐ Yes ☒ No If answer is "yes," type of consolidation _____

If answer is "no," list the owners and tract descriptions which have actually been consolidated. (Use reverse side of this form if necessary.) _____

No allowable will be assigned to the well until all interests have been consolidated (by communitization, unitization, forced-pooling, or otherwise) or until a non-standard unit, eliminating such interests, has been approved by the Commission.



CERTIFICATION

I hereby certify that the information contained herein is true and complete to the best of my knowledge and belief.

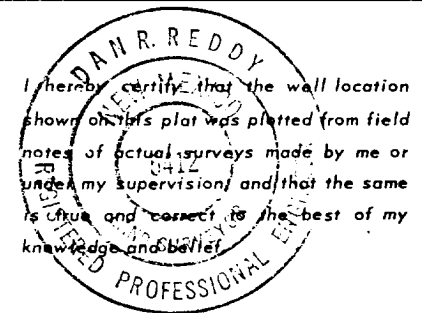
Cy Cowan

Name
Cy Cowan

Position
Regulatory Agent

Company
Myco Industries, Inc.

Date
February 11, 1985



Date Surveyed
January 29, 1985

Registered Professional Engineer
and/or Land Surveyor

Dan R. Reddy

Certificate No.
NM PE&LS NO. 5412

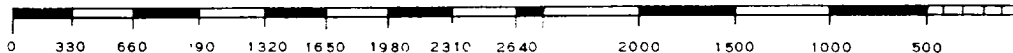
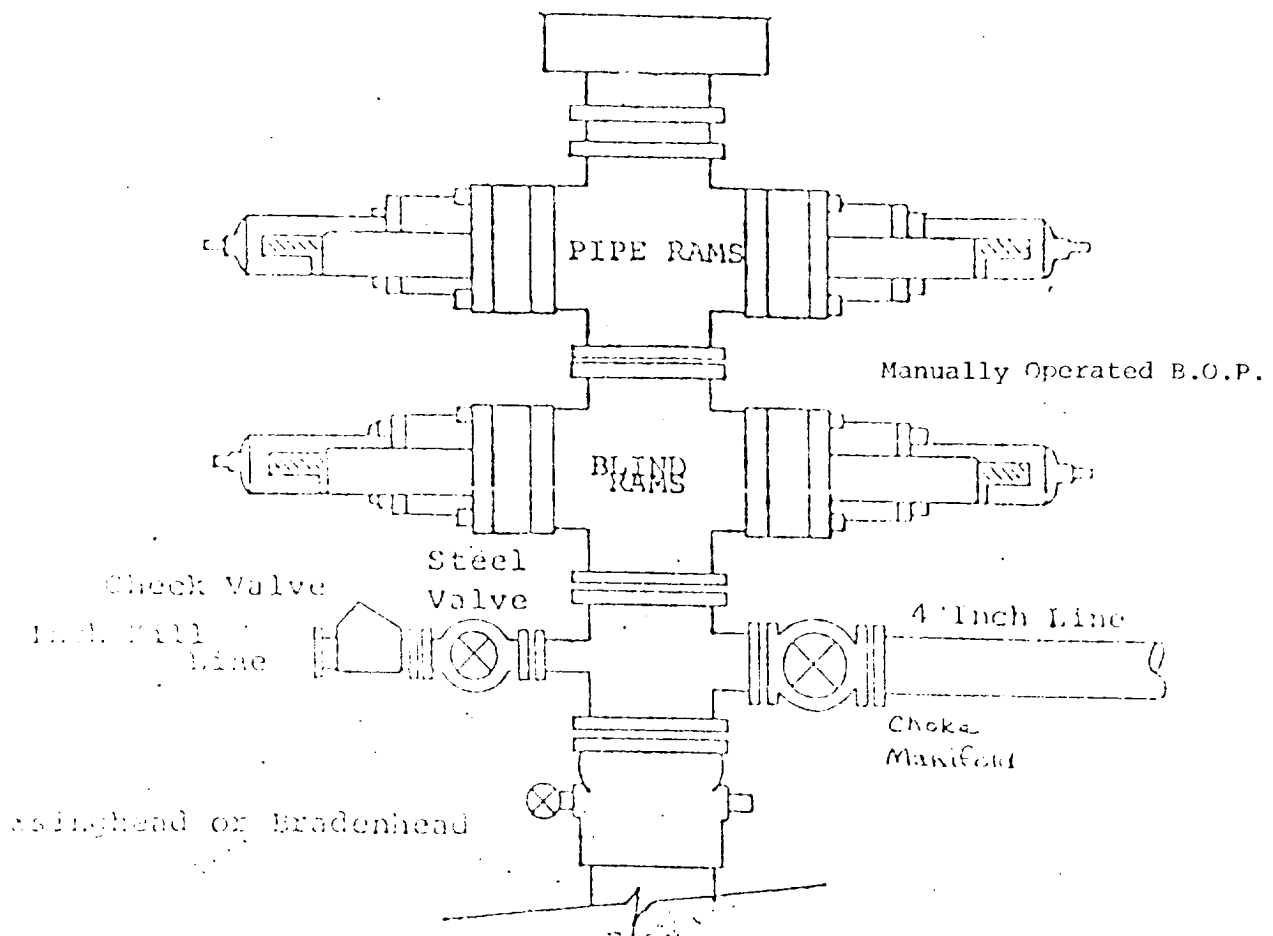


EXHIBIT B
BOP DIAGRAM
RATED 3000[#]



MYCO INDUSTRIES, INC.
Roadrunner Federal #2
2310' FNL and 2310' FWL
Section 35-T18S-R29E
Eddy County, New Mexico

In conjunction with Form 9-331C, Application for Permit to Drill subject well, Myco Industries, Inc. submits the following ten items of pertinent information in accordance with BLM requirements.

1. The geologic surface formation is sandy alluvium.
2. The estimated tops of geologic markers are as follows:

Yates	1150'
Seven Rivers	1450'
Queen	2110'
Penrose	2250'
Grayburg	2500'
San Andres	2950'
TD	3200'

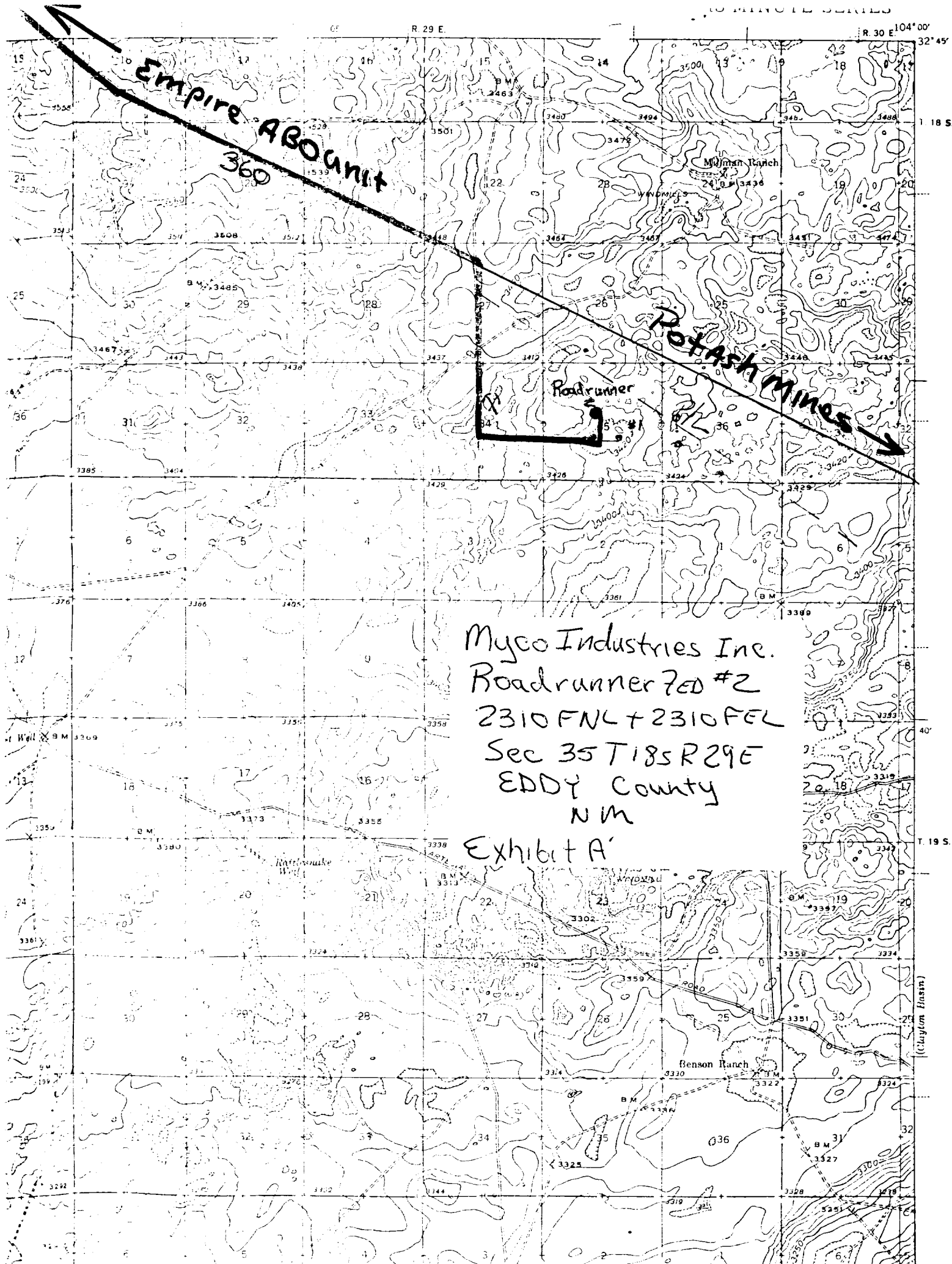
3. The estimated depths at which anticipated water, oil or gas formations are expected to be encountered:

Water: appr. 200-240'
Oil or Gas: 2560'

4. Proposed Casing Program: See Form 9-331C.
5. Pressure Control Equipment: See Form 9-331C and Exhibit B.
6. Mud Program: See Form 9-331C.
7. Auxiliary Equipment: Kelly Cock; pit level indicators and flow sensor equipment; sub with full-opening valve on floor, drill pipe connection.
8. Testing, Logging and Coring Program:

Samples: 10' samples caught out from under surface casing to TD.
DST's: As warranted, possible in Wolfcamp, Cisco Atoka and Morrow.
Coring: None
Logging: CNL-LDT TD to surface csg. w/GR-CNL to surface. DLL w/RxO TD to surface csg.
Mud Logging: One man unit out from under surface casing to TD.

9. No abnormal pressures or temperatures are anticipated.
10. Anticipated starting date: As soon as possible after approval



Myco Industries Inc.
Roadrunner 7ED #2
2310 FNL + 2310 FEL
Sec 35 T18S R29E
EDDY County
NM

Exhibit A

Exhibit C

