

RECEIVED BY

APR 18 1985

NEW OIL CONS. COMMISSION

Drawer DD

SUBMIT IN 1 LIGATE*

(Other instructions on reverse side)

Form approved.
Budget Bureau No. 42-R1425.

UNITED STATES 88210

DEPARTMENT OF THE INTERIOR

GEOLOGICAL SURVEY

30-115-25261
5. LEASE DESIGNATION AND SERIAL NO.

LC-062029

6. IF INDIAN, ALLOTTEE OR TRIBE NAME

7. UNIT AGREEMENT NAME

8. FARM OR LEASE NAME

Roadrunner Federal

9. WELL NO.

4

10. FIELD AND POOL OR WILDCAT
Seven Rivers, Queen, Gray-
11. SEC., T., R., M., OR BLM., San Andres
AND SURVEY OR AREA

Sec. 35-T18S-R29E

12. COUNTY OR PARISH 13. STATE

Eddy

NM

APPLICATION FOR PERMIT TO DRILL, DEEPEN, OR PLUG BACK

DRILL ☒DEEPEN ☐PLUG BACK ☐

b. TYPE OF WELL

OIL
WELL ☒GAS
WELL ☐

OTHER

SINGLE
ZONE ☐MULTIPLE
ZONE ☐

2. NAME OF OPERATOR

MYCO Industries, Inc. ✓

3. ADDRESS OF OPERATOR

207 South Fourth Street - Artesia, NM 88210

4. LOCATION OF WELL (Report location clearly and in accordance with any State requirements.)*

At surface

2310' FNL & 990' FWL (Unit E)

At proposed prod. zone

Same

14. DISTANCE IN MILES AND DIRECTION FROM NEAREST TOWN OR POST OFFICE*

Approximately 25 miles ESE of Artesia, New Mexico

15. DISTANCE FROM PROPOSED*

LOCATION TO NEAREST
PROPERTY OR LEASE LINE, FT.
(Also to nearest drlg. unit line, if any)

990'

16. NO. OF ACRES IN LEASE

812.67

18. DISTANCE FROM PROPOSED LOCATION*
TO NEAREST WELL DRILLING, COMPLETED,
OR APPLIED FOR, ON THIS LEASE, FT.

19. PROPOSED DEPTH

3250'

21. ELEVATIONS (Show whether DF, RT, GR, etc.)

3437' GR

23.

PROPOSED CASING AND CEMENTING PROGRAM

SIZE OF HOLE	SIZE OF CASING	WEIGHT PER FOOT	SETTING DEPTH	QUANTITY OF CEMENT
12-1/4"	8-5/8"	23-24# K-55	300'	300 sacks - circulate
7-7/8"	5-1/2"	15.5# K-55	TD	450 sacks

We propose to drill and test the San Andres and intermediate formations. Approximately 300' of 8-5/8" casing will be set and cement circulated to shut off gravel and cavings. If commercial, production casing will be run and cemented with adequate cover, perforated and stimulated as needed for production.

MUD PROGRAM: FW, gel & LCM to 300'; brine to TD

BOP PROGRAM: BOP's will be installed at the offset and tested

APR 10 1985

IN ABOVE SPACE DESCRIBE PROPOSED PROGRAM: If proposal is to deepen or plug back, give data on present productive zone and proposed new productive zone. If proposal is to drill or deepen directionally, give pertinent data on subsurface locations and measured and true vertical depths. Give blowout preventer program, if any.

24.

SIGNED

Clifton May

TITLE

Regulatory Agent

DATE

April 8, 1985

(This space for Federal or State office use)

PERMIT NO.

Orig. Sec. 35-T18S-R29E

APPROVAL DATE

APPROVED BY

TITLE

DATE

4-17-85

CONDITIONS OF APPROVAL, IF ANY:

APPROVAL SUBJECT TO
GENERAL REQUIREMENTS AND
SPECIAL STIPULATIONS
ATTACHED

**NEW MEXICO OIL CONSERVATION COMMISSION
WELL LOCATION AND ACREAGE DEDICATION PLAT**

Form C-102
Supersedes C-128
Effective 1-1-65

All distances must be from the outer boundaries of the Section.

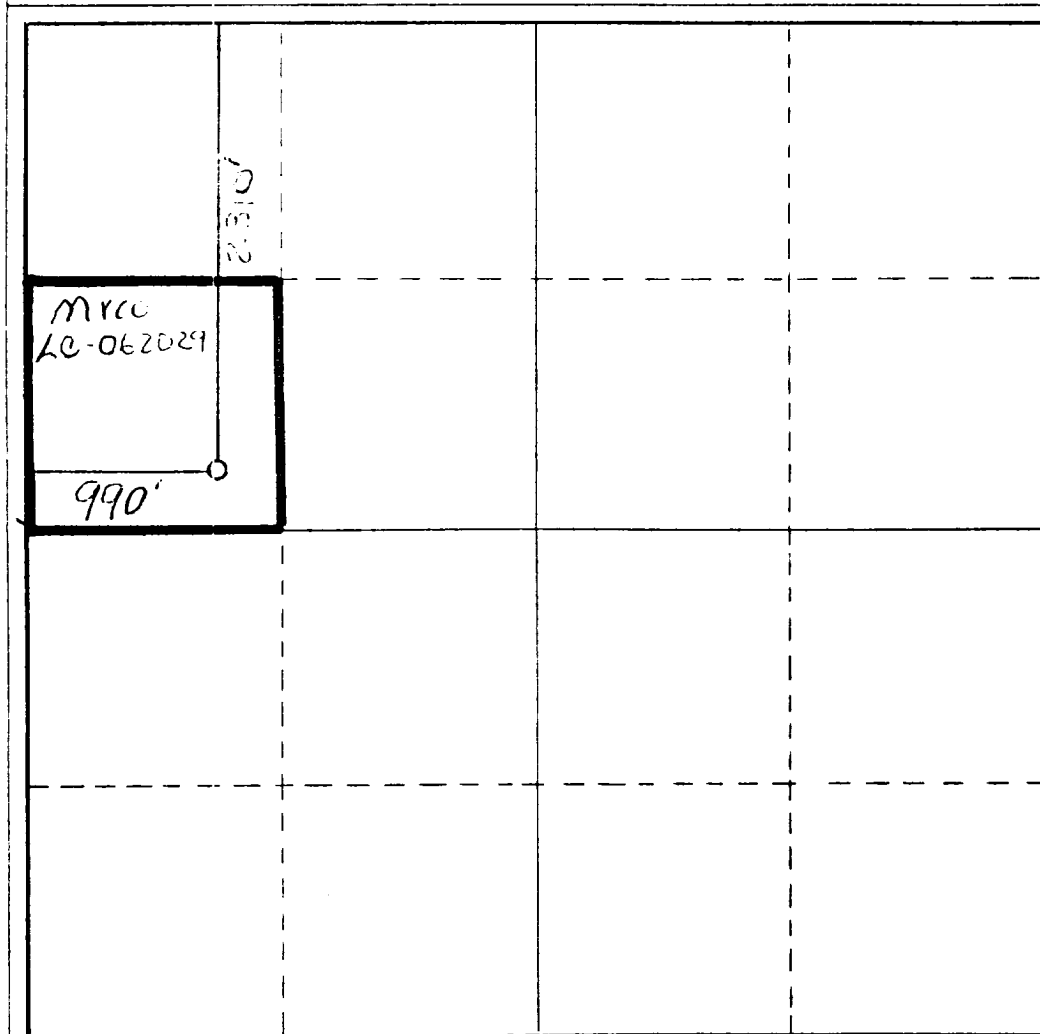
Operator MYCO Industries, Inc.			Lease Roadrunner Federal		Well No. 4
Unit Letter E	Section 35	Township 18 South	Range 29 East	County Eddy	
Actual Footage Location of Well: 2310 feet from the North line and 990 feet from the West line					
Ground Level Elev. 3437' GR	Producing Formation SAN ANDRES		Pool Seven Rivers, Queen Grayberg, SAN ANDRES		Dedicated Acreage: 40 Acres

1. Outline the acreage dedicated to the subject well by colored pencil or hachure marks on the plat below.
2. If more than one lease is dedicated to the well, outline each and identify the ownership thereof (both as to working interest and royalty).
3. If more than one lease of different ownership is dedicated to the well, have the interests of all owners been consolidated by communitization, unitization, force-pooling, etc?

☐ Yes ☒ No If answer is "yes," type of consolidation _____

If answer is "no," list the owners and tract descriptions which have actually been consolidated. (Use reverse side of this form if necessary.) _____

No allowable will be assigned to the well until all interests have been consolidated (by communitization, unitization, forced-pooling, or otherwise) or until a non-standard unit, eliminating such interests, has been approved by the Commission.



CERTIFICATION

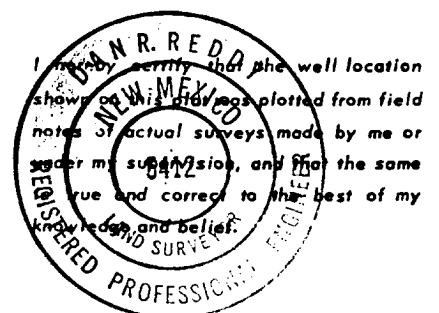
I hereby certify that the information contained herein is true and complete to the best of my knowledge and belief.

Clifton May
Name
Clifton May

Position
Regulatory Agent

Company
MYCO Industries, Inc.

Date
April 8, 1985



Date Surveyed
April 4, 1985

Registered Professional Engineer and/or Land Surveyor

Dan R. Reddy
Certificate No.
NM PE&LS NO. 5412

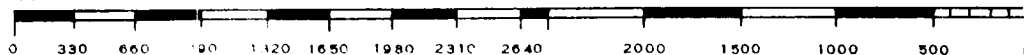
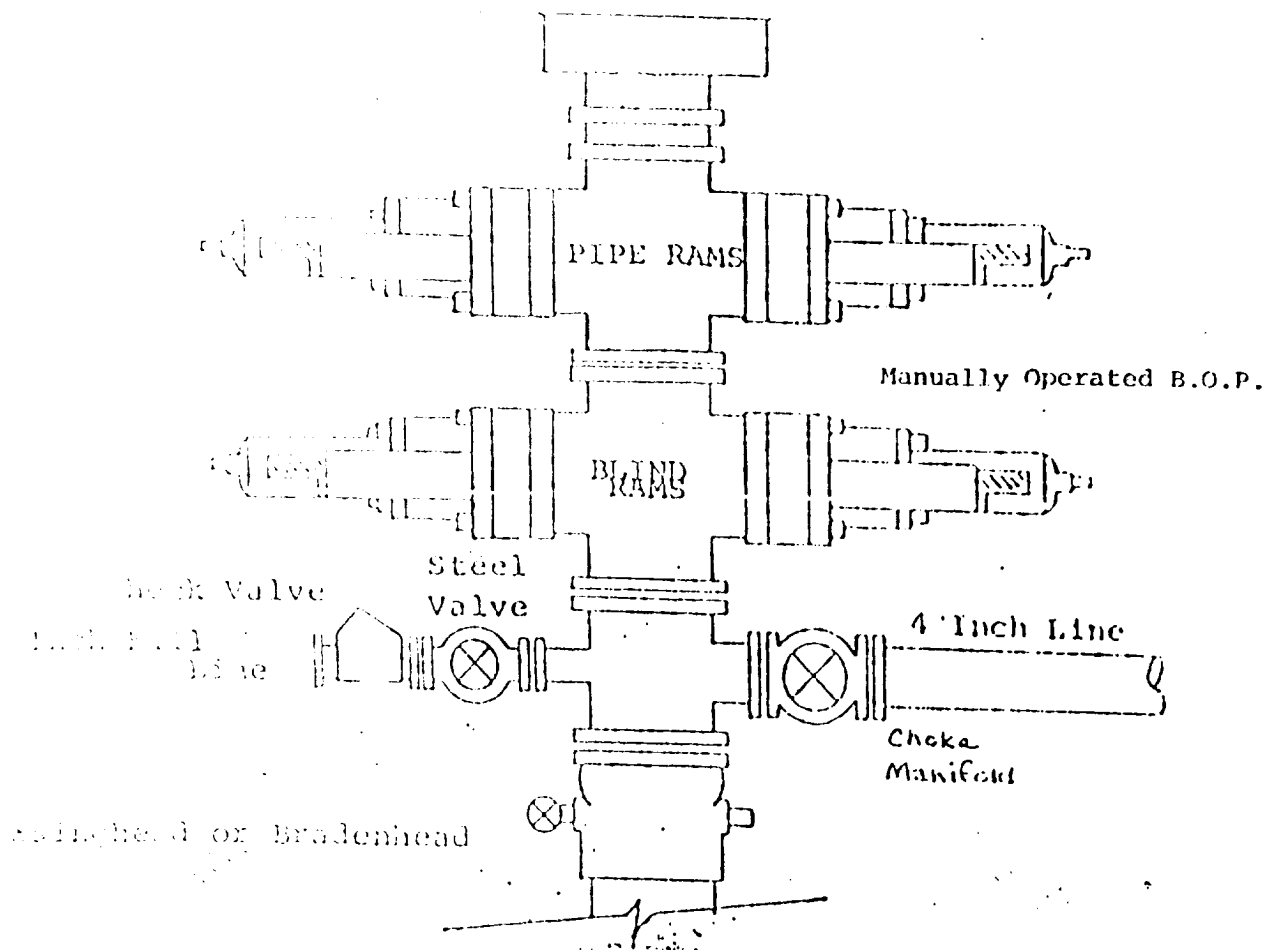


EXHIBIT B

BDP DIAGRAM

RATED 3000[#]



MYCO INDUSTRIES, INC.
Roadrunner Federal #4
2310' FNL & 990' FWL
Sec. 35-T18S-R29E
Eddy County, New Mexico

In conjunction with Form 9-331C, Application for Permit to Drill subject well, MYCO Industries, Inc. submits the following ten items of pertinent information in accordance with BLM requirements.

1. The geologic surface formation is sandy alluvium.

2. The estimated tops of geologic markers are as follows:

Base Salt	1000'
Seven Rivers	1470'
Queen	2140'
Penrose	2270'
Grayburg	2520'
Premier	2900'
San Andres	2970'
TD	3250'

3. The estimated depths at which anticipated water, oil or gas formations are expected to be encountered:

Water: Approximately 200-240'

Oil or Gas: 2560'

4. Proposed Casing Program: See Form 9-331C.

5. Pressure Control Equipment: See Form 9-331C.

6. Mud Program: See Form 9-331C.

7. Auxiliary Equipment: Kelly Cock; pit level indicators and flow sensor equipment; sub with full-opening valve on floor, drill pipe connection.

8. Testing, Logging and Coring Program:

Samples: 10' samples caught out from under surface casing to TD

DST's: As warranted

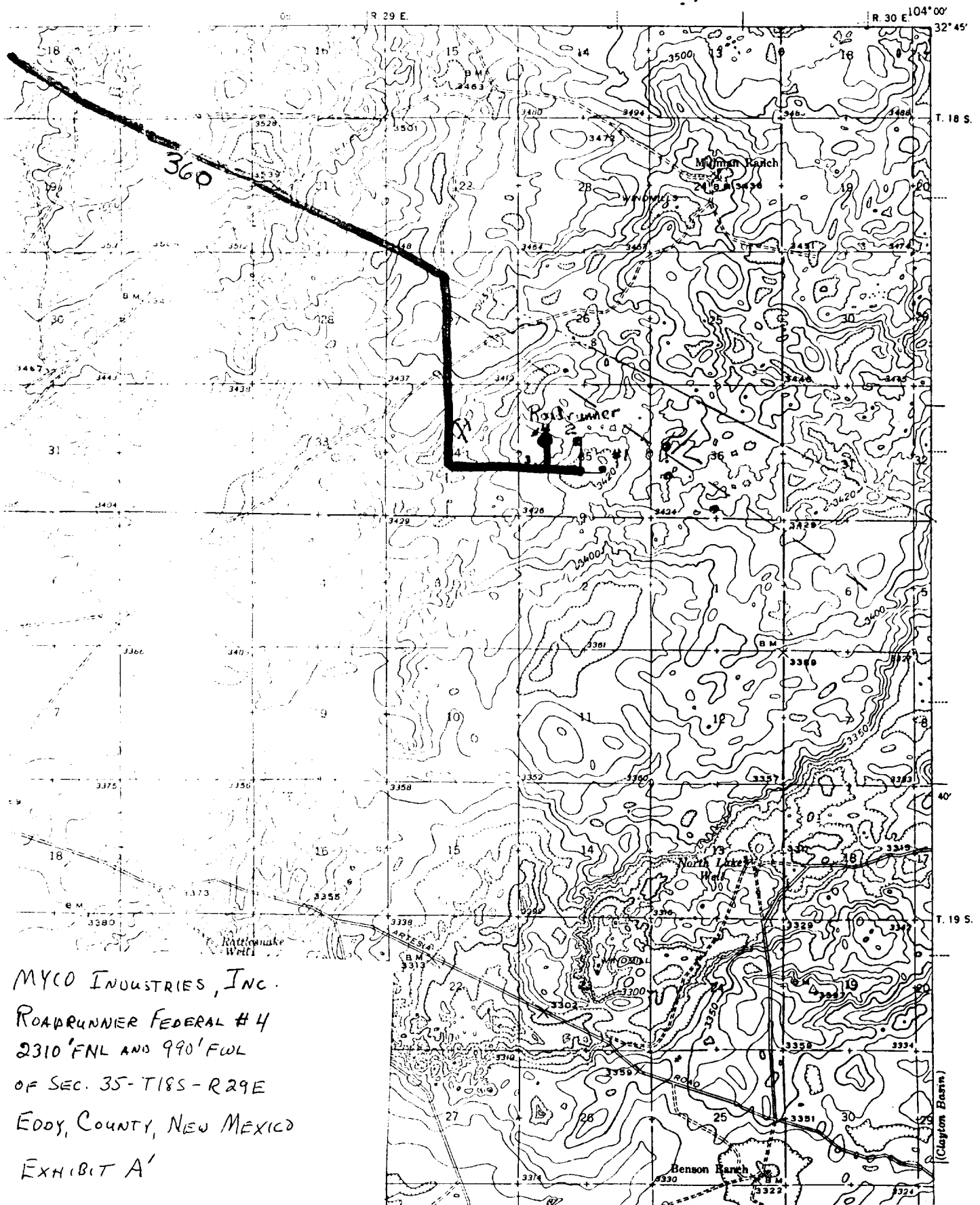
Coring: None

Logging: CNL/LDT from TD to surface casing with GR-CNL on to surface; DLL from TD to 1200'; Rxo at geologists discretion

9. No abnormal pressures or temperatures are anticipated.

10. Anticipated starting date: As soon as possible after approval.

NEW MEXICO
(EDDY COUNTY)
OIL CITY QUADRANGLE
15-MINUTE SERIES

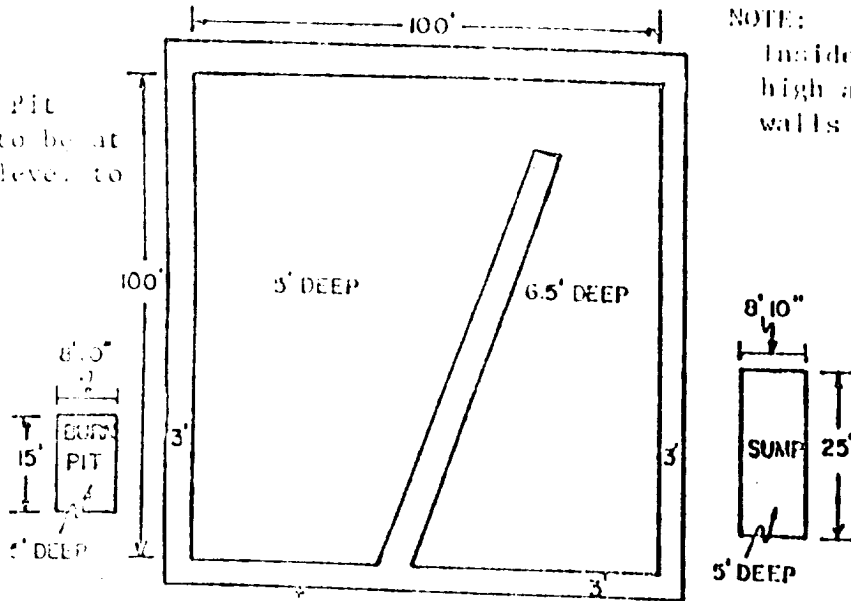


MYCO INDUSTRIES, INC.
ROADRUNNER FEDERAL #4
2310' FNL AND 990' FWL
OF SEC. 35-T18S-R29E
EDDY, COUNTY, NEW MEXICO
EXHIBIT A'

YATES PETROLEUM CORP.

Exhibit C

Reserve Pit
bottom to be at
ground level to
1 ft.



NOTE:

Inside walls must be as
high and wide as outer
walls of pit.

