

RECEIVED BY  
UNITED STATES  
DEPARTMENT OF THE INTERIOR  
BUREAU OF LAND MANAGEMENT

NEW MEXICO  
Draper ID  
88210  
SUBMIT IN T  
LICATE\*  
(Other instructions on  
reverse side)

Form approved.  
Budget Bureau No. 1004-0136  
Expires August 31, 1985  
30-015-25396

APPLICATION FOR PERMIT TO DRILL, DEEPEN, OR PLUG BACK

1a. TYPE OF WORK  
DRILL ☒ DEEPEN ☐ PLUG BACK ☐

b. TYPE OF WELL  
OIL WELL ☒ GAS WELL ☐ OTHER ☐  
SINGLE ZONE ☐ MULTIPLE ZONE ☐

2. NAME OF OPERATOR  
Elliott Oil Company

3. ADDRESS OF OPERATOR  
P. O. Box 1355, Roswell, New Mexico 88201

4. LOCATION OF WELL (Report location clearly and in accordance with any State requirements.)\*  
At surface  
990' from South, 990' from West, Sec. 31  
At proposed prod. zone  
Same

14. DISTANCE IN MILES AND DIRECTION FROM NEAREST TOWN OR POST OFFICE\*  
25 miles SE Artesia, New Mexico

10. DISTANCE FROM PROPOSED\*  
LOCATION TO NEAREST  
PROPERTY OR LEASE LINE, FT.  
(Also to nearest drlg. unit line, if any) 990'

18. DISTANCE FROM PROPOSED LOCATION\*  
TO NEAREST WELL, DRILLING, COMPLETED,  
OR APPLIED FOR, ON THIS LEASE, FT. 1050' (approx)

21. ELEVATIONS (Show whether DF, RT, GR, etc.)  
GR 3423

23. PROPOSED CASING AND CEMENTING PROGRAM

SIZE OF HOLE	SIZE OF CASING	WEIGHT PER FOOT	SETTING DEPTH	QUANTITY OF CEMENT
12 1/4"	8 5/8	23#	350'	100 SKs Circulate
7 7/8"	5 1/2	15.5#	3000 above salt	150 SKs

Plan to drill 12 1/4" hole to 350' and set 8 5/8" O.D. 23# H-40 casing with sufficient cement to circulate; then drill 7 7/8" hole to 3000' run 5 1/2" O.D. 15.5# J-55 casing and cement with sufficient cement to come up to above the base of salt. Drilling fluid Gel-brine water mud. Well to test Seven Rivers, Queen, and Grayburg. 0-300', Fresh water

IN ABOVE SPACE DESCRIBE PROPOSED PROGRAM: If proposal is to deepen or plug back, give data on present productive zone and proposed new productive zone. If proposal is to drill or deepen directionally, give pertinent data on subsurface locations and measures and true vertical depths. Give blowout preventer program, if any.

24. SIGNED \_\_\_\_\_ TITLE Regulatory Agent DATE 8/22/85

(This space for Federal or State office use)

PERMIT NO. \_\_\_\_\_ APPROVAL DATE \_\_\_\_\_

APPROVED BY \_\_\_\_\_ TITLE \_\_\_\_\_ DATE 9-10-85

CONDITIONS OF APPROVAL, IF ANY:

\*See Instructions On Reverse Side

Title 18 U.S.C. Section 1001, makes it a crime for any person knowingly and willfully to make to any department or agency of the United States any false, fictitious or fraudulent statements or representations as to any matter within its jurisdiction.



APPROVAL SUBJECT TO  
GENERAL REQUIREMENTS AND  
SPECIAL STIPULATIONS

ATTACHED

/ MEXICO OIL CONSERVATION COMMISSION  
WELL LOCATION AND ACREAGE DEDICATION PLAT

Form C-102  
Supersedes C-128  
Effective 1-1-65

All distances must be from the outer boundaries of the Section.

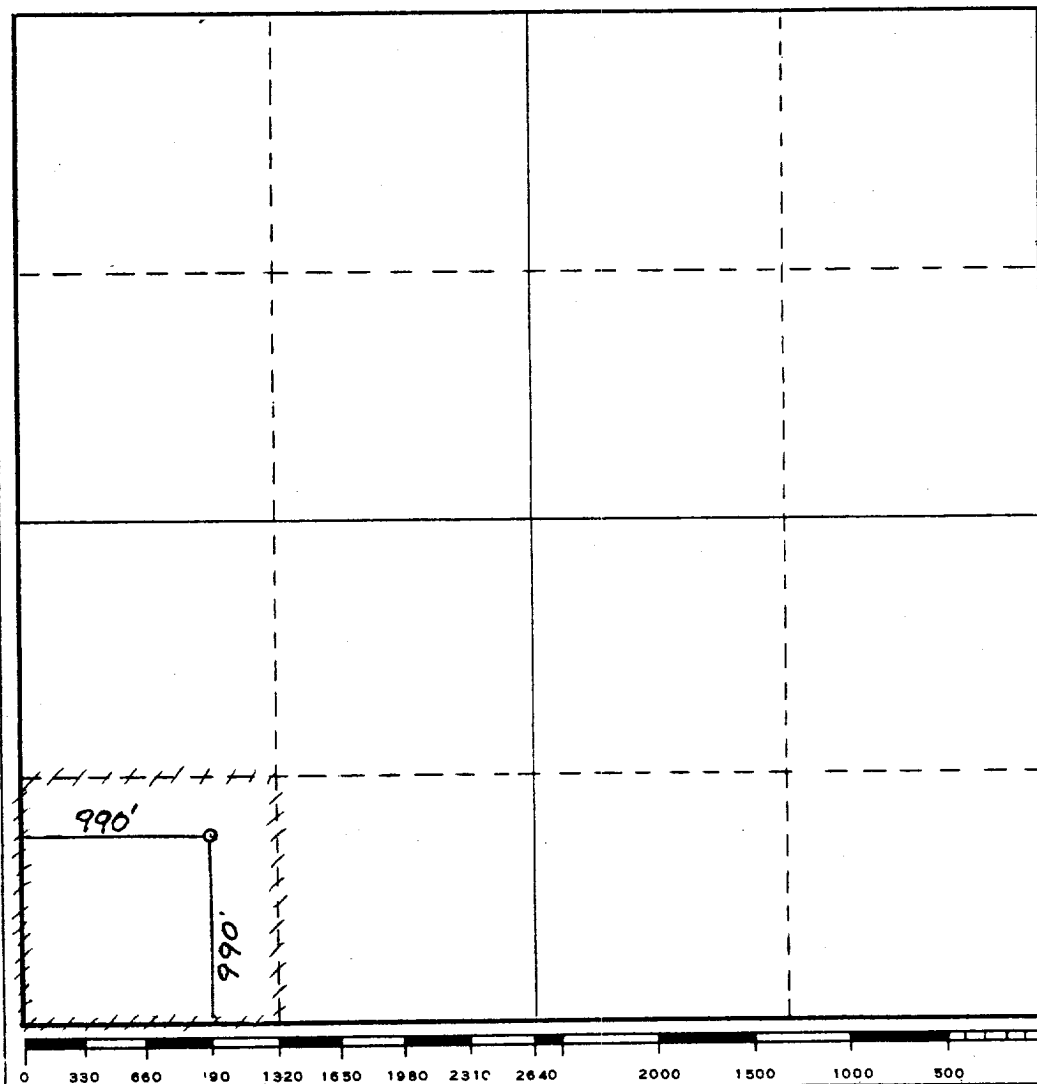
Operator <b>ELLIOTT OIL COMPANY</b>			Lease <b>EM Elliott Federal</b>		Well No.
Unit Letter <b>M</b>	Section <b>31</b>	Township <b>18 South</b>	Range <b>30 East</b>	County <b>Eddy</b>	
Actual Footage Location of Well: <b>990</b> feet from the <b>South</b> line and <b>990</b> feet from the <b>West</b> line					
Ground Level Elev. <b>3423.</b>	Producing Formation <b>Queen</b>		Pool <b>Turkey Track</b>	Dedicated Acreage: <b>40</b> Acres	

1. Outline the acreage dedicated to the subject well by colored pencil or hachure marks on the plat below.
2. If more than one lease is dedicated to the well, outline each and identify the ownership thereof (both as to working interest and royalty).
3. If more than one lease of different ownership is dedicated to the well, have the interests of all owners been consolidated by communitization, unitization, force-pooling, etc?

☐ Yes    ☐ No    If answer is "yes," type of consolidation \_\_\_\_\_

If answer is "no," list the owners and tract descriptions which have actually been consolidated. (Use reverse side of this form if necessary.) \_\_\_\_\_

No allowable will be assigned to the well until all interests have been consolidated (by communitization, unitization, forced-pooling, or otherwise) or until a non-standard unit, eliminating such interests, has been approved by the Commission.



CERTIFICATION

I hereby certify that the information contained herein is true and complete to the best of my knowledge and belief.

Name

**Stephen L. Elliott**

Position

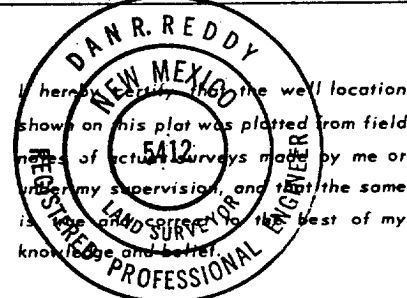
**Regulatory Agent**

Company

**Elliott Oil Company**

Date

**8/22/85**



Date Surveyed

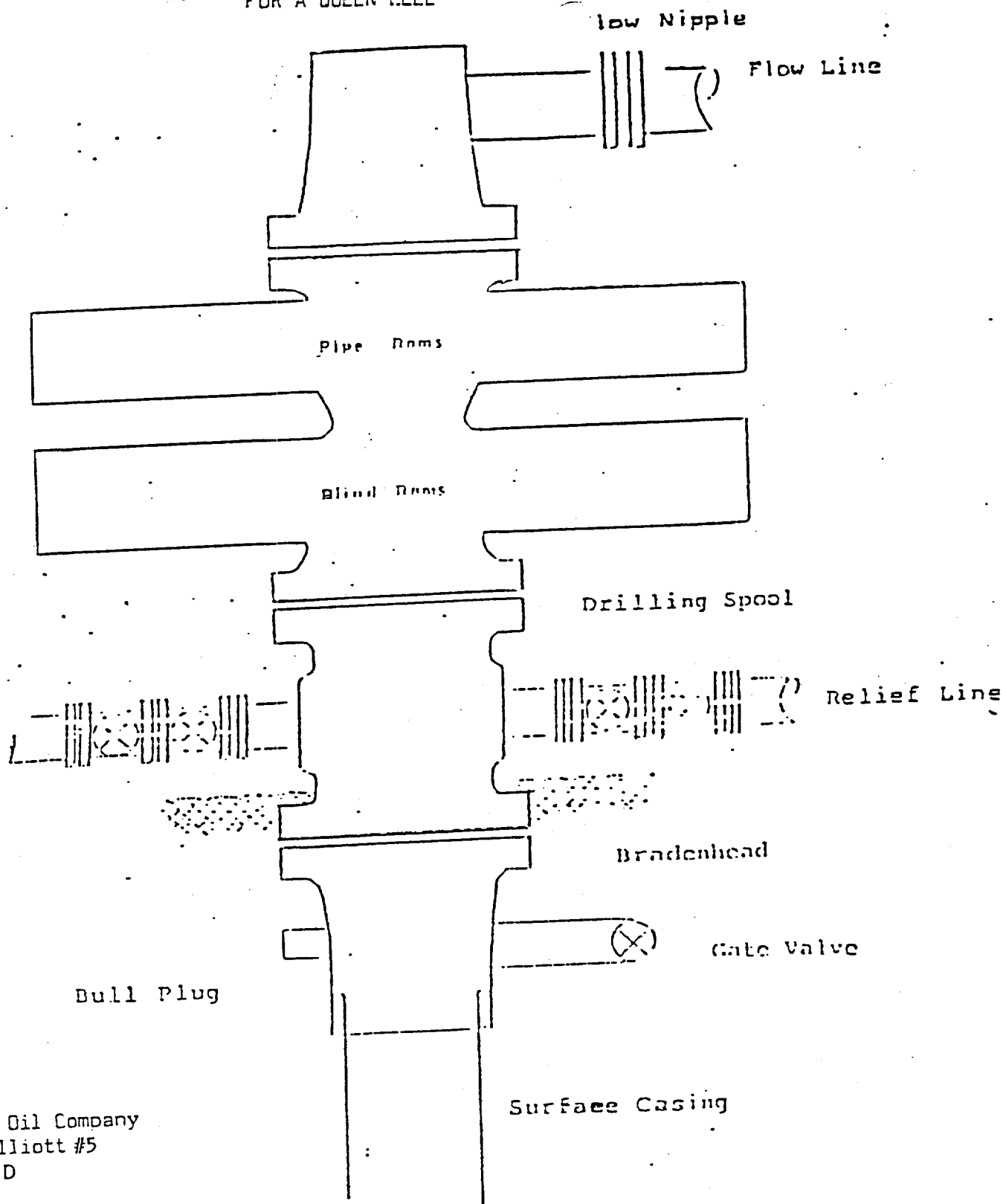
**August 8, 1985**

Registered Professional Engineer  
and/or Land Surveyor

Certificate No.

**NM PE&LS NO. 5412**

FOR A QUEEN WELL



Elliott Oil Company  
E. M. Elliott #5  
Exhibit D

Series 900 Double Gate ROP, rated  
at 3000 psi Working Pressure

Exhibit B

OPERATIONS PLAN

E. M. Elliott #5 Well  
T-18S, R-30E  
Sec. 31: 990' FSL & 990' FWL  
Eddy County, New Mexico

EXPECTED FORMATION TOPS:

Top Salt	350'
Base Salt	1150'
Yates	1350'
Seven Rivers	1620'
Queen	2500'

LOGGING PROGRAM: CDL - CN - GR  
DLL - GR

Catch Samples every 10' from Base of Salt to total depth.

CASING PROGRAM:

<u>Hole Size</u>	<u>Casing Size</u>	<u>Wt./Ft.</u>	<u>Setting Depth</u>	<u>Grade &amp; Condition</u>	<u>Cementing Program</u>
12 1/4"	8 5/8"	23#	350'	H-40	<u>Surface</u> - Cement 8 5/8" surface casing @ 400'. Circulate cement.
7 7/8"	5 1/2"	15.5#	3000'	J-55	Cement to cover base of salt to total depth.

WELLHEAD EQUIPMENT:

Casing Head - 8 5/8" x 10" 600 series  
Tubing Head - 6" x 10" 600 series

Elliott Oil Company

Office	622-5840
Frank Elliott	623-8807
Stephen Elliott	625-2916
Tom Elliott	624-1189

Engineer:

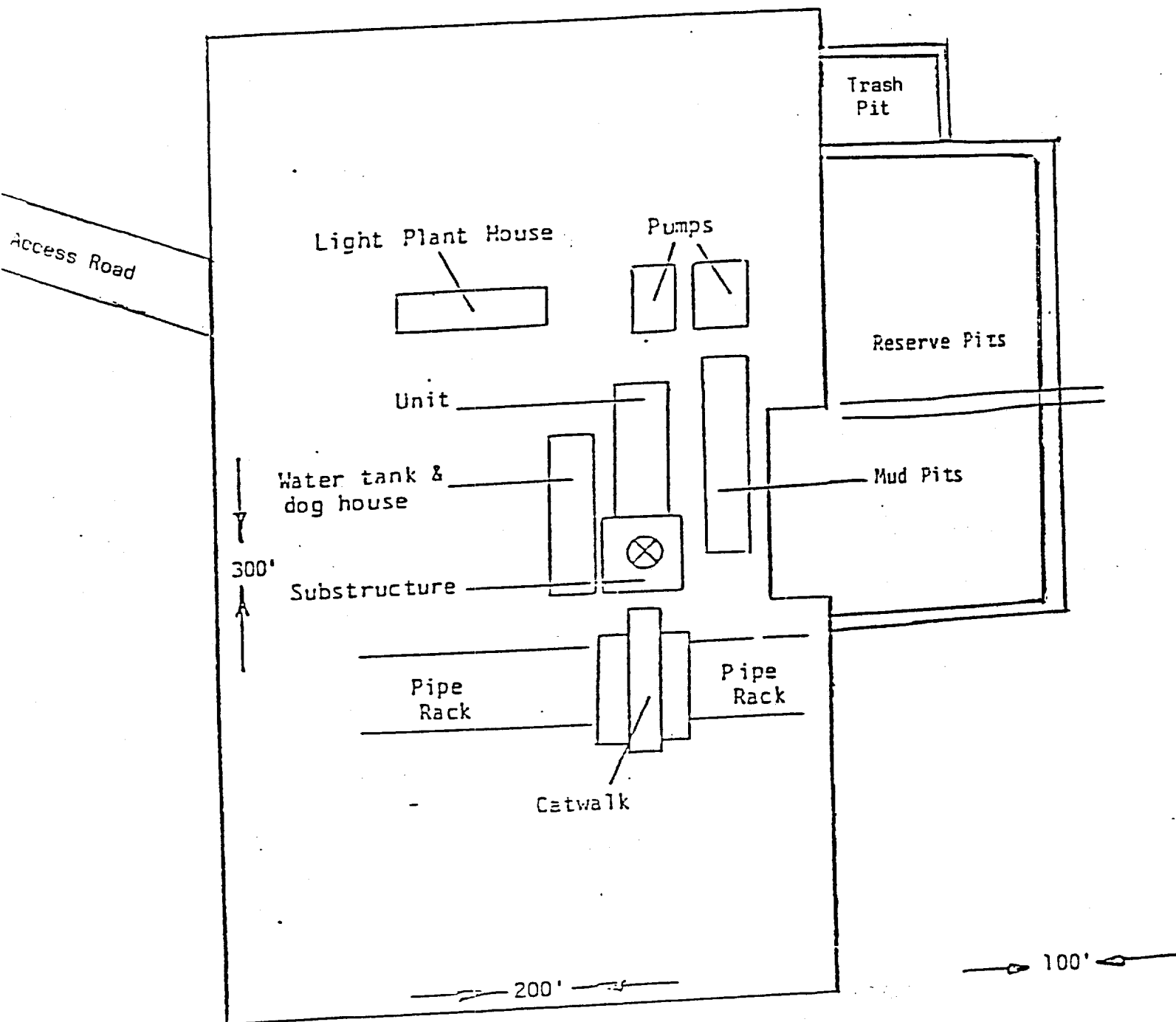
Chuck Morgan - Office	746-6520
Residence	748-9814

# OIL CITY QUADRANGLE 15-MINUTE SERIES

EXHIBIT E



TYPICAL LOCATION  
FOR  
A QUEEN WELL



ELLIOTT OIL COMPANY  
E. M. Elliott #5  
Exhibit C