

UNITED STATES  
DEPARTMENT OF THE INTERIOR  
GEOLOGICAL SURVEY

## APPLICATION FOR PERMIT TO DRILL, DEEPEN, OR PLUG BACK

## 1a. TYPE OF WORK

DRILL ☒DEEPEN ☐PLUG BACK ☐

## b. TYPE OF WELL

OIL  
WELL ☒GAS  
WELL ☐OTHER ☐SINGLE  
ZONE ☐MULTIPLE  
ZONE ☐

## 2. NAME OF OPERATOR

Fred Pool Drilling, Inc. ✓

## 3. ADDRESS OF OPERATOR

P. O. Box 1393, Roswell, NM 88201

## 4. LOCATION OF WELL (Report location clearly and in accordance with any State regulations.)

At surface

990' FSL &amp; 990' FWL SW/4 SW/4

At proposed prod. zone

## 14. DISTANCE IN MILES AND DIRECTION FROM NEAREST TOWN OR POST OFFICE\*

11 air miles east-southeast of Artesia NM

## 15. DISTANCE FROM PROPOSED\*

LOCATION TO NEAREST  
PROPERTY OR LEASE LINE, FT.  
(Also to nearest drlg. unit line, if any)

990'

## 16. NO. OF ACRES IN LEASE

480

## 18. DISTANCE FROM PROPOSED\*

TO NEAREST WELL, DRILLING, COMPLETED,  
OR APPLIED FOR, ON THIS LEASE, FT.

990'

## 19. PROPOSED DEPTH

SA 2500

17. NO. OF ACRES ASSIGNED  
TO THIS WELL

40

## 20. ROTARY OR CABLE TOOLS

Cable tools

## 21. ELEVATIONS (Show whether DF, RT, GR, etc.)

3574 GR

## 22. APPROX. DATE WORK WILL START\*

February 6, 1986

## 23.

## PROPOSED CASING AND CEMENTING PROGRAM

SIZE OF HOLE	SIZE OF CASING	WEIGHT PER FOOT	SETTING DEPTH	QUANTITY OF CEMENT
12 1/4	8 5/8	24#	350'	Sufficient to circulate
7 7/8	5 1/2 - 4 1/2	15.5# - 9.5#	2500'	650 sx.

Attached are:

1. Well Location & Acreage Dedication Plat
2. Supplemental Drilling Data
3. Surface Use Plan

IN ABOVE SPACE DESCRIBE PROPOSED PROGRAM: If proposal is to deepen or plug back, give data on present productive zone and proposed new productive zone. If proposal is to drill or deepen directionally, give pertinent data on subsurface locations and measured and true vertical depths. Give blowout prevention program, if any.

24.

SIGNED

TITLE President

DATE 1-6-86

(This space for Federal or State office use)

PERMIT NO.

APPROVAL DATE

APPROVED BY

TITLE

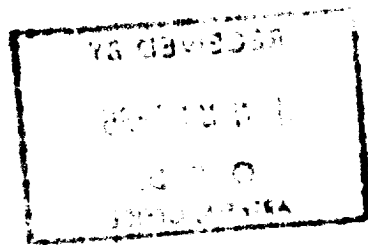
DATE

CONDITIONS OF APPROVAL, IF ANY:

1-23-86

\*See Instructions On Reverse Side

APPROVAL SUBJECT TO  
GENERAL REQUIREMENTS AND  
SPECIAL STIPULATIONS  
ATTACHED



**NEW MEXICO OIL CONSERVATION COMMISSION  
WELL LOCATION AND ACREAGE DEDICATION PLAT**

Form C-102  
Supersedes C-128  
Effective 1-1-65

All distances must be from the outer boundaries of the Section.

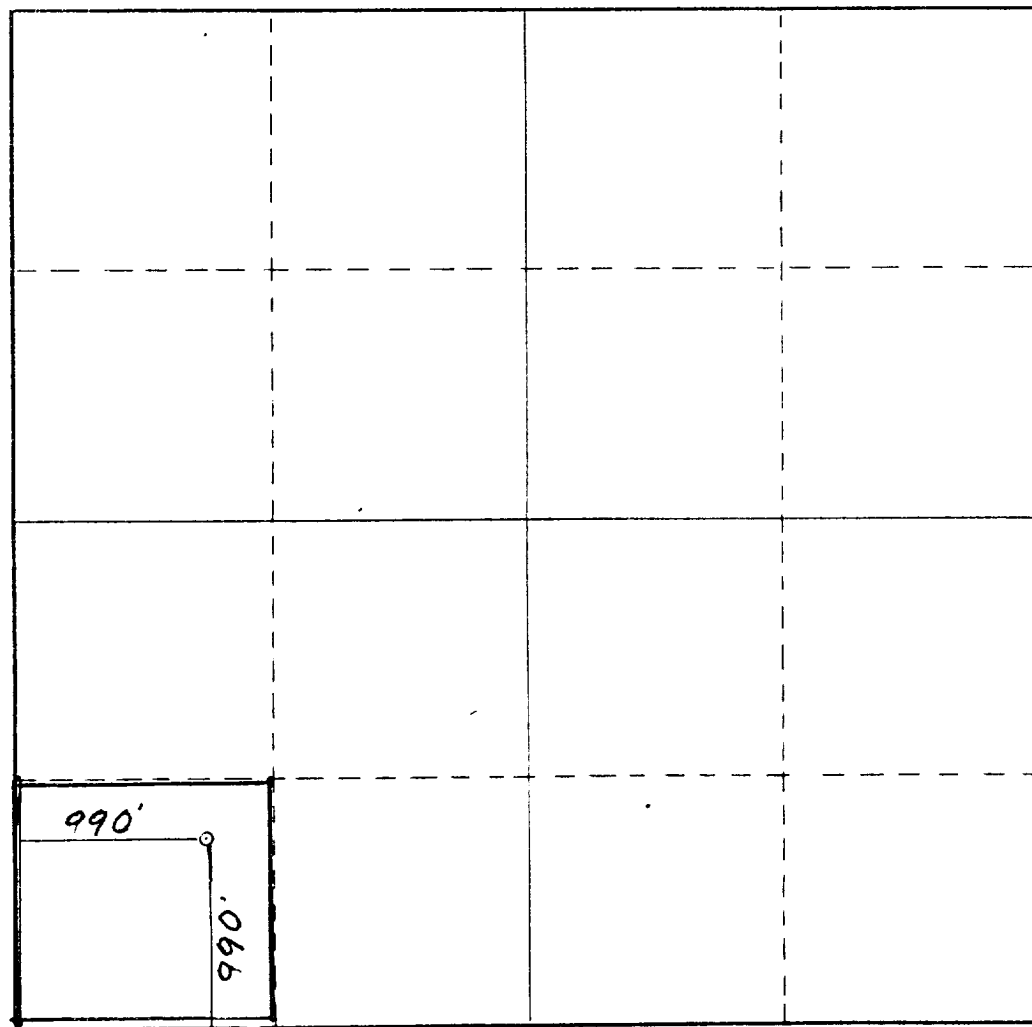
Operator <b>FRED POOL DRILLING, INC.</b>			Lease <b>Comstock Federal</b>		Well No. <b>3</b>
Unit Letter <b>M</b>	Section <b>12</b>	Township <b>18 South</b>	Range <b>27 East</b>	County <b>Eddy</b>	
Actual Footage Location of Well: <b>990</b> feet from the <b>South</b> line and <b>990</b> feet from the <b>West</b> line					
Ground Level Elev. <b>3574.</b>	Producing Formation <b>S A - Penrose</b>		Pool <b>Artesia On Gb SA</b>		Dedicated Acreage: <b>40</b> Acres

1. Outline the acreage dedicated to the subject well by colored pencil or hachure marks on the plat below.
2. If more than one lease is dedicated to the well, outline each and identify the ownership thereof (both as to working interest and royalty).
3. If more than one lease of different ownership is dedicated to the well, have the interests of all owners been consolidated by communitization, unitization, force-pooling, etc?

☐ Yes    ☐ No    If answer is "yes," type of consolidation \_\_\_\_\_

If answer is "no," list the owners and tract descriptions which have actually been consolidated. (Use reverse side of this form if necessary.) \_\_\_\_\_

No allowable will be assigned to the well until all interests have been consolidated (by communitization, unitization, forced-pooling, or otherwise) or until a non-standard unit, eliminating such interests, has been approved by the Commission.



**CERTIFICATION**

I hereby certify that the information contained herein is true and complete to the best of my knowledge and belief.

Name

**Fred Pool, Jr.**

Position

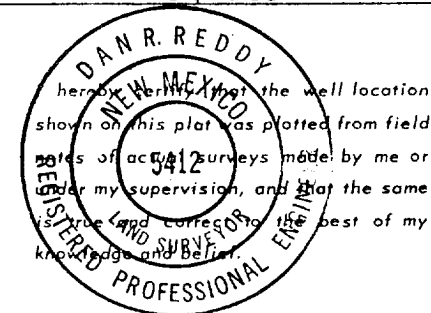
**President**

Company

**Fred Pool Drilling, Inc.**

Date

**Nov. 15, 1985**



Date Surveyed

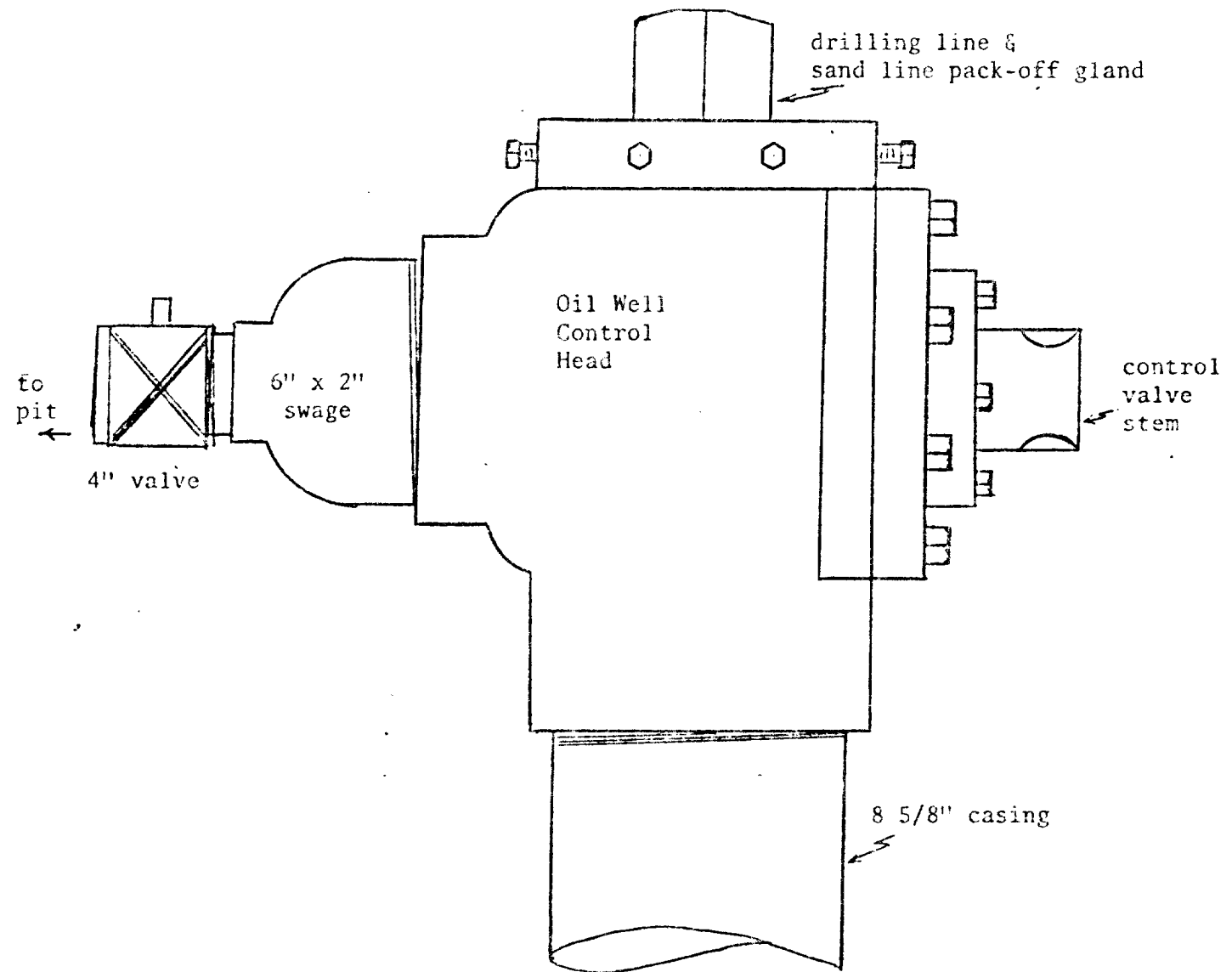
**November 9, 1985**

Registered Professional Engineer  
and/or Land Surveyor

*Dan R. Reddy*  
Certificate No.

**NM PE&LS NO. 5412**

SUPPLEMENTAL DRILLING DATA



Cable Tool Control Head

## SUPPLEMENTAL DRILLING DATA

FRED POOL DRILLING, INC.  
WELL #3 COMSTOCK FEDERAL  
SW $\frac{1}{4}$ SW $\frac{1}{4}$  SEC. 12-18S-27E  
EDDY COUNTY, NEW MEXICO

1. SURFACE FORMATION: Artesia Group of Permian Age. (Elev. 3574 feet).

2. ESTIMATED TOPS OF GEOLOGIC MARKERS:

Yates	275'	Grayburg	1650'
Seven Rivers	475'	San Andres	2050'
Queen	1225'	Lovington Sand	2200'

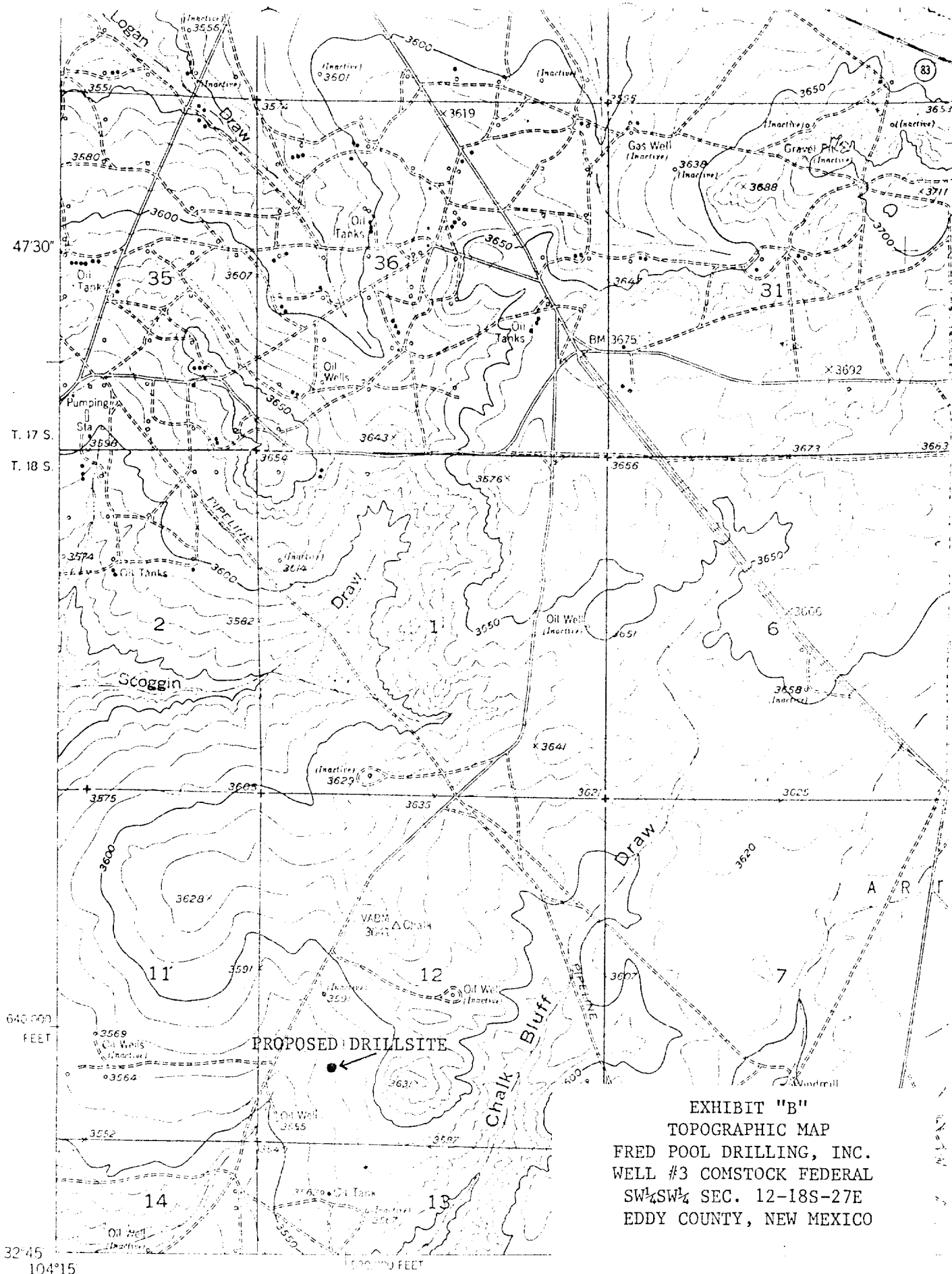
3. ANTICIPATED POROSITY ZONES:

Water	-	Above 300'
Oil	-	1500' - 2300'

4. CASING DESIGN:

Size	Interval	Weight	Grade	Joint
8 5/8"	0 - 350'	24.0#	J-55	STC
4 1/2" - 5 1/2"	0 - 2500'	9.5# - 15.5#	J-55	STC

5. SURFACE CONTROL EQUIPMENT: A control head BOP will be used.
6. AUXILIARY EQUIPMENT: None considered necessary on this shallow development well.
7. TESTING, LOGGING AND CORING PROGRAMS: No coring or DST's are planned. Electric logs will include a Compensated Neutron Log with Gamma Ray.
8. ABNORMAL PRESSURES, TEMPERATURES OR GASES: None anticipated.
9. ANTICIPATED STARTING DATE: It is planned that operations will commence about February 6, 1986. Duration of drilling, completion and testing operations should be one to five weeks.



Mapped, edited, and published by the Geological Survey  
Control by USGS and USC&GS

Culture and drainage in part compiled from aerial photographs  
taken 1946. Topography by planetable surveys 1955

Base map projection: 1927 North American datum

12°

EXHIBIT "D"  
SKETCH OF WELL PAD  
FRED POOL DRILLING, INC.  
WELL #3 COMSTOCK FEDERAL  
SW $\frac{1}{4}$ SW $\frac{1}{4}$  SEC. 12-18S-27E  
EDDY COUNTY, NEW MEXICO

