

Form 3160-3  
(November 1983)  
(formerly 9-331C)

NM OIL CONS. COMMISSION  
SUBMIT IN TRIPLICATE\*  
(Other instructions on reverse side)

Form approved.  
Budget Bureau No. 1004-0136  
Expires August 31, 1985 *C/SF*

UNITED STATES  
DEPARTMENT OF THE INTERIOR  
BUREAU OF LAND MANAGEMENT

APPLICATION FOR PERMIT TO DRILL, DEEPEN, OR PLUG BACK

1A. TYPE OF WORK

DRILL ☒

DEEPEN ☐

PLUG BACK ☐

B. TYPE OF WELL

OIL WELL ☒

GAS WELL ☐

OTHER ☐

SINGLE ZONE ☒

MULTIPLE ZONE ☐

2. NAME OF OPERATOR

Hondo Oil and Gas Company

3. ADDRESS OF OPERATOR

P.O. Box 1610 - Midland, Texas 79702

4. LOCATION OF WELL (Report location clearly and in accordance with any State requirements.)\*

At surface

560 FSL & 960 FWL (Unit Letter M)

At proposed prod. zone

Same as above

14. DISTANCE IN MILES AND DIRECTION FROM NEAREST TOWN OR POST OFFICE\*

7 miles Southeast of Loco Hills, New Mexico

15. DISTANCE FROM PROPOSED\* LOCATION TO NEAREST PROPERTY OR LEASE LINE, FT.

(Also to nearest drlg. unit line, if any)

360

18. DISTANCE FROM PROPOSED LOCATION\* TO NEAREST WELL, DRILLING, COMPLETED, OR APPLIED FOR, ON THIS LEASE, FT.

1748

16. NO. OF ACRES IN LEASE

240

19. PROPOSED DEPTH

8700'

17. NO. OF ACRES ASSIGNED TO THIS WELL

40

20. ROTARY OR CABLE TOOLS

Rotary

21. ELEVATIONS (Show whether DF, RT, GR, etc.)

GR 3705.0

22. APPROX. DATE WORK WILL START\*  
As soon as permit is approved

23.

PROPOSED CASING AND CEMENTING PROGRAM

SIZE OF HOLE	SIZE OF CASING	WEIGHT PER FOOT	SETTING DEPTH	QUANTITY OF CEMENT
17-1/2"	13-3/8"	54.5# K-55	680'	650 sx Circ
11"	8-5/8"	24# K-55	2150'	800 sx Circ
7-7/8"	5-1/2"	17# K-55	8650'	1700 sx TOC @ 1500'
		17# N-80		

Propose to drill a Tamano (Bone Springs) development well and test for commercial production.

Blowout Preventer Program attached.

IN ABOVE SPACE DESCRIBE PROPOSED PROGRAM: If proposal is to deepen or plug back, give data on present productive zone and proposed new productive zone. If proposal is to drill or deepen directionally, give pertinent data on subsurface locations and measured and true vertical depths. Give blowout preventer program, if any.

24.

SIGNED Ken G. Gosnell TITLE Engr. Tech. Spec. DATE 9-18-86

(This space for Federal or State office use)

PERMIT NO. Original: 1004-0136-1 APPROVAL DATE 9-23-86

APPROVED BY Original: 1004-0136-1 TITLE Engr. Tech. Spec. DATE 9-23-86

APPROVAL SUBJECT TO  
GENERAL REQUIREMENTS AND  
SPECIAL STIPULATIONS  
ATTACHED

\*See Instructions On Reverse Side

Title 18 U.S.C. Section 1001, makes it a crime for any person knowingly and willfully to make to any department or agency of the United States any false, fictitious or fraudulent statements or representations as to any matter within its jurisdiction.

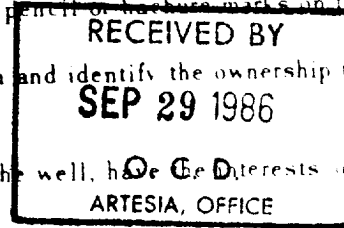
NEW MEXICO OIL CONSERVATION COMMISSION  
WELL LOCATION AND ACREAGE DEDICATION PLAT

Form O-10,  
Supersedes O-12H  
Effective 1-1-65

All distances must be from the outer boundaries of the Section

Operator <b>HONDO OIL &amp; GAS COMPANY</b>		Lease <b>WILMAR FEDERAL</b>		Section <b>6</b>
Unit Letter <b>M</b>	Section <b>4</b>	Township <b>18 SOUTH</b>	Range <b>31 EAST</b>	County <b>EDDY</b>
Actual Footage Location of Well: 560 feet from the <b>SOUTH</b> line and 960 feet from the <b>WEST</b> line				
Ground Level Elev. <b>3705.0'</b>	Producing Formation <b>Bone Springs</b>	Pool <b>Tamayo Und N Shugart 65</b>		Estimated Acreage <b>40</b>

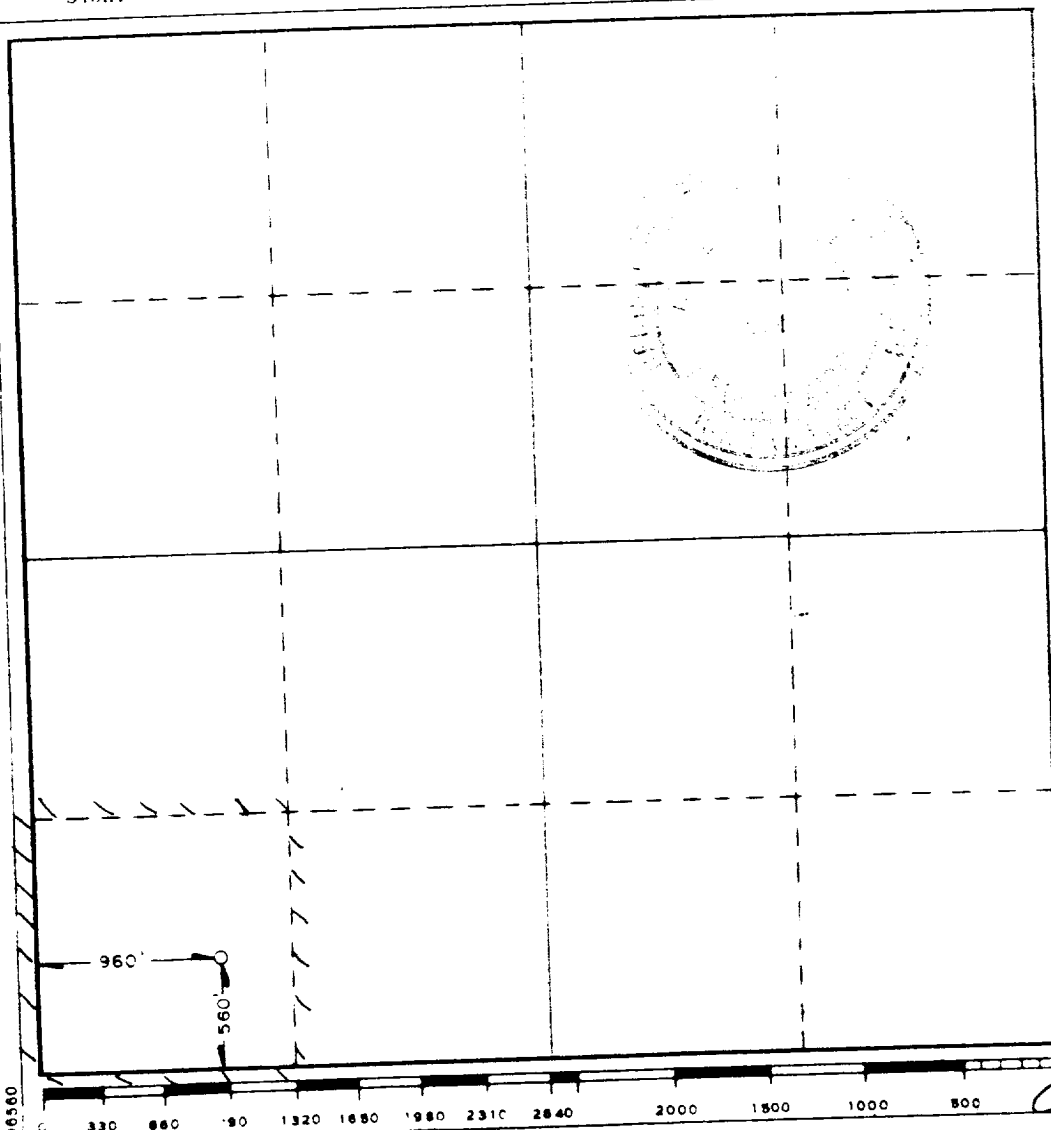
- Outline the acreage dedicated to the subject well by colored pencil or hardware marks on the plat below.
- If more than one lease is dedicated to the well, outline each and identify the ownership thereof (both as to working interest and royalty).
- If more than one lease of different ownership is dedicated to the well, have the interests of all owners been consolidated by communitization, unitization, force-pooling, etc?



☐ Yes ☐ No If answer is "yes," type of consolidation \_\_\_\_\_

If answer is "no," list the owners and tract descriptions which have actually been consolidated (Use reverse side of this form if necessary.) \_\_\_\_\_

No allowable will be assigned to the well until all interests have been consolidated (by communitization, unitization, forced-pooling, or otherwise) or until a non-standard unit, eliminating such interests, has been approved by the Commission.



CERTIFICATION

I hereby certify that the information contained herein is true and complete to the best of my knowledge and belief.

*Kenn W. Gosnell*

Engr. Tech. Spec.

Hondo Oil and Gas Company

9-18-86

I hereby certify that the well location shown on this plat was plotted from field notes of actual surveys made by me or under my supervision, and that the same is true and correct to the best of my knowledge and belief.

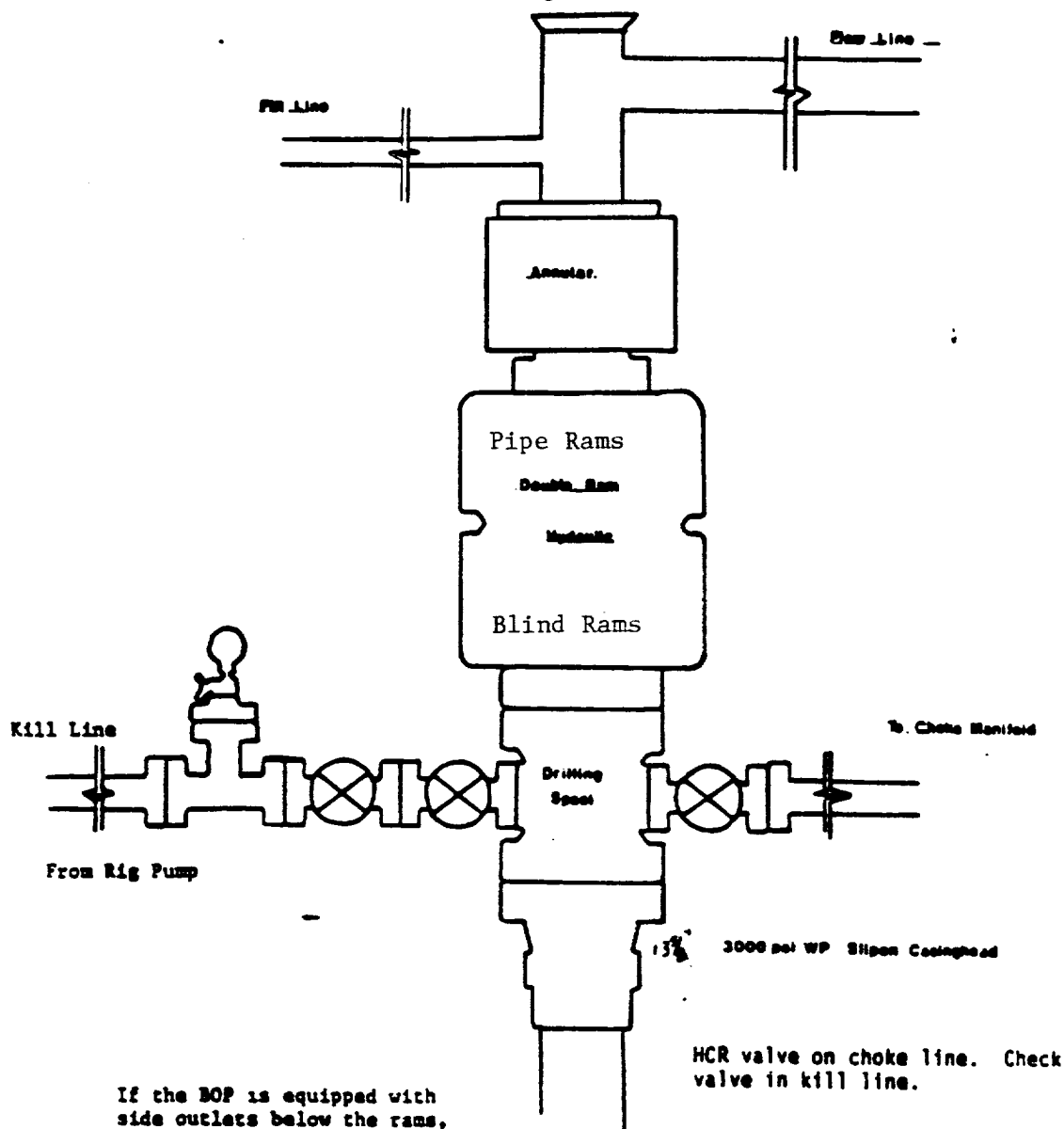
Date Surveyed  
JANUARY 29, 1986

Registered Professional Engineer  
and Land Surveyor

*John W. West*

Certificate No. **JOHN W. WEST** 676  
**RONALD J. EIDSON** 3239

Hondo Oil and Gas Co.  
3000 psi WP BOP Stack  
SRA



Hondo Oil and Gas Company  
Blow Out Preventer Program

Lease Name Wilmar Federal

Well No. 6

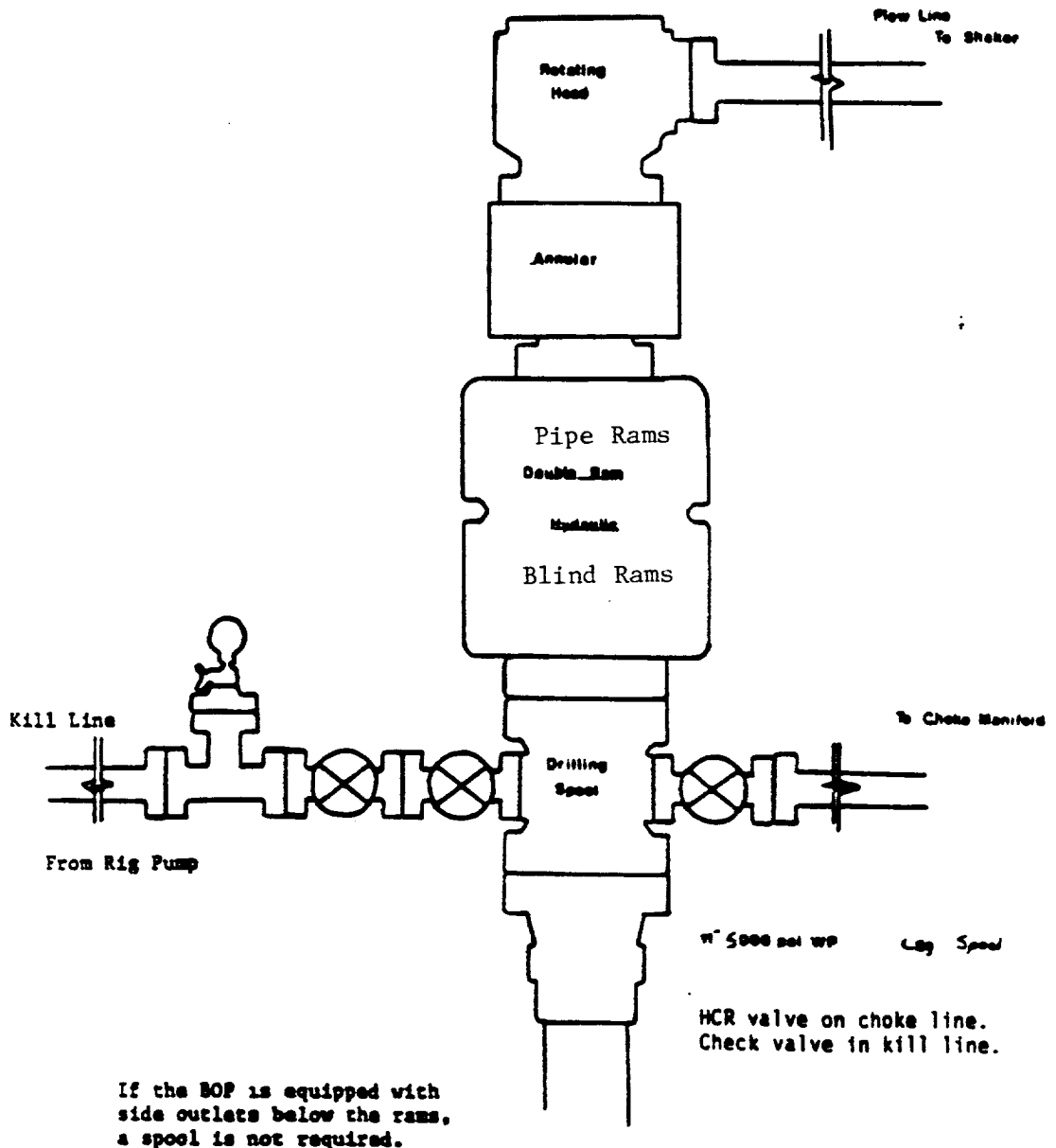
Location 560 FSL & 960 FWL Sec 4,  
T-18-S, R-31-E, Eddy County, NM

BOP to be tested when installed on well and will be maintained in good working condition during drilling. All wellhead fittings to be of sufficient pressure to operate in a safe manner.

MEZ 1/85

c

Hondo Oil and Gas Company  
5000 psi WP BOP Stack  
SR<sub>2</sub> AB



Hondo Oil and Gas Company

Blow Out Preventer Program

Lease Name Wilmar Federal

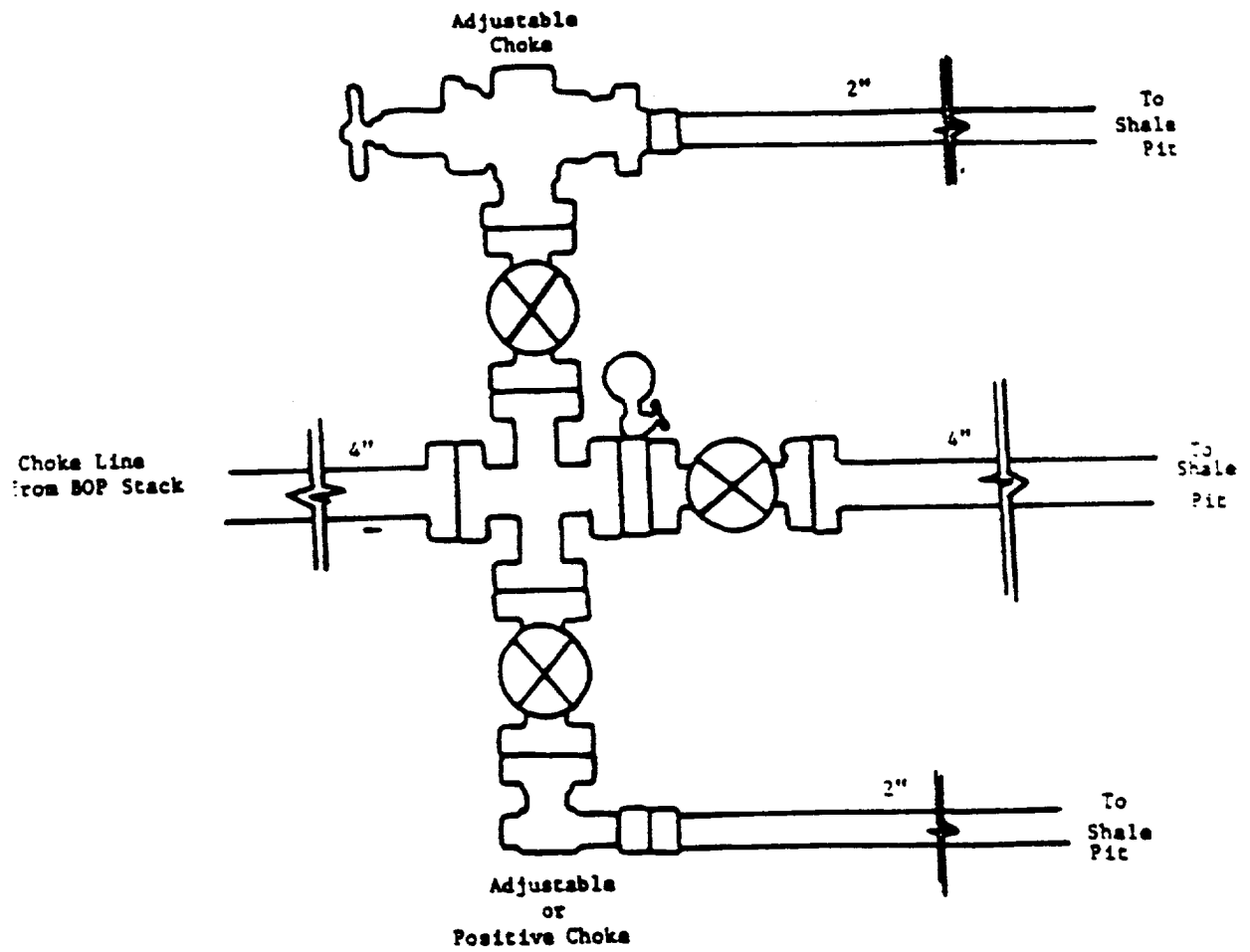
Well No. 6

Location 560 FSL & 960 FWL Sec. 4,  
T-18-S, R-31-E, Eddy Co., NM

BOP to be tested when installed on well and will be maintained in good working condition during drilling. All wellhead fittings to be of sufficient pressure to operate in a safe manner.

Hondo Oil & Gas Co.

5000psi WP Choke Manifold



To supplement USGS Form 3160-3 " Application for Permit to Drill, Deepen or Plugback", the following additional information is submitted to comply with USGS Order NTL-6.

Operator: Hondo Oil and Gas Company

Lease & Well No: Wilmar Federal #6

Location: Unit Letter M

Section 4 - 18S - 31E

Eddy County, New Mexico

Lease, New Mexico LC-029389-B

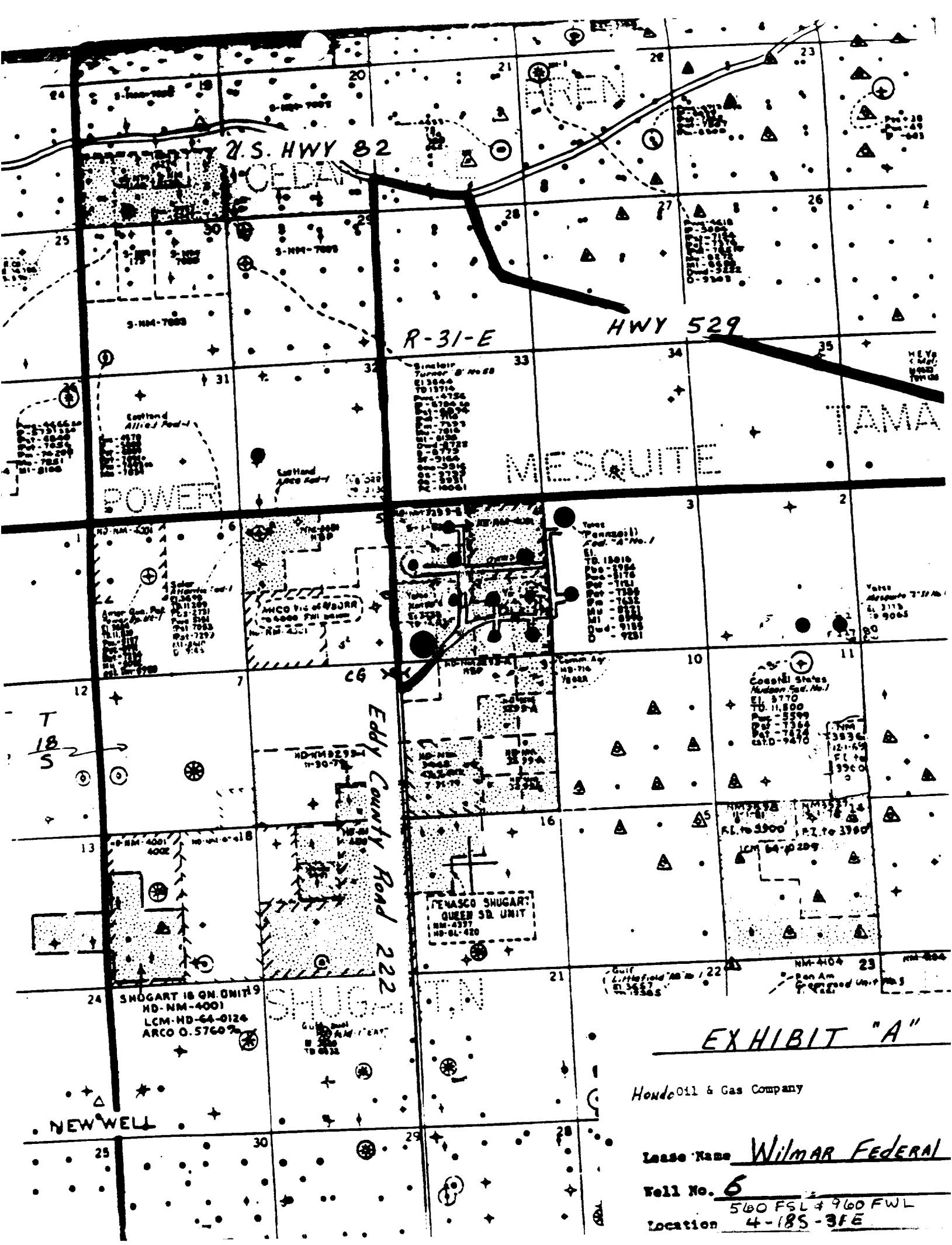
Development well       X       Exploratory well                     

1. See Well Location and Acreage Dedication Plat Form C-102.
2. See Form 3160-3 for elevation above sea level of unprepared location.
3. The geologic name of the surface formation is: Querecho Plains Aeolian material with loose sandy loams and commonly harbor calcareous gravels.
4. The type of drilling tools and associated equipment to be utilized will be: Rotary
5. The proposed drilling depth will be       8650'      .
6. The estimated tops of important geologic markers are:

Yates	2100'	San Andres	4010'
Queen	3160'	Bone Springs	5200'
7. The estimated depths at which anticipated water, oil, gas or other mineral bearing formations are expected to be encountered are:

Bone Springs 8200'      Oil

8. The proposed casing program including the size, grade and weight-per-foot of each string has been indicated on Form 3160-3. All strings of casing will be: New       X       Used                     .
9. See Form 3160-3 for amount of cement.



# EXHIBIT "A"

Honda Oil & Gas Company

Lease Name WILMAR FEDERAL  
Well No. 6  
Location 560 FSL & 960 FWL  
4-185-3FE

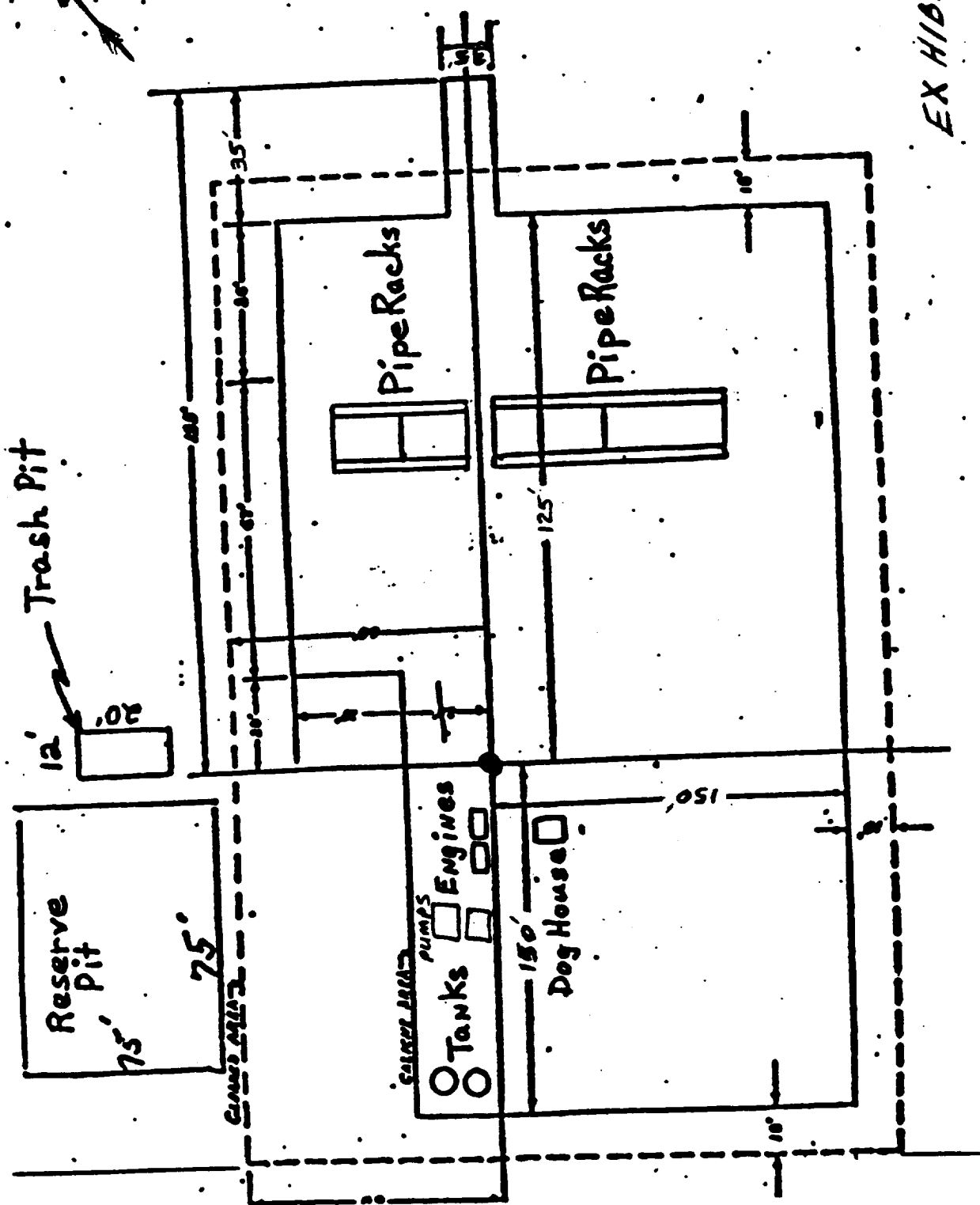


EXHIBIT "D"

Hando Oil and Gas Company  
Lease Name Wilmar Federal  
Well No. # 6  
Location 560 FSL 1960 F.W.L. Sec 4  
LB-S, 31-E, Eddy Co., NM