

MEXICO OIL CONSERVATION COMMISS.
WELL LOCATION AND ACREAGE DEDICATION PLAT

101386 Form C-102
Supersedes C-128
Effective 1-1-83

All distances must be from the outer boundaries of the Section.

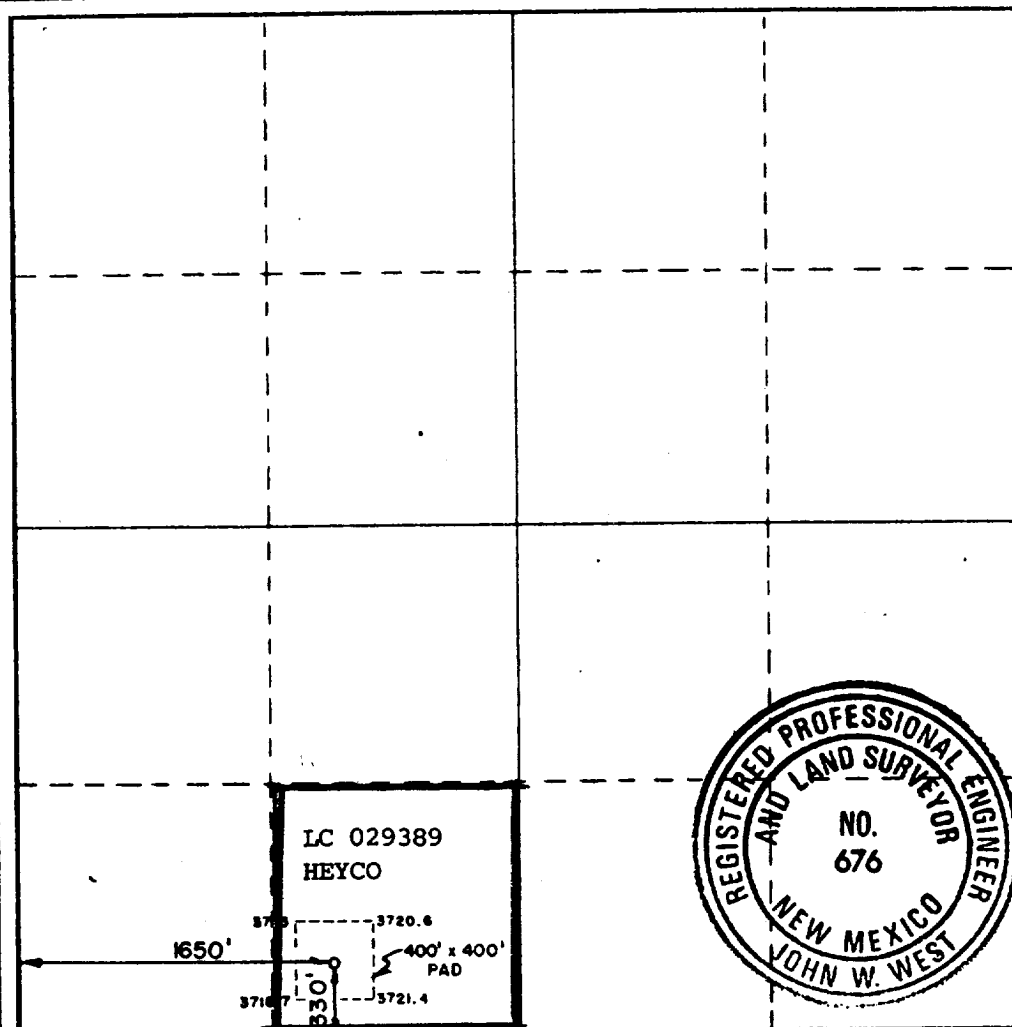
Operator Harvey E. Yates Co.			Lease Hondo Fed. "4" 4-Fed		Well No. #5
Unit Letter N	Section 4	Township 18 South	Range 31 East	County Eddy	
Actual Footage Location of Well: 1650 feet from the West line and 330 feet from the South line					
Ground Level Elev. 3716.0	Producing Formation Bone Springs		Pool North Shugart - BS	Dedicated Acreage: 40 Acres	

1. Outline the acreage dedicated to the subject well by colored pencil or hatchure marks on the plat below.
2. If more than one lease is dedicated to the well, outline each and identify the ownership thereof (both as to working interest and royalty).
3. If more than one lease of different ownership is dedicated to the well, have the interests of all owners been consolidated by communitization, unitization, force-pooling, etc?

☐ Yes ☐ No If answer is "yes," type of consolidation _____

If answer is "no," list the owners and tract descriptions which have actually been consolidated. (Use reverse side of this form if necessary.) _____

No allowable will be assigned to the well until all interests have been consolidated (by communitization, unitization, forced-pooling, or otherwise) or until a non-standard unit, eliminating such interests, has been approved by the Commission.



CERTIFICATION

I hereby certify that the information contained herein is true and complete to the best of my knowledge and belief.

Name
Micky Young

Position
Drilling Superintendent

Company
Harvey E. Yates Company

Date
October 20, 1986

I hereby certify that the well location shown on this plat was plotted from field notes of actual surveys made by me or under my supervision, and that the same is true and correct to the best of my knowledge and belief.

Date Surveyed
October 9, 1986

Registered Professional Engineer and/or Land Surveyor

Certificate No. **JOHN W. WEST, 676**
RONALD J. EIDSON, 3239