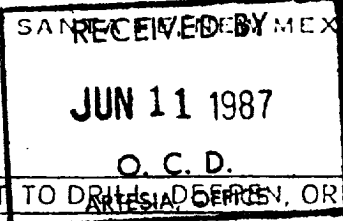


NO. OF COPIES RECEIVED	
DISTRIBUTION	
SANTA FE	
FILE	
U.S.G.S.	
LAND OFFICE	
OPERATOR	

P. O. BOX 2082  
SANTA FE, NEW MEXICO 87501



5A. Indicate Type of Lease  
STATE ☒ FEDERAL ☐  
5. State Oil & Gas Lease No.  
LG-4524

APPLICATION FOR PERMIT TO DRILL, DEEPEN, OR PLUG BACK

1a. Type of Work  
b. Type of Well DRILL ☒ DEEPEN ☐ PLUG BACK ☐  
OIL WELL ☒ GAS WELL ☐ OTHER ☐ SINGLE ZONE ☐ MULTIPLE ZONE ☐  
2. Name of Operator  
Steve Sell  
3. Address of Operator  
P. O. Box 5061, Midland, Texas 79704  
4. Location of Well UNIT LETTER K LOCATED 1650 FEET FROM THE West LINE  
AND 1650 FEET FROM THE South LINE OF SEC. 16 TWP. 18S RGE. 29E NMPM  
17. County  
Eddy  
19. Proposed Depth  
3500'  
19A. Formation  
San Andres  
20. Rotary or C.T.  
Rotary  
21. Elevations (show whether DF, RT, etc.)  
3542' Grd.  
21A. Kind & Status Plug. Bond  
One Well  
21B. Drilling Contractor  
22. Approx. Date Work will start  
June 15, 1987

PROPOSED CASING AND CEMENT PROGRAM

SIZE OF HOLE	SIZE OF CASING	WEIGHT PER FOOT	SETTING DEPTH	SACKS OF CEMENT	EST. TOP
12 1/2"	8 5/8"	23#	350'	Cir. to Surf.	Surface
7 7/8"	4 1/2" - 5 1/2"	10.5 -15.5	3500'	200 sxs.	

Plan to spud Loco Hills, San Andres test on or before June 15, 1987 with a 12 1/2" bit. Set 350' of 8 5/8" surface casing, 23# or better, with 300 sxs. of Class "C" Neat. Drill out with a 7 7/8" bit with 10# brine to a depth of 3500' or less. If commercial shows are present, 4 1/2" or 5 1/2" casing will be set with 200 sxs. Class "C" Neat and circulated to surface. If dry hole, proper plugs will be set as prescribed by the New Mexico Oil Conservation Division.

APPROVAL VALID FOR 180 DAYS  
1-13-88  
CULMINATING UNDERWAY

4. ABOVE SPACE DESCRIBE PROPOSED PROGRAM; IF PROPOSAL IS TO DEEPEN OR PLUG BACK, GIVE DATA ON PRESENT PRODUCTIVE ZONE AND PROPOSED NEW PRODUCTIVE ZONE. GIVE BLOWOUT PREVENTER PROGRAM, IF ANY.

hereby certify that the information above is true and complete to the best of my knowledge and belief.

Signed Rebecca J. Olson Title Production Clerk Date June 11, 1987

(This space for State Use)

Original Signed By

Mike Williams

APPROVED BY

Oil & Gas Inspector

DATE JUL 13 1987

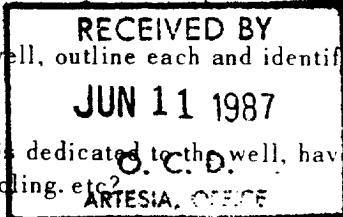
NEW MEXICO OIL CONSERVATION COMMISSION  
WELL LOCATION AND ACREAGE DEDICATION PLAT

Surveyor's Seal  
Professional Engineer  
No. 5412

All distances must be from the outer boundaries of the Section

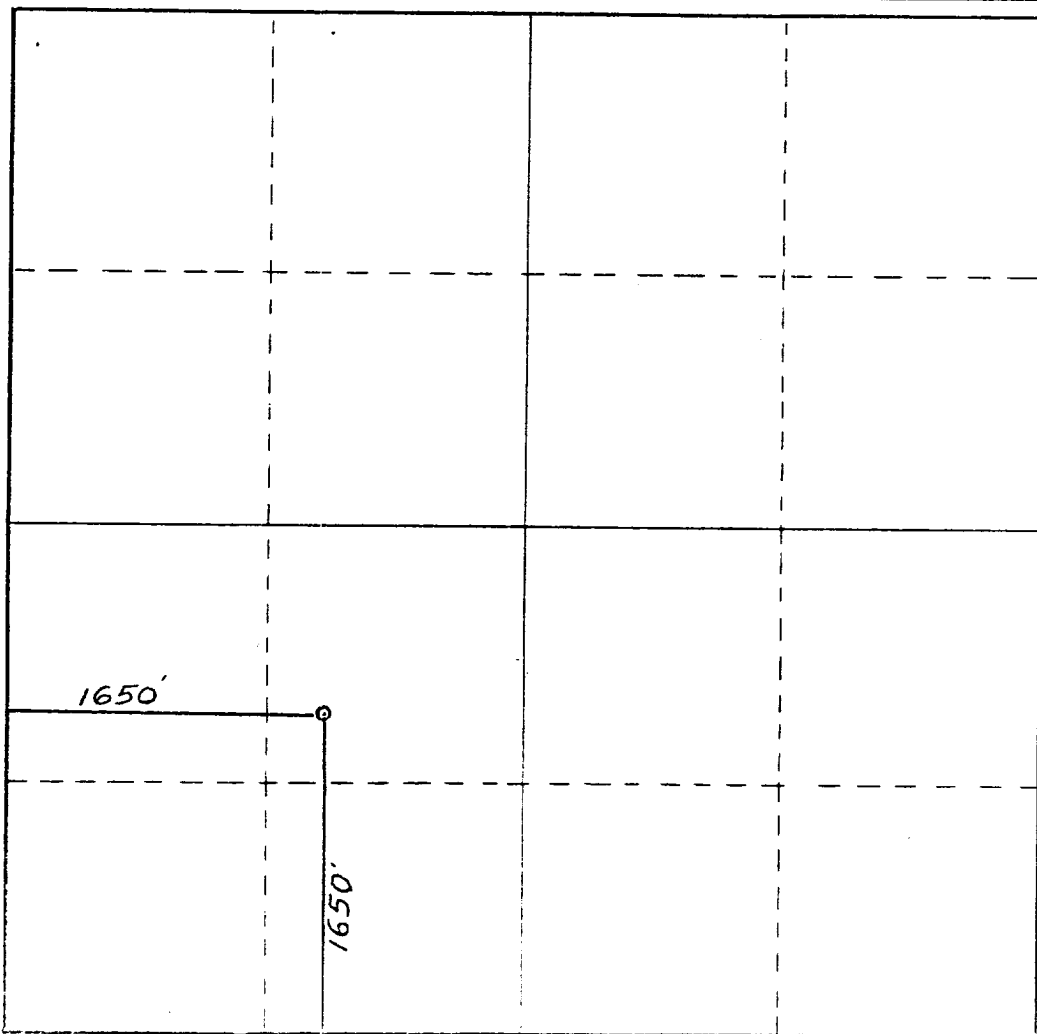
STEVE SELL			Lease Cal-mon State		Acres 4
Plot Letter K	Section 16	Township 18 South	Range 29 East	County Eddy	
Actual Footage Location of Well: 1650 feet from the South line and 1650 feet from the West line					
Ground Level Elev. 3542.	Producing Formation San Pedro	Pool Kern Hills - 2	Dedicated Acreage 40		

1. Outline the acreage dedicated to the subject well by colored pencil or hatchure marks on the plat below.
2. If more than one lease is dedicated to the well, outline each and identify the ownership thereof (both as to working interest and royalty).
3. If more than one lease of different ownership is dedicated to the well, have the interests of all owners been consolidated by communitization, unitization, force-pooling, etc?  
☐ Yes ☐ No If answer is "yes," type of consolidation \_\_\_\_\_



If answer is "no," list the owners and tract descriptions which have actually been consolidated. (Use reverse side of this form if necessary.) \_\_\_\_\_

No allowable will be assigned to the well until all interests have been consolidated (by communitization, unitization, forced-pooling, or otherwise) or until a non-standard unit, eliminating such interests, has been approved by the Commission.



CERTIFICATION

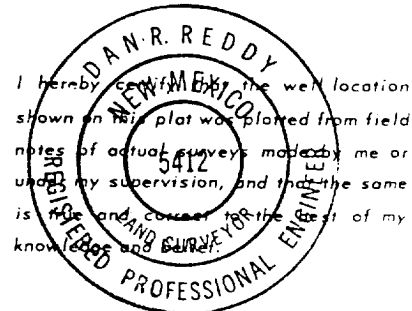
I hereby certify that the information contained herein is true and complete to the best of my knowledge and belief.

Rebecca J. Olson  
Name

Rebecca J. Olson  
Position

Agent  
Company  
Steve Sell

Date  
June 11, 1987



I hereby certify that the well location shown on this plat was plotted from field notes of actual surveys made by me or under my supervision, and that the same is true and correct to the best of my knowledge and belief.

Date Surveyed  
June 10, 1987

Registered Professional Engineer and/or Land Surveyor

Dan R. Reddy  
Signature

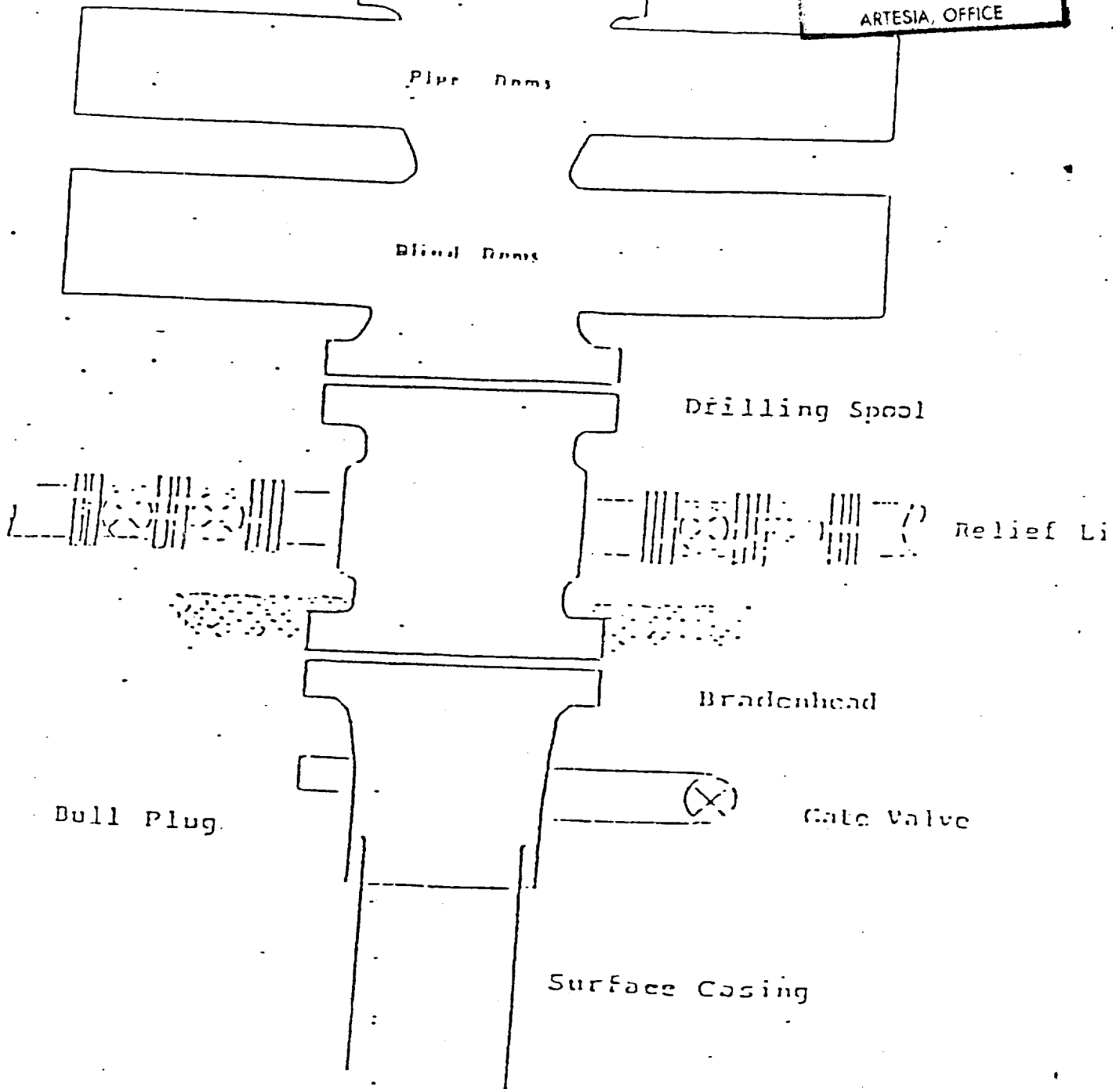
NM PELS NO. 5412

250 500 750 1000 1250 1500 1750 2000 2250 2500

RECEIVED BY

JUN 11 1987

O. C. D.  
ARTESIA, OFFICE



Series 900 Double Gate BOP, rated  
at 3000 psi Working Pressure

BLOWOUT PREVENTER ARRANGEMENT

STEVE SELL

CAL-MON STATE #4