

AMENDED

OF COPIES RECEIVED	
DISTRIBUTION	
TA FE	<input checked="" type="checkbox"/>
E	<input checked="" type="checkbox"/>
G.S.	<input checked="" type="checkbox"/>
NO OFFICE	<input checked="" type="checkbox"/>
ERATOR	<input checked="" type="checkbox"/>

NEW MEXICO OIL CONSERVATION COMMISSION

Form C-101
Revised 1-1-65

OCT 30 '87

O. C. D.

5A. Indicate Type of Lease
STATE ☐ FEE ☒

5. State Oil & Gas Lease No.

APPLICATION FOR PERMIT TO DRILL, DEEPEN, OR PLUG BACK

Type of Work

Type of Well DRILL ☒ DEEPEN ☐ PLUG BACK ☐

IL ☒ GAS WELL ☐ OTHER ☐ SINGLE ZONE ☐ MULTIPLE ZONE ☐

Name of Operator

Chevron U.S.A. Inc.

Address of Operator

P. O. Box 670, Hobbs, NM 88240

Location of Well

UNIT LETTER G LOCATED 1750 FEET FROM THE North LINE

2310 FEET FROM THE East LINE OF SEC. 14 TWP. 18S RGE. 26E NMPM

7. Unit Agreement Name

Atoka San Andres Unit

8. Farm or Lease Name

9. Well No.

161

10. Field and Pool, or Wildcat

Atoka San Andres

12. County

Eddy

19. Proposed Depth

1850'

19A. Formation

San Andres

20. Rotary or C.T.

Rotary

Elevations (Show whether DF, RT, etc.)

3305.9'

21A. Kind & Status Plug. Bond

Blanket

21B. Drilling Contractor

Not Known

22. Approx. Date Work will start

ASAP

PROPOSED CASING AND CEMENT PROGRAM

SIZE OF HOLE	SIZE OF CASING	WEIGHT PER FOOT	SETTING DEPTH	SACKS OF CEMENT	EST. TOP
12 1/4"	8 5/8"	24#	970'	650 sx "C"	Circ Surf
7 7/8"	5 1/2"	15.5#	1850'	575 sx "C"	Circ Surf

Mud Program:

0 - 970' FW Spud Mud 8.6 ppg, 32-36 vis
970 - 1850' FW 8.6-9.5 ppg, 30-36 vis, 15-20 wl, 1600-1850

APPROVAL VALID FOR 180 DAYS
PERMIT EXPIRES 5-3-88
UNLESS DRILLING UNDERWAY

BELOW SPACE DESCRIBE PROPOSED PROGRAM: IF PROPOSAL IS TO DEEPEN OR PLUG BACK, GIVE DATA ON PRESENT PRODUCTIVE ZONE AND PROPOSED NEW PRODUCTION. GIVE BLOWOUT PREVENTER PROGRAM, IF ANY.

I hereby certify that the information above is true and complete to the best of my knowledge and belief.

by M. E. Abbin Title Staff Drilling Engineer Date 10-29-87

(This space for State Use)

Original Signed By

Mike Williams

Oil & Gas Inspector

TITLE

DATE

NOV 03 1987

Verify N.M.O.C.C. in sufficient

time to witness cementing

the 8 5/8 casing

NEW MEXICO OIL CONSERVATION COMMISSION
WELL LOCATION AND ACREAGE DEDICATION PLAT

Form C-102
Supersedes C-128
Effective 1-1-65

All distances must be from the outer boundaries of the Section.

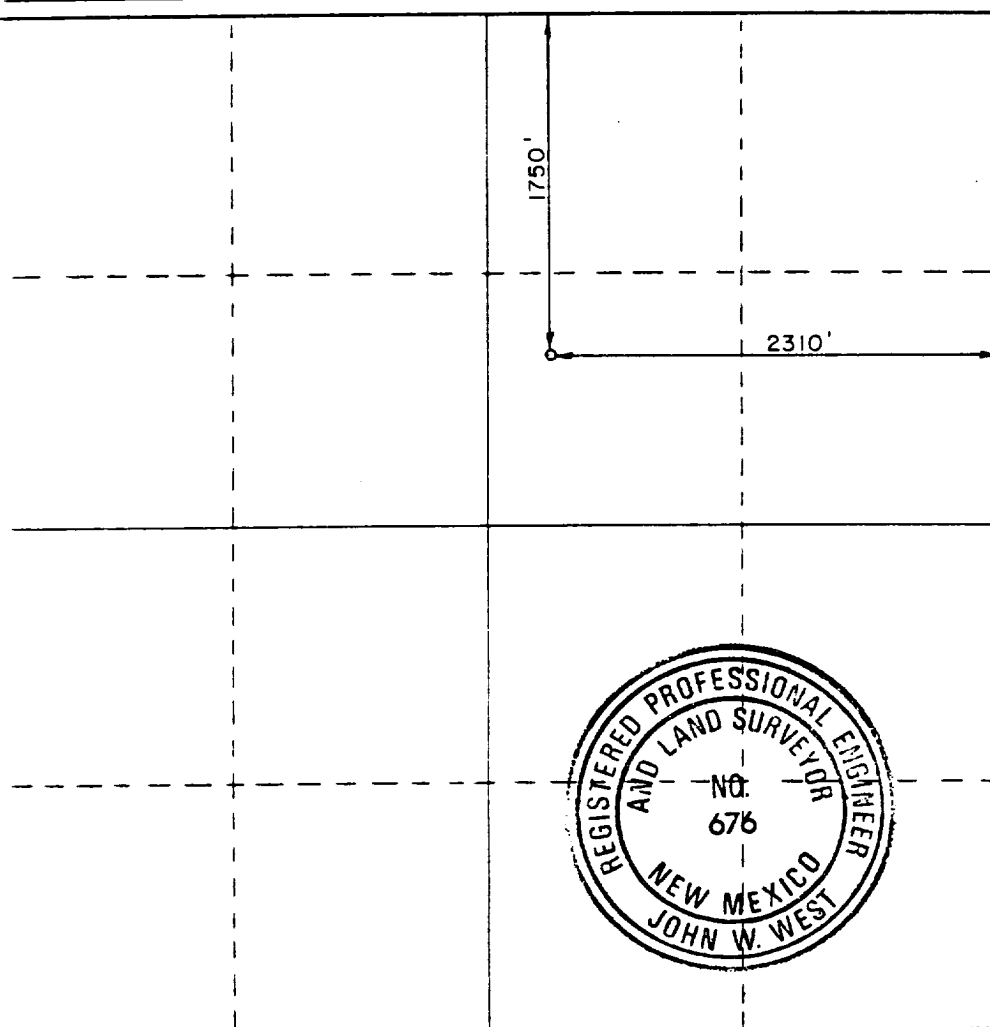
Lessor Chevron U.S.A., Inc.			Lease A.S.A.U.		Well No. 161
Letter G	Section 14	Township 18-S	Range 26-E	County Eddy	
Well Footage Location of Well: 1750 feet from the North line and 2310 feet from the East line					
Well Level Elev. 3305.9	Producing Formation San Andres		Pool Atoka San Andres		Dedicated Acreage: 40 Acres

- Outline the acreage dedicated to the subject well by colored pencil or hachure marks on the plat below.
- If more than one lease is dedicated to the well, outline each and identify the ownership thereof (both as to working interest and royalty).
- If more than one lease of different ownership is dedicated to the well, have the interests of all owners been consolidated by communitization, unitization, force-pooling, etc?

☒ Yes ☐ No If answer is "yes," type of consolidation unitization

If answer is "no," list the owners and tract descriptions which have actually been consolidated. (Use reverse side of this form if necessary.)

No allowable will be assigned to the well until all interests have been consolidated (by communitization, unitization, forced-pooling, or otherwise) or until a non-standard unit, eliminating such interests, has been approved by the Commission.



CERTIFICATION

I hereby certify that the information contained herein is true and complete to the best of my knowledge and belief.

M. E. Akins

Name
M. E. Akins
Position
Staff Drilling Engineer
Company
Chevron U.S.A. Inc.

Date
October 29, 1987

I hereby certify that the well location shown on this plat was plotted from field notes of actual surveys made by me or under my supervision, and that the same is true and correct to the best of my knowledge and belief.

Date Surveyed
October 26, 1987

Registered Professional Engineer
and/or Land Surveyor

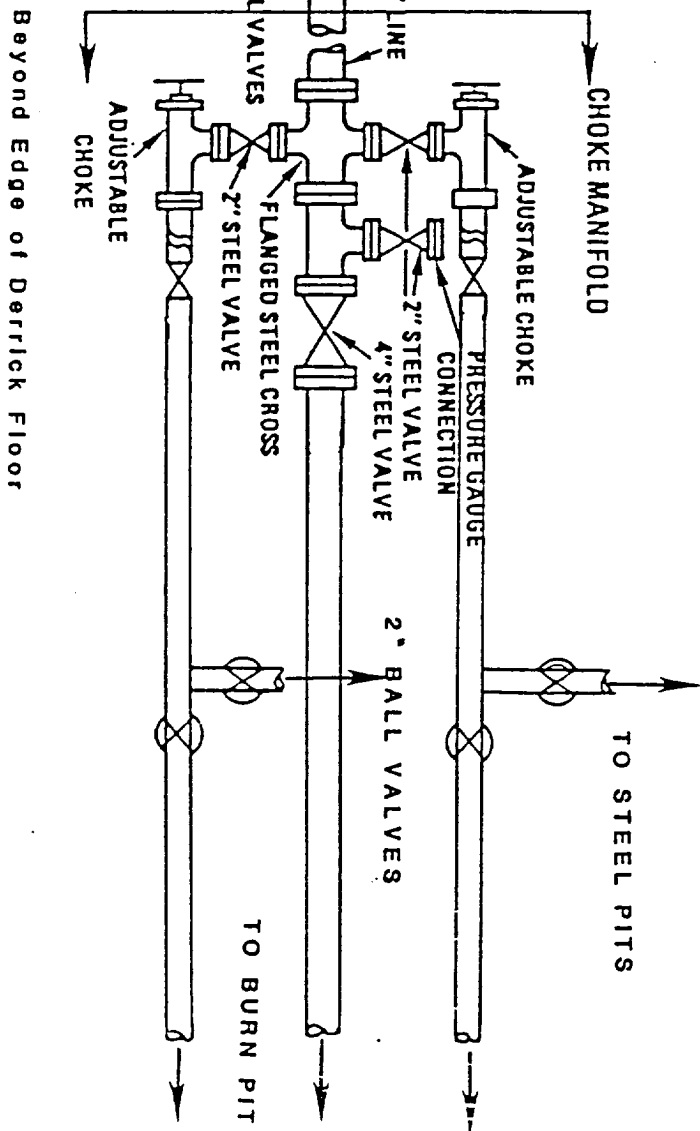
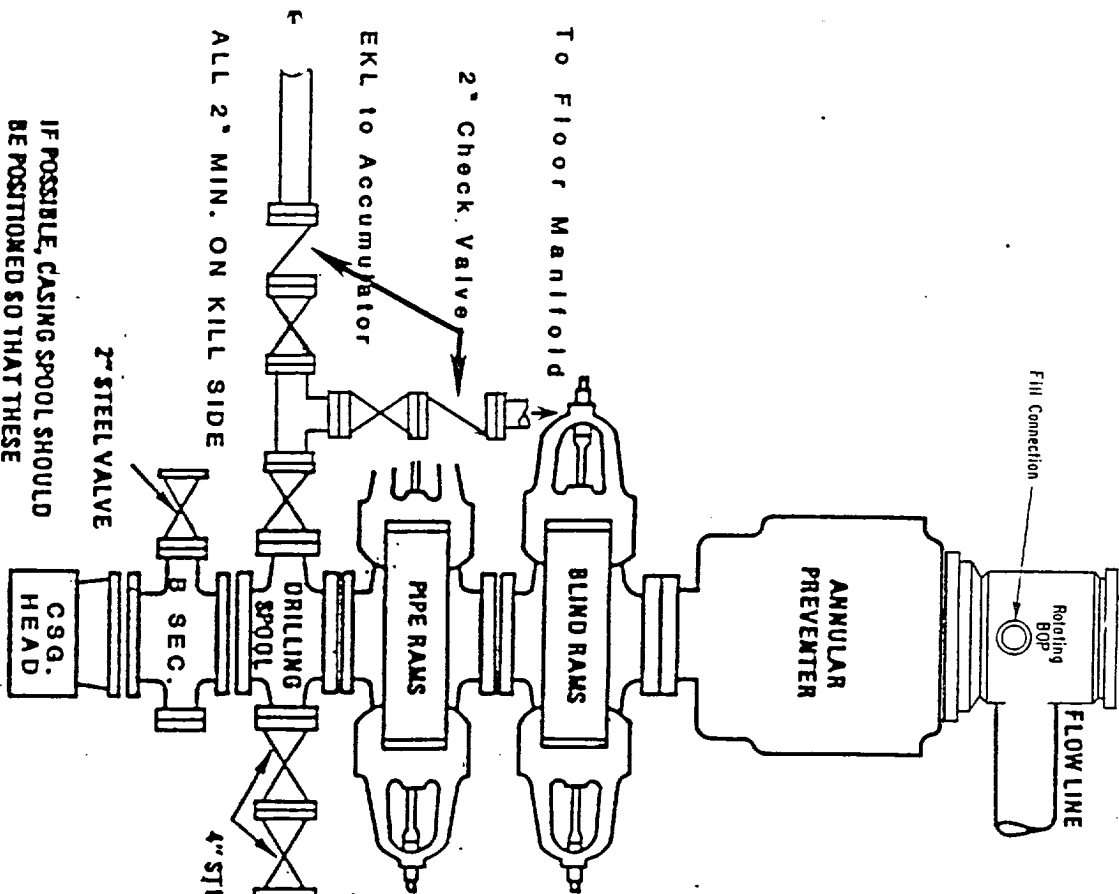
John W. West

Certificate No. JOHN W. WEST, 676
RONALD J. EIDSON, 3239

660 190 1320 1650 1980 2310 2640 2000 1600 1000 500 0

HOBBS DIVISION

CLASS THREE PREVENTER



The blowout preventer shall be nipped up as needed and a spare set of drill pipe rams shall be on location. The ram preventers may be two singles or a double type. If full opening flanged outlets are on the side of the rams, then they may be used for connecting the choke line (4") and the kill line (2"). A set of spare flange bolts and nuts will be on the structure. The blowout preventer shall be nipped up as needed and a spare set of drill pipe rams shall be on location. The ram preventers may be two singles or a double type. If full opening flanged outlets are on the side of the rams, then they may be used for connecting the choke line (4") and the kill line (2"). A set of spare flange bolts and nuts will be on the structure. The blowout preventer shall be nipped up as needed and a spare set of drill pipe rams shall be on location. The ram preventers may be two singles or a double type. If full opening flanged outlets are on the side of the rams, then they may be used for connecting the choke line (4") and the kill line (2"). A set of spare flange bolts and nuts will be on the structure.