

C-SF

UNITED STATES
DEPARTMENT OF THE INTERIOR
GEOLOGICAL SURVEY

30-015-25851

5. LEASE DESIGNATION AND SERIAL NO.

LC-069111

6. IF INDIAN, ALLOTTEE OR TRIBE NAME

7. UNIT AGREEMENT NAME

8. FARM OR LEASE NAME

Parcell Fed.

9. WELL NO.

2

10. FIELD AND POOL, OR WILDCAT

Turkey Track-SR-Q-6-SA

11. SEC., T., R., M., OR BLK. AND SURVEY OR AREA

31-18S-30E

12. COUNTY OR PARISH

Eddy

13. STATE

NM

APPLICATION FOR PERMIT TO DRILL, DEEPEN, OR PLUG BACK

1a. TYPE OF WORK

DRILL ☒

DEEPEN ☐

PLUG BACK ☐

b. TYPE OF WELL

OIL ☒
WELL

GAS ☐
WELL

OTHER

SINGLE ☐
ZONE

MULTIPLE ☐
ZONE

2. NAME OF OPERATOR

Frank O. Elliott d/b/a Elliott Oil Company

3. ADDRESS OF OPERATOR

Post Office Box 1355, Roswell, NM 88201

4. LOCATION OF WELL (Report location clearly and in accordance with any State requirements.)

2310^{ac} FNL and 1593' FWL

At proposed prod. zone

14. DISTANCE IN MILES AND DIRECTION FROM NEAREST TOWN OR POST OFFICE*

21 miles SW of Loco Hills, NM

15. DISTANCE FROM PROPOSED*

LOCATION TO NEAREST PROPERTY OR LEASE LINE, FT. (Also to nearest drig. unit line, if any)

330'

16. NO. OF ACRES IN LEASE

80

17. NO. OF ACRES ASSIGNED TO THIS WELL

40

18. DISTANCE FROM PROPOSED LOCATION*

TO NEAREST WELL, DRILLING, COMPLETED OR APPLIED FOR, ON THIS LEASE, FT.

1000'

19. PROPOSED DEPTH

3500'

20. ROTARY OR CABLE TOOLS

Rotary

21. ELEVATIONS (Show whether DF, RT, GR etc.)

3426'

22. APPROX. DATE WORK WILL START*

12-13-87

23. PROPOSED CASING AND CEMENTING PROGRAM,

SIZE OF HOLE	SIZE OF CASING	WEIGHT PER FOOT	SETTING DEPTH	QUANTITY OF CEMENT
12 1/4	8 5/8	23#	320'	Sufficient to circulate
7 7/8	5 1/2	15.5#	3400'	To cover base of salt to total depth.

Plan to drill well sufficient to test Seven Rivers, Queen and Grayburg.

Pay zone will be selectively perforated and stimulated as needed for optimum production.

Attached are: 1. Well location and acreage dedication plat.
2. Supplemental Drilling Data.
3. Thirteen Point Program.

IN ABOVE SPACE DESCRIBE PROPOSED PROGRAM: If proposal is to deepen or plug back, give data on present productive zone and proposed new productive zone. If proposal is to drill or deepen directionally, give pertinent data on subsurface locations and measured and true vertical depths. Give blowout preventer program, if any.

24.

SIGNED

D. H. B. L.

TITLE

Agent

DATE

(This space for Federal or State office use)

PERMIT NO.

APPROVAL DATE

APPROVED BY

TITLE

DATE

12-15-87

CONDITIONS OF APPROVAL, IF ANY:

NEW MEXICO OIL CONSERVATION COMMISSION WELL LOCATION AND ACREAGE DEDICATION PLAT

Form C-102
Supersedes C-128
Effective 1-1-65

All distances must be from the outer boundaries of the Section.

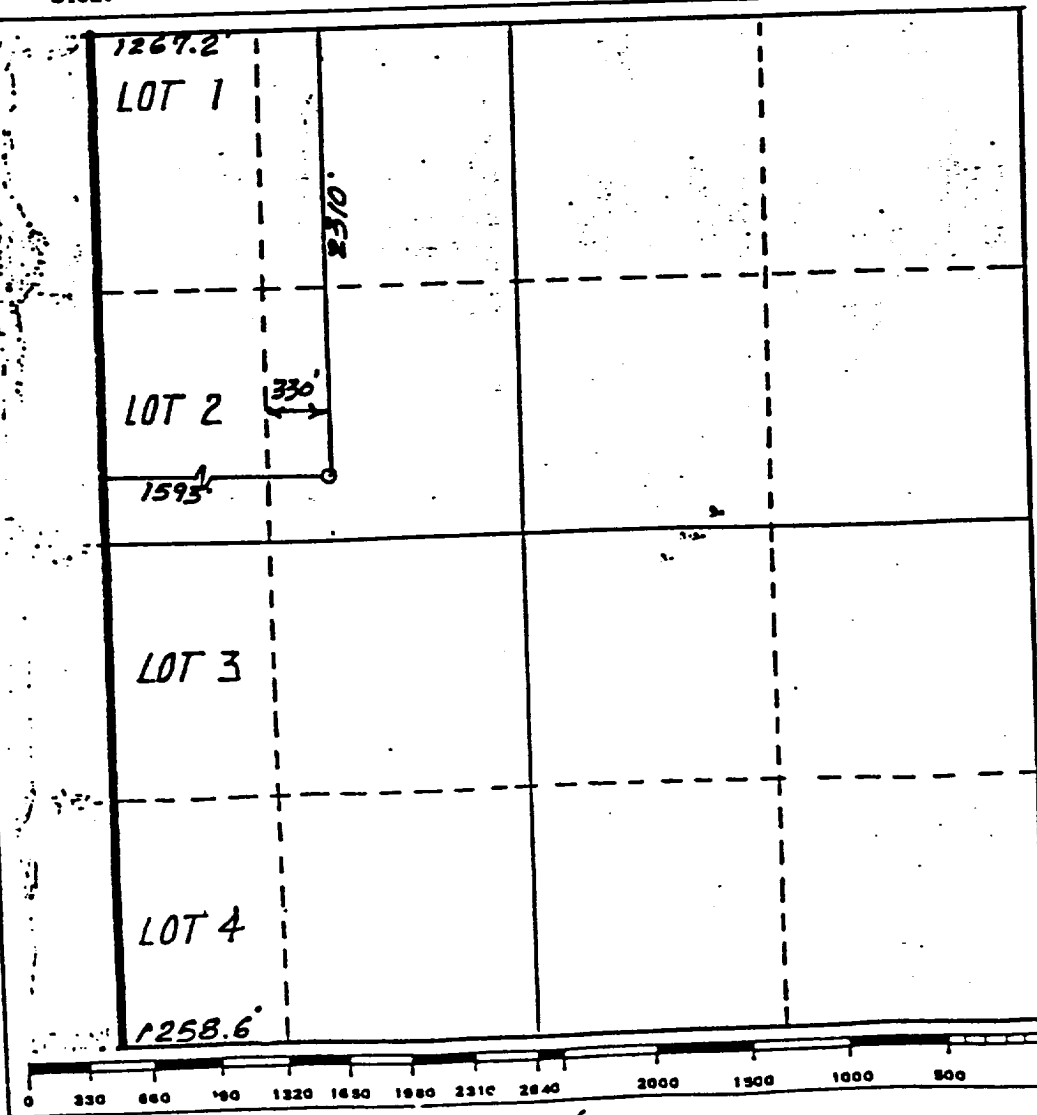
Operator Frank O. Elliott D/B/A Elliott Oil Co.			Lease Parcell Federal		Well No. 2
Unit Letter F	Section 34	Township 18 South	Range 30 East	County Eddy County, N.M.	
Actual Footage Location of Wells <div style="display: flex; justify-content: space-between;"> 2310 feet from the North line and 1593 feet from the West line </div>					
Ground Level Elev. 3426.	Producing Formation SR/Queen/Grayburg	Pool Turkey Track-SR-Q-G-SA	Dedicated Acreage: 40		Acres

1. Outline the acreage dedicated to the subject well by colored pencil or hachure marks on the plat below.
2. If more than one lease is dedicated to the well, outline each and identify the ownership thereof (both as to working interest and royalty).
3. If more than one lease of different ownership is dedicated to the well, have the interests of all owners been consolidated by communitization, unitization, force-pooling, etc?

☐ Yes ☐ No If answer is "yes," type of consolidation _____

If answer is "no," list the owners and tract descriptions which have actually been consolidated. (Use reverse side of this form if necessary.) _____

No allowable will be assigned to the well until all interests have been consolidated (by communitization, unitization, forced-pooling, or otherwise) or until a non-standard unit, eliminating such interests, has been approved by the Commission.



CERTIFICATION

I hereby certify that the information contained herein is true and complete to the best of my knowledge and belief.

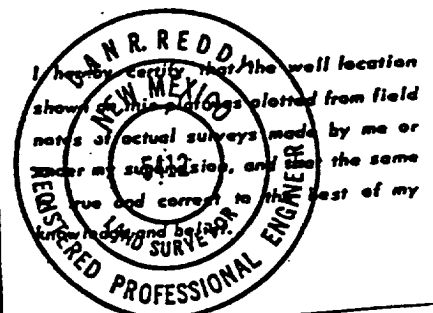
D. G. B. L.

Name
Ronald C. Pecker, Jr.

Position
Representative

Company
Elliott Oil Company

Date
December 3, 1987

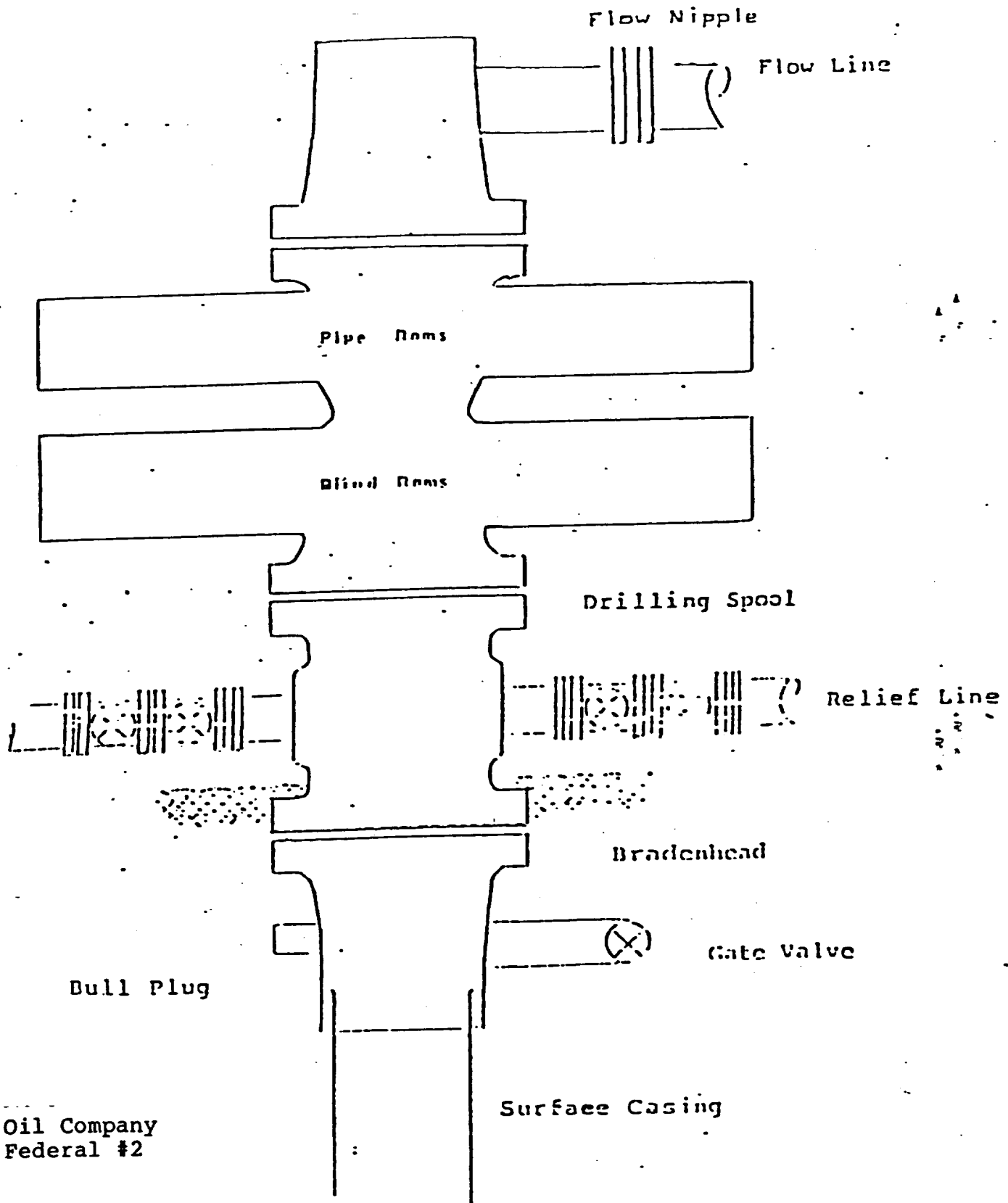


Date Surveyed
November 24, 1987

Registered Professional Engineer and/or Land Surveyor
Dan R. Reddy

Certificate No.
NEW PE&LS NO. 5412

FOR A QUEEN WELL



Elliott Oil Company
Parcell Federal #2

Series 900 Double Gate NOP, rated
at 3000 psi Working Pressure

SUPPLEMENTAL DRILLING DATA

ELLIOTT OIL COMPANY
PARCELL FEDERAL #2
S31-T18S-R31E
EDDY COUNTY, NEW MEXICO

1. ESTIMATED TOPS OF GEOLOGIC MARKERS:

Top Salt	400'	Base Salt	1150'
Yates	1350'	Seven Rivers	1620'
Queen	2400'		

2. CASING DESIGN:

<u>Size</u>	<u>Interval</u>	<u>Weight</u>	<u>Grade</u>	<u>Joint</u>
8 5/8"	0 - 320'	23.0#	H-40	STC
5 1/2"	0 - 3500'	15.5#	J-55	STC

3. PRESSURE CONTROL EQUIPMENT: An annular or a double ram-type preventer.
4. TESTING, LOGGING AND CORING PROGRAMS: No coring or DST's are planned. Electric logs will include a CDL-CN-GR, DLL-GR.
5. ABNORMAL PRESSURES, TEMPERATURES OR GASES: None anticipated.
6. ANTICIPATED STARTING DATE: It is planned that operations will commence about December 13, 1987. Duration of drilling, completion and testing operations should be 15 to 45 days.

TYPICAL LOCATION
FOR
A QUEEN WELL

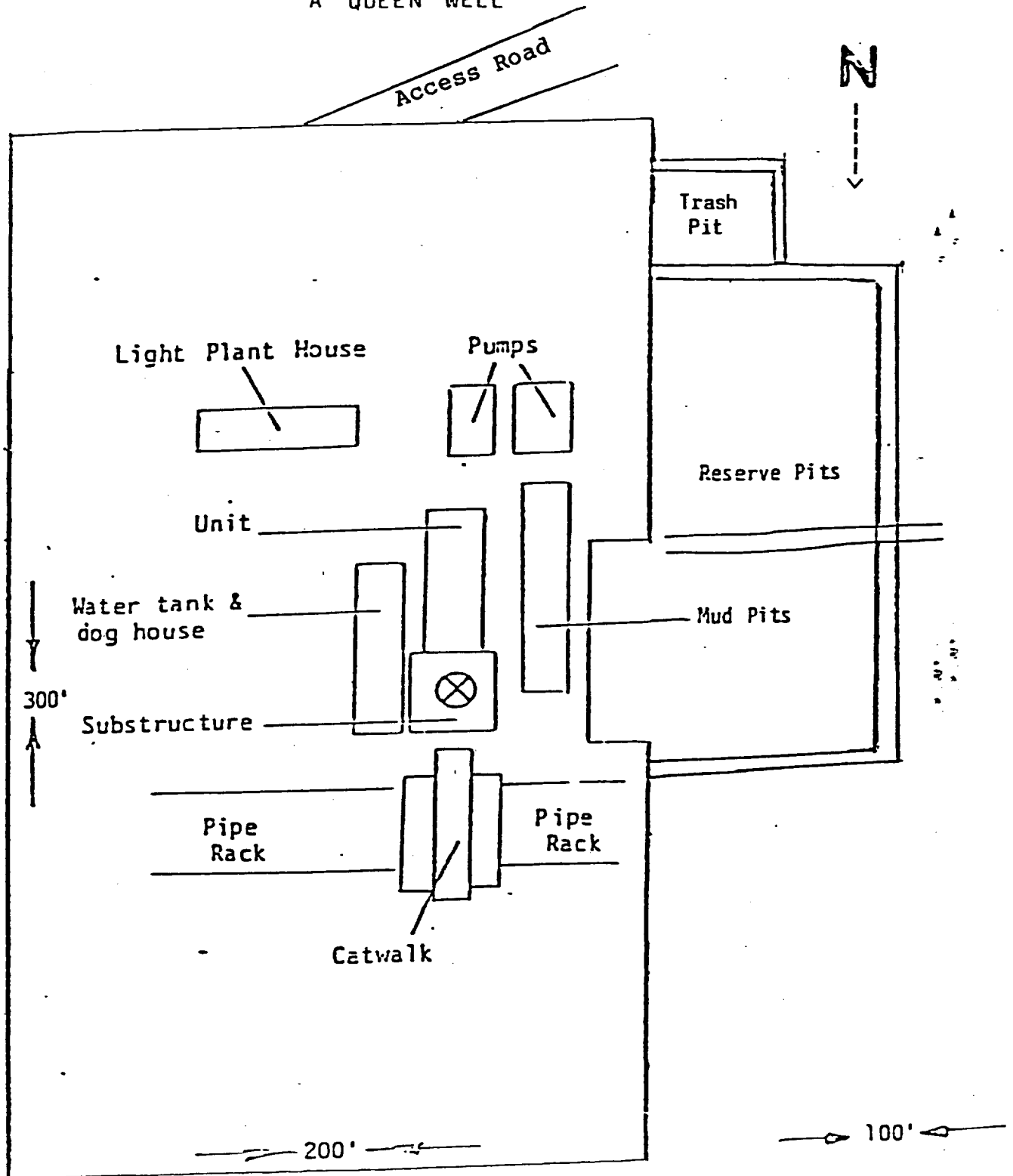


Exhibit C

OIL CITY QUADRANGLE 15-MINUTE SERIES

Exhibit A

