

**NEW MEXICO OIL CONSERVATION COMMISSION
WELL LOCATION AND ACREAGE DEDICATION PLAT**

Form C-102
Supersedes C-124
Effective 10-65

All distances must be from the outer boundaries of the Section

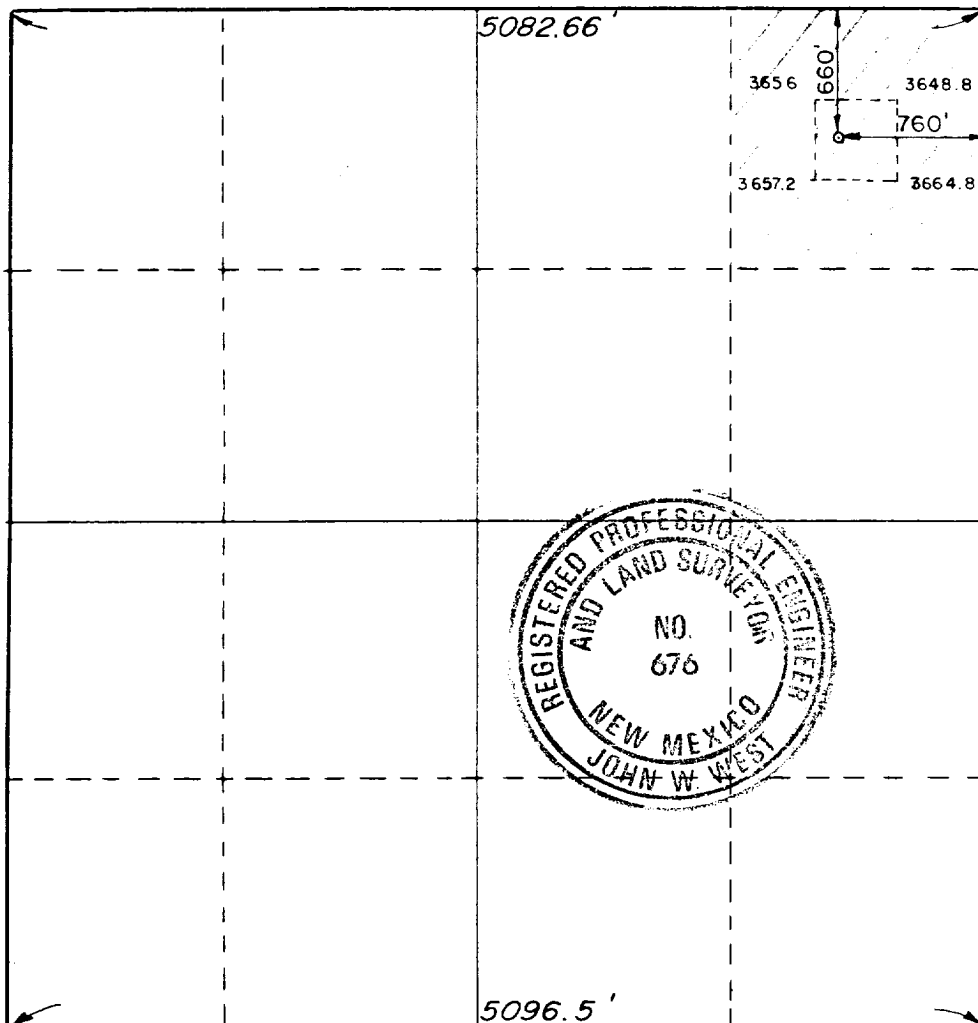
Operator Enron Oil & Gas Company			Lease Allied 7 Federal		Well No. 2
Unit Letter A	Section 7	Township 18 South	Range 31 East	County Eddy	
Actual Footage Location of Well: <div style="display: flex; justify-content: space-between;"> 660 feet from the North line and 760 feet from the East line </div>					
Ground Level Elev. 3658.0	Producing Formation Bone Spring	Pool Shugart, North	Estimated Acreage 40		

1. Outline the acreage dedicated to the subject well by colored pencil or hachure marks on the plat below.
2. If more than one lease is dedicated to the well, outline each and identify the ownership thereof (both as to working interest and royalty).
3. If more than one lease of different ownership is dedicated to the well, have the interests of all owners been consolidated by communitization, unitization, force-pooling, etc?

☐ Yes ☐ No If answer is "yes," type of consolidation _____

If answer is "no," list the owners and tract descriptions which have actually been consolidated. (Use reverse side of this form if necessary.) _____

No allowable will be assigned to the well until all interests have been consolidated (by communitization, unitization, forced-pooling, or otherwise) or until a non-standard unit, eliminating such interests, has been approved by the Commission.



CERTIFICATION

I hereby certify that the information contained herein is true and complete to the best of my knowledge and belief.

Betty Gildon
Name

Betty Gildon

Position

Regulatory Analyst

Company

Enron Oil & Gas Company

Date

March 25, 1988

I hereby certify that the well location shown on this plat was plotted from field notes of actual surveys made by me or under my supervision, and that the same is true and correct to the best of my knowledge and belief.

Date Surveyed

March 23, 1988

Registered Professional Engineer and/or Land Surveyor

John W. West

Certificate No. JOHN W. WEST, 676

RONALD J. EIDSON, 3239