

Desert  
Artesia

SUBMIT IN TRIPLICATE\*  
(Other instructions on  
reverse side)

30-015-25908  
Form approved.  
Budget Bureau No. 1004-0136  
Expires August 31, 1985

UNITED STATES  
DEPARTMENT OF THE INTERIOR  
BUREAU OF LAND MANAGEMENT

APPLICATION FOR PERMIT TO DRILL, DEEPEN, OR PLUG BACK

1A. TYPE OF WORK

DRILL ☒

DEEPEN ☐

PLUG BACK ☐

B. TYPE OF WELL

OIL  
WELL ☒

GAS  
WELL ☐

OTHER

SINGLE  
ZONE ☐

MULTIPLE  
ZONE ☐

2. NAME OF OPERATOR

Harvey E. Yates Company

3. ADDRESS OF OPERATOR

P.O. Box 1933, Roswell, New Mexico 88202

4. LOCATION OF WELL (Report location clearly and in accordance with any State requirements.)\*

At surface

330' FSL & 330' FWL

At proposed prod. zone

same

14. DISTANCE IN MILES AND DIRECTION FROM NEAREST TOWN OR POST OFFICE\*

9 miles S.W. of Maljamar, New Mexico

15. DISTANCE FROM PROPOSED\*

LOCATION TO NEAREST  
PROPERTY OR LEASE LINE, FT.  
(Also to nearest drlg. unit line, if any)

330 ft

16. NO. OF ACRES IN LEASE

160

17. NO. OF ACRES ASSIGNED  
TO THIS WELL

40

18. DISTANCE FROM PROPOSED LOCATION\*

TO NEAREST WELL, DRILLING, COMPLETED,  
OR APPLIED FOR, ON THIS LEASE, FT.

N-A

19. PROPOSED DEPTH

8800

20. ROTARY OR CABLE TOOLS

Rotary

21. ELEVATIONS (Show whether DF, RT, GR, etc.)

3666.6 GL

22. APPROX. DATE WORK WILL START\*

ASAP

23. PROPOSED CASING AND CEMENTING PROGRAM

SIZE OF HOLE	SIZE OF CASING	WEIGHT PER FOOT	SETTING DEPTH	QUANTITY OF CEMENT
17 1/2	13 3/8	54.5	350	Circ to surface
11	8 5/8	24	2000	Circ to surface
7 7/8	5 1/2	17	8800	600ft above pay

MUD PROGRAM:

0 - 350 F.W.  
350 - 2000 Brine Wtr.  
2000 - 8800 F.W. Mud

IN ABOVE SPACE DESCRIBE PROPOSED PROGRAM: If proposal is to deepen or plug back, give data on present productive zone and proposed new productive zone. If proposal is to drill or deepen directionally, give pertinent data on subsurface locations and measured and true vertical depths. Give blowout preventer program, if any.

24.

SIGNED

NM Young

TITLE

Drilling Superintendent

DATE

2/22/88

(This space for Federal or State office use)

PERMIT NO.

APPROVAL DATE

APPROVED BY

TITLE

DATE

4-26-88

CONDITIONS OF APPROVAL, IF ANY:

\*See Instructions On Reverse Side

NEW MEXICO OIL CONSERVATION COMMISSION  
WELL LOCATION AND ACREAGE DEDICATION PLAT

Form C-102  
Supersedes C-128  
Effective 1-1-65

All distances must be from the outer boundaries of the Section

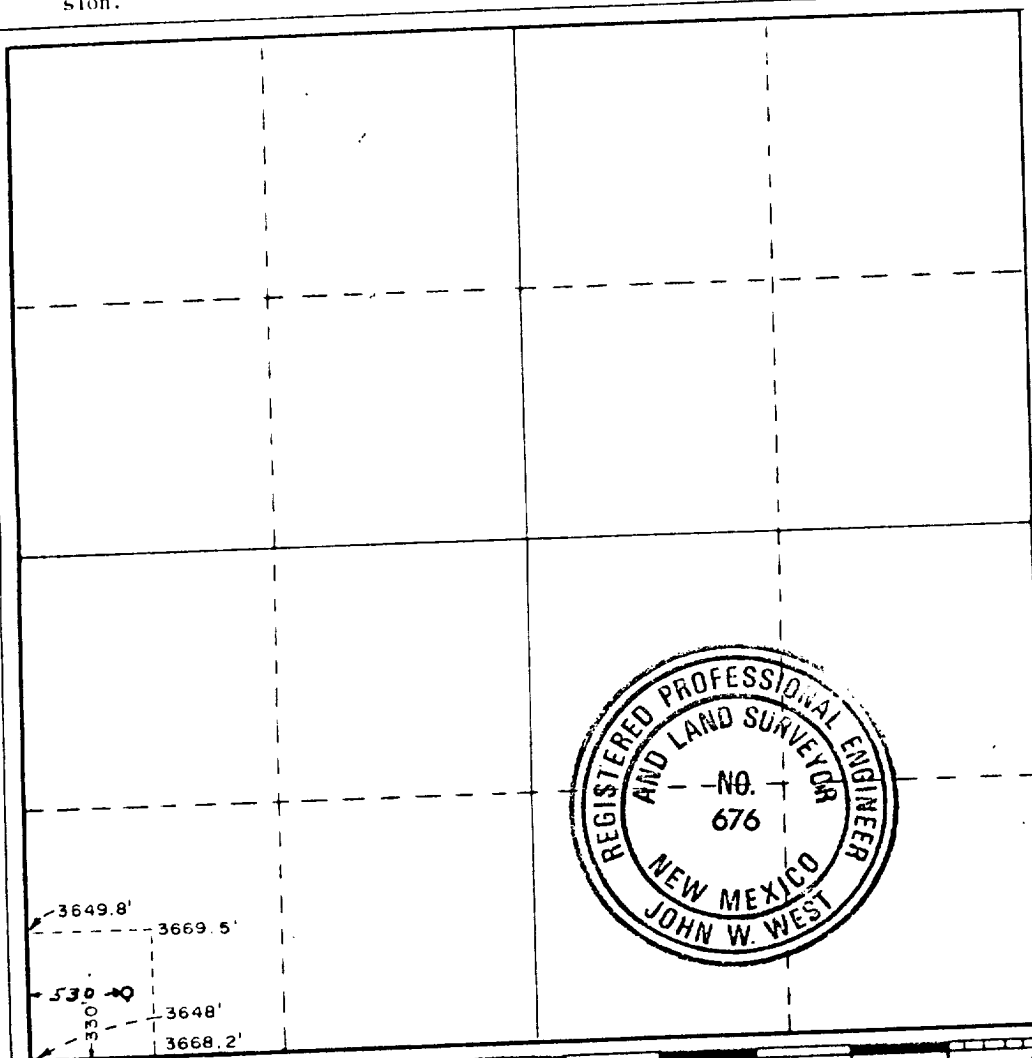
Operator Harvey E. Yates Company			Lease Parker 5 Federal		Well No. 1
Tract Letter M	Section 5	Township 18 South	Range 31 East	County Eddy	
Actual Footage Location of Well: 330 feet from the South line and 530 feet from the West line					
Ground Level Elev. 3666.6	Producing Formation Bone Spring		Pool N. SHUGART Bone Spring Wildcat	Dedicated Acreage: 40 Acres	

- Outline the acreage dedicated to the subject well by colored pencil or hachure marks on the plat below.
- If more than one lease is dedicated to the well, outline each and identify the ownership thereof (both as to working interest and royalty).
- If more than one lease of different ownership is dedicated to the well, have the interests of all owners been consolidated by communitization, unitization, force-pooling, etc?

☐ Yes ☐ No If answer is "yes," type of consolidation \_\_\_\_\_

If answer is "no," list the owners and tract descriptions which have actually been consolidated. (Use reverse side of this form if necessary.) \_\_\_\_\_

No allowable will be assigned to the well until all interests have been consolidated (by communitization, unitization, forced-pooling, or otherwise) or until a non-standard unit, eliminating such interests, has been approved by the Commission.



CERTIFICATION

I hereby certify that the information contained herein is true and complete to the best of my knowledge and belief.

*[Signature]*

Name  
Dan Girand  
Position  
Contract Administrator  
Company  
Harvey E. Yates Company

Date  
4/13/88

I hereby certify that the well location shown on this plat was plotted from field notes of actual surveys made by me or under my supervision, and that the same is true and correct to the best of my knowledge and belief.

Date Surveyed  
February 11, 1988

Registered Professional Engineer and/or Land Surveyor

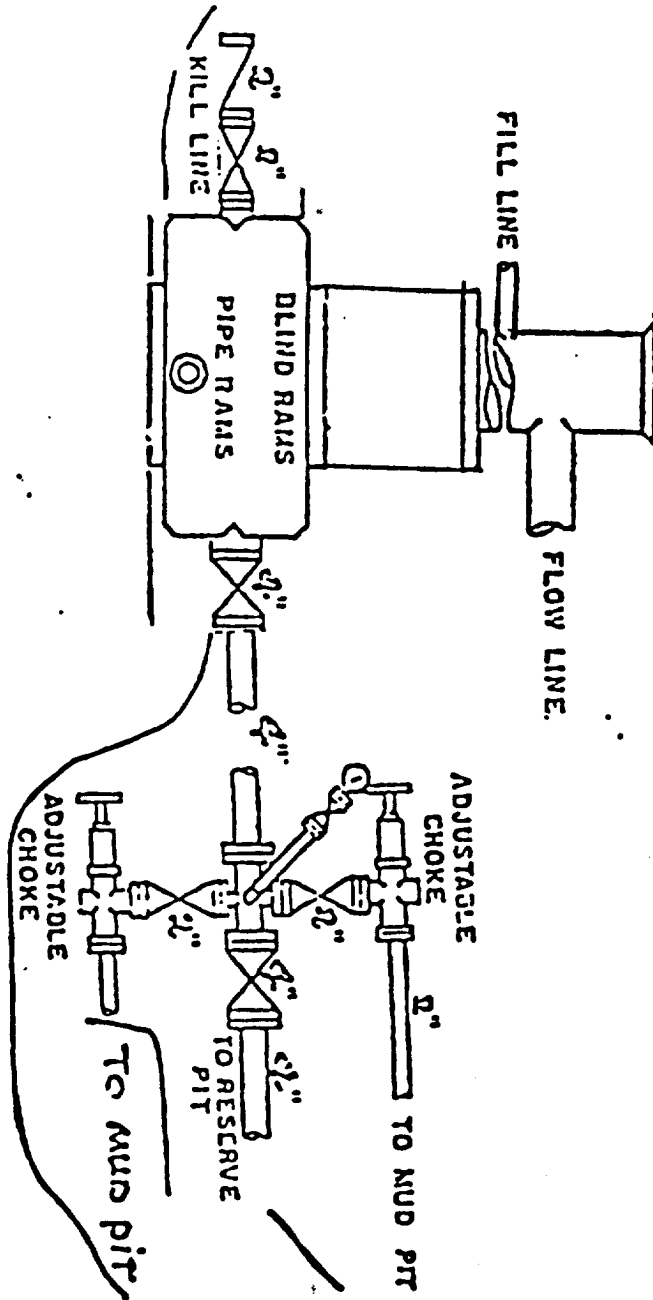
*[Signature]*

Certificate No. JOHN W. WEST, 676  
RONALD J. EIDSON, 3239

EXHIBIT C

Harvey E. Yates Co.  
Parker 5 Federal 1  
Sec. 5 T-18S R-31E  
Eddy, New Mexico

900 Series



Application

HARVEY E. YATES COMPANY  
Parker "5" Federal #1  
Section 5, T18S, R31E  
Eddy County, New Mexico

In conjunction with Form 3160-3, Application for Permit to Drill the Subject well in Section 5, Township 18 South, Range 31 East, Eddy County, New Mexico, Harvey E. Yates Company submits the following ten items of pertinent information in accordance with Bureau of Land Management requirements:

1. The geologic surface formation is quaternary alluvium and bolson deposits and other surficial deposits.
2. The estimated tops of geologic markers are as follows:

Rustler	0512'	Grayburg	3422'
Yates	1862'	San Andres	3782'
Seven Rivers	2232'	Delaware Sand	4197'
Bowers	2592'	Bone Spring	4612'
Queen	2932'	TD	8800'
Penrose	3147'		

3. We do not anticipate finding water but have listed the formation in which we anticipate finding oil or gas.

Bone Spring      4612'

4. Proposed casing program: See Form 3160-3
5. Pressure control equipment: See Exhibit C.
6. Mud program: See Form 3160-3.
7. Auxiliary equipment: Blowout preventer
8. Testing, logging and coring programs: We do not plan to core or DST. The planned logs are CND w/GR and Caliper; DLL-MSFL.
9. No abnormal pressures or temperatures are anticipated.
10. Anticipated starting date: As soon as possible.

EXHIBIT A

Harvey E. Yates Co.  
Parker 5 Federal 1  
Sec. 5 T-18S R-31E  
Eddy Co., New Mexico

Map showing the location of the Harvey E. Yates Company Parker Federal Well No. 1. T18S, R31E, Section 5, Centre, SW/4SW/4SW/4 [330 FSL, 330 FWL], Eddy County, New Mexico. Square shows location of well pad; dot shows location of Isolated Mani-festation. USGS 7.5' series, LOCO HILLS, NEW MEXICO, 1985. ASC project: 88-20.

Parker 5 Fed.  
Well No. 1

QUERRECHO

PLAINS

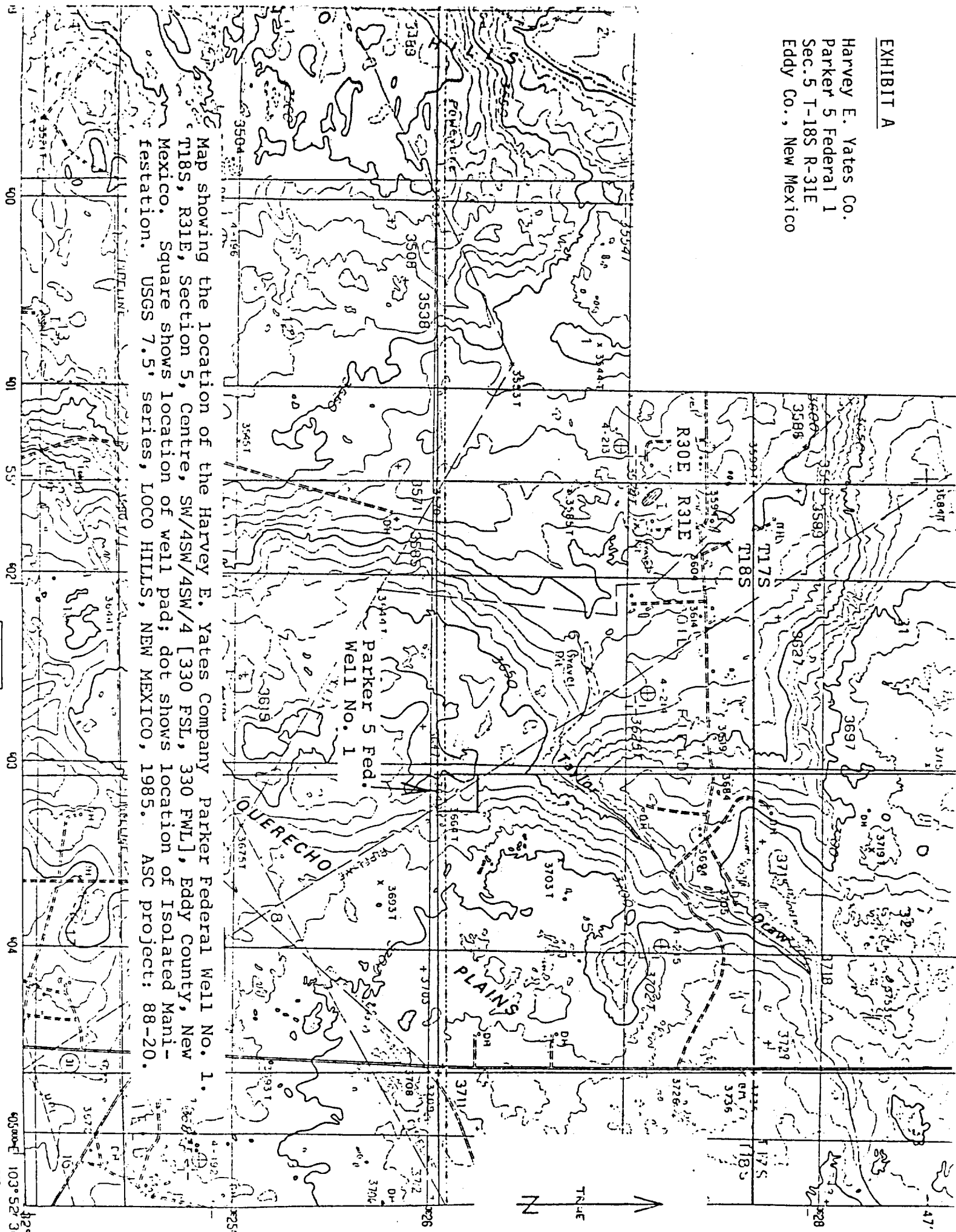
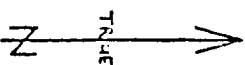


EXHIBIT D

Harvey E. Yates Co.  
Parker 5 Federal 1  
Sec. 5 T-18S R-31E  
Eddy Co., New Mexico

