

UNITED STATES  
DEPARTMENT OF THE INTERIOR  
BUREAU OF LAND MANAGEMENT

APPLICATION FOR PERMIT TO DRILL, DEEPEN, OR PLUG BACK

1a. TYPE OF WORK

DRILL ☒

DEEPEN ☐

PLUG BACK ☐

b. TYPE OF WELL

OIL  
WELL ☒

GAS  
WELL ☐

OTHER

SINGLE  
ZONE ☐

MULTIPLE  
ZONE ☐

2. NAME OF OPERATOR

Yates Petroleum Corporation

3. ADDRESS OF OPERATOR

105 South Fourth Street - Artesia, NM 88210

4. LOCATION OF WELL (Report location clearly and in accordance with any State requirements.)

At surface

1980' FNL and 760' FEL

At proposed prod. zone

Same

14. DISTANCE IN MILES AND DIRECTION FROM NEAREST TOWN OR POST OFFICE\*

Approximately 11 miles southwest of Artesia, New Mexico

10. DISTANCE FROM PROPOSED\*

LOCATION TO NEAREST  
PROPERTY OR LEASE LINE, FT.  
(Also to nearest drlg. unit line, if any)

660'

16. NO. OF ACRES IN LEASE

80

17. NO. OF ACRES ASSIGNED  
TO THIS WELL

40

18. DISTANCE FROM PROPOSED LOCATION\*  
TO NEAREST WELL, DRILLING, COMPLETED,  
OR APPLIED FOR, ON THIS LEASE, FT.

19. PROPOSED DEPTH

1425'

20. ROTARY OR CABLE TOOLS

Rotary

21. ELEVATIONS (Show whether DF, RT, GR, etc.)

3609.5' GR

22. APPROX. DATE WORK WILL START\*

ASAP

23.

PROPOSED CASING AND CEMENTING PROGRAM

SIZE OF HOLE	SIZE OF CASING	WEIGHT PER FOOT	SETTING DEPTH	QUANTITY OF CEMENT
17-1/2"	13-3/8"	54.5# J-55	Approx. 300'	250 sacks - circulate
12-1/4"	8-5/8"	24# K-55	" 1075'	600 sacks - circulate

We propose to drill a San Andres test. Approximately 300' of 13-3/8" casing will be ran and cemented to surface to shut off gravel and cavings. 8-5/8" casing will be ran to approximately 1075' and cement circulated to surface. If productive, the well will be completed in the open-hole.

MUD PROGRAM: Spud mud & LCM to 1075', fresh water to TD

BOP PROGRAM: BOP's to be installed on the 8-5/8" casing and tested daily

IN ABOVE SPACE DESCRIBE PROPOSED PROGRAM: If proposal is to deepen or plug back, give data on present productive zone and proposed new productive zone. If proposal is to drill or deepen directionally, give pertinent data on subsurface locations and measured and true vertical depths. Give blowout preventer program, if any.

24.

SIGNED

Clifton R. May

TITLE Permit Agent

DATE April 12, 1988

(This space for Federal or State office use)

PERMIT NO.

APPROVAL DATE

APPROVED BY

TITLE

DATE

CONDITIONS OF APPROVAL, IF ANY:

\*See Instructions On Reverse Side

**NEW MEXICO OIL CONSERVATION COMMISSION  
WELL LOCATION AND ACREAGE DEDICATION PLAT**

Form C-102  
Supersedes C-128  
Effective 1-1-65

All distances must be from the outer boundaries of the Section.

Operator <b>YATES PETROLEUM CORPORATION</b>			Lease <b>NEW DEAL AFD FEDERAL</b>		Well No. <b>1</b>
Unit Letter <b>H</b>	Section <b>6</b>	Township <b>18S</b>	Range <b>25E</b>	County <b>Eddy</b>	
Actual Footage Location of Well: <b>1980</b> feet from the <b>North</b> line and <b>760</b> feet from the <b>East</b> line					
Ground Level Elev. <b>3609.5'</b>	Producing Formation <b>SAN ANDRES</b>		Pool <b>WILDCAT SAN ANDRES</b>		Dedicated Acreage: <b>40</b> Acres

1. Outline the acreage dedicated to the subject well by colored pencil or hachure marks on the plat below.
2. If more than one lease is dedicated to the well, outline each and identify the ownership thereof (both as to working interest and royalty).
3. If more than one lease of different ownership is dedicated to the well, have the interests of all owners been consolidated by communitization, unitization, force-pooling, etc?

☐ Yes ☐ No If answer is "yes," type of consolidation \_\_\_\_\_

If answer is "no," list the owners and tract descriptions which have actually been consolidated. (Use reverse side of this form if necessary.) \_\_\_\_\_

No allowable will be assigned to the well until all interests have been consolidated (by communitization, unitization, forced-pooling, or otherwise) or until a non-standard unit, eliminating such interests, has been approved by the Commission.

**CERTIFICATION**

I hereby certify that the information contained herein is true and complete to the best of my knowledge and belief.

*Clifton R. May*  
Name

Clifton R. May

Position

Permit Agent

Company

Yates Petroleum Corporation

Date

April 12, 1988

I hereby certify that the well location shown on this plat was plotted from field notes of actual surveys made by me or under my supervision, and that the same is true and correct to the best of my knowledge and belief.

Date Survey

Required Professional Engineer and Land Surveyor

L JONES

Certification

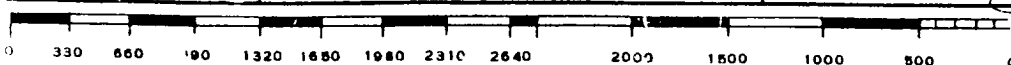
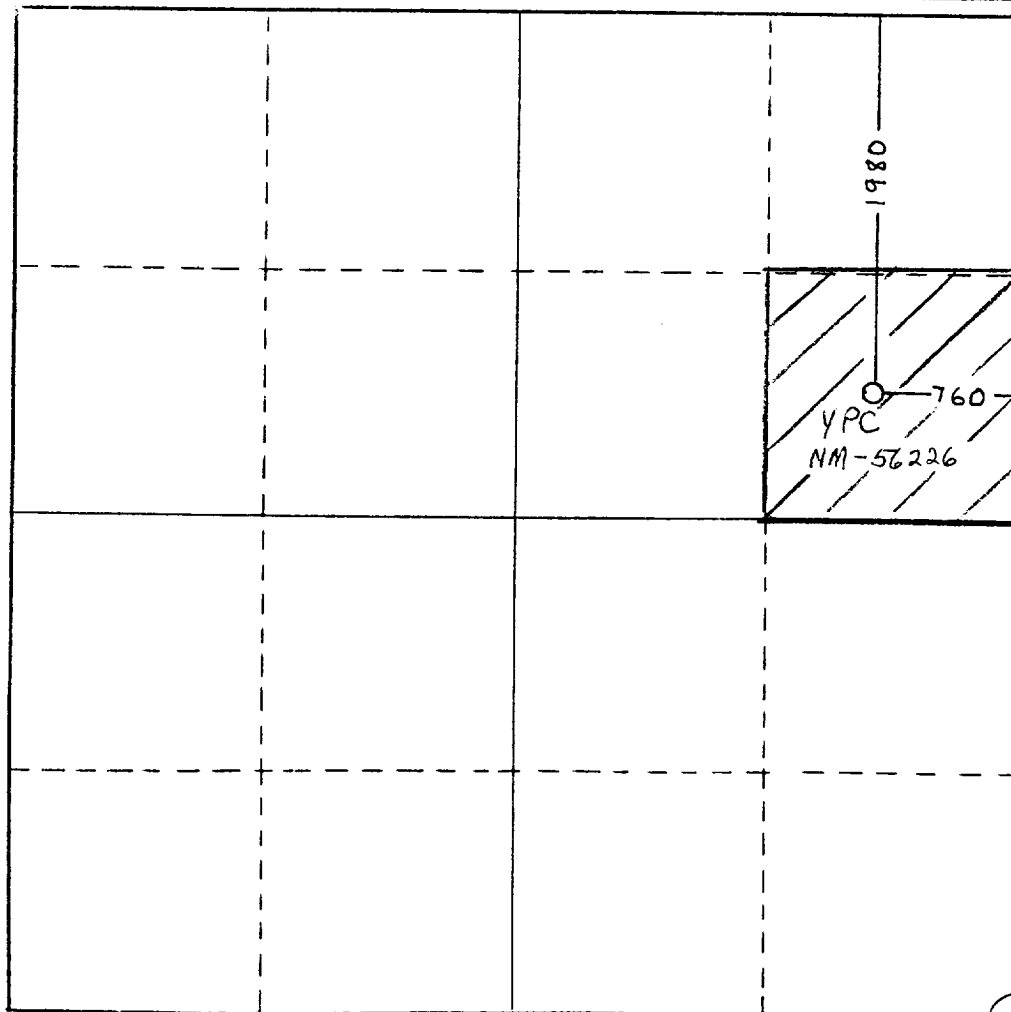
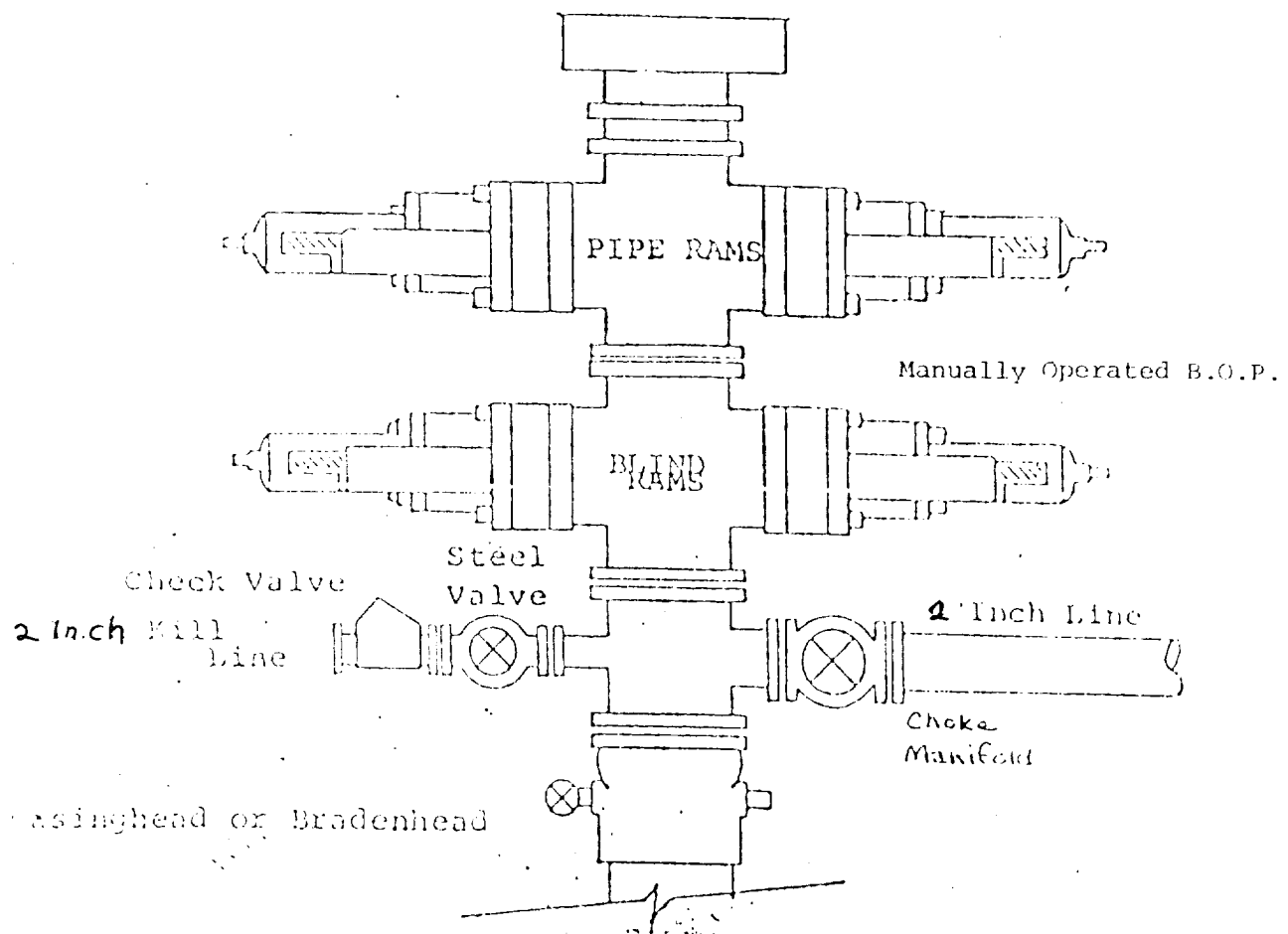


EXHIBIT B  
BDP DIAGRAM  
RATED 3000<sup>#</sup>

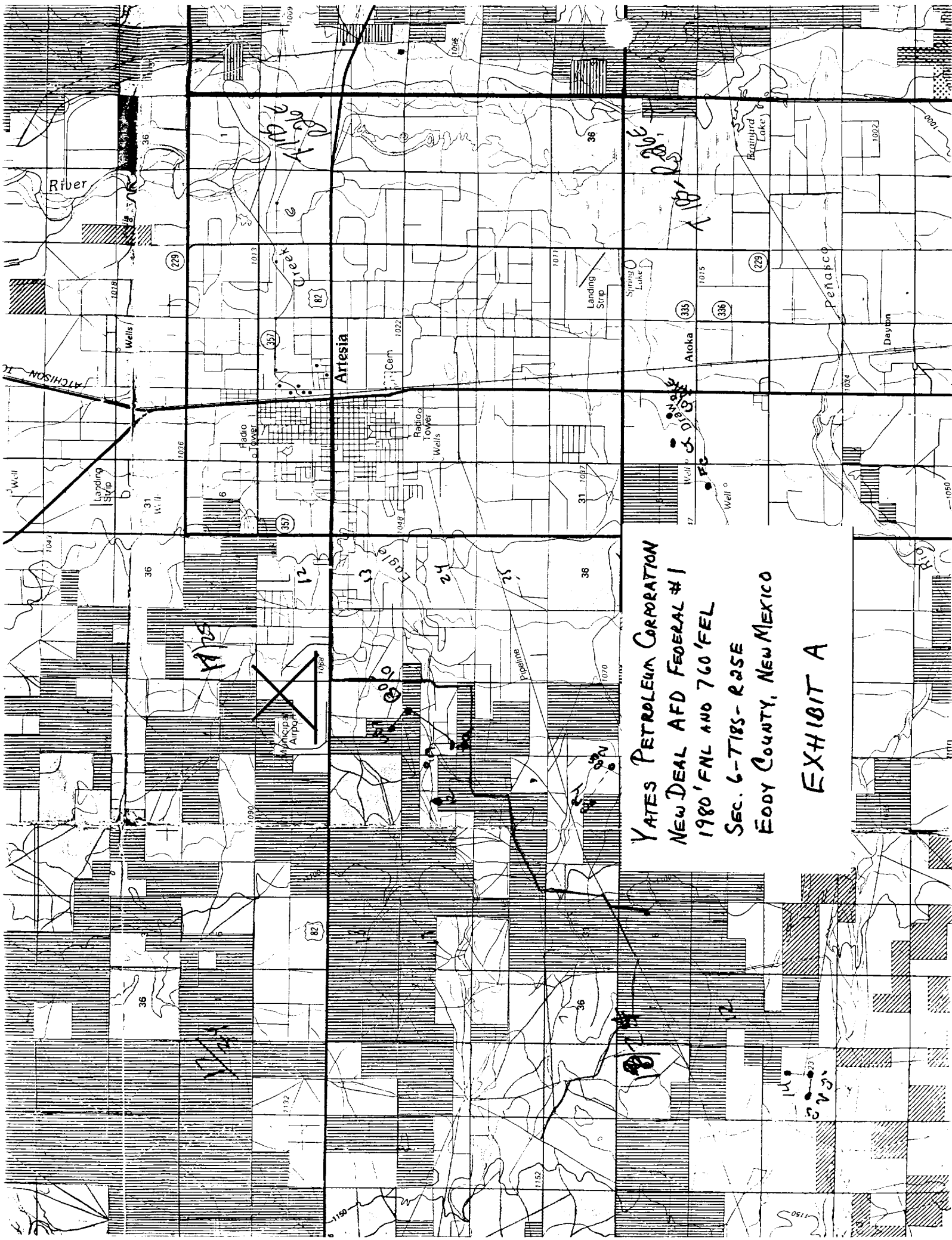


YATES PETROLEUM CORPORATION  
New Deal AFD Federal #1  
1980' FNL and 760' FEL of  
Section 6-T18S-R25E  
Eddy County, New Mexico

In conjunction with Form 9-331C, Application for Permit to Drill subject well, Yates Petroleum Corporation submits the following ten items of pertinent information in accordance with BLM requirements.

1. The geological surface formation is quaternary alluvium.
2. The estimated tops of geologic markers are as follows:

San Andres	625'
Slaughter	1075'
TD	1425'
3. The estimated depths at which anticipated water, oil or gas formations are expected to be encountered:  
  
Water: Approximately 150'  
Oil or Gas: Oil 1100-1300'
4. Proposed Casing Program: See Form 9-331C.
5. Pressure Control Equipment: See Form 9-331C.
6. Mud Program: See Form 9-331C.
7. Auxiliary Equipment: Kelly cock, pit level indicators and flow sensor equipment; sub with full opening valve on floor, drill pipe connection.
8. Testing, Logging and Coring Program:  
  
DST's: None  
Logging: Gamma Ray Neutron  
Samples: 10' sample out from under surface casing to TD  
Coring: None
9. No abnormal pressures or temperatures are anticipated.
10. Anticipated starting date: As soon as possible after approval.



YATES PETROLEUM CORPORATION  
NEW DEAL AFD FEDERAL #1  
1980' FNL AND 760' FEL  
SEC. 6-T18S-R2SE  
EDDY COUNTY, NEW MEXICO

EXHIBIT A

# YATES PETROLEUM CORPORATION

## EXHIBIT C

