

UNITED STATES
DEPARTMENT OF THE INTERIOR
BUREAU OF LAND MANAGEMENT

APPLICATION FOR PERMIT TO DRILL, DEEPEN, OR PLUG BACK

1a. TYPE OF WORK

DRILL ☒

DEEPEN ☐

PLUG BACK ☐

b. TYPE OF WELL

OIL
WELL ☒

GAS
WELL ☐

OTHER

SINGLE
ZONE ☒

MULTIPLE
ZONE ☐

2. NAME OF OPERATOR

BTA Oil Producers

RECEIVED

3. ADDRESS OF OPERATOR

104 South Pecos; Midland, TX 79701

SEP 01 '88

4. LOCATION OF WELL (Report location clearly and in accordance with any State requirements)

At surface

1,880' FNL & 1,880' FEL

At proposed prod. zone

O. C. D.
ARTESIA, OFFICE

14. DISTANCE IN MILES AND DIRECTION FROM NEAREST TOWN OR POST OFFICE*

7 miles southwest of Maljamar

15. DISTANCE FROM PROPOSED*

LOCATION TO NEAREST
PROPERTY OR LEASE LINE, FT.
(Also to nearest drlg. unit line, if any)

1,880'

16. NO. OF ACRES IN LEASE

800

17. NO. OF ACRES ASSIGNED
TO THIS WELL

40

18. DISTANCE FROM PROPOSED LOCATION*
TO NEAREST WELL, DRILLING, COMPLETED,
OR APPLIED FOR, ON THIS LEASE, FT.

None

19. PROPOSED DEPTH

8,500'

20. ROTARY OR CABLE TOOLS

Rotary

21. ELEVATIONS (Show whether DF, RT, GR, etc.)

3,876' GR - 3,889' RKB

22. APPROX. DATE WORK WILL START*

9-1-88

23. PROPOSED CASING AND CEMENTING PROGRAM

SIZE OF HOLE	SIZE OF CASING	WEIGHT PER FOOT	SETTING DEPTH	QUANTITY OF CEMENT
17-1/2"	13-3/8"	54.5#	400'	450 sx - circ
11"	8-5/8"	24 & 32#	4,150'	1500 sx - circ
7-7/8"	5-1/2"	17#	8,500'	1500 sx TOC @ 3,000'

BOP Equipment: Double Hydraulic - 3,000 psi
See Exhibit -F-

RECEIVED

POST 10#1
NL & API
9-9-88

OCD Rule 102: The Puckett -B-, Well No. 10 & 25 are located in this quarter-quarter section. A copy of this form & plat mailed this date to:
W. A. & E. R. Hudson, Inc.; 616 Texas St.; Ft. Worth, TX 76102

IN ABOVE SPACE DESCRIBE PROPOSED PROGRAM: If proposal is to deepen or plug back, give data on present productive zone and proposed new productive zone. If proposal is to drill or deepen directionally, give pertinent data on subsurface locations and measured and true vertical depths. Give blowout preventer program, if any.

24. SIGNED Dorothy Houghton TITLE Regulatory Supervisor DATE 8-2-88
(This space for Federal or State office use)

PERMIT NO. _____ APPROVAL DATE _____

APPROVED BY _____ TITLE _____ DATE 8-31-88
CONDITIONS OF APPROVAL, IF ANY:

*See Instructions On Reverse Side

NEW MEXICO OIL CONSERVATION COMMISSION
WELL LOCATION AND ACREAGE DEDICATION PLAT

Form C-102
Supersedes C-128
Effective 1-1-65

All distances must be from the outer boundaries of the Section.

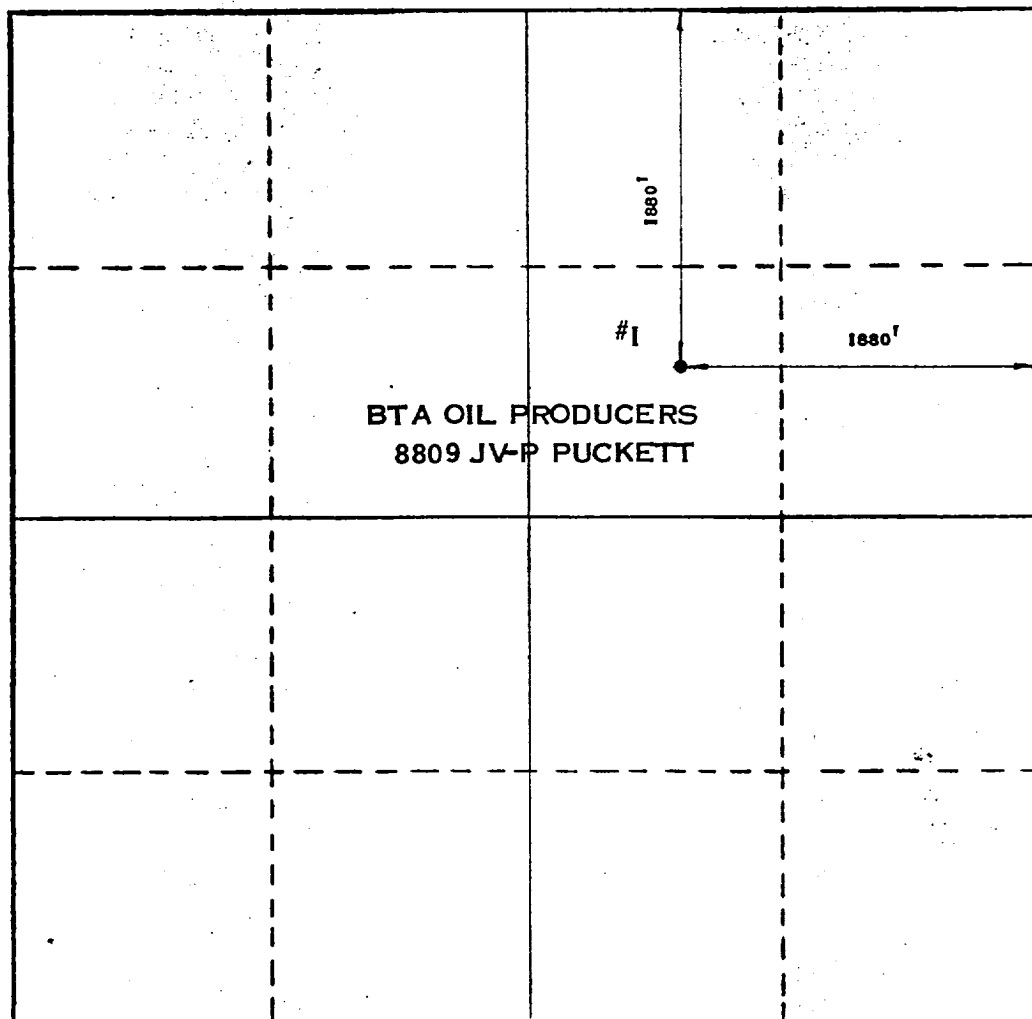
Operator BTA OIL PRODUCERS		Lease 8809 JV-P PUCKETT		Well No. 1
Unit Letter "G"	Section 25	Township 17-S	Range 31-E	County EDDY
Actual Footage Location of Well: 1880 feet from the NORTH line and 1880 feet from the EAST line				
Ground Level Elev. 3876	Producing Formation ABO	Pool WILDCAT	Dedicated Acreage: 40 Acres	

1. Outline the acreage dedicated to the subject well by colored pencil or hatchure marks on the plat below.
2. If more than one lease is dedicated to the well, outline each and identify the ownership thereof (both as to working interest and royalty).
3. If more than one lease of different ownership is dedicated to the well, have the interests of all owners been consolidated by communitization, unitization, force-pooling, etc?

☐ Yes ☐ No If answer is "yes," type of consolidation _____

If answer is "no," list the owners and tract descriptions which have actually been consolidated. (Use reverse side of this form if necessary.) _____

No allowable will be assigned to the well until all interests have been consolidated (by communitization, unitization, forced-pooling, or otherwise) or until a non-standard unit, eliminating such interests, has been approved by the Commission.



CERTIFICATION

I hereby certify that the information contained herein is true and complete to the best of my knowledge and belief.

Dorothy Houghton
Name

Dorothy Houghton

Position
Regulatory Administrator

Company
BTA OIL PRODUCERS

Date
August 3, 1988

I hereby certify that the well location shown on this plat was plotted from field notes of actual surveys made by me or under my supervision, and that the same is true and correct to the best of my knowledge and belief.

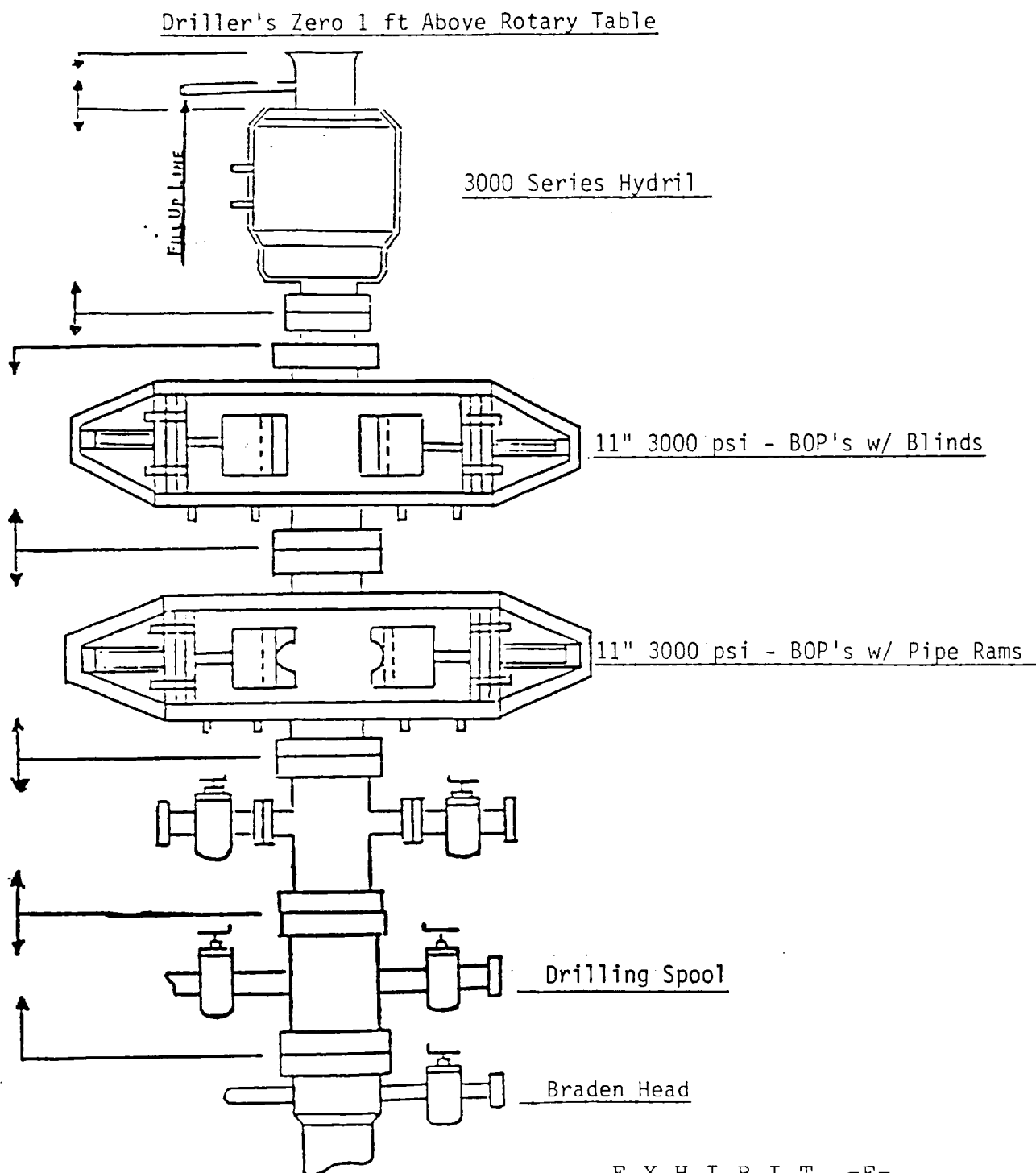
Date Surveyed
AUGUST 2, 1988

Registered Professional Engineer
and/or Land Surveyor
Max A. Schuman
MAX A. SCHUMAN

Certificate No. **1510**



B T A O I L P R O D U C E R S



E X H I B I T - F -

8809 JV-P Puckett
Well No. 1
1880' FNL & 1880' FEL
Sec. 25, T-17-S, R-31-E
Eddy County, N.M.

SUPPLEMENTAL DRILLING DATA

BTA OIL PRODUCERS

8809 JV-P Puckett, Well No. 1

1. SURFACE FORMATION: Quaternary

2. ESTIMATED TOPS OF GEOLOGICAL MARKERS:

Anhydrite	579'
Queen	2,929'
San Andres	3,729'
Glorieta	5,279'
Paddock	5,435'
Abo Shale	7,004'
Abo Reef	7,079'

3. ANTICIPATED POSSIBLE HYDROCARBON BEARING ZONES:

Queen	2,929'
San Andres	3,729'
Glorieta	5,279'
Paddock	5,435'
Abo Reef	7,079'

4. PROPOSED CASING AND CEMENTING PROGRAM:

<u>Casing Size</u>	<u>Setting Depth</u>		<u>Weight</u>	<u>Grade</u>	<u>Joint</u>
	<u>From</u>	<u>To</u>			
13-3/8"	0	400	54.5#	J-55	STC
8-5/8"	0	4,150'	24# & 32#	K-55	STC
5-1/2"	0	8,500'	17#	K-55	LTC

Equivalent or adequate grades and weights of casing may be substituted at time casing is run, depending upon availability.

13-3/8" casing will be cemented with approximately 550 sacks of Class "C" with 2% CaCl₂ cement to circulate to surface.

8-5/8" casing will be cemented with sufficient light cement, tailed in with 200 sacks of Class "C" cement, to circulate to surface.

5-1/2" casing will be cemented with sufficient light cement, tailed in with 600 sacks of Class "H" cement, to tie back into the intermediate casing.

5. PRESSURE CONTROL EQUIPMENT:

Blowout prevention equipment will consist of dual 3,000 psi working pressure, ram type preventers.

A BOP sketch is attached. See Exhibit "F".

6. CIRCULATING MEDIUM:

Surface to 400 feet: Fresh water with lime or gel as needed for viscosity control.

400 feet to 4,150 feet: Brine conditioned as necessary for viscosity control.

4,150 feet to 8,500 feet: Water base drilling fluid conditioned as necessary for control of viscosity, pH, and water-loss. Weighted as necessary for well control.

7. AUXILIARY EQUIPMENT:

Drill string safety valves will be maintained on the rig floor while drilling operations are in progress.

8. TESTING, LOGGING, AND CORING PROGRAMS:

Drill stem tests will be made when samples, drilling time, and other data indicate a test is warranted.

It is planned that electric logs will include Gamma Ray-CNL and FDC logs and dual laterologs.

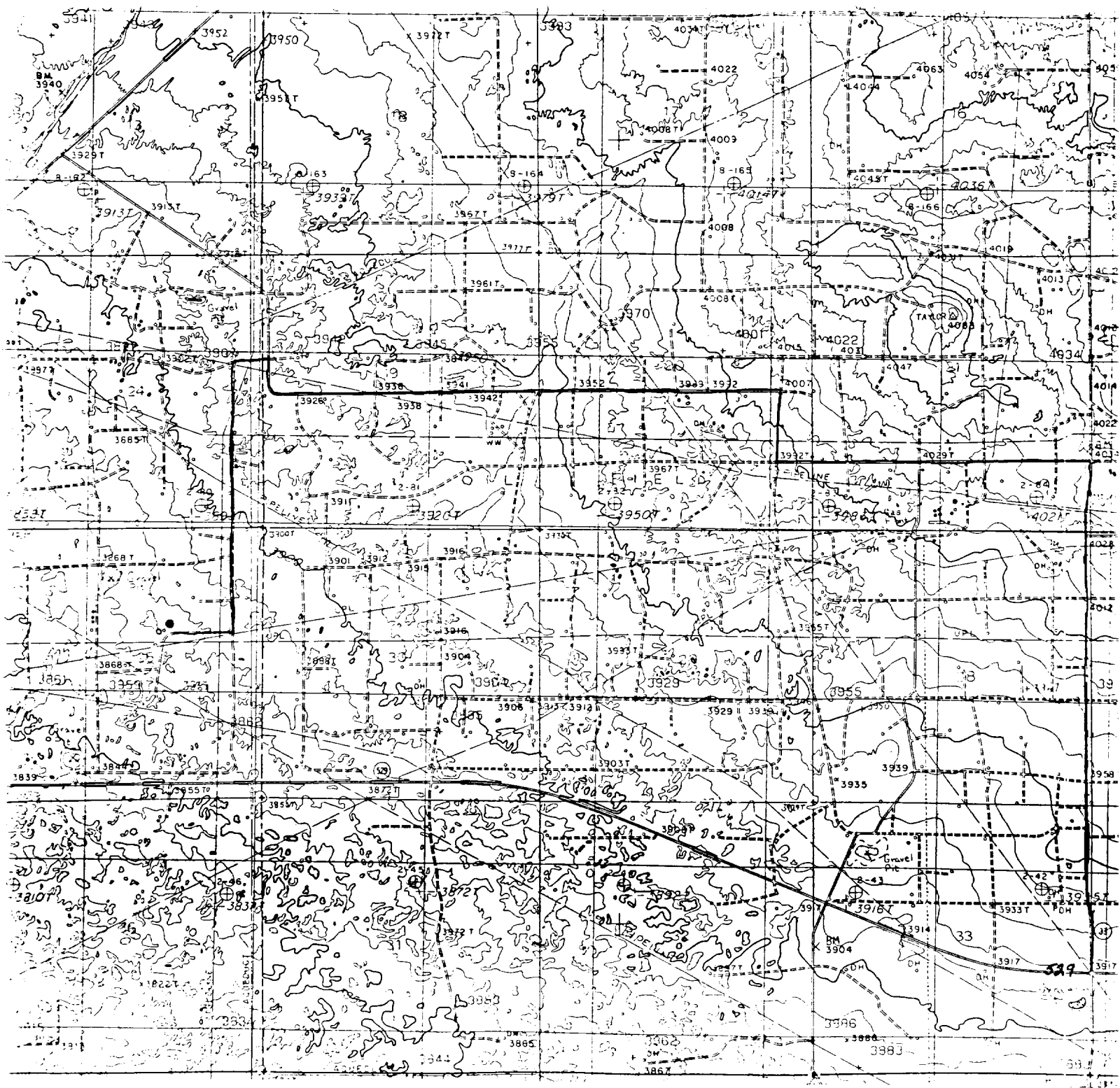
No coring is planned.

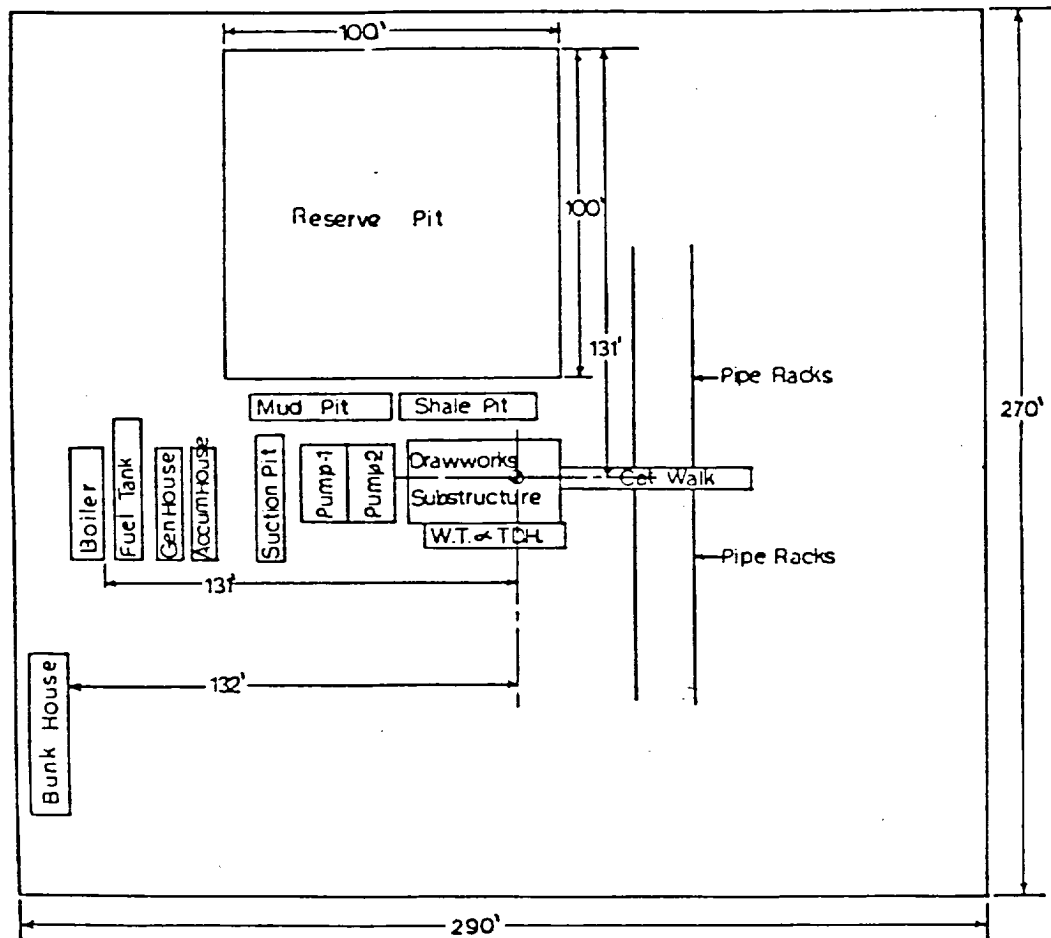
9. ABNORMAL PRESSURES AND TEMPERATURES:

No abnormal pressures or temperatures are anticipated.

10. ANTICIPATED STARTING DATE:

It is planned that work will commence as soon as this application is approved. Drilling and completion operations will take approximately 45 days.





E X H I B I T -E-

8809 JV-P Puckett
 Well No. 1
 1880' FNL & 1880' FEL
 Sec. 25, T-17-S, R-31-E
 Eddy County, N.M.