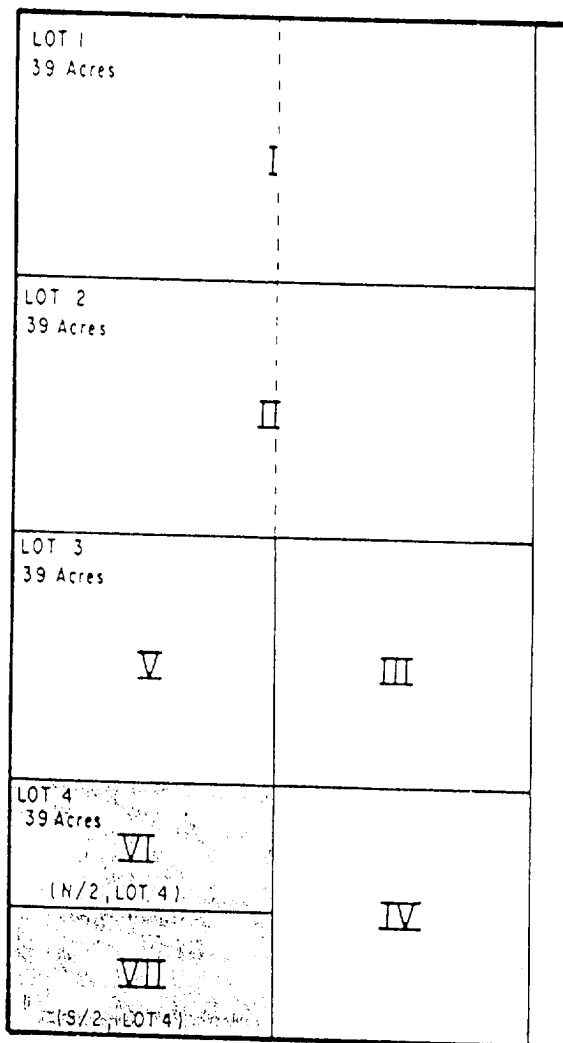


EXHIBIT _____

HUMPHREYS PROSPECT

Plat Denoting Tracts set forth in that
 certain Summary of Leasehold and Mineral Owners
 dated August 24, 1988 covering the
 W/2 of Section 31, T-18-S, R-26-E,
 Eddy County, New Mexico



W/2 Section 31 = 316 Net Acres

BEFORE EXAMINER STOGNER

Oil Conservation Division

TERRA Exhibit No. 1

Case No. 9472