

NEW MEXICO OIL CONSERVATION COMMISSION
WE. LOCATION AND ACREAGE DEDICATION PLAT

Form C-102
Supersedes C-128
Effective 1-1-65

All distances must be from the outer boundaries of the Section.

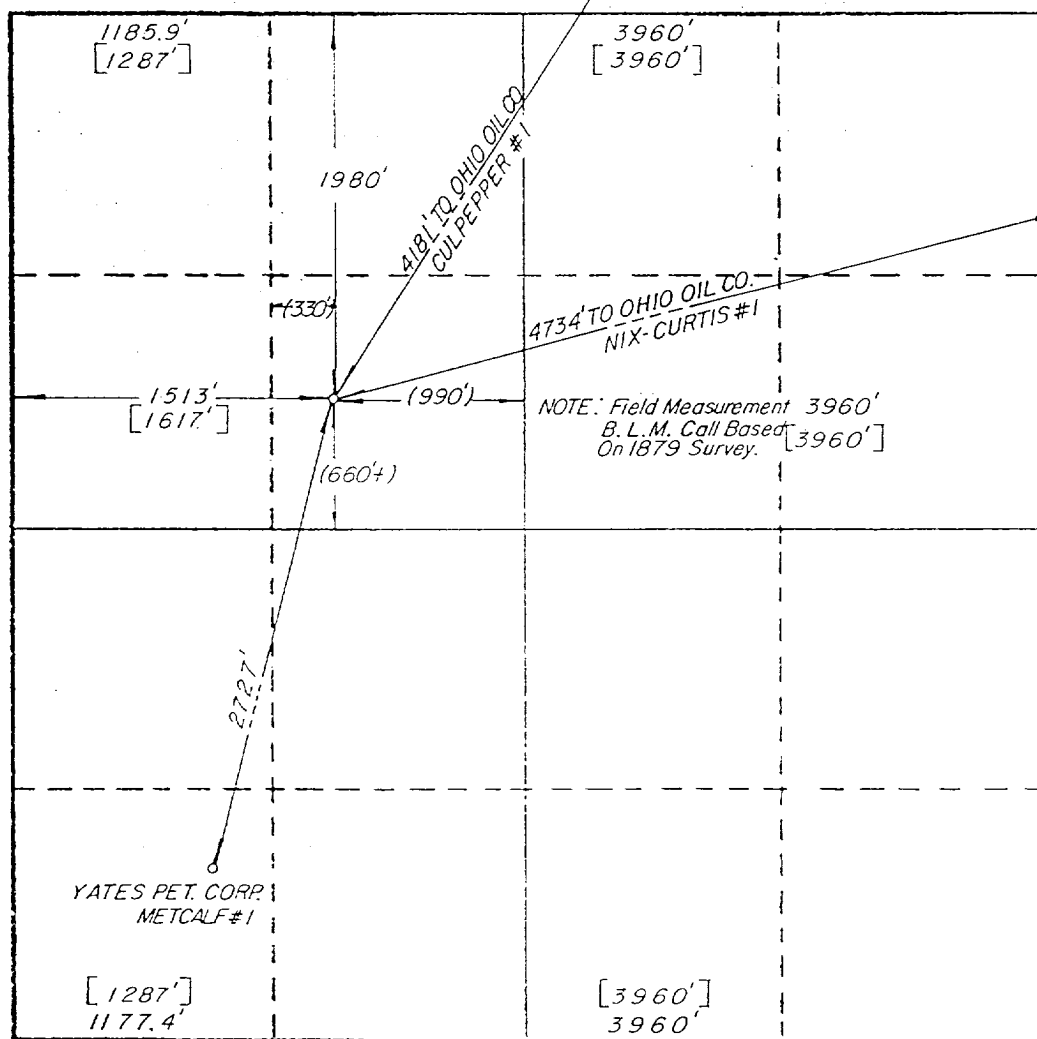
Operator TERRA RESOURCES, INC.		Lease SLEEPY		Well No. #1	
Unit Letter F	Section 31	Township 18-SOUTH	Range 26-EAST	County EDDY	
Actual Footage Location of Well: 1980 feet from the NORTH line and 1513 feet from the WEST line					
Ground Level Elev. 3468'	Producing Formation MORROW		Pool Atoka Penn VLD. Boy MORROW		Dedicated Acreage: 316 Acres

1. Outline the acreage dedicated to the subject well by colored pencil or hatchure marks on the plat below.
2. If more than one lease is dedicated to the well, outline each and identify the ownership thereof (both as to working interest and royalty). See attachment
3. If more than one lease of different ownership is dedicated to the well, have the interests of all owners been consolidated by communitization, unitization, force-pooling, etc? Force Pooling hearing 9/20/88.

☒ Yes ☐ No If answer is "yes," type of consolidation Force Pooling

If answer is "no," list the owners and tract descriptions which have actually been consolidated. (Use reverse side of this form if necessary.)

No allowable will be assigned to the well until all interests have been consolidated (by communitization, unitization, forced-pooling, or otherwise) or until a non-standard unit, eliminating such interests, has been approved by the Commission.



CERTIFICATION

I hereby certify that the information contained herein is true and complete to the best of my knowledge and belief.

[Signature]
Name

Operations Engineer

Position

Terra Resources, Inc.

Company

10-6-88

Date

I hereby certify that the well location shown on this plat was plotted from field notes of actual surveys made by me or under my supervision, and that the same is true and correct to the best of my knowledge and belief.

AUGUST 22, 1988

Date Surveyed

Richard B. Duniven

Registered Professional Engineer
and/or Land Surveyor

[Signature]

Certified to 4882