

APPLICATION FOR PERMIT TO DRILL, DEEPEN, OR PLUG BACK

1a. TYPE OF WORK

DRILL ☒

DEEPEN ☐

PLUG BACK ☐

b. TYPE OF WELL

OIL
WELL ☒

GAS
WELL ☐

OTHER

SINGLE
ZONE ☐

MULTIPLE
ZONE ☐

2. NAME OF OPERATOR

Harvey E. Yates Company

RECEIVED

3. ADDRESS OF OPERATOR

P.O. Box 1933, Roswell, New Mexico 88202

MAY 30 89

4. LOCATION OF WELL (Report location clearly and in accordance with any State requirements.)

At surface 1980' FNL & 660' FWL

O. C. D.

ARTESIA, OFFICE

At proposed prod. zone

same

14. DISTANCE IN MILES AND DIRECTION FROM NEAREST TOWN OR POST OFFICE*

9 miles S.W. of Maljamar, NM

10. DISTANCE FROM PROPOSED*

LOCATION TO NEAREST
PROPERTY OR LEASE LINE, FT.
(Also to nearest d/rig. unit line, if any)

660'

18. NO. OF ACRES IN LEASE

320

17. NO. OF ACRES ASSIGNED
TO THIS WELL

40

19. DISTANCE FROM PROPOSED LOCATION*

TO NEAREST WELL, DRILLING, COMPLETED,
OR APPLIED FOR, ON THIS LEASE, FT.

1650'

19. PROPOSED DEPTH

8580

20. ROTARY OR CABLE TOOLS

Rotary

21. ELEVATIONS (Show whether DF, RT, GR, etc.)

3656.0 GL

22. APPROX. DATE WORK WILL START*

ASAP

23.

PROPOSED CASING AND CEMENTING PROGRAM

SIZE OF HOLE	SIZE OF CASING	WEIGHT PER FOOT	SETTING DEPTH	QUANTITY OF CEMENT
17 1/2	13 3/8	54.5	350	Circ to surface
12 1/4	8 5/8	32 & 24	2050	Circ to surface
7 7/8	5 1/2	17	8580	600' above pay

Mud Program

0 - 350 FW w/paper
350 - 2050 BW
2050 - 8580 FW mud

APPROVAL SUBJECT TO
FEDERAL REQUIREMENTS AND
STATE REGULATIONS
APPROVED

POST ID-1
NL & API
6-2-89

IN ABOVE SPACE DESCRIBE PROPOSED PROGRAM: If proposal is to deepen or plug back, give data on present productive zone and proposed new productive zone. If proposal is to drill or deepen directionally, give pertinent data on subsurface locations and measured and true vertical depths. Give blowout preventer program, if any.

24.

SIGNED

N. H. Young

NM Young

TITLE

Drilling Superintendent

DATE

5/3/89

(This space for Federal or State office use)

PERMIT NO.

APPROVAL DATE

APPROVED BY

TITLE

DATE

5-23-89

CONDITIONS OF APPROVAL, IF ANY:

*See Instructions On Reverse Side

APR 26 1989

Submit to Appropriate
District Office
State Lease - 4 copies
Fee Lease - 3 copies

State of New Mexico
Energy, Minerals and Natural Resources Department

Form C-102
Revised 1-1-89

OIL CONSERVATION DIVISION

DISTRICT I
P.O. Box 1980, Hobbs, NM 88240

P.O. Box 2088

Santa Fe, New Mexico 87504-2088

DISTRICT II
P.O. Drawer DD, Artesia, NM 88210

DISTRICT III
1000 Rio Brazos Rd., Aztec, NM 87410

WELL LOCATION AND ACREAGE DEDICATION PLAT

All Distances must be from the outer boundaries of the section

Operator Harvey E. Yates Co.			Lease P.M.S. 8 Federal		Well No. 3
Unit Letter E	Section 8	Township 18 South	Range 31 East	County Eddy	
Actual Footage Location of Well: 1980 feet from the north line and 660 feet from the west line					
Ground level Elev. 3656.0'	Producing Formation Bone Spring		Pool North Shugart		Dedicated Acreage: 40 Acres

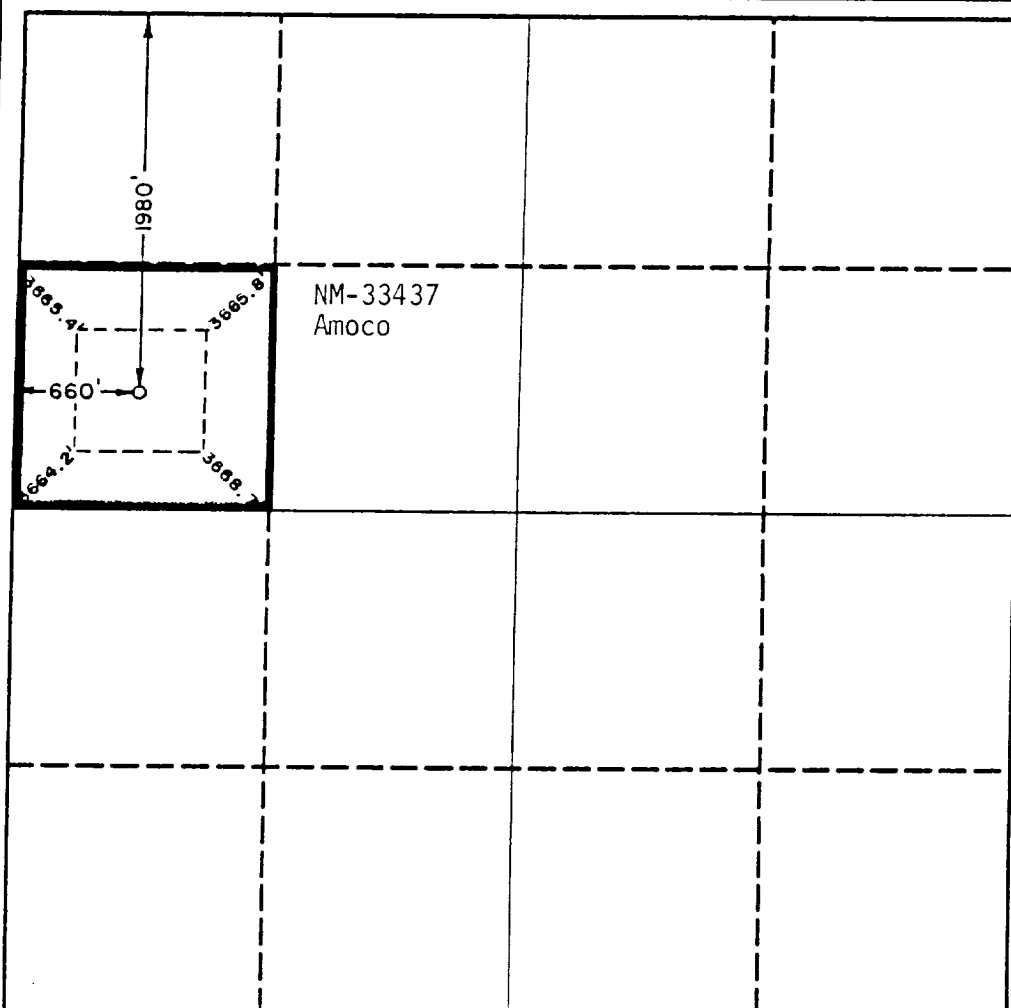
1. Outline the acreage dedicated to the subject well by colored pencil or hachure marks on the plat below.
2. If more than one lease is dedicated to the well, outline each and identify the ownership thereof (both as to working interest and royalty).
3. If more than one lease of different ownership is dedicated to the well, have the interest of all owners been consolidated by communitization, unitization, force-pooling, etc.?

☐ Yes
 ☐ No

If answer is "yes" type of consolidation _____

If answer is "no" list the owners and tract descriptions which have actually been consolidated. (Use reverse side of this form if necessary.) _____

No allowable will be assigned to the well until all interests have been consolidated (by communitization, unitization, forced-pooling, or otherwise) or until a non-standard unit, eliminating such interest, has been approved by the Division.



OPERATOR CERTIFICATION

I hereby certify that the information contained herein is true and complete to the best of my knowledge and belief.

Signature

Printed Name

NM Young

Position

Drilling Superintendent

Company

Harvey E. Yates Company

Date

May 3, 1989

SURVEYOR CERTIFICATION

I hereby certify that the well location shown on this plat was plotted from field notes of actual surveys made by me or under my supervision, and that the same is true and correct to the best of my knowledge and belief.

Date Surveyed

April 21, 1989

Signature & Seal of Professional Surveyor

Certificate No.

JOHN W. WEST,

878

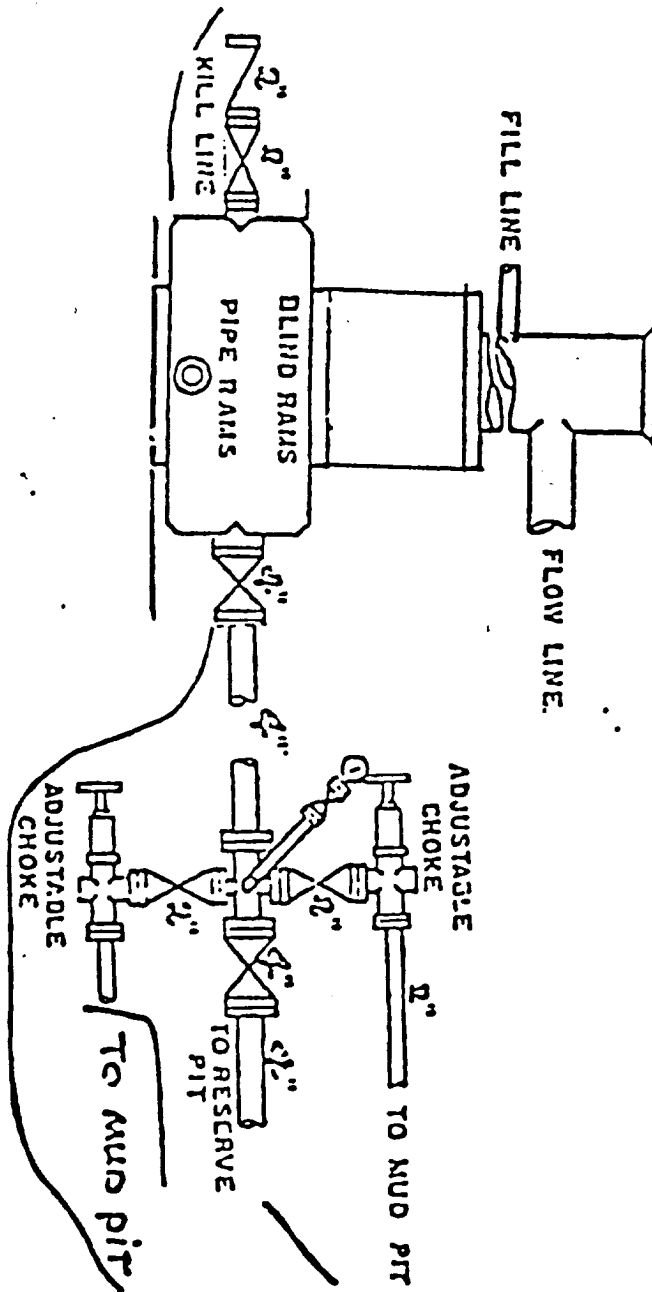
RONALD J. EIDSON,

3239

EXHIBIT C

Harvey E. Yates Co.
PMS 8 Federal #3
Sec. 8 T-18S R-31E
Eddy Co., New Mexico

900 Series



Application

HARVEY E. YATES COMPANY
PMS "8" Federal #3
Section 8, T18S, R31E
Eddy County, New Mexico

In conjunction with Form 3160-3, Application for Permit to Drill the Subject well in Section 8, Township 18 South, Range 31 East, Eddy County, New Mexico, Harvey E. Yates Company submits the following ten items of pertinent information in accordance with Bureau of Land Management requirements:

1. The geologic surface formation is quaternary alluvium and bolson deposits and other surficial deposits.
2. The estimated tops of geologic markers are as follows:

Rustler	570'	Grayburg	3587'
Yates	1995'	San Andres	4000'
Seven Rivers	2385'	Delaware Sand	4450'
Bowers	2820'	Bone Spring	5095'
Queen	3070'	TD	8580'
Penrose	3285'		

3. We do not anticipate finding water but have listed the formation in which we anticipate finding oil or gas.

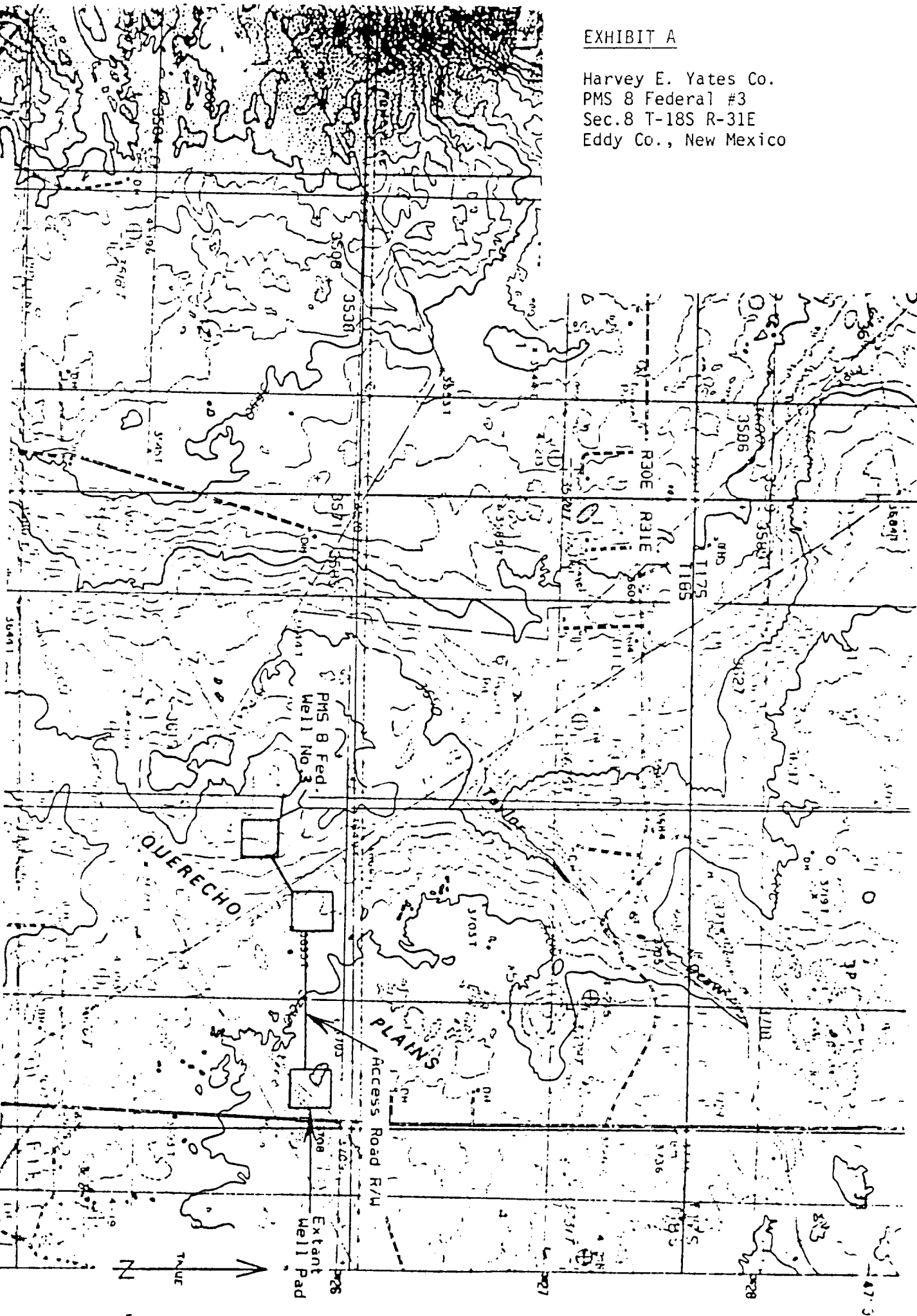
Bone Spring 5095'

4. Proposed casing program: See Form 3160-3
5. Pressure control equipment: See Exhibit C.
6. Mud program: See Form 3160-3.
7. Auxiliary equipment: Blowout preventer
8. Testing, logging and coring programs: We do not plan to core or DST. The planned logs are C-ND w/GR and Caliper and DLL-MSFL.
9. No abnormal pressures or temperatures are anticipated.
10. Anticipated starting date: As soon as possible.

EXHIBIT A

Harvey E. Yates Co.
PMS 8 Federal #3
Sec. 8 T-18S R-31E
Eddy Co., New Mexico

Map showing the location of the Harvey E. Yates Company PMS 8 Federal Well No. 3, and access road Rights-of-Way. 118S, R31E, Section 8 & Section 5, Eddy County, New Mexico. Squares show locations of well pads; solid lines show locations of access road R's/W. U.S.G.S. 7.5 minute series, LOCO HILLS, NEW MEXICO, 1985. ASC Project 88-207.



Harvey E. Yates Co.
 PMS 8 Federal #3
 Sec. 8 T-18S R-31E
 Eddy Co., New Mexico

EXHIBIT D

