

THE OIL & GAS COMMISSION  
UNITED STATES  
DEPARTMENT OF THE INTERIOR  
BUREAU OF LAND MANAGEMENT

SUBMIT IN 1. Llicate\*  
(Other instructions on  
reverse side)

30-015-26136 4/84  
Form approved.  
Budget Bureau No. 1004-0136  
Expires August 31, 1985

APPLICATION FOR PERMIT TO DRILL, DEEPEN, OR PLUG BACK

1a. TYPE OF WORK

DRILL ☒

DEEPEN ☐

PLUG BACK ☐

b. TYPE OF WELL

OIL  
WELL ☒

GAS  
WELL ☐

OTHER

SINGLE  
ZONE ☒

MULTIPLE  
ZONE ☐

2. NAME OF OPERATOR

Enron Oil & Gas Company

RECEIVED

3. ADDRESS OF OPERATOR

P. O. Box 2267, Midland, Texas 79702

4. LOCATION OF WELL (Report location clearly and in accordance with any State requirements.)

At surface

1980' FNL & 1980' FWL

At proposed prod. zone

1980' FNL & 1980' FWL

14. DISTANCE IN MILES AND DIRECTION FROM NEAREST TOWN OR POST OFFICE\*

12 miles SE from Loco Hills

15. DISTANCE FROM PROPOSED\*

LOCATION TO NEAREST  
PROPERTY OR LEASE LINE, FT. 1980  
(Also to nearest drig. unit line, if any) 660

16. NO. OF ACRES IN LEASE

308.25

17. NO. OF ACRES ASSIGNED  
TO THIS WELL

40

18. DISTANCE FROM PROPOSED LOCATION\*  
TO NEAREST WELL, DRILLING, COMPLETED,  
OR APPLIED FOR, ON THIS LEASE, FT.

1000'

19. PROPOSED DEPTH

8600'

20. ROTARY OR CABLE TOOLS

Rotary

21. ELEVATIONS (Show whether DF, RT, GR, etc.)

3624.3' GR

22. APPROX. DATE WORK WILL START\*

6/15/89

23.

PROPOSED CASING AND CEMENTING PROGRAM

SIZE OF HOLE	SIZE OF CASING	WEIGHT PER FOOT	SETTING DEPTH	QUANTITY OF CEMENT
17-1/2"	11-3/4"	42# H-40 ST&C	650'	950 sacks Circulated
11"	8-5/8"	24# K-55 ST&C	2500'	650 sacks Circulated
7-7/8"	5-1/2"	17# K-55 ST&C	8600'	1550 sacks

BOP - Install at 2500 feet with 5000# cap.

Gas is dedicated.

APPROVAL SUBJECT TO  
GENERAL REQUIREMENTS AND  
SPECIAL STIPULATIONS  
ATTACHED

POST ID-1  
N.R. API  
6-23-89

IN ABOVE SPACE DESCRIBE PROPOSED PROGRAM: If proposal is to deepen or plug back, give data on present productive zone and proposed new productive zone. If proposal is to drill or deepen directionally, give pertinent data on subsurface locations and measured and true vertical depths. Give blowout preventer program, if any.

24.

SIGNED

Betty Gildon

TITLE

Regulatory Analyst

DATE

5/25/89

(This space for Federal or State office use)

PERMIT NO.

APPROVAL DATE

APPROVED BY

Jose Duerr

TITLE

AREA MANAGER  
CARLSBAD RESOURCE AREA

DATE

6-13-89

CONDITIONS OF APPROVAL, IF ANY:

\*See Instructions On Reverse Side

Submit to Appropriate  
District Office  
State Lease - 4 copies  
Fee Lease - 3 copies

State of New Mexico  
Energy, Minerals and Natural Resources Department

Form C-102  
Revised 1-1-89

OIL CONSERVATION DIVISION

P.O. Box 2088

Santa Fe, New Mexico 87504-2088

DISTRICT I

P.O. Box 1980, Hobbs, NM 88240

DISTRICT II

P.O. Drawer DD, Artesia, NM 88210

DISTRICT III

1000 Rio Brazos Rd., Aztec, NM 87410

WELL LOCATION AND ACREAGE DEDICATION PLAT

All Distances must be from the outer boundaries of the section

Operator Enron Oil & Gas Company		Lease Sand 7 Federal		Well No. 2	
Unit Letter F	Section 7	Township 1S South	Range 31 East	County NMPM	Eddy
Actual Footage Location of Well: 1980 feet from the north line and 1980 feet from the west line					
Ground level Elev. 3624.3'	Producing Formation Bone Spring	Pool Shugart, North	Dedicated Acreage: 40 Acres		

1. Outline the acreage dedicated to the subject well by colored pencil or hatchure marks on the plat below.
2. If more than one lease is dedicated to the well, outline each and identify the ownership thereof (both as to working interest and royalty).
3. If more than one lease of different ownership is dedicated to the well, have the interest of all owners been consolidated by communitization, unitization, force-pooling, etc.?  
☐ Yes ☐ No If answer is "yes" type of consolidation \_\_\_\_\_  
If answer is "no" list the owners and tract descriptions which have actually been consolidated. (Use reverse side of this form if necessary.)  
No allowable will be assigned to the well until all interests have been consolidated (by communitization, unitization, forced-pooling, or otherwise) or until a non-standard unit, eliminating such interest, has been approved by the Division.

OPERATOR CERTIFICATION

I hereby certify that the information contained herein is true and complete to the best of my knowledge and belief.

*Betty Gildon*  
Signature

Betty Gildon

Printed Name

Regulatory Analyst

Position

Enron Oil & Gas Company

Company

May 25, 1989

Date

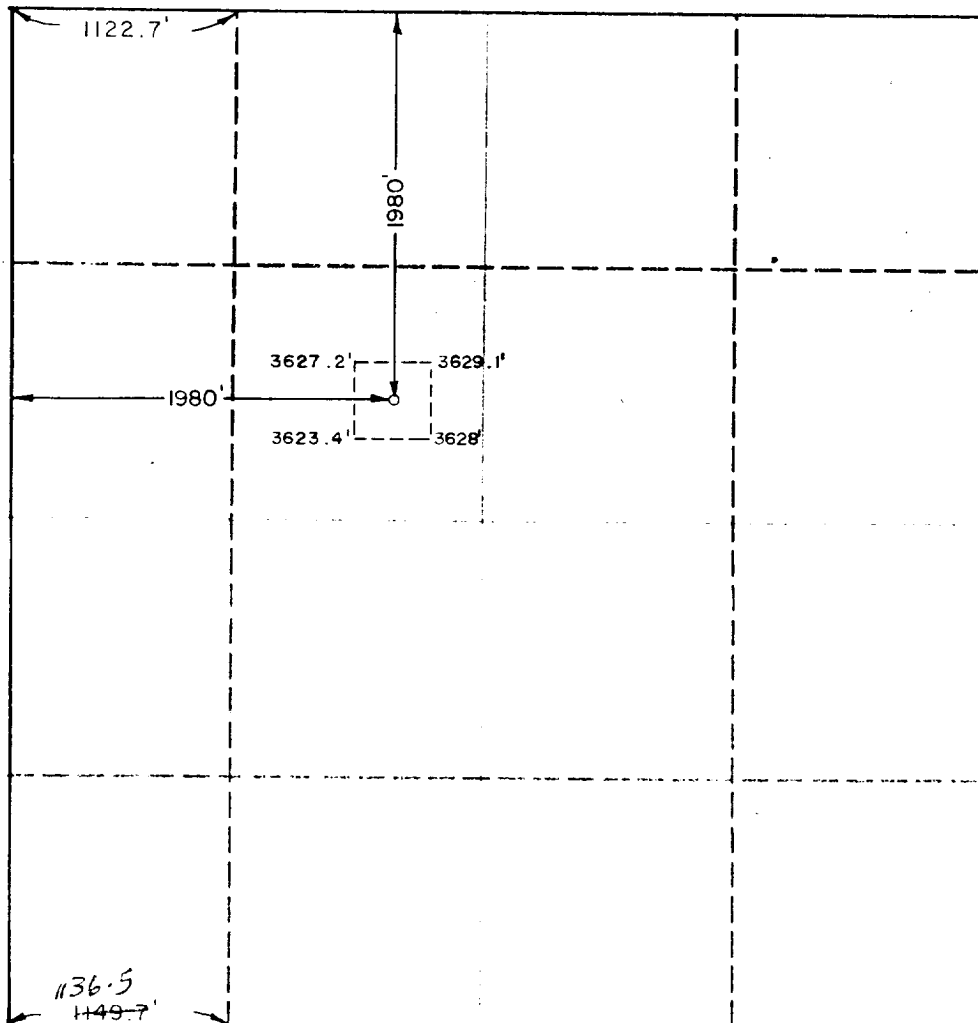
SURVEYOR CERTIFICATION

I hereby certify that the well location shown on this plat was plotted from field notes of actual surveys made by me or under my supervision, and that the same is true and correct to the best of my knowledge and belief.

Date Surveyed

May 9, 1989

Signature & Seal  
Professional



1136.5  
1149.7

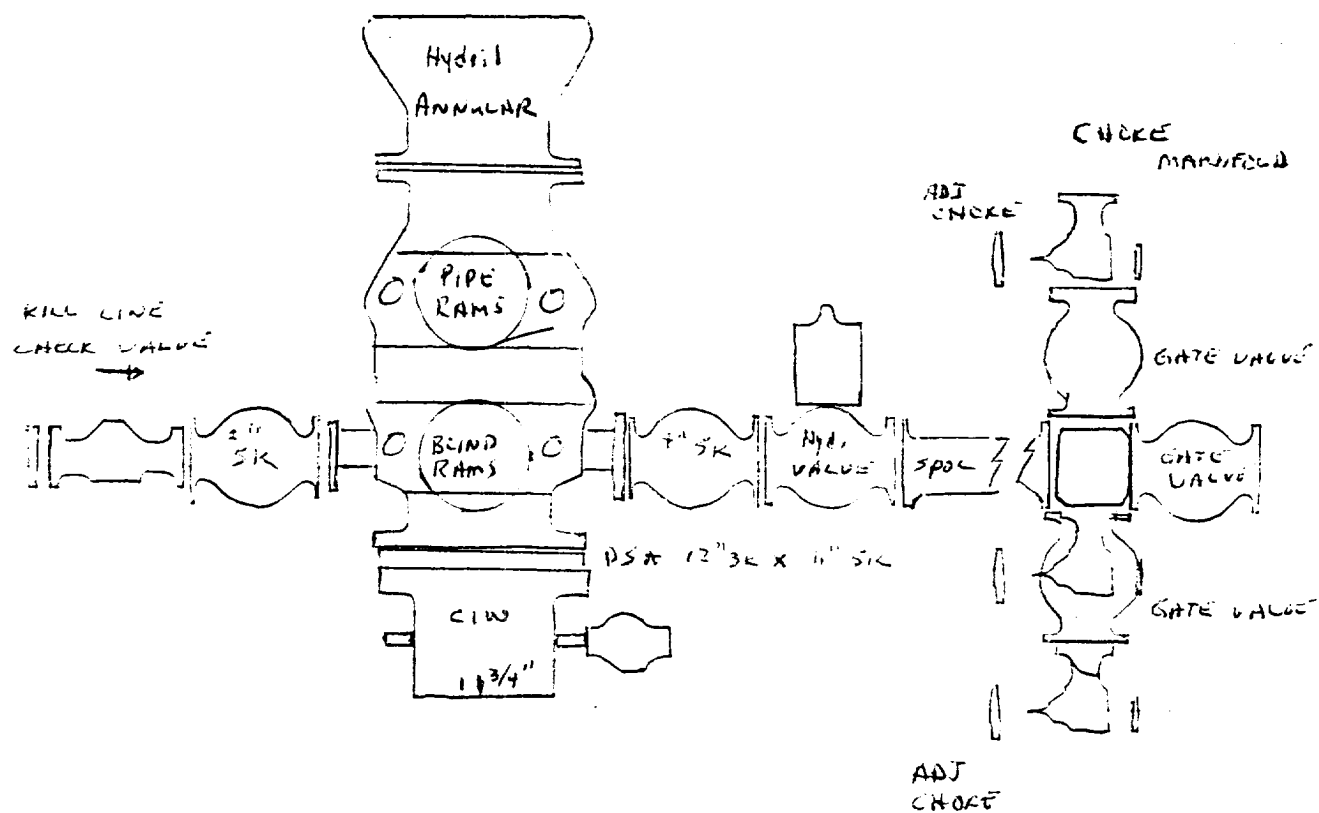


EXHIBIT "C"

APPLICATION FOR PERMIT TO DRILL

1. The geologic surface formation is Quaternary.
2. The estimated tops of important geologic markers are:
  1. 1st Bone Spring Sand 7290
  2. 2nd Bone Spring Carbonate 7600
  3. 2nd Bone Spring Sand 8260  
(Roche Zone)
  4. \_\_\_\_\_
  5. \_\_\_\_\_
  6. \_\_\_\_\_
  7. \_\_\_\_\_
  8. \_\_\_\_\_
  9. \_\_\_\_\_
  10. \_\_\_\_\_
3. Depths at which oil, water, or gas bearing formations are expected to be encountered.

Bone Spring 7290 - 8600

4. Brief description of testing, logging, and coring programs.

Drill Stem test as necessary  
Gamma Ray: Surface - TD  
Sonic and/or Neutron Density: 2300'  $\pm$  to TD  
Mud Logger: 2300'  $\pm$  to TD  
No coring anticipated.

5. Any anticipated abnormal pressures or temperatures expected? Any potential hazards - H<sub>2</sub>S?

None anticipated

No H<sub>2</sub>S zones expected.

1. (A) Pressure control equipment to be used.

1 - 5000# WP Cameron Iron Works double type "U" Blowout preventor with pipe rams and blind rams.

(B) Pressure ratings (or API series).

1 - 1500 series - 5000# WP

(C) Testing procedures and frequency.

BOP will be tested at installation point as indicated on Application for Permit to Drill (Form 3160-3).

(D) Schematic Diagram.

Attached Exhibit "C"

2. Mud Program

Type and Characteristics

0 - 650'	8.5-8.8 Native
650 -2500'	10.0 Brine water
2500 -8600'	8.4 Fresh water

Quantities and types of weighting material to be maintained

1000 sacks barite on location.

.7 MILE

CALICHE PIT

TANK BATTERY

LEASE ROAD

.9 MILES

.4 MILE

.4 MILE

.2 MILE

.3 MILE

.3 MILE

ROCHE FEDERAL # 1

ROCHE FEDERAL # 2

ROCHE FEDERAL # 3

ALLIED FEDERAL # 1

ALLIED FEDERAL

SAND FEDERAL # 1

SAND # 2

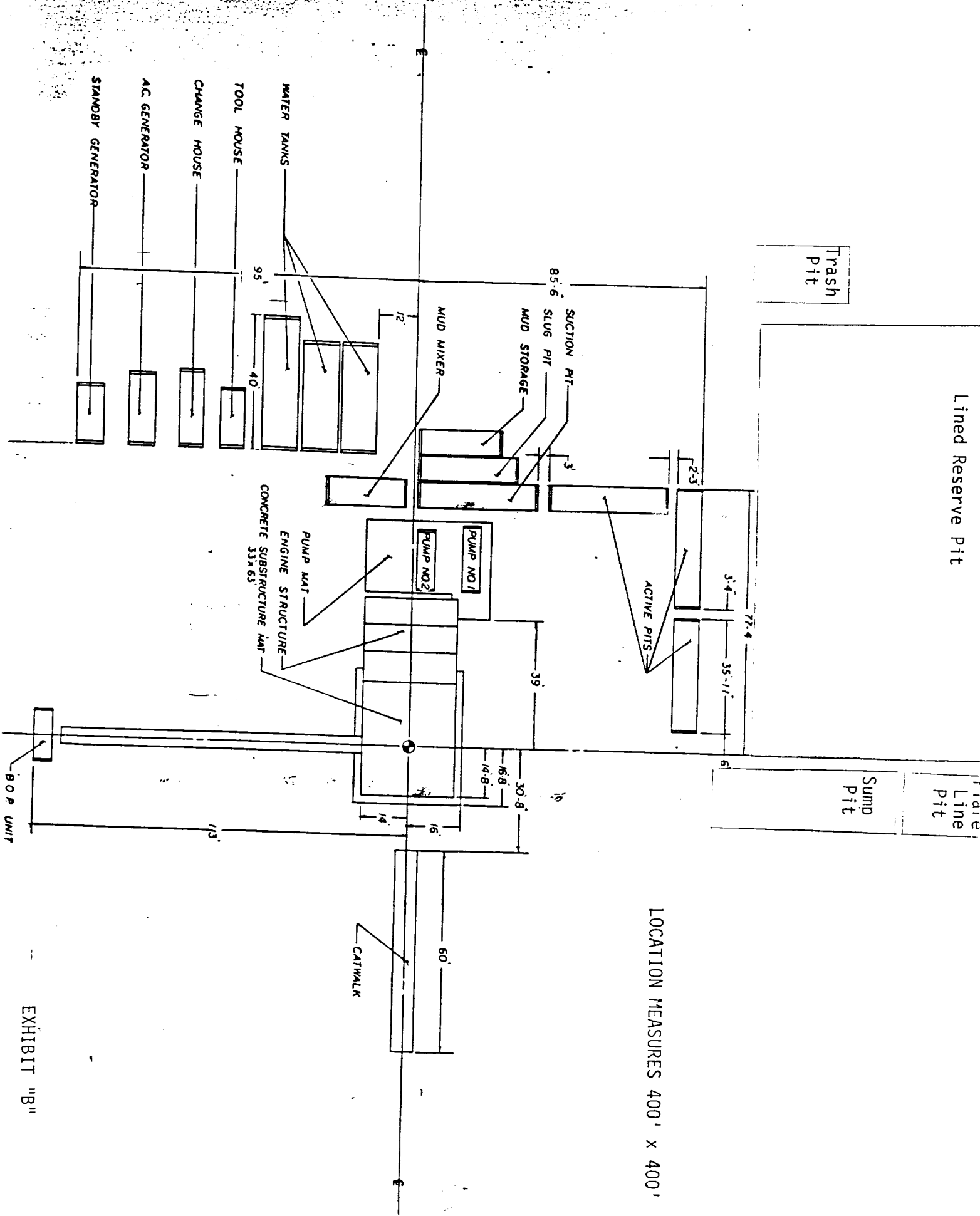
CATTLE GUARD

Proposed Access Road

RANCH FENCE

2.2 MILES

CALICHE PIT



LOCATION MEASURES 400' x 400'