

UNITED STATES
DEPARTMENT OF THE INTERIOR
BUREAU OF LAND MANAGEMENT

88210

APPLICATION FOR PERMIT TO DRILL, DEEPEN, OR PLUG BACK

1A. TYPE OF WORK

DRILL ☒

DEEPEN ☐

PLUG BACK ☐

B. TYPE OF WELL

OIL
WELL ☒

GAS
WELL ☐

OTHER

SINGLE
ZONE ☐

MULTIPLE
ZONE ☐

2. NAME OF OPERATOR

Harvey E. Yates Company

3. ADDRESS OF OPERATOR

P.O. Box 1933, Roswell, New Mexico 88202

4. LOCATION OF WELL (Report location clearly and in accordance with any State requirements.)

At surface

1650' FSL & 330' FWL

At proposed prod. zone

same

14. DISTANCE IN MILES AND DIRECTION FROM NEAREST TOWN OR POST OFFICE*

8 miles SE of Loco Hills, N.M.

10. DISTANCE FROM PROPOSED*

LOCATION TO NEAREST
PROPERTY OR LEASE LINE, FT.
(Also to nearest drlg. unit line, if any)

330'

18. DISTANCE FROM PROPOSED LOCATION*

TO NEAREST WELL, DRILLING, COMPLETED,
OR APPLIED FOR, ON THIS LEASE, FT.

1335

16. NO. OF ACRES IN LEASE

160

19. PROPOSED DEPTH

8500

17. NO. OF ACRES ASSIGNED
TO THIS WELL

40

20. ROTARY OR CABLE TOOLS

Rotary

21. ELEVATIONS (Show whether DF, RT, GR, etc.)

3660.0 GL

22. APPROX. DATE WORK WILL START*

ASAP

PROPOSED CASING AND CEMENTING PROGRAM

SIZE OF HOLE	SIZE OF CASING	WEIGHT PER FOOT	SETTING DEPTH	QUANTITY OF CEMENT
17 1/2	13 3/8	54.5	350	Circ to surface
12 1/4	8 5/8	32 & 24	2000	Circ to surface
7 7/8	5 1/2	17	8500	600' above pay

MUD PROGRAM:

0 - 350 FW w/paper
350 - 2000 Brine water
2000 - 8500 FW mud

APPROVAL SUBJECT TO
GENERAL REQUIREMENTS AND
SPECIAL REGULATIONS
ATTACHED

IN ABOVE SPACE DESCRIBE PROPOSED PROGRAM: If proposal is to deepen or plug back, give data on present productive zone and proposed new productive zone. If proposal is to drill or deepen directionally, give pertinent data on subsurface locations and measured and true vertical depths. Give blowout preventer program, if any.

SIGNED W. M. Young NM Young TITLE Drilling Superintendent DATE 6/23/89

(This space for Federal or State office use)

PERMIT NO.

APPROVAL DATE

CARLSBAD RESOURCE AREA

APPROVED BY Quendra Poreta

TITLE

DATE 7-14-89

CONDITIONS OF APPROVAL, IF ANY:

*See Instructions On Reverse Side

Title 18 U.S.C. Section 1001, makes it a crime for any person knowingly and willfully to make to any department or agency of the United States any false, fictitious or fraudulent statements or representations as to any matter within its jurisdiction.

Submit to Appropriate
District Office
State Lease - 4 copies
Fee Lease - 3 copies

State of New Mexico
Energy, Minerals and Natural Resources Department

JUN 20 1989

Form C-102
Revised 1-1-89

OIL CONSERVATION DIVISION

P.O. Box 2088
Santa Fe, New Mexico 87504-2088

DISTRICT I
P.O. Box 1980, Hobbs, NM 88240

DISTRICT II
P.O. Drawer DD, Artesia, NM 88210

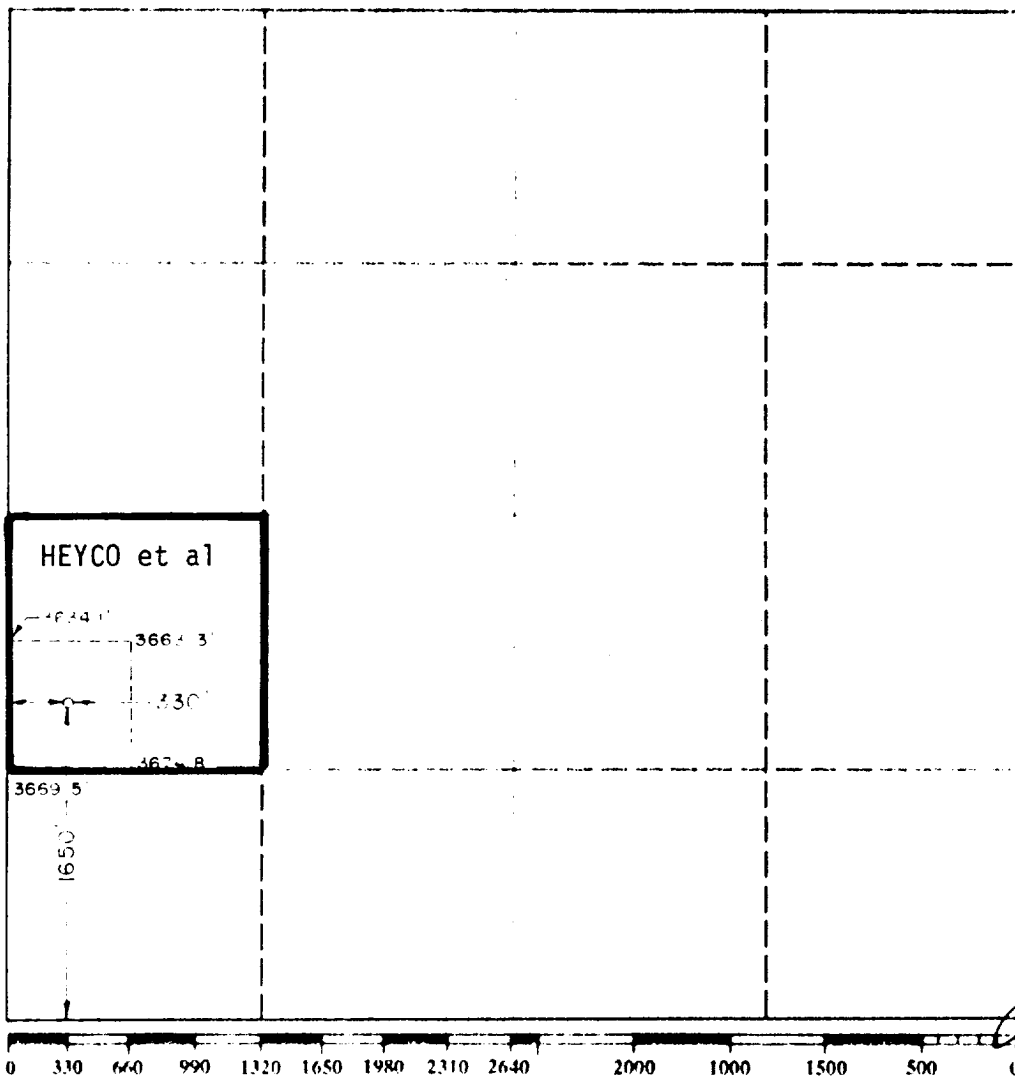
DISTRICT III
1000 Rio Brazos Rd., Aztec, NM 87410

WELL LOCATION AND ACREAGE DEDICATION PLAT

All Distances must be from the outer boundaries of the section

Operator Harvey E. Yates Company			Lease Parker Federal 5		Well No. 3
Unit Letter L	Section 5	Township 18 South	Range 31 East	County NMPM	Eddy
Actual Footage Location of Well:					
1650 feet from the South line and		330 feet from the West line			
Ground level Elev 3660.0		Producing Formation Bone Springs		Dedicated Acreage 40 Acres	
		Pool North Shugart			

- Outline the acreage dedicated to the subject well by colored pencil or hachure marks on the plat below
- If more than one lease is dedicated to the well, outline each and identify the ownership thereof (both as to working interest and royalty).
- If more than one lease of different ownership is dedicated to the well, have the interest of all owners been consolidated by communitization, unitization, force pooling, etc?
☐ Yes ☐ No If answer is "yes" type of consolidation
If answer is "no" list the owners and tract descriptions which have actually been consolidated. (Use reverse side of this form if necessary)
No allowable will be assigned to the well until all interests have been consolidated (by communitization, unitization, forced pooling, or otherwise) or until a non standard unit, eliminating such interest, has been approved by the Division.



OPERATOR CERTIFICATION

I hereby certify that the information contained herein is true and complete to the best of my knowledge and belief

H. M. Young
Signature

NM Young
Printed Name

Drilling Superintendent
Position

Harvey E. Yates Company
Company

June 23, 1989
Date

SURVEYOR CERTIFICATION

I hereby certify that the well location shown on this plat was plotted from field notes of actual surveys made by me or under my supervision and that the same is true and correct to the best of my knowledge and belief

Date Surveyed

June 15, 1989
Signature & Seal
Professional

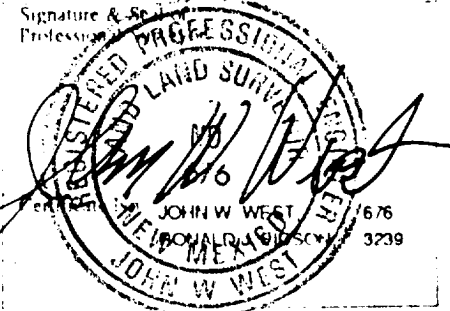
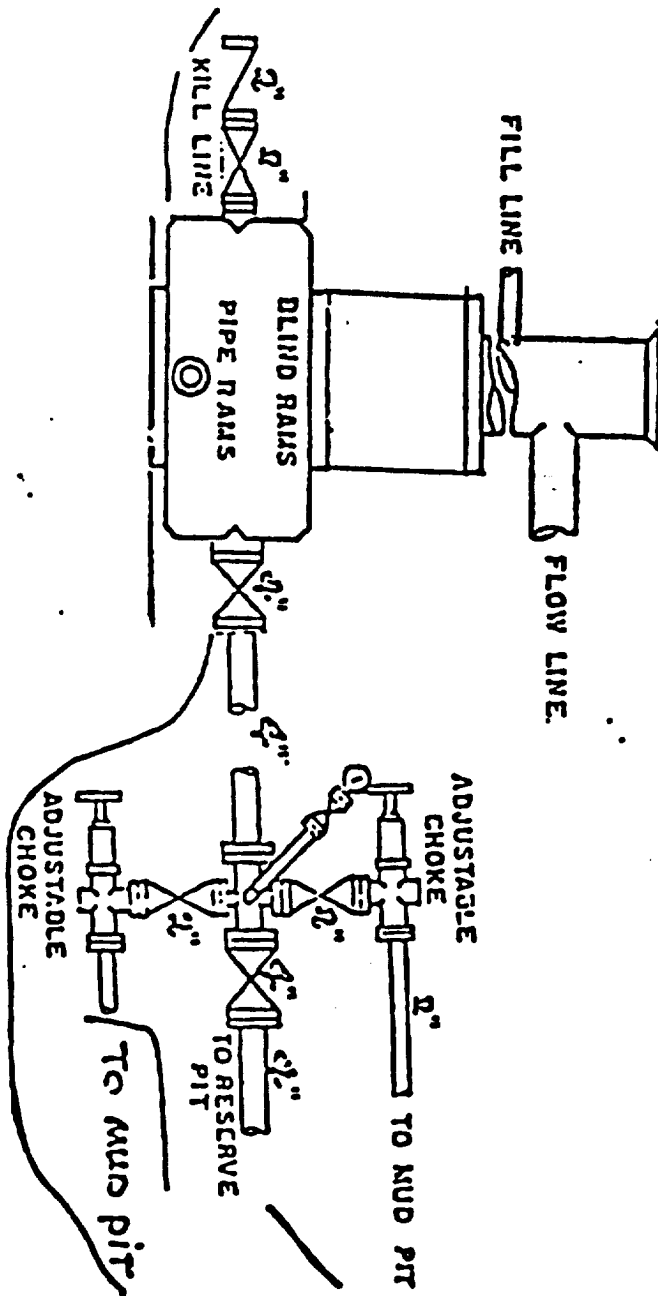


EXHIBIT C

Harvey E. Yates Co.
Parker 5 Federal #3
1650' FSL & 330' FWL
Sec. 5 T-18S R-31E
Lea Co., New Mexico

900 Series



Application

HARVEY E. YATES COMPANY
Parker 5 Feddeal #3
Sec. 5, T18S, R32E
Eddy County, New Mexico

In conjunction with Form 3160-3, Application for Permit to Drill the Subject well in Section 5, Township 18 South, Range 31 East, Eddy County, New Mexico, Harvey E. Yates Company submits the following ten items of pertinent information in accordance with Bureau of Land Management requirements:

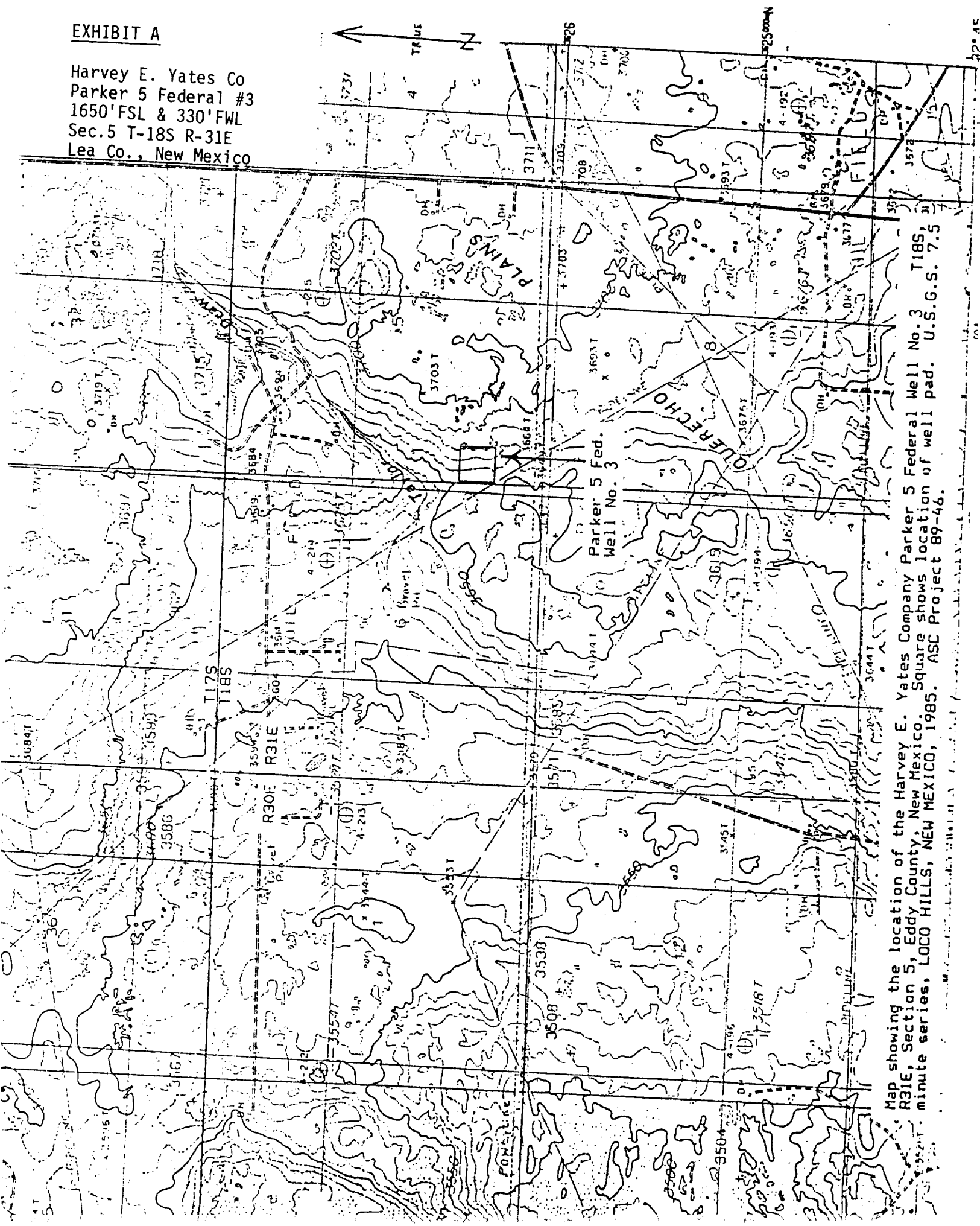
1. The geologic surface formation is quaternary alluvium and bolson deposits and other surficial deposits.
2. The estimated tops of geologic markers are as follows:

Rustler	390'	Grayburg	3460'
Yates	1925'	San Andres	3830'
Seven Rivers	2248'	Delaware Sand	4500'
Bowers	2715'	Bone Spring	4840'
Queen	2960'	TD	8500'
Penrose	3180'		
3. We do not anticipate finding water but have listed the formation in which we anticipate finding oil or gas.

Bone Spring 4840'
4. Proposed casing program: See Form 3160-3
5. Pressure control equipment: See Exhibit C.
Although the rig equipment is 3M rated, this is only a 2M PSI rated well.
6. Mud program: See Form 3160-3.
7. Auxiliary equipment: Blowout preventer
8. Testing, logging and coring programs: We do not plan to core or DST. The planned logs are CND w/GR and Caliper and DLL-MSFL.
9. No abnormal pressures or temperatures are anticipated.
10. Anticipated starting date: As soon as possible.

EXHIBIT A

Harvey E. Yates Co
Parker 5 Federal #3
1650' FSL & 330' FWL
Sec. 5 T-18S R-31E
Lea Co., New Mexico



Map showing the location of the Harvey E. Yates Company Parker 5 Federal Well No. 3 T18S, R31E, Section 5, Eddy County, New Mexico. Square shows location of well pad. U.S.G.S. 7.5 minute series, LOCO HILLS, NEW MEXICO, 1985. ASC Project 89-46.

EXHIBIT D

Harvey E. Yates Co.
Parker 5 Federal #3
1650' FSL & 330' FWL
Sec. 5 T-18S R-31E
Lea Co., New Mexico

