

Submit to Appropriate  
District Office  
State Lease - 6 copies  
Fee Lease - 5 copies

State of New Mexico  
Energy, Minerals and Natural Resources Department

Form C-101  
Revised 1-1-89

OIL CONSERVATION DIVISION

P.O. Box 2088  
Santa Fe, New Mexico 87504-2088

DISTRICT I  
P.O. Box 1980, Hobbs, NM 88240

DISTRICT II  
P.O. Drawer DD, Artesia, NM 88210

DISTRICT III  
1000 Rio Brazos Rd., Aztec, NM 87410

API NO. (assigned by OCD on New Wells)

30-015-26413

5. Indicate Type of Lease

STATE ☒

FEE ☐

6. State Oil & Gas Lease No.

APPLICATION FOR PERMIT TO DRILL, DEEPEN, OR PLUG BACK

1a. Type of Work:

DRILL ☒

RE-ENTER ☐

DEEPEN ☐

PLUG BACK ☐

b. Type of Well:

OIL

WELL ☒

GAS

WELL ☐

OTHER ☐

SINGLE

ZONE ☒

MULTIPLE

ZONE ☐

7. Lease Name or Unit Agreement Name

Artesia State Com

2. Name of Operator

Chevron U.S.A. Inc.

8. Well No.

3

3. Address of Operator

P.O. Box 670, Hobbs, NM 88240

9. Pool name or Wildcat

Travis Upper Penn. Morrow

4. Well Location

Unit Letter F : 1980 Feet From The North Line and 2100 Feet From The West Line

Section 23

Township 18S

Range 28E

NMPM Eddy

County

10. Proposed Depth

11100'

11. Formation

Morrow

12. Rotary or C.T.

Rotary

13. Elevations (Show whether DF, RT, GR, etc.)

3522 GL 3509.7' GL

14. Kind & Status Plug. Bond

Blanket

15. Drilling Contractor

Unknown

16. Approx. Date Work will start

7-1-90

17.

PROPOSED CASING AND CEMENT PROGRAM

SIZE OF HOLE	SIZE OF CASING	WEIGHT PER FOOT	SETTING DEPTH	SACKS OF CEMENT	EST. TOP
14 3/4"	11 3/4"	42#	450'	300 sx	Circ to surface
11"	8 5/8"	24#	3000'	1200 sx	Circ to surface
7 7/8"	5 1/2"	15.5#	11100'	1025 sx	2500'

MUD PROGRAM

0 - 450' FW SPUD 9.0 PPG  
450 - 3000' BW 10#  
3000 - 11100' FW KCL ST 8.5 - 9.5 PPG WL - 10-3000

BOP EQUIPMENT - 3000 PSI WORKING PRESSURE W/ ANNULAR PREVENTER  
CHEVRON CLASS III DRAWING ATTACHED.

APPROVAL VALID FOR 180 DAYS  
PERMIT EXPIRES 12/26/90  
UNLESS DRILLING UNDERWAY

IN ABOVE SPACE DESCRIBE PROPOSED PROGRAM: IF PROPOSAL IS TO DEEPEN OR PLUG BACK, GIVE DATA ON PRESENT PRODUCTIVE ZONE AND PROPOSED NEW PRODUCTIVE ZONE. GIVE BLOWOUT PREVENTER PROGRAM, IF ANY.

I hereby certify that the information above is true and complete to the best of my knowledge and belief.

SIGNATURE M. E. Akins 6/20/90

TITLE Staff Drlg. Engr.

DATE 6-20-90

TYPE OR PRINT NAME M. E. Akins

TELEPHONE NO. 393-4121

(This space for State Use)

ORIGINAL SIGNED BY

MIKE WILLIAMS

APPROVED BY SUPERVISOR, DISTRICT II

TITLE

DATE

JUN 26 1990

CONDITIONS OF APPROVAL, IF ANY:

Submit to Appropriate  
District Office  
State Lease - 4 copies  
Fee Lease - 3 copies

State of New Mexico  
Energy, Minerals and Natural Resources Department

Form C-102  
Revised 1-1-89

OIL CONSERVATION DIVISION

P.O. Box 2088  
Santa Fe, New Mexico 87504-2088

DISTRICT I  
P.O. Box 1980, Hobbs, NM 88240

DISTRICT II  
P.O. Drawer DD, Artesia, NM 88210

DISTRICT III  
1000 Rio Brazos Rd., Aztec, NM 87410

WELL LOCATION AND ACREAGE DEDICATION PLAT

All Distances must be from the outer boundaries of the section

Operator CHEVRON USA, INC.			Lease Artesia State Com.		Well No. 3
Unit Letter F	Section 23	Township 18 South	Range 28 East	County Eddy	
Actual Footage Location of Well: 1980 feet from the North line and 2100 feet from the West line					
Ground level Elev. 3509.7	Producing Formation Travis Upper Penn.		Pool <del>Morgan</del> <i>ALOKg</i>	Dedicated Acreage: 320 Acres	

1. Outline the acreage dedicated to the subject well by colored pencil or hatchure marks on the plat below.
2. If more than one lease is dedicated to the well, outline each and identify the ownership thereof (both as to working interest and royalty).
3. If more than one lease of different ownership is dedicated to the well, have the interest of all owners been consolidated by communitization, unitization, force-pooling, etc.?  
☐ Yes ☐ No If answer is "yes" type of consolidation \_\_\_\_\_

If answer is "no" list the owners and tract descriptions which have actually been consolidated. (Use reverse side of this form if necessary.)

No allowable will be assigned to the well until all interests have been consolidated (by communitization, unitization, forced-pooling, or otherwise) or until a non-standard unit, eliminating such interest, has been approved by the Division.

**OPERATOR CERTIFICATION**  
I hereby certify that the information contained herein is true and complete to the best of my knowledge and belief.

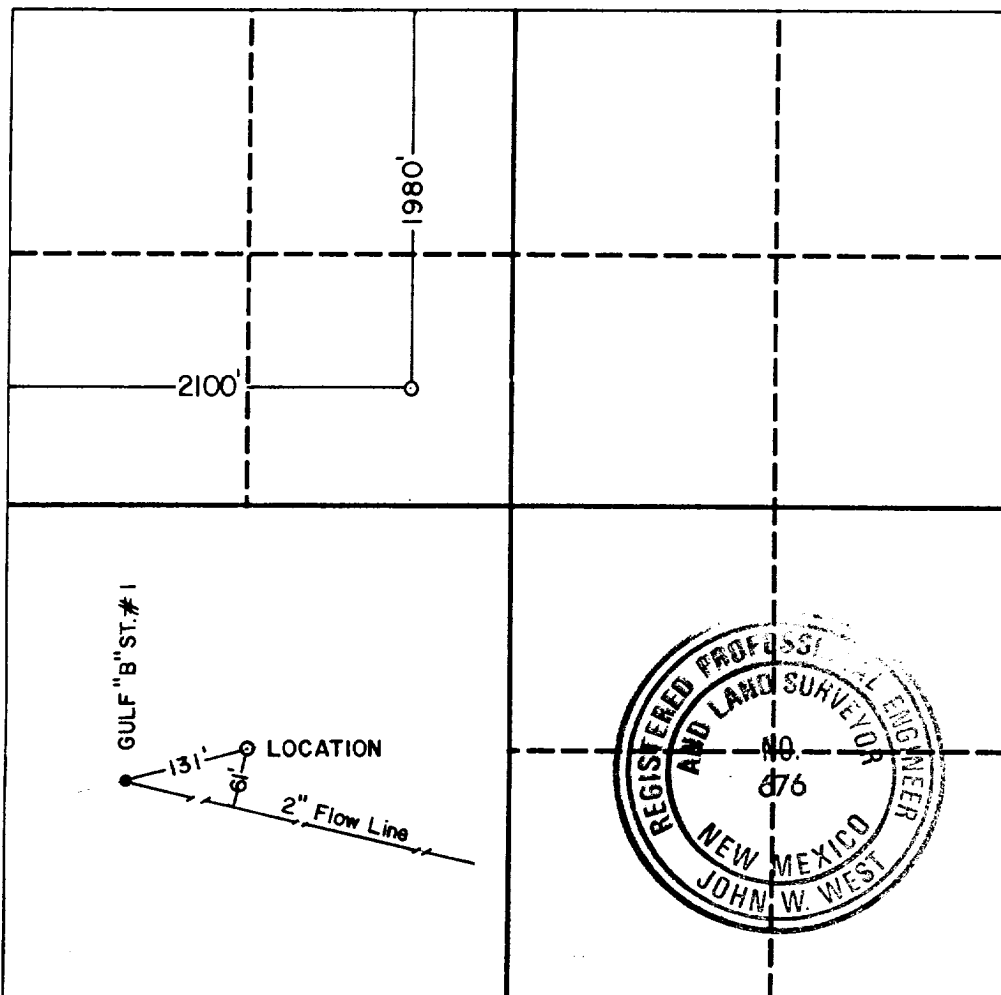
Signature  
*M. E. Akins* 4/20/90  
Printed Name  
M. E. Akins  
Position  
Staff Drllg. Engr.  
Company  
Chevron U.S.A. Inc.  
Date  
6-20-90

**SURVEYOR CERTIFICATION**  
I hereby certify that the well location shown on this plat was plotted from field notes of actual surveys made by me or under my supervision, and that the same is true and correct to the best of my knowledge and belief.

Date Surveyed  
June 12, 1990

Signature & Seal of  
Professional Surveyor

*John W. West*  
Certificate No. JOHN W. WEST, 676  
RONALD J. EIDSON, 3239



# HOBBBS DIVISION CLASS III PREVENTER

\* Spacesaver preventers are acceptable

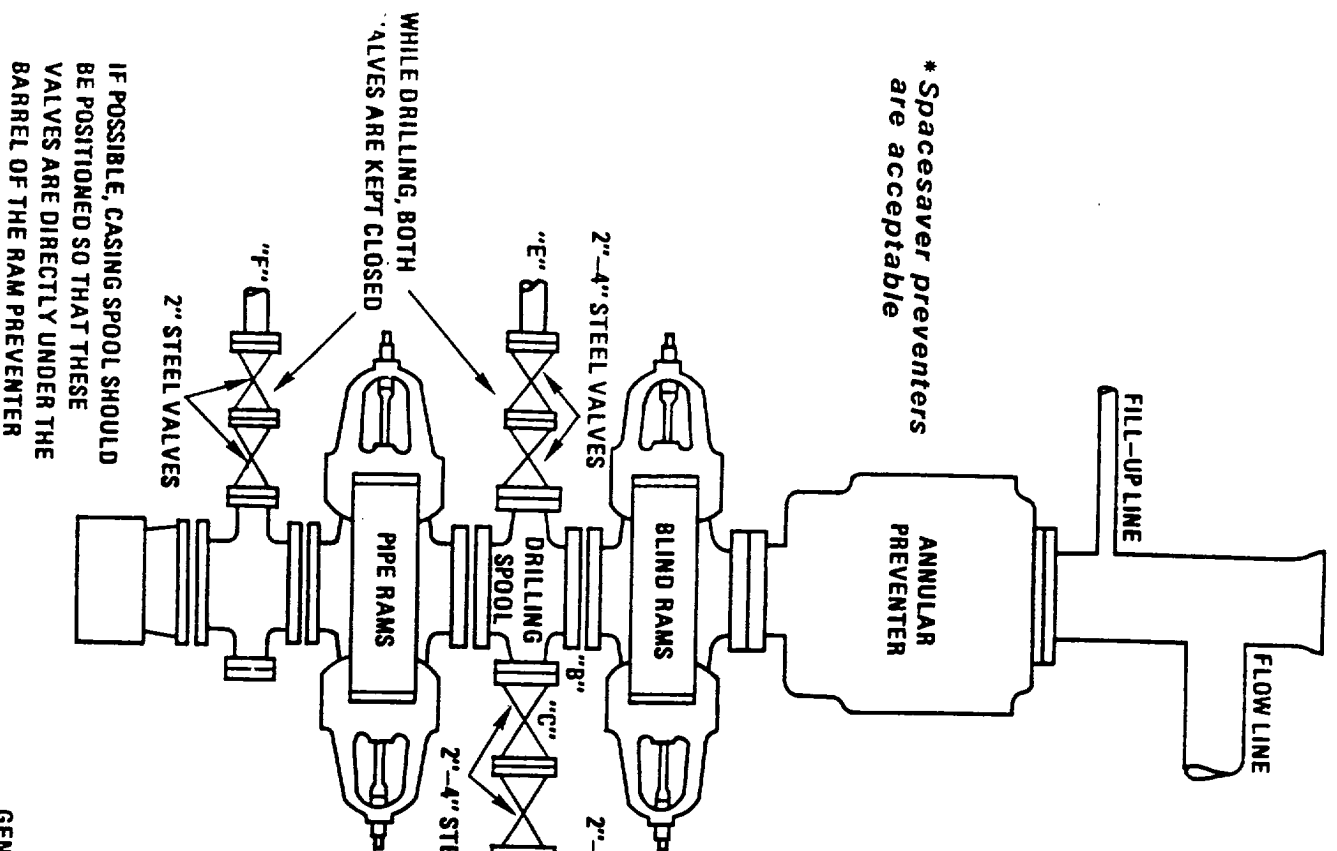
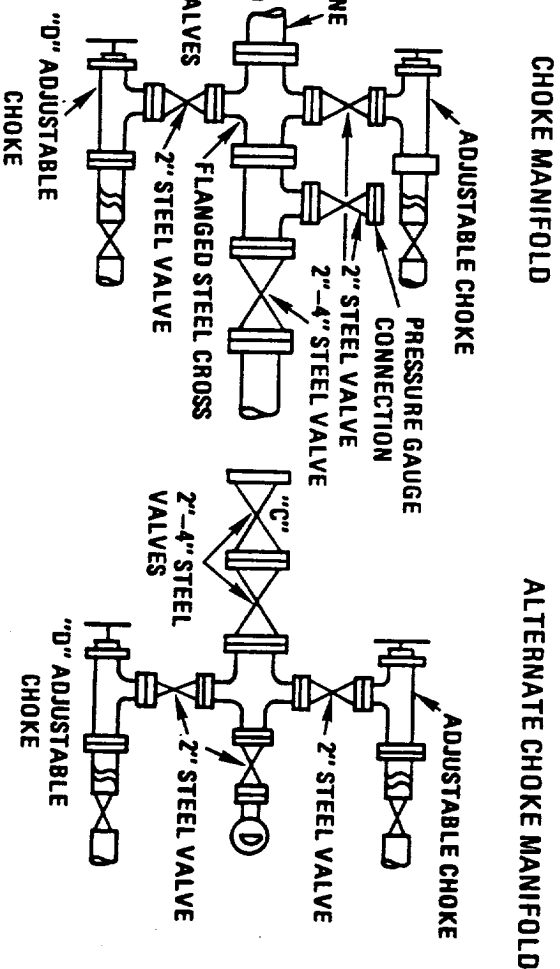


FIGURE III-4  
THREE PREVENTER HOOKUP  
CLASS III



GENERAL INSTRUCTIONS ON PAGE FOLLOWING FIGURE III-7