

UNITED STATES
DEPARTMENT OF THE INTERIOR
BUREAU OF LAND MANAGEMENT

APPLICATION FOR PERMIT TO DRILL, DEEPEN, OR PLUG BACK

1a. TYPE OF WORK

DRILL ☒

DEEPEN ☐

PLUG BACK ☐

b. TYPE OF WELL

OIL
WELL ☒

GAS
WELL ☐

OTHER

SINGLE
ZONE ☒

MULTIPLE
ZONE ☐

2. NAME OF OPERATOR

Hondo Oil & Gas Company

3. ADDRESS OF OPERATOR

P. O. Box 2208, Roswell, NM 88202

4. LOCATION OF WELL (Report location clearly and in accordance with any State requirements.)

At surface

990' FNL & 1770' FWL
At proposed prod. zone

14. DISTANCE IN MILES AND DIRECTION FROM NEAREST TOWN OR POST OFFICE*

approximately 7 miles southeast of Artesia, NM

15. DISTANCE FROM PROPOSED*

LOCATION TO NEAREST
PROPERTY OR LEASE LINE, FT.
(Also to nearest drlg. unit line, if any)

990'

16. NO. OF ACRES IN LEASE

80

17. NO. OF ACRES ASSIGNED
TO THIS WELL

40 20 40 (SJS)

18. DISTANCE FROM PROPOSED LOCATION*

TO NEAREST WELL, DRILLING, COMPLETED,
OR APPLIED FOR, ON THIS LEASE, FT.

19. PROPOSED DEPTH

2400'

20. ROTARY OR CABLE TOOLS

Rotary

21. ELEVATIONS (Show whether DF, RT, GR, etc.)

3452' FL

22. APPROX. DATE WORK WILL START*

7/5/90

23.

PROPOSED CASING AND CEMENTING PROGRAM

SIZE OF HOLE	SIZE OF CASING	WEIGHT PER FOOT	SETTING DEPTH	QUANTITY OF CEMENT
12 1/4"	8 5/8"	24# CIRCULATE	1100'	400 sx. lite + 150 sx. Class "C"
7 7/8"	4 1/2"	10.5# CIRCULATE	2400'	750 sx. Class "H" + 400 sx. lite

Mud Program:

0 - 1100' Drill with spud mud.
1100 - 2400' Drill with saturated brine.

BOP Diagram:

Will install on the 8 5/8" surface casing and will test before we
drill out.

APPROVAL SUBJECT TO
GENERAL REQUIREMENTS AND
SPECIAL STIPULATIONS
ATTACHED

RECEIVED

JUL 6 '90

O. C. D.
ARTESIA, OFFICE

RECEIVED

Post ID-1
7-13-90

New Loc & API

IN ABOVE SPACE DESCRIBE PROPOSED PROGRAM: If proposal is to deepen or plug back, give data on present productive zone and proposed new productive zone. If proposal is to drill or deepen directionally, give pertinent data on subsurface locations and measured and true vertical depths. Give blowout preventer program, if any.

24.

SIGNED

Ron Brown

TITLE

Petroleum Engineer

DATE

6/26/90

(This space for Federal or State office use)

PERMIT NO.

APPROVAL DATE

APPROVED BY

Dorinda D. Smith

TITLE

AREA MANAGER
CARLSBAD RESOURCE AREA

DATE

7-5-90

CONDITIONS OF APPROVAL, IF ANY:

*See Instructions On Reverse Side

Submit to Appropriate
District Office
State Lease - 4 copies
Fee Lease - 3 copies

State of New Mexico
Energy, Minerals and Natural Resources Department

Form C-102
Revised 1-1-89

OIL CONSERVATION DIVISION

P.O. Box 2088

Santa Fe, New Mexico 87504-2088

DISTRICT I

P.O. Box 1980, Hobbs, NM 88240

DISTRICT II

P.O. Drawer DD, Artesia, NM 88210

DISTRICT III

1000 Rio Brazos Rd., Aztec, NM 87410

WELL LOCATION AND ACREAGE DEDICATION PLAT

All Distances must be from the outer boundaries of the section

Operator Hondo Oil & Gas Company			Lease West Red Lake Unit		Well No. 34
Unit Letter C	Section 9	Township 18 South	Range 27 East	County NMJM Eddy	
Actual Footage Location of Well: 990 feet from the North line and 1770 feet from the West line					
Ground level Elev. 3452	Producing Formation Grayburg		Pool Grayburg San Andres	Dedicated Acreage: 40.20 Acres 40.535	

1. Outline the acreage dedicated to the subject well by colored pencil or hatchure marks on the plat below.

2. If more than one lease is dedicated to the well, outline each and identify the ownership thereof (both as to working interest and royalty).

3. If more than one lease of different ownership is dedicated to the well, have the interest of all owners been consolidated by communitization, unitization, force-pooling, etc.?

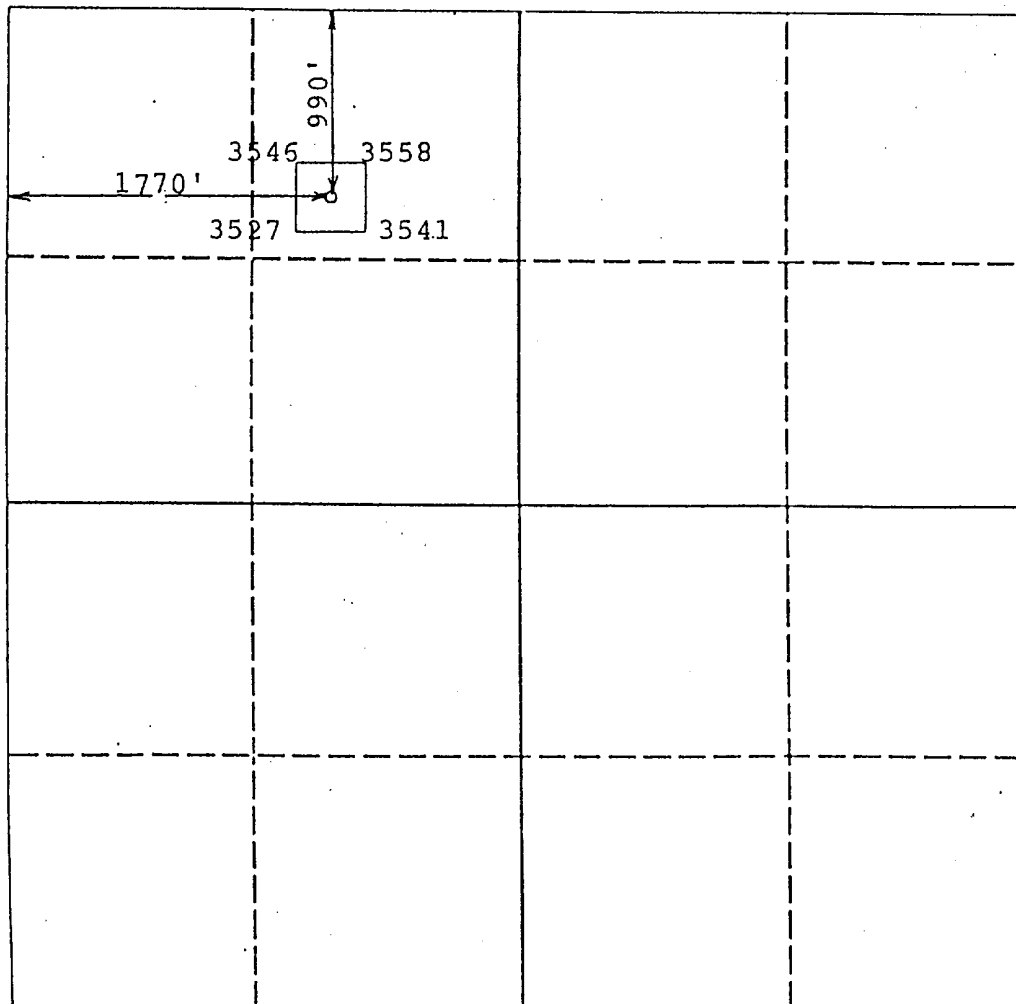
☒ Yes

☐ No

If answer is "yes" type of consolidation Unitized

If answer is "no" list the owners and tract descriptions which have actually been consolidated. (Use reverse side of this form if necessary.)

No allowable will be assigned to the well until all interests have been consolidated (by communitization, unitization, forced-pooling, or otherwise) or until a non-standard unit, eliminating such interest, has been approved by the Division.



OPERATOR CERTIFICATION

I hereby certify that the information contained herein is true and complete to the best of my knowledge and belief.

Signature

Ron Brown

Printed Name

Ron Brown

Position

Petroleum Engineer

Company

Hondo Oil & Gas Company

Date

6/26/90

SURVEYOR CERTIFICATION

I hereby certify that the well location shown on this plat was plotted from field notes of actual surveys made by me or under my supervision, and that the same is true and correct to the best of my knowledge and belief.

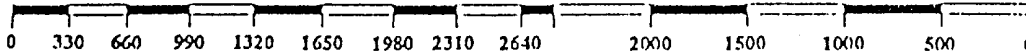
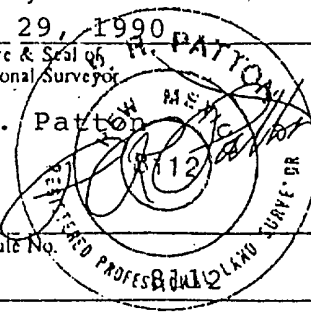
Date Surveyed

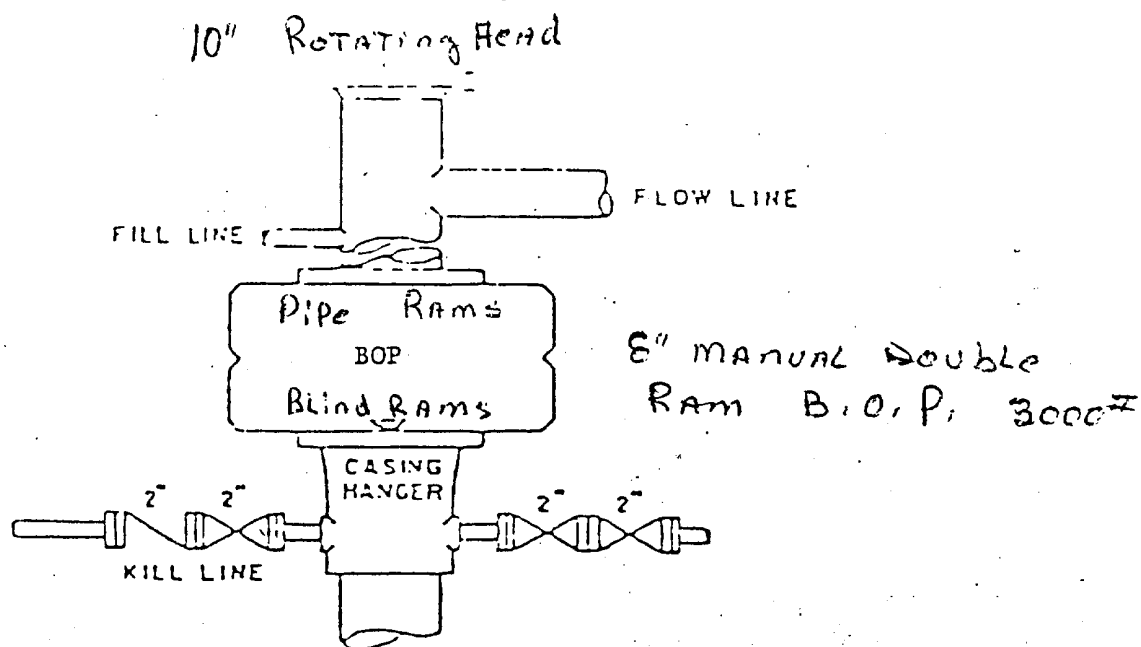
May 29, 1990

Signature & Seal of
Professional Surveyor

P.R. Patton

Certificate No.





BOP STACK

EXHIBIT "D"
Hondo Oil & Gas Company
West Red Lake Unit #34
BOP Diagram

APPLICATION FOR DRILLING

HONDO OIL & GAS COMPANY
WEST RED LAKE UNIT WELL NO. 34
990' FNL & 1770' FWL, Sec.9-T18S-R27E
Eddy County, New Mexico
Lease No.: NM-7721
(Development Well)

In conjunction with Form 9-331C, Application for Permit to Drill subject well, Hondo Oil & Gas Company submits the following items of pertinent information in accordance with BLM requirements:

1. The geologic surface formation is recent Permian with quaternary alluvium and other surficial deposits.
2. The estimated tops of geologic markers are as follows:

Queen	800'
Grayburg	1160'
San Andres	1440'
T.D.	2400'
3. The estimated depths at which water, oil or gas formations are anticipated to be encountered:

Water:	Random fresh water from surface to 600' +/-, and possible water flow at around 1280'.	
Oil:	Grayburg at approximately 1160' and/or the San Andres at approximately 1440'.	
Gas:	None anticipated.	
4. Proposed Casing Program: See Form 9-331C.
5. Proposed Control Equipment: See Form 9-331C and Exhibit "D".
6. Mud Program: See Form 9-331C.
7. Auxiliary Equipment: Blowout preventer, kelly cock and stabbing valve.
8. Testing, Logging and Coring Program:

Drill Stem Tests: None planned.	
Logging:	CNL/LDT/GR T.D. - Surface
	DLL/MSFL T.D. - 1100'

Coring: None planned.
9. No abnormal pressures or temperatures are anticipated. In the event abnormal pressures are encountered, the proposed mud program will be modified to increase the mud weight.
10. Anticipated started date: 7/5/90
Anticipated completion of drilling operations: approx. 10 days

MULTI-POINT SURFACE USE AND OPERATIONS PLAN

HONDO OIL & GAS COMPANY
WEST RED LAKE UNIT WELL NO. 34
990' FNL & 1770' FWL, Sec.9-T18S-R27E
Eddy County, New Mexico
Lease No.: NM-7721
(Development Well)

This plan is submitted with the Application for Permit to Drill the above described well. The purpose of the plan is to describe the location of the proposed well, the proposed construction activities and the operations plan to be followed in rehabilitating the surface after completion of the operation so that a complete appraisal can be made of the environmental effects associated with the operations.

1. EXISTING ROADS:

- A. Exhibit "A" is a portion of a BLM Quad map showing the location of the proposed well and access road as staked, in relation to existing roads. By road the well is approximately 10 miles southeast of Artesia, New Mexico.
- B. Directions: Travel east of Artesia, New Mexico on U.S. Highway 82 for 4.5 miles to the paved county road No. 201. Turn south on county road No. 201 for approximately 5.2 miles. Then turn east and go approximately 1/4 mile to location. (See Exhibit "A".)

2. PLANNED ACCESS ROAD:

- A. Length and Width: A 200' road 12' wide will be constructed after going approximately 200' at the last turn east.
- B. Construction: The new road will be 12' wide with a center crown, with 4 inches compacted caliche. The existing roads will be graded and topped with compacted caliche as needed.
- C. Turnouts: None required.
- D. Culverts: None required.
- E. Cut and Fill: None.
- F. Gates, Cattleguards: None required.

3. LOCATION OF EXISTING WELLS:

- A. Existing wells within a two miles radius are shown on Exhibit "B".

4. LOCATION OF EXISTING AND/OR PROPOSED FACILITIES:

- A. There are production facilities on the lease at this time. See Exhibit "B".

- B. If the oil well proves to be commercial, flow lines will be installed along the existing access roads to the storage tanks at an existing satellite production facility.

5. LOCATION AND TYPE OF WATER SUPPLY:

- A. It is planned to drill the proposed well with fresh and brine water which will be obtained from commercial sources. The water will be transported over existing and proposed access roads.

6. SOURCES OF CONSTRUCTION MATERIALS:

- A. Caliche for surfacing the proposed access road and wellsite pad will be obtained from a state pit approximately 4 miles east of location. The topsoil from the location will be stockpiled near the location for future rehabilitation use. No surface materials will be disturbed except those necessary for actual grading and levelling of the drill site and access road.

7. METHODS OF HANDLING WASTE DISPOSAL:

- A. Drill cuttings will be disposed of in the reserve pits.
- B. Drilling fluids will be allowed to evaporate in the reserve pits until the pits are dry.
- C. All pits will be fenced with normal fencing materials to prevent livestock from entering the area.
- D. Water produced during operations will be collected in tanks until hauled to an approved disposal system, or separate disposal application will be submitted to the BLM for approval.
- E. Oil produced during operations will be stored in tanks until sold.
- F. Current laws and regulations pertaining to the disposal of human waste will be complied with.
- G. Trash, waste paper, garbage and junk will be buried in a separate trash pit and covered with a minimum of 24 inches of dirt. All waste material will be contained to prevent scattering by the wind.
- H. All trash and debris will be buried or removed from the wellsite within 30 days after finishing drilling and/or completion operations.

8. ANCILLARY FACILITIES:

- A. None required.

9. WELLSITE LAYOUT:

- A. Exhibit "C" shows the relative location and dimensions of the well pad, reserve pits, and major rig components. The pad and pit area has been staked and flagged.
- B. Mat Size: 140' X 140' plus reserve pits.
- C. Cut & Fill: The area has a slope of approximately 8 feet sloping from the northeast to the southwest.
- D. The surface will be topped with compacted caliche and the reserve pits will be plastic lined.

10. PLANS FOR RESTORATION OF THE SURFACE:

- A. After completion of drilling and/or completion operations, all equipment and other material not needed for operations will be removed. Pits will be filled and the location cleaned of all trash and junk to leave the wellsite in as aesthetically pleasing a condition as possible.
- B. Any unguarded pits containing fluids will be fenced until they are filled.
- C. If the proposed well is non-productive, all rehabilitation and/or vegetation requirements of the Bureau of Land Management will be complied with and will be accomplished as expeditiously as possible. All pits will be filled and levelled within 90 days after abandonment.

11. OTHER INFORMATION:

- A. Topography: The well pad and access road are situated on the Mescalero Pediment, on the uplands ca. 1.8 miles northeast of the Pecos River floodplain, on the spine of a S/SW projecting gypsum-capped ridge, ca. 1 mile NW of Scoggin Draw and 1.8 miles E/NE of the Pecos River, within an area draining generally W/SW towards the Pecos River. The project is within an area of relatively shallow soils, in slightly inclined terrain which is subject to sheet wash and headward erosion of several arroyos, particularly in the SW quadrant of the well pad.
- B. Soil: The well pad straddles the interface of Gypsum land and Gypsum-land Cottonwood complex.
- C. Flora and Fauna: The vegetative cover is primarily one of grass-land environment and scrub-grass scrub disclimax community. The wildlife consists of rabbits, coyotes, rattlesnakes, lizards, dove, quail and other wildlife typical of the semi-arid desert land.
- D. Ponds and Streams: The Pecos River is located approximately 2 miles W/SW of the well site.

- E. Residences and Other Structures: None in the area.
- F. Land Use: Cattle grazing.
- G. Surface Owership: The proposed well site and existing access road are on Federal surface and minerals.
- H. An archaeological survey has been conducted by Archaeological Survey Consultants, P. O. Drawer D, Roswell, NM 88202, and copies have been submitted to the appropriate government agencies. The survey revealed no cultural material and therefore, archaeological clearance has been recommended.

12. OPERATOR'S REPRESENTATIVE:

- A. The field representative responsible for assuring compliance with the approved surface use and operations plan is as follows:

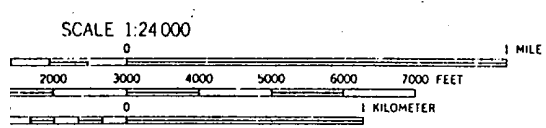
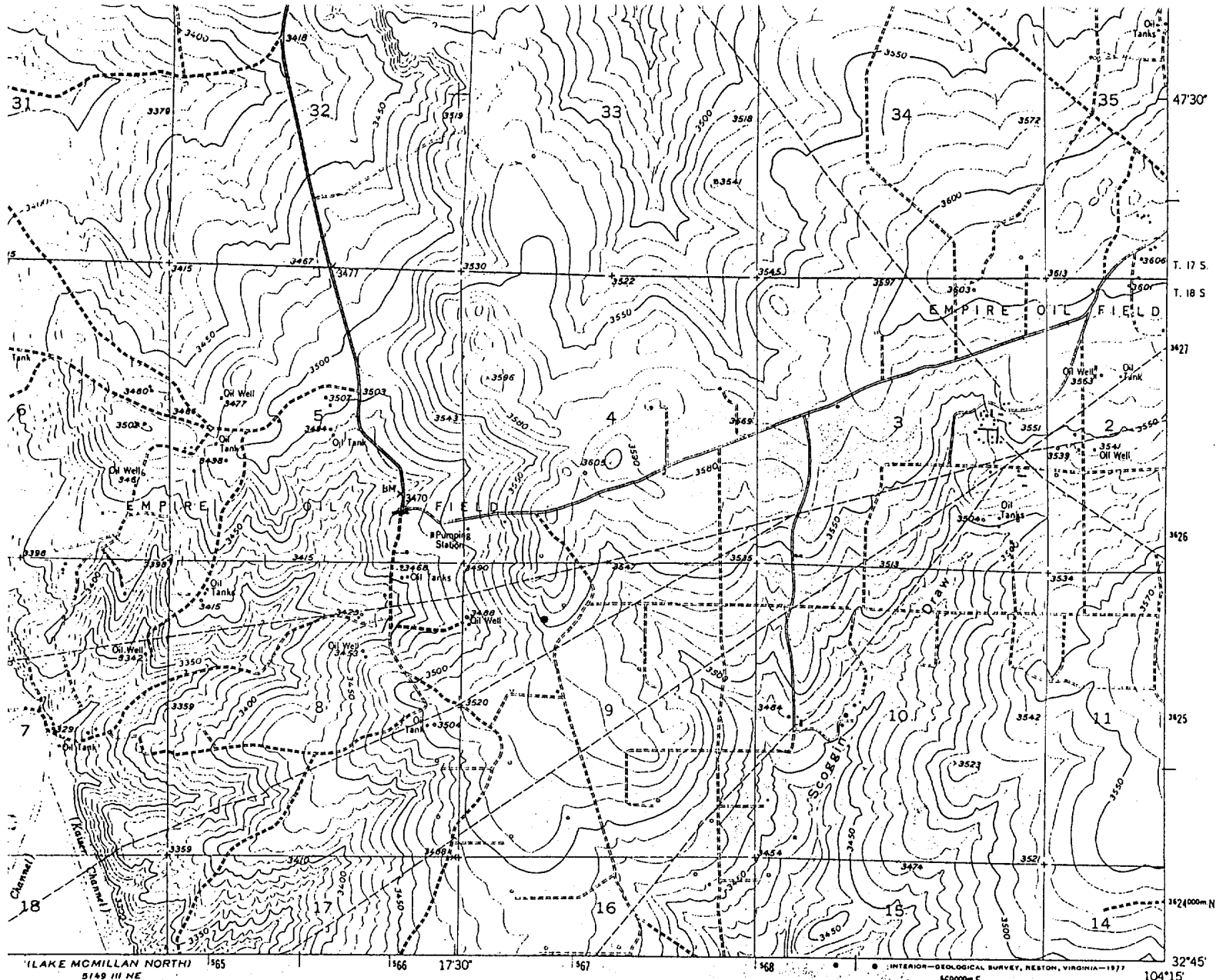
Bruce Stubbs
Hondo Oil & Gas Company
P. O. Box 2208
Roswell, NM 88202
Office phone: 505/625-6729
Home phone: 505/623-6466

13. CERTIFICATION:

I hereby certify that I have inspected the proposed drillsite and access route; that I am familiar with the conditions which presently exist; that the statements made in the plan are, to be the best of my knowledge true and correct; and, that the work associated with the operations and proposed herein will be performed by Hondo Oil & Gas Company and its contractors and subcontractors in conformity with this plan and their terms and conditions under which it is approved. This statement is subject to the provisions of 18 U.S.C. 1001 for the filing of a false statement.



Hondo Oil & Gas Company



CONTOUR INTERVAL 10 FEET
 GEODETIC VERTICAL DATUM OF 1929

IES WITH NATIONAL MAP ACCURACY STANDARDS
 URVEY, DENVER, COLORADO 80225, OR RESTON, VIRGINIA 22092
 OGRAPHIC MAPS AND SYMBOLS IS AVAILABLE ON REQUEST



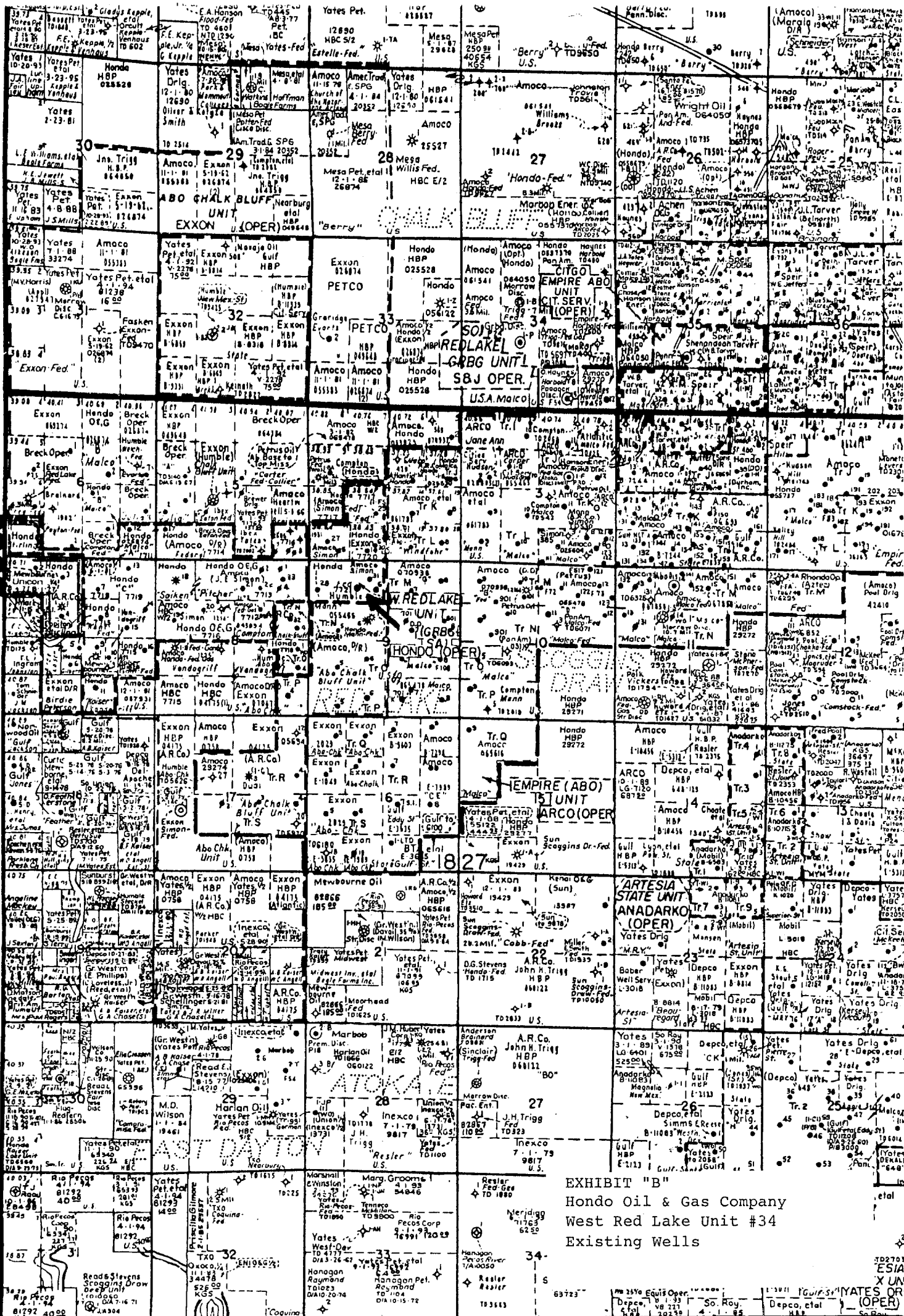
ROAD CLASSIFICATION
 Heavy-duty ————— Light-duty —————
 Medium-duty - - - - - Unimproved dirt
 U.S. Route State Route

SPRING LAKE, N. MEX.
 N3245-W10415/7.5

1955
 PHOTOREVISED 1975
 AMS 8140 IV SE-EDDIES V001

EXHIBIT "A"
 Hondo Oil & Gas Company
 West Red Lake Unit #34
 990' FNL & 1770' FWL
 Sec.9-T18S-R27E
 Eddy Co., NM
 Paved Road
 Existing Access Road
 Proposed Road

T
18
S



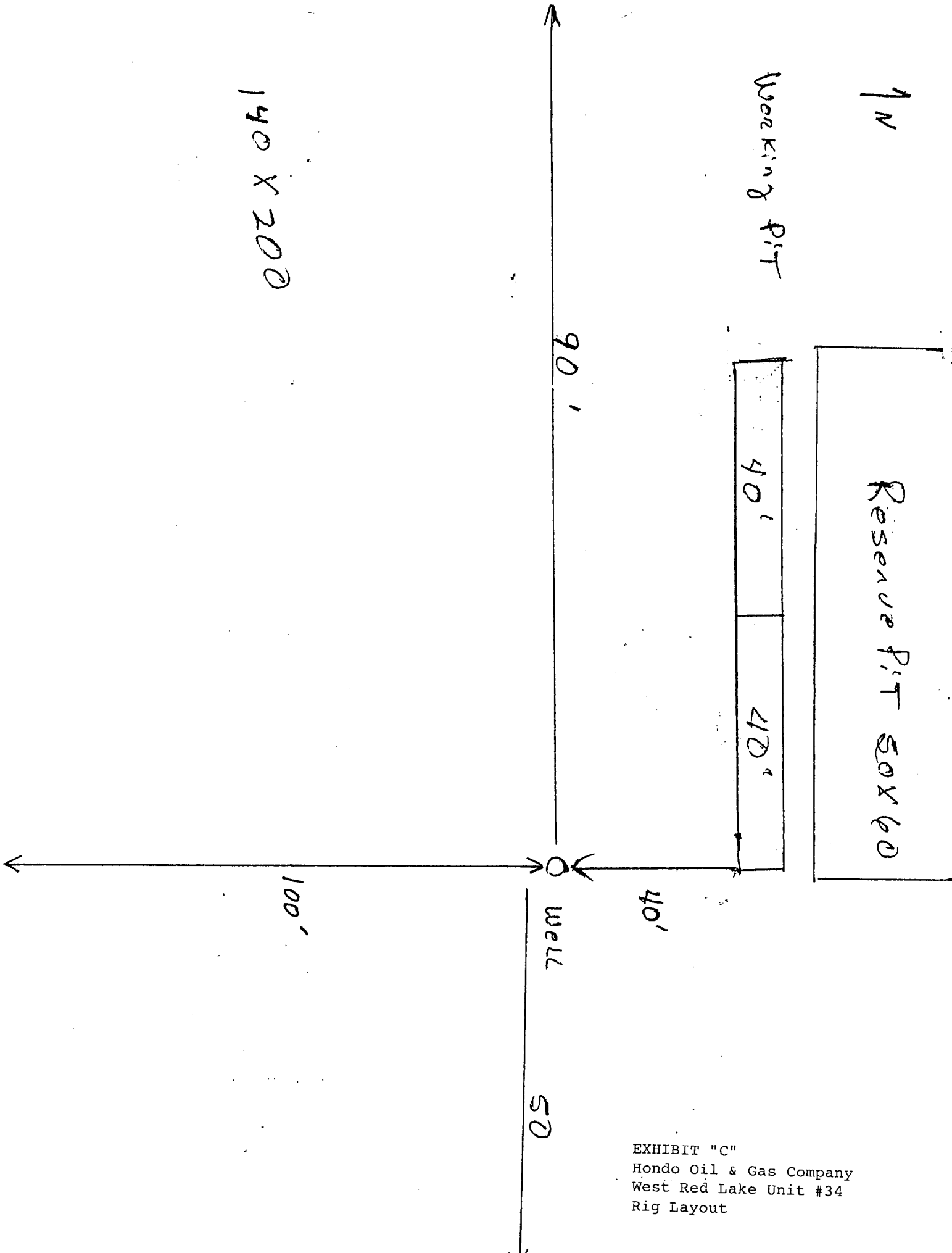


EXHIBIT "C"
Hondo Oil & Gas Company
West Red Lake Unit #34
Rig Layout