

OIL CONSERVATION DIVISION

DISTRICT I  
P.O. Box 1980, Hobbs, NM 88240

P.O. Box 2088  
Santa Fe, New Mexico 87504-2088

DISTRICT II  
P.O. Drawer DD, Artesia, NM 88210

DISTRICT III  
1000 Rio Brazos Rd., Artesia, NM 87410

WELL LOCATION AND ACREAGE DEDICATION PLAT

All Distances must be from the outer boundaries of the section

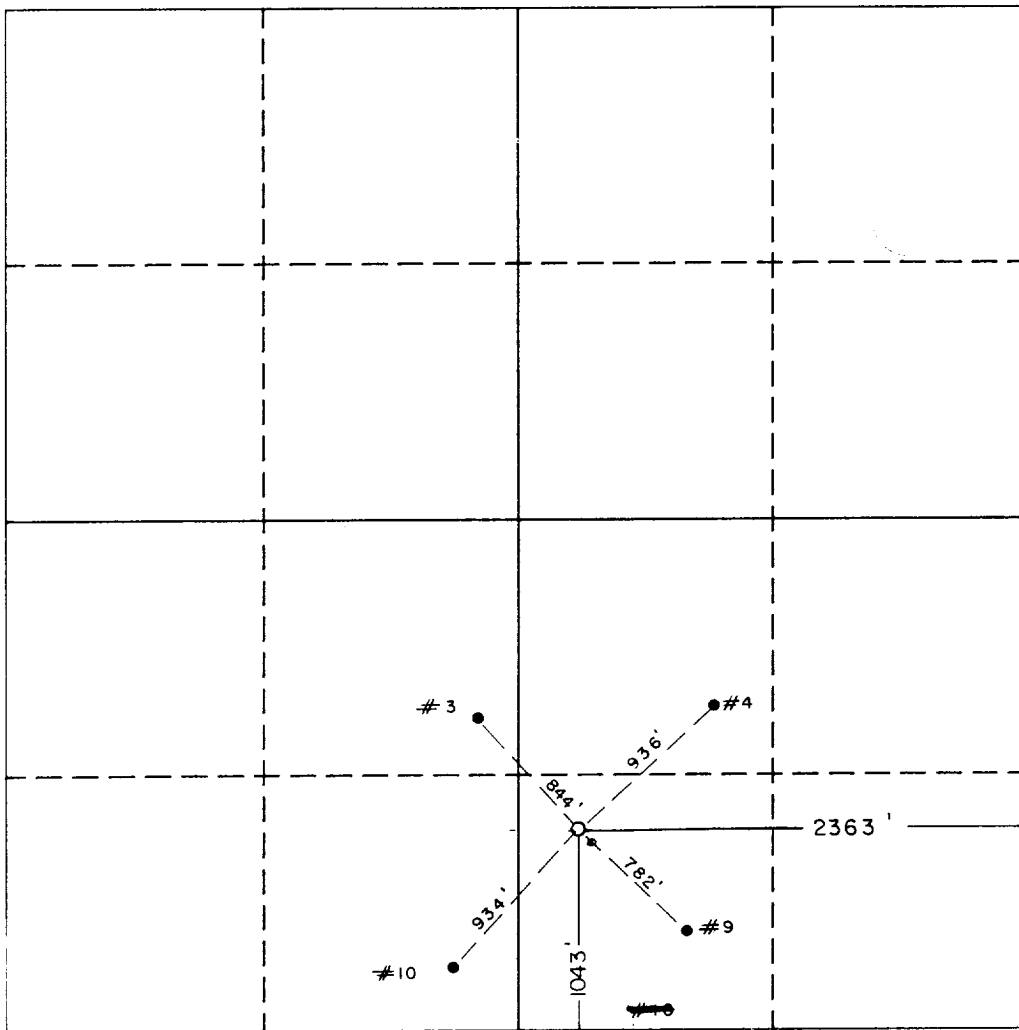
Operator B & A OPERATING CO.			Lease CULWIN QUEEN UNIT		Well No. 19
Unit Letter O	Section 36	Township 18 SOUTH	Range 30 EAST	NMPM	County EDDY
Actual Footage Location of Well:					
2363 feet from the EAST line and		1043 feet from the SOUTH line			
Ground Level Elev. 3533.6	Producing Formation	Pool Shawanty-SE-2-G	Dedicated Acreage: 40 Acres		

1. Outline the acreage dedicated to the subject well by colored pencil or Machure marks on the plat below.
2. If more than one lease is dedicated to the well, outline each and identify the ownership thereof (both as to working interest and royalty).
3. If more than one lease of different ownership is dedicated to the well, have the interest of all owners been consolidated by communitization, unitization, force-pooling, etc.?

☐ Yes ☐ No If answer is "yes" type of consolidation \_\_\_\_\_

If answer is "no" list of owners and tract descriptions which have actually been consolidated. (Use reverse side of this form necessary.)

No allowable will be assigned to the well unit all interests have been consolidated (by communitization, unitization, forced-pooling, otherwise) or until a non-standard unit, eliminating such interest, has been approved by the Division.



OPERATOR CERTIFICATION

I hereby certify the the information contained herein is true and complete to the best of my knowledge and belief.

Signature

Printed Name

Position

Company

Date

SURVEYOR CERTIFICATION

I hereby certify that the well location shown on this plat was plotted from field notes of actual surveys made by me or under my supervision, and that the same is true and correct to the best of my knowledge and belief.

Date Surveyed

11-19-91

Signature & Seal of  
Professional Surveyor

Certificate No. JOHN W. WEST, 676

RONALD J. EIDSON, 3239

GARY L. JONES, 7977

W.O. 91-11-0357