

Submit to Appropriate
District Office
State Lease - 6 copies
Fee Lease - 5 copies

State of New Mexico
Energy, Minerals and Natural Resources Department

Form C-101
Revised 1-1-89

DISTRICT I
P.O. Box 1980, Hobbs, NM 88240

DISTRICT II
P.O. Drawer DD, Artesia, NM 88210

DISTRICT III
1000 Rio Brazos Rd., Aztec, NM 87410

OIL CONSERVATION DIVISION

P.O. Box 2088
Santa Fe, New Mexico 87504-2088

API NO. (assigned by OCD on New Wells)

30-015-27157

5. Indicate Type of Lease

STATE ☒

FEE ☐

6. State Oil & Gas Lease No.

E-648-131

7. Lease Name or Unit Agreement Name

Artesia Metex ut.

8. Well No.

62

9. Pool name or Wildcat

Artesia D-G-SF

APPLICATION FOR PERMIT TO DRILL, DEEPEN, OR PLUG BACK

1a. Type of Work:

DRILL ☒

RE-ENTER ☐

DEEPEN ☐

PLUG BACK ☐

b. Type of Well:

OIL

GAS

WELL ☒

WELL ☐

OTHER ☐

SINGLE
ZONE ☐

MULTIPLE
ZONE ☒

2. Name of Operator

SDX Resources, Inc. ✓

3. Address of Operator

P. O. Box 5061, Midland, Texas 79704-5061

4. Well Location

Unit Letter IE: 2310' Feet From The North Line and 990' Feet From The West Line

Section

30

Township

18S

Range

28E

NMPM

Eddy

County

10. Proposed Depth

Approx. 2200'

11. Formation

Grayburg

12. Rotary or C.T.

Rotary

13. Elevations (Show whether DF, RT, GR, etc.)

3562'

14. Kind & Status Plug. Bond

Blanket

15. Drilling Contractor

Capstar

16. Approx. Date Work will start

As soon as approved.

PROPOSED CASING AND CEMENT PROGRAM

SIZE OF HOLE	SIZE OF CASING	WEIGHT PER FOOT	SETTING DEPTH	SACKS OF CEMENT	EST. TOP
11" 12 1/4"	8 5/8"	24#	Approx. 500'	150 - 200 sxs	Circulate
7 7/8"	5 1/2"	15.50#	Approx. 2200'	150 sxs	

Plan to drill an 11" hole to approx. 500'; set 8 5/8" 24# surface casing and circulate with Class "C" cement. Drill out with 7 7/8" bit to top San Andres (+/- 2200') TD. Run open hole logs GR-NL, Dual Lateral, etc. Run 5 1/2" 15.50# casing and cement with 150-200 sxs Class "C" cement. Est. top cement 1000'. Perforate Premier - Metex producing zones and stimulate as needed.

Post ID-1
10-8-92
New Log + API

APPROVED BY 160
PERMIT DATES 4/8/93
UNLESS DRILLING UNDERWAY

NSL #3175

IN ABOVE SPACE DESCRIBE PROPOSED PROGRAM: IF PROPOSAL IS TO DEEPEN OR PLUG BACK, GIVE DATA ON PRESENT PRODUCTIVE ZONE AND PROPOSED NEW PRODUCTIVE ZONE. GIVE BLOWOUT PREVENTER PROGRAM, IF ANY.

I hereby certify that the information above is true and complete to the best of my knowledge and belief.

SIGNATURE

TITLE

Vice President

DATE 9-11-92

TYPE OR PRINT NAME

John Pool

TELEPHONE NO. 915-685-1761

(This space for State Use)

ORIGINAL SIGNED BY

MIKE WILLIAMS

SUPERVISOR, DISTRICT II

APPROVED BY

TITLE

DATE

OCT 8 1992

CONDITIONS OF APPROVAL, IF ANY:

APPROVED BY ES/E
DATE 10/8/92

Submit to Appropriate
District Office
State Lease - 4 copies
Fee Lease - 3 copies

State of New Mexico
Energy, Minerals and Natural Resources Department

RECEIVED

SEP 29 1992

Form C-102
Revised 1-1-89

OIL CONSERVATION DIVISION

P.O. Box 2088
Santa Fe, New Mexico 87504-2088

DISTRICT I
P.O. Box 1980, Hobbs, NM 88240

DISTRICT II
P.O. Drawer DD, Artesia, NM 88210

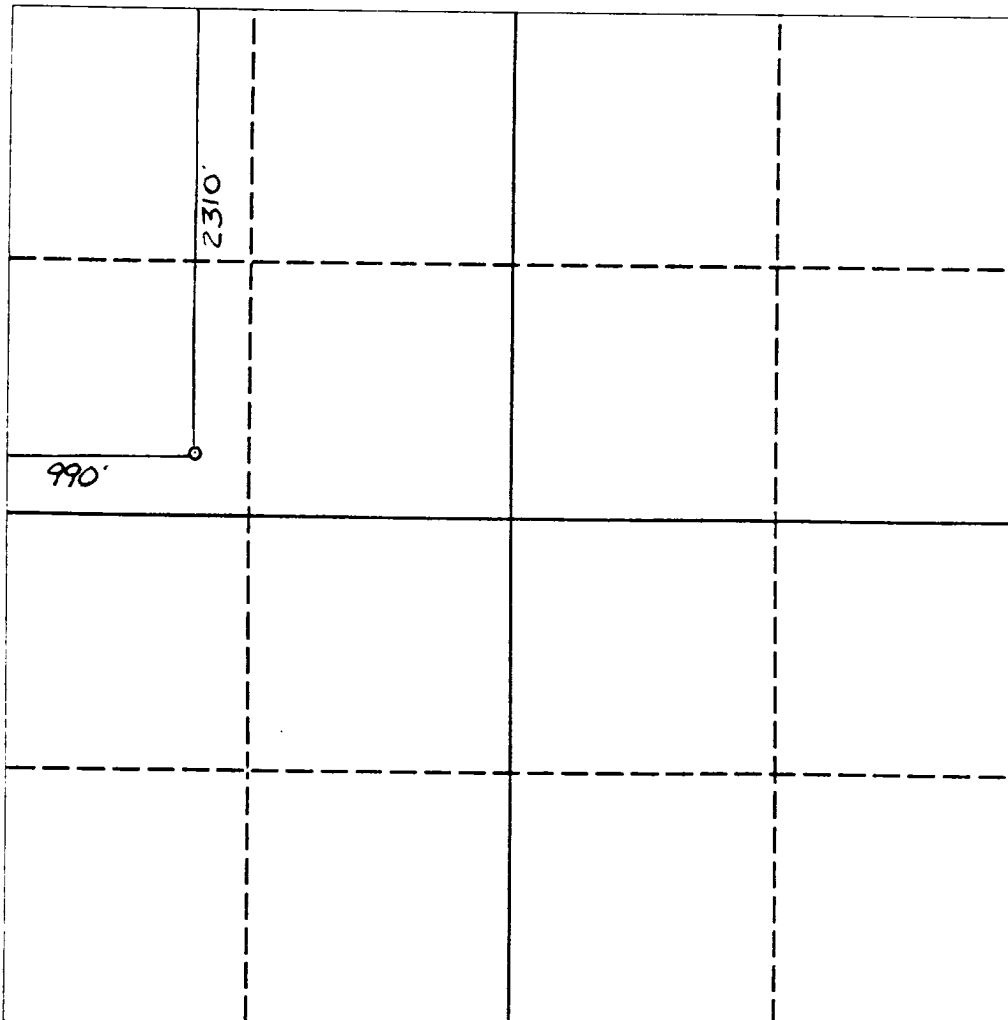
DISTRICT III
1000 Rio Brazos Rd., Aztec, NM 87410

WELL LOCATION AND ACREAGE DEDICATION PLAT

All Distances must be from the outer boundaries of the section

Operator SDX RESOURCES, INC.			Lease ARTESIA METEX UNIT		Well No. 62
Unit Letter E	Section 30	Township 18 SOUTH	Range 28 EAST	County EDDY COUNTY, NM	
Actual Footage Location of Well: 2310 feet from the NORTH line and 990 feet from the WEST line					
Ground level Elev. 3562.	Producing Formation <i>Artesia</i>		Pool <i>Artesia U G 507</i>	Dedicated Acreage: 40 Acres	

1. Outline the acreage dedicated to the subject well by colored pencil or hatchure marks on the plat below.
2. If more than one lease is dedicated to the well, outline each and identify the ownership thereof (both as to working interest and royalty).
3. If more than one lease of different ownership is dedicated to the well, have the interest of all owners been consolidated by communitization, unitization, force-pooling, etc?
☐ Yes ☐ No If answer is "yes" type of consolidation _____
If answer is "no" list the owners and tract descriptions which have actually been consolidated. (Use reverse side of this form if necessary).
No allowable will be assigned to the well until all interests have been consolidated (by communitization, unitization, forced-pooling, or otherwise) or until a non-standard unit, eliminating such interest, has been approved by the Division.



OPERATOR CERTIFICATION

I hereby certify that the information contained herein is true and complete to the best of my knowledge and belief.

Signature

Steve Sell

Printed Name

President

Position

SDX Resources, Inc.

Company

9-25-92

Date

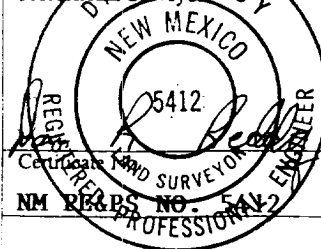
SURVEYOR CERTIFICATION

I hereby certify that the well location shown on this plat was plotted from field notes of actual surveys made by me or under my supervision, and that the same is true and correct to the best of my knowledge and belief.

Date Surveyed

SEPTEMBER 22, 1992

Signature & Seal of
Professional Surveyor



0 330 660 990 1320 1650 1980 2310 2640 2000 1500 1000 500 0