

Submit to Appropriate  
District Office  
State Lease -- 6 copies  
Fee Lease -- 5 copies

State of New Mexico  
Energy, Minerals and Natural Resources Department

Form C-101  
Revised 1-1-89

DISTRICT I  
P.O. Box 1980, Hobbs, NM 88240

DISTRICT II  
P.O. Drawer DD, Artesia, NM 88210

DISTRICT III  
1000 Rio Brazos Rd., Aztec, NM 87410

# OIL CONSERVATION DIVISION

P.O. Box 2088  
Santa Fe, New Mexico 87504-2088

SEP 29 1992

API NO. (assigned by OCD on New Wells)  
30-015-27158

5. Indicate Type of Lease

STATE ☒ FEE ☐

6. State Oil & Gas Lease No.

E-648-131

7. Lease Name or Unit Agreement Name

Artesia Metex *ut*

8. Well No.

# 63

9. Pool name or Wildcat

\* Artesia *B-6-SF*

1a. Type of Work:

DRILL ☒

RE-ENTER ☐

DEEPEN ☐

PLUG BACK ☐

b. Type of Well:

OIL

WELL ☒

GAS

WELL ☐

OTHER ☐

SINGLE  
ZONE ☐

MULTIPLE  
ZONE ☒

2. Name of Operator

SDX Resources, Inc. ☒

3. Address of Operator

P. O. Box 5061, Midland, Texas 79704-5061

4. Well Location

Unit Letter G : 1620 Feet From The North

Line and 2500 Feet From The East

Line

Section 25

Township 18S

Range 27E

NMPM

Eddy

County

10. Proposed Depth

Approx. 2200'

11. Formation

Grayburg

12. Rotary or C.T.

Rotary

13. Elevations (Show whether DF, RT, GR, etc.)

3566'

14. Kind & Status Plug. Bond

Blanket

15. Drilling Contractor

Capstar

16. Approx. Date Work will start

As soon as approved.

## PROPOSED CASING AND CEMENT PROGRAM

SIZE OF HOLE	SIZE OF CASING	WEIGHT PER FOOT	SETTING DEPTH	SACKS OF CEMENT	EST. TOP
8 1/2"	8 5/8"	24#	Approx. 500'	150 - 200 sxs	Circulate
7 7/8"	5 1/2"	15.50#	Approx. 2200'	150 sxs	

Plan to drill an 11" hole to approx. 500'; set 8 5/8" 24# surface casing and circulate with Class "C" cement. Drill out with 7 7/8" bit to top San Andres (+/- 2200') TD. Run open hole logs GR-NL, Dual Lateral, etc. Run 5 1/2" 15.50# casing and cement with 150-200 sxs Class "C" cement. Est. top cement 1000'. Perforate Premier - Metex producing zones and stimulate as needed.

Part ID-1  
10-8-92  
Mike Williams & API

IN ABOVE SPACE DESCRIBE PROPOSED PROGRAM: IF PROPOSAL IS TO DEEPEN OR PLUG BACK, GIVE DATA ON PRESENT PRODUCTIVE ZONE AND PROPOSED NEW PRODUCTIVE ZONE. GIVE BLOWOUT PREVENTER PROGRAM, IF ANY.

I hereby certify that the information above is true and complete to the best of my knowledge and belief.

SIGNATURE [Signature] TITLE Vice President DATE 9-11-92

TYPE OR PRINT NAME John Pool

TELEPHONE NO. 915-685-1700

(This space for State Use) ORIGINAL SIGNED BY

MIKE WILLIAMS

APPROVED BY SUPERVISOR, DISTRICT II

TITLE

DATE

10/1/92

CONDITIONS OF APPROVAL, IF ANY

NOTIFY API OF ANY SUFFICIENT  
TIME TO ADVISE OF THE  
8/9/92

NSL-3165

Appv. 9-29-92

Submit to Appropriate  
District Office  
State Lease - 4 copies  
Fee Lease - 3 copies

State of New Mexico  
Energy, Minerals and Natural Resources Department

Form C-102  
Revised 1-1-89

OIL CONSERVATION DIVISION

P.O. Box 2088  
Santa Fe, New Mexico 87504-2088

DISTRICT I  
P.O. Box 1980, Hobbs, NM 88240

DISTRICT II  
P.O. Drawer DD, Artesia, NM 88210

DISTRICT III  
1000 Rio Brazos Rd., Aztec, NM 87410

WELL LOCATION AND ACREAGE DEDICATION PLAT

All Distances must be from the outer boundaries of the section

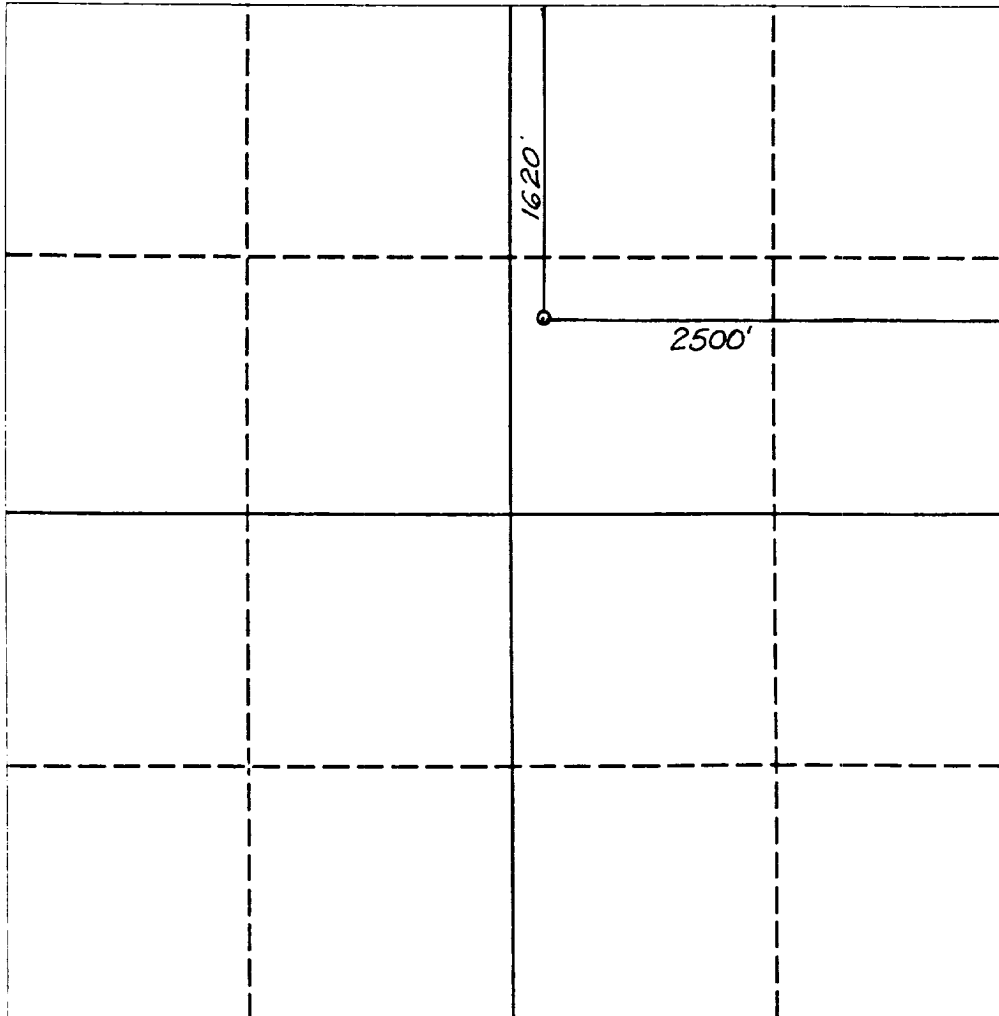
RECEIVED

SEP 21 1992

C. C. D.  
OFFICE

Operator <b>SDX RESOURCES, INC.</b>			Lease <b>ARTESIA METEX UNIT</b>		Well No. <b>63</b>
Unit Letter <b>G</b>	Section <b>25</b>	Township <b>18 SOUTH</b>	Range <b>27 EAST</b>	County <b>EDDY COUNTY, NM</b>	
Actual Footage Location of Well: <b>1620</b> feet from the <b>NORTH</b> line and <b>2500</b> feet from the <b>EAST</b> line					
Ground level Elev. <b>3561.</b>	Producing Formation <i>Lake</i>		Pool <i>White</i>	Dedicated Acreage: <b>4.8</b> Acres	

1. Outline the acreage dedicated to the subject well by colored pencil or hachure marks on the plat below.
2. If more than one lease is dedicated to the well, outline each and identify the ownership thereof (both as to working interest and royalty).
3. If more than one lease of different ownership is dedicated to the well, have the interest of all owners been consolidated by communitization, unitization, force-pooling, etc.?  
☐ Yes ☐ No If answer is "yes" type of consolidation \_\_\_\_\_  
If answer is "no" list the owners and tract descriptions which have actually been consolidated. (Use reverse side of this form if necessary.) \_\_\_\_\_  
No allowable will be assigned to the well until all interests have been consolidated (by communitization, unitization, forced-pooling, or otherwise) or until a non-standard unit, eliminating such interest, has been approved by the Division.



OPERATOR CERTIFICATION

I hereby certify that the information contained herein is true and complete to the best of my knowledge and belief.

Signature *Steve Sell*  
Printed Name **Steve Sell**  
Position **President**  
Company **SDX Resources, Inc.**  
Date **9-25-92**

SURVEYOR CERTIFICATION

I hereby certify that the well location shown on this plat was plotted from field notes of actual surveys made by me or under my supervision, and that the same is true and correct to the best of my knowledge and belief.

Date Surveyed **SEPTEMBER 22, 1992**  
Signature & Seal of Professional Surveyor  
*Steve Sell*  
Professional Surveyor  
NEW MEXICO  
5412  
REGISTERED PROFESSIONAL SURVEYOR  
NM REELS NO. 5412

0 330 660 990 1320 1650 1980 2310 2640 2000 1500 1000 500 0