

Submit to Appropriate
District Office
State Lease - 6 copies
Fee Lease - 5 copies

State of New Mexico
Energy, Minerals and Natural Resources Department

Form C-101
Revised 1-1-89

OK
B.L.M.
5/2/92

DISTRICT I
P.O. Box 1980, Hobbs, NM 88240

DISTRICT II
P.O. Drawer DD, Artesia, NM 88210

DISTRICT III
1000 Rio Brazos Rd., Aztec, NM 87410

OIL CONSERVATION DIVISION

P.O. Box 2088
Santa Fe, New Mexico 87504-2088

RECEIVED

NOV 10 1992

O. C. D.

API NO. (assigned by OCD on New Wells)

30-015-27194

5. Indicate Type of Lease

STATE ☒

FEE ☐

6. State Oil & Gas Lease No.

E-648-131

7. Lease Name or Unit Agreement Name

Artesia Metex Unit

8. Well No.

66

9. Pool name or Wildcat

Artesia, Q-G-SA

1a. Type of Work:

DRILL ☒

RE-ENTER ☐

DEEPEN ☐

PLUG BACK ☐

b. Type of Well:

OIL
WELL ☒

GAS
WELL ☐

OTHER ☐

SINGLE
ZONE ☐

MULTIPLE
ZONE ☒

2. Name of Operator

SDX RESOURCES, INC. ✓

3. Address of Operator

P. O. Box 5061 Midland, Texas 79704-5061

4. Well Location

Unit Letter K : 1650 Feet From The West Line and 2310 Feet From The South Line

Section 25 Township 18-S Range 27-E NMPM Eddy County

10. Proposed Depth

Approx. 2200'

11. Formation

Grayburg

12. Rotary or C.T.

Rotary

13. Elevations (Show whether DF, RT, GR, etc.)

3546

14. Kind & Status Plug. Bond

Blanket

15. Drilling Contractor

Capstar

16. Approx. Date Work will start

As soon as approved.

17.

PROPOSED CASING AND CEMENT PROGRAM

SIZE OF HOLE	SIZE OF CASING	WEIGHT PER FOOT	SETTING DEPTH	SACKS OF CEMENT	EST. TOP
12-1/4	8-5/8"	24#	Approx. 500'	150 - 200 sxs	Circulate
7-7/8	5-1/2"	15.50#	Approx. 2200'	150 sxs	

Plan to drill an 12 1/4" hole to approx. 500'; set 8-5/8" 24# surface casing and circulate with Class "C" cement. Drill out with 7-7/8" bit to top San Andres (+/- 2200') TD. Run open hole logs GR-NL, Dual Lateral, etc. Run 5-1/2" 15.50# casing and cement with 150-200 sxs Class "C" cement. Est. top cement 1000'. Perforate Premier - Metex producing zones and stimulate as needed.

Past FD-1
11-10-92
New Log & API

APPROVAL VALID FOR 180 DAYS

PERMIT EXPIRES 5-16-93

UNLESS DRILLING UNDERWAY

IN ABOVE SPACE DESCRIBE PROPOSED PROGRAM: IF PROPOSAL IS TO DEEPEN OR PLUG BACK, GIVE DATA ON PRESENT PRODUCTIVE ZONE AND PROPOSED NEW PRODUCTIVE ZONE. GIVE BLOWOUT PREVENTER PROGRAM IF ANY.

I hereby certify that the information above is true and complete to the best of my knowledge and belief.

SIGNATURE

John Pool

TITLE

Vice-President

DATE

11/13/92

TYPE OR PRINT NAME

John Pool

TELEPHONE NO. 915-685-1761

(This space for State Use)

APPROVED BY

Mark Reddy

TITLE

DATE

NOV 13 1992

CONDITIONS OF APPROVAL, IF ANY:

NOTIFY N.M.O.C.D. IN SUFFICIENT
TIME TO WITNESS CEMENTING THE
CASING

Submit to Appropriate
District Office
State Lease - 4 copies
Fee Lease - 3 copies

State of New Mexico
Energy, Minerals and Natural Resources Department

Form C-102
Revised 1-1-89

OIL CONSERVATION DIVISION

P.O. Box 2088
Santa Fe, New Mexico 87504-2088

DISTRICT I

P.O. Box 1980, Hobbs, NM 88240

DISTRICT II

P.O. Drawer DD, Artesia, NM 88210

DISTRICT III

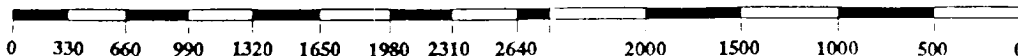
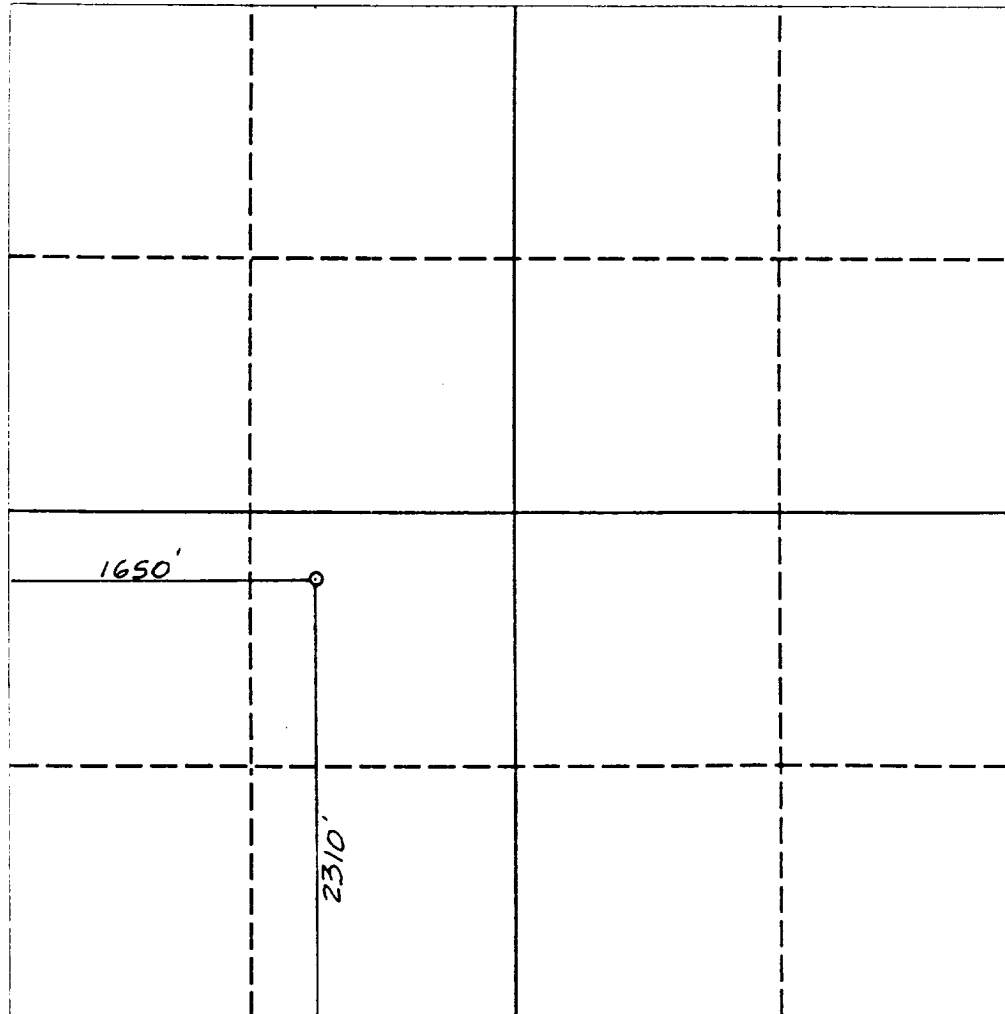
1000 Rio Brazos Rd., Aztec, NM 87410

WELL LOCATION AND ACREAGE DEDICATION PLAT

All Distances must be from the outer boundaries of the section

Operator SDX RESOURCES, INC			Lease ARTESIA METEX UNIT		Well No. 66
Unit Letter K	Section 25	Township 18 SOUTH	Range 27 EAST	County EDDY COUNTY, NM	
Actual Footage Location of Well: 1650 feet from the WEST line and 2310 feet from the SOUTH line					
Ground level Elev. 3546	Producing Formation		Pool	Dedicated Acreage: 40 Acres	

1. Outline the acreage dedicated to the subject well by colored pencil or hatchure marks on the plat below.
2. If more than one lease is dedicated to the well, outline each and identify the ownership thereof (both as to working interest and royalty).
3. If more than one lease of different ownership is dedicated to the well, have the interest of all owners been consolidated by communitization, unitization, force-pooling, etc.?
☐ Yes ☐ No If answer is "yes" type of consolidation _____
If answer is "no" list the owners and tract descriptions which have actually been consolidated. (Use reverse side of this form if necessary). _____
No allowable will be assigned to the well until all interests have been consolidated (by communitization, unitization, forced-pooling, or otherwise) or until a non-standard unit, eliminating such interest, has been approved by the Division.



OPERATOR CERTIFICATION

I hereby certify that the information contained herein is true and complete to the best of my knowledge and belief.

Signature *[Signature]*
Printed Name
John Pool
Position
Vice-President
Company
SDX RESOURCES, INC.
Date
November 13, 1992

SURVEYOR CERTIFICATION

I hereby certify that the well location shown on this plat was plotted from field notes of actual surveys made by me or under my supervision, and that the same is true and correct to the best of my knowledge and belief.

Date Surveyed
NOVEMBER 5, 1992

Signature & Seal of Professional Surveyor

