

Submit to Appropriate  
District Office  
State Lease - 6 copies  
Fee Lease - 5 copies

State of New Mexico  
Energy, Minerals and Natural Resources Department

Form C-101  
Revised 1-1-89

clh  
8/5/93  
op

DISTRICT I  
P.O. Box 1980, Hobbs, NM 88240

DISTRICT II  
P.O. Drawer DD, Artesia, NM 88210

DISTRICT III  
1000 Rio Brazos Rd., Aztec, NM 87410

OIL CONSERVATION DIVISION

P.O. Box 2088  
Santa Fe, New Mexico 87504-2088

API NO. (assigned by OCD on New Wells)

30-015-27285

5. Indicate Type of Lease

STATE ☒

FEE ☐

6. State Oil & Gas Lease No.

E-7811

JAN 19 1993

APPLICATION FOR PERMIT TO DRILL, DEEPEN, OR PLUG BACK

1a. Type of Work:

DRILL ☒

RE-ENTER ☐

DEEPEN ☐

PLUG BACK ☐

b. Type of Well:

OIL  
WELL ☐

GAS  
WELL ☒

OTHER ☐

SINGLE  
ZONE ☐

MULTIPLE  
ZONE ☐

7. Lease Name or Unit Agreement Name

Cedar Breaks "2" State

2. Name of Operator

Mewbourne Oil Company

8. Well No.

2

3. Address of Operator

P.O. Box 5270 Hobbs, New Mexico 88240

9. Pool name or Wildcat

Cedar Lake Morrow

4. Well Location

Unit Letter A : 990 Feet From The North Line and 990 Feet From The East Line

Section 2

Township 18S

Range 30E

NMPM

Eddy

County

10. Proposed Depth

11,600'

11. Formation

Morrow

12. Rotary or C.T.

Rotary

13. Elevations (Show whether DF, RT, GR, etc.)

3594' G.R.

14. Kind & Status Plug Bond

Blanket on File

15. Drilling Contractor

Peterson Drilg. Co.

16. Approx. Date Work will start

February 1, 1993

17. PROPOSED CASING AND CEMENT PROGRAM

SIZE OF HOLE	SIZE OF CASING	WEIGHT PER FOOT	SETTING DEPTH	SACKS OF CEMENT	EST. TOP
17-1/2"	13-3/8"	48#	550'±	450	Circ.
12 1/4"	9 5/8"	36#	3,600'±	1200	Tie back into Surface
7-7/8"	5-1/2"	17# & 20#	11,600'±	800	6,000'

Mud Program:

- 0 - 550' Fresh water with spud mud. Paper for LCM material  
550 - 3,600' Brine water w/LCM as needed.  
3,600 - 10,500' Cut brine with lime. Wt. 9.0-9.4 ppg WL-NC.  
10,500 - 11,600' Cut brine with Drispac, salt gel, lime & soda ash. Wt. 9.2-9.8 ppg, WL 10 cc's or less, Vis. 32-36 cp. Chlorides 100,000-120,000 ppm.

Blow-Out Preventor:

Schaffer LWS or equivalent (Double ram hydraulic) ANSI Series 1500. Hydril ANSI Series 900 Annular preventer. Rotating head, flow monitors, pit levelers and mud-gas separator from 8500' - T.D.

Gas is not dedicated.

IN ABOVE SPACE DESCRIBE PROPOSED PROGRAM: IF PROPOSAL IS TO DEEPEN OR PLUG BACK, GIVE DATA ON PRESENT PRODUCTIVE ZONE AND PROPOSED NEW PRODUCTIVE ZONE. GIVE BLOWOUT PREVENTER PROGRAM, IF ANY.

I hereby certify that the information above is true and complete to the best of my knowledge and belief.

SIGNATURE

Bill Pierce

TITLE

Drilling Superintendent

DATE

01/05/93

(505)

TYPE OR PRINT NAME

Bill Pierce

TELEPHONE NO. 393-5905

(This space for State Use)

APPROVED BY

Mark R. Kelly

TITLE

Geologist

DATE

1-19-93

CONDITIONS OF APPROVAL, IF ANY:

NSL # 3215

APPROVAL VALID FOR 180 DAYS

PERMIT EXPIRES 7-19-93

UNLESS DRILLING UNDERWAY



# OIL CONSERVATION DIVISION

P.O. Box 2088

Santa Fe, New Mexico 87504-2088

## DISTRICT I

P.O. Box 1980, Hobbs, NM 88240

## DISTRICT II

P.O. Drawer DD, Artesia, NM 88210

## DISTRICT III

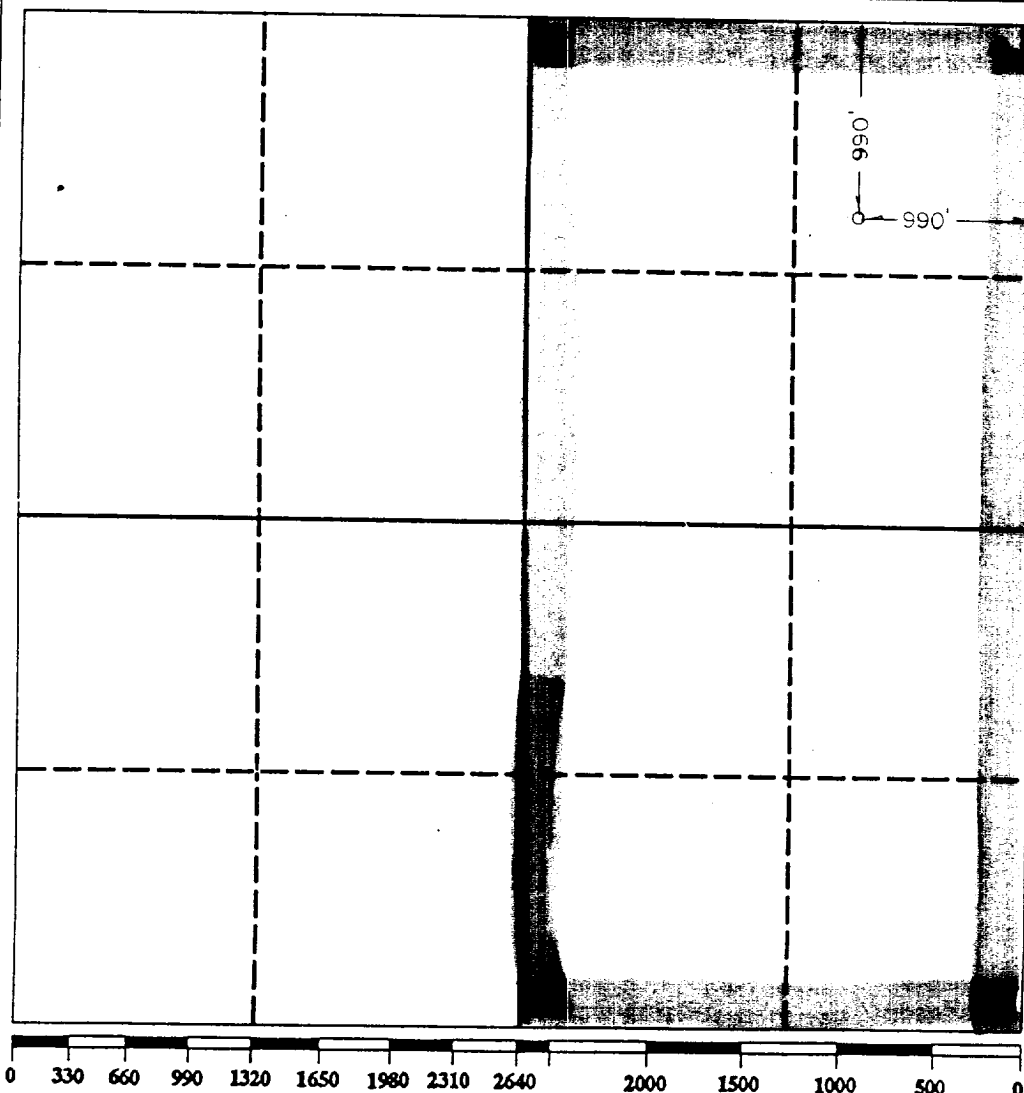
1000 Rio Brazos Rd., Aztec, NM 87410

## WELL LOCATION AND ACREAGE DEDICATION PLAT

All Distances must be from the outer boundaries of the section

Operator <b>MEWBOURNE OIL COMPANY</b>			Lease <b>CEDAR BREAKS 2 STATE</b>		Well No. <b>2</b>
Unit Letter <b>A</b>	Section <b>2</b>	Township <b>18 SOUTH</b>	Range <b>30 EAST</b>	County <b>EDDY</b>	
Actual Footage Location of Well: <b>990</b> feet from the <b>NORTH</b> line and <b>990</b> feet from the <b>EAST</b> line					
Ground level Elev. <b>3594</b>	Producing Formation <b>Morrow</b>		Pool <b>Cedar Lake Morrow</b>		Dedicated Acreage: <b>320</b> Acres

1. Outline the acreage dedicated to the subject well by colored pencil or hatchure marks on the plat below.
2. If more than one lease is dedicated to the well, outline each and identify the ownership thereof (both as to working interest and royalty).
3. If more than one lease of different ownership is dedicated to the well, have the interest of all owners been consolidated by communization, unitization, force-pooling, etc.?  
Yes ☐ No ☐ If answer is "yes" type of consolidation \_\_\_\_\_  
If answer is "no" list the owners and tract descriptions which have actually been consolidated. (Use reverse side of this form if necessary). \_\_\_\_\_  
No allowable will be assigned to the well until all interests have been consolidated (by communization, unitization, forced-pooling, or otherwise) or until a non-standard unit, eliminating such interest, has been approved by the Division.



### OPERATOR CERTIFICATION

I hereby certify that the information contained herein is true and complete to the best of my knowledge and belief.

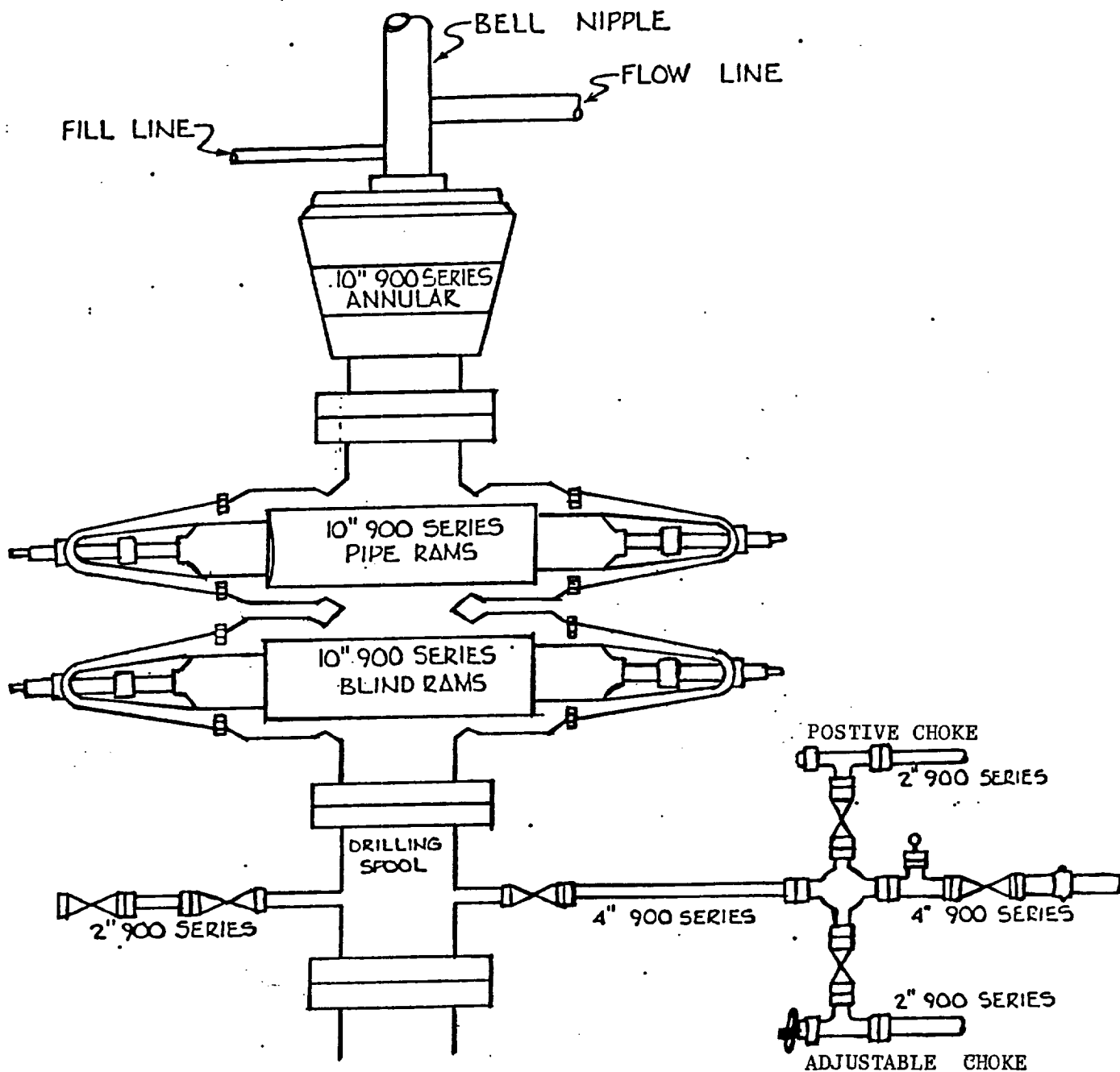
Signature <i>Bill Pierce</i>
Printed Name <b>Bill Pierce</b>
Position <b>Drilling Superintendent</b>
Company <b>Mewbourne Oil Company</b>
Date <b>October 27, 1992</b>

### SURVEYOR CERTIFICATION

I hereby certify that the well location shown on this plat was plotted from field notes of actual surveys made by me or under my supervision, and that the same is true and correct to the best of my knowledge and belief.

Date Surveyed <b>10/22/92</b>
Signature & Seal of Professional Surveyor <i>[Signature]</i> Certificate No. <b>3640</b>





MEWBOURNE OIL COMPANY  
 Cedar Breaks "2" State #2  
 990' FNL & 990' FEL  
 Sec. 2-T18S-R30E  
 Eddy County, New Mexico

