

Submit to Appropriate
District Office
State Lease - 6 copies
Fee Lease - 5 copies

State of New Mexico
Energy, Minerals and Natural Resources Department

Form C-101
Revised 1-1-89

ch
B
S
of

DISTRICT I
P.O. Box 1980, Hobbs, NM 88240

DISTRICT II
P.O. Drawer DD, Artesia, NM 88210

DISTRICT III
1000 Rio Brazos Rd., Aztec, NM 87410

OIL CONSERVATION DIVISION
P.O. Box 2088
Santa Fe, New Mexico 87504-2088

RECEIVED

JUL 15 1993

API NO. (assigned by OCD on New Wells)

30-015-27555

5. Indicate Type of Lease

STATE ☒

FEE ☐

6. State Oil & Gas Lease No.

E-7811

APPLICATION FOR PERMIT TO DRILL, DEEPEN, OR PLUG BACK

1a. Type of Work:

DRILL ☒

RE-ENTER ☐

DEEPEN ☐

PLUG BACK ☐

b. Type of Well:

OIL
WELL ☒

GAS
WELL ☐

OTHER ☐

SINGLE
ZONE ☒

MULTIPLE
ZONE ☐

7. Lease Name or Unit Agreement Name

Cedar Breaks "2" State

2. Name of Operator

Newbourne Oil Company

8. Well No.

4

3. Address of Operator

P.O. Box 5270 Hobbs, New Mexico 88241

9. Pool name or Wildcat

Walters Lake Bone Spring

4. Well Location

Unit Letter 0 : 2310 Feet From The East Line and 330 Feet From The South Line

Section 2 Township 18S Range 30E NMPM Eddy County

10. Proposed Depth

7500'

11. Formation

Bone Spring

12. Rotary or C.T.

Rotary

13. Elevations (Show whether DF, RT, GR, etc.)

3515' GR

14. Kind & Status Plug. Bond

Blanket-On File

15. Drilling Contractor

McGee Drilling Co.

16. Approx. Date Work will start

July 20, 1993

17. PROPOSED CASING AND CEMENT PROGRAM

SIZE OF HOLE	SIZE OF CASING	WEIGHT PER FOOT	SETTING DEPTH	SACKS OF CEMENT	EST. TOP
17-1/2"	13-3/8"	48#	550'	450 sks.	Circ.
12-1/4"	9-5/8"	36#	2100'	650 sks.	Tie back into Sur.
8-3/4"	5-1/2"	17#	7500'	1200 sks.	Tie back into Int.

BOP Program:

Hydril annular or equivalent (bag type preventor) 900 Series on from surface
csg. to intermediate point. Schaffer LWS or equivalent (double ram hydraulic)
900 Series BOP & 900 Series annular preventor from Int. csg. to TD

Mud Program:

0' - 550' Fresh water spud mud w/gel. LCM as needed.
550' - 2100' Brine water, lime and LCM as needed.
2100' - 6600' Cut brine, lime and LCM as needed, Wt. 9.0-9.6 ppg.
6600' - 7500' Cut brine, lime, soda ash, caustic soda, starch, and LCM
if needed. Wt. 9.0-9.6 ppg, WL 10 cc or less, Vis. 30-34.

10-1
7-16-93
MCT/PT

IN ABOVE SPACE DESCRIBE PROPOSED PROGRAM: IF PROPOSAL IS TO DEEPEN OR PLUG BACK, GIVE DATA ON PRESENT PRODUCTIVE ZONE AND PROPOSED NEW PRODUCTIVE ZONE. GIVE BLOWOUT PREVENTER PROGRAM, IF ANY

I hereby certify that the information above is true and complete to the best of my knowledge and belief.

SIGNATURE

Bill Pierce

TITLE

Drilling Superintendent

DATE 06/11/93

(505)

TYPE OR PRINT NAME

Bill Pierce

TELEPHONE NO. 393-5905

(This space for State Use)

APPROVED BY

Mark Kahley

TITLE

GEOLOGIST

DATE 7-15-93

CONDITIONS OF APPROVAL, IF ANY:

APPROVAL VALID FOR 180 DAYS
PERMIT EXPIRES 1-15-94
UNLESS DRILLING UNDERWAY

OIL CONSERVATION DIVISION

P.O. Box 2088

Santa Fe, New Mexico 87504-2088

DISTRICT I

P.O. Box 1980, Hobbs, NM 88240

DISTRICT II

P.O. Drawer DD, Artesia, NM 88210

DISTRICT III

1000 Rio Brazos Rd., Aztec, NM 87410

WELL LOCATION AND ACREAGE DEDICATION PLAT

All Distances must be from the outer boundaries of the section

Operator MEWBOURNE OIL COMPANY			Lease CEDAR BREAKS 2 STATE		Well No. 4
Unit Letter 0	Section 2	Township 18 SOUTH	Range 30 EAST	County NMPM EDDY	
Actual Footage Location of Well: 2310 feet from the EAST line and 330 feet from the SOUTH line					
Ground level Elev. 3515	Producing Formation Bone Spring		Pool Walters Lake Bone Spring		Dedicated Acreage: 40 Acres

1. Outline the acreage dedicated to the subject well by colored pencil or hatchure marks on the plat below.

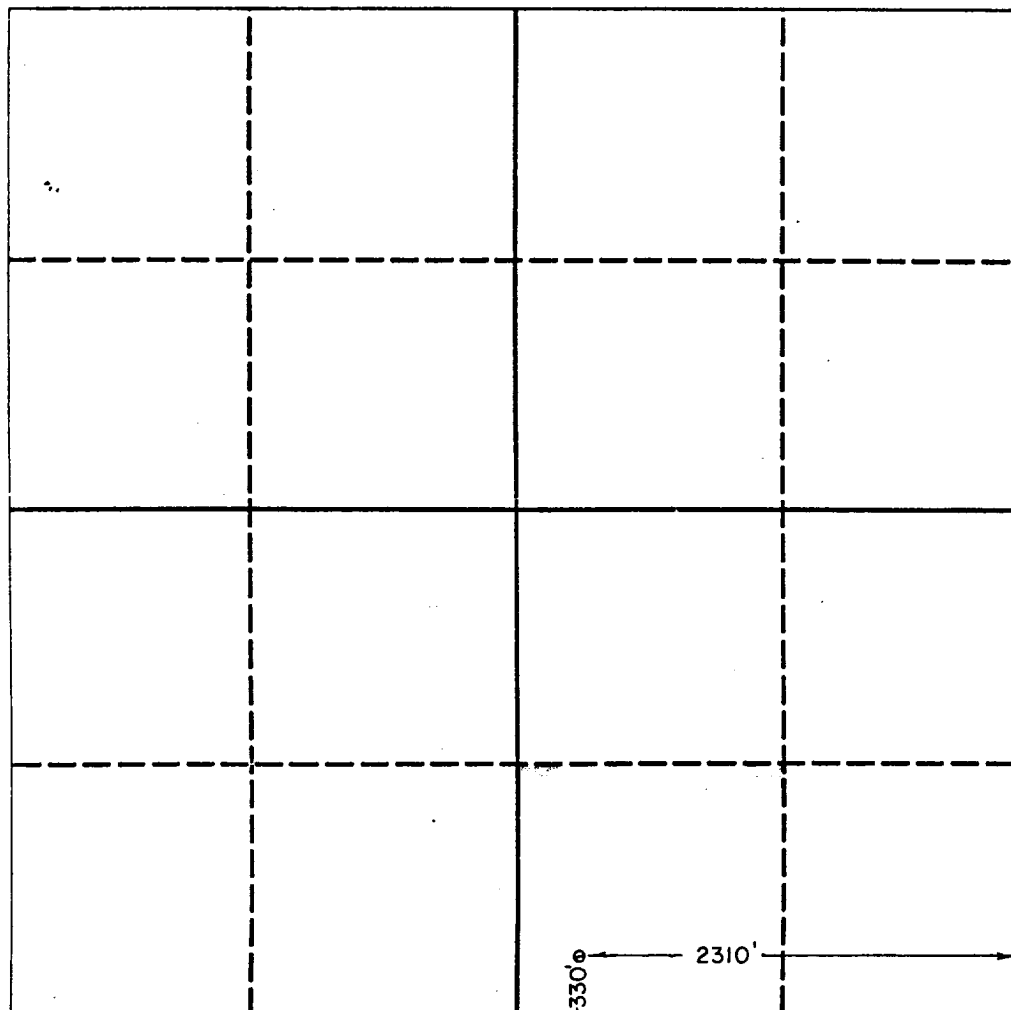
2. If more than one lease is dedicated to the well, outline each and identify the ownership thereof (both as to working interest and royalty).

3. If more than one lease of different ownership is dedicated to the well, have the interest of all owners been consolidated by communitization, unitization, force-pooling, etc.?

☐ Yes ☐ No If answer is "yes" type of consolidation _____

If answer is "no" list the owners and tract descriptions which have actually been consolidated. (Use reverse side of this form if necessary.) _____

No allowable will be assigned to the well until all interests have been consolidated (by communitization, unitization, forced-pooling, or otherwise) or until a non-standard unit, eliminating such interest, has been approved by the Division.



OPERATOR CERTIFICATION

I hereby certify that the information contained herein is true and complete to the best of my knowledge and belief.

Signature <i>Bill Pierce</i>
Printed Name Bill Pierce
Position Drilling Supt.
Company Mewbourne Oil Co.
Date June 11, 1993

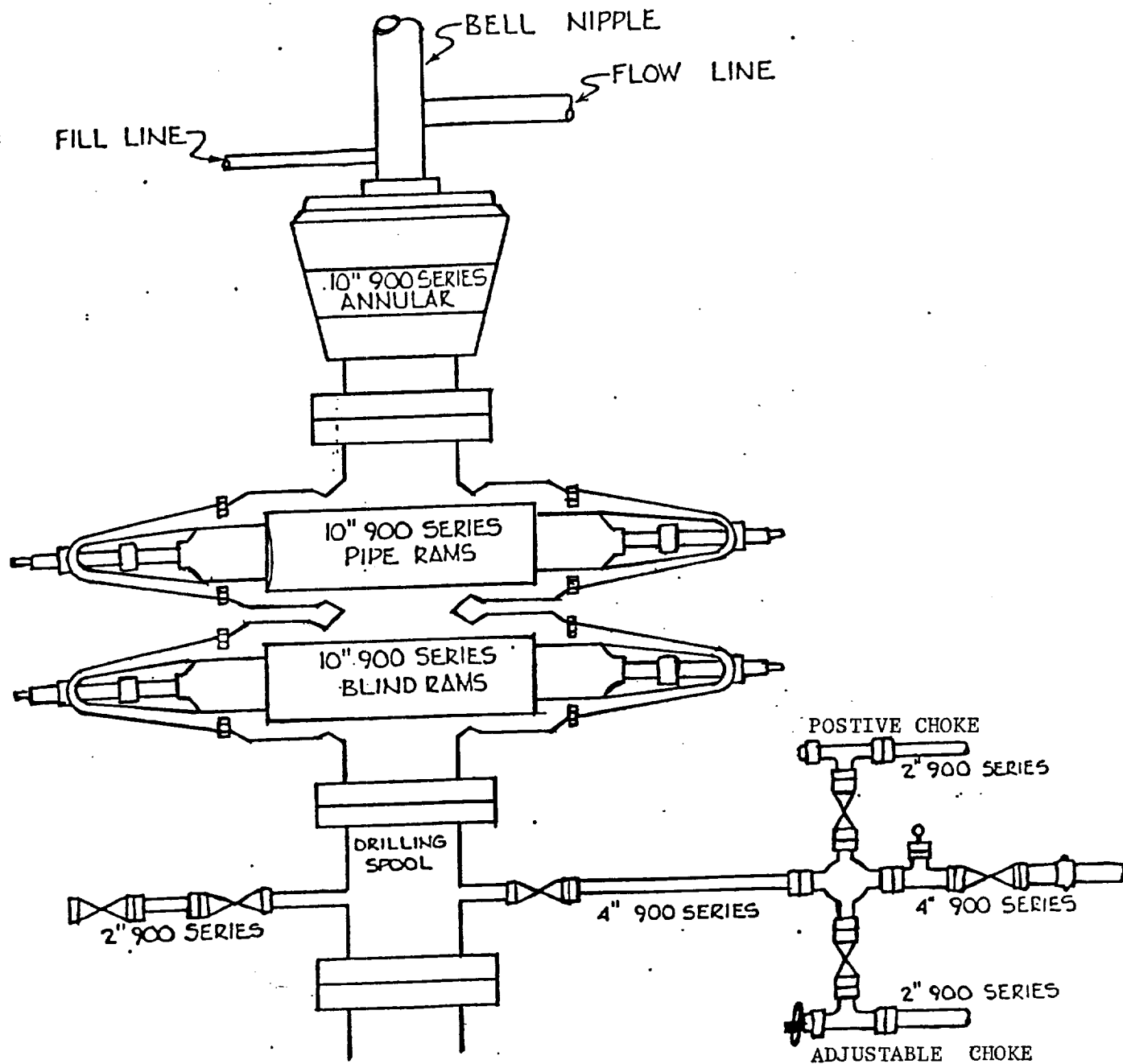
SURVEYOR CERTIFICATION

I hereby certify that the well location shown on this plat was plotted from field notes of actual surveys made by me or under my supervision, and that the same is true and correct to the best of my knowledge and belief.

Date Surveyed 6/08/93
Signature & Seal of Professional Surveyor <i>Herschel L. Jones</i> HERSCHEL L. JONES 3640
Certificate No. 3640

0 330 660 990 1320 1650 1980 2310 2640 2000 1500 1000 500 0

BOP SCHEMATIC



Mewbourne Oil Company
 Cedar Breaks "2" State #4
 2310' FEL & 330' FSL
 Section 2-T18S-R30E
 Eddy County, New Mexico
 Lease # E-7811

