

DISTRICT I
P. O. Box 1980
Hobbs, NM 88241-1980

State of New Mexico
Energy, Minerals, and Natural Resources Department

Form C-102
Revised 02-10-94

Instructions on back

DISTRICT II
P. O. Drawer DD
Artesia, NM 88211-0719

OIL CONSERVATION DIVISION

P. O. Box 2088
Santa Fe, New Mexico 87504-2088

Submit to the Appropriate
District Office
State Lease - 4 copies
Fee Lease - 3 copies

DISTRICT III
1000 Rio Brazos Rd.
Aztec, NM 87410

☐ AMENDED REPORT

DISTRICT IV
P. O. Box 2088
Santa Fe, NM 87507-2088

78890 Undes. Illinois Camp; Mcarrow, North
WELL LOCATION AND ACREAGE DEDICATION PLAT

1 API Number 30-015-28852	2 Pool Code 78890	3 Pool Name Empire, Mcarrow, South (G)
4 Property Code	5 Property Name EMPIRE '5' STATE COM.	6 Well Number 1
7 OGRID No. 7377	8 Operator Name ENRON OIL & GAS COMPANY	9 Elevation 3640'

10 SURFACE LOCATION

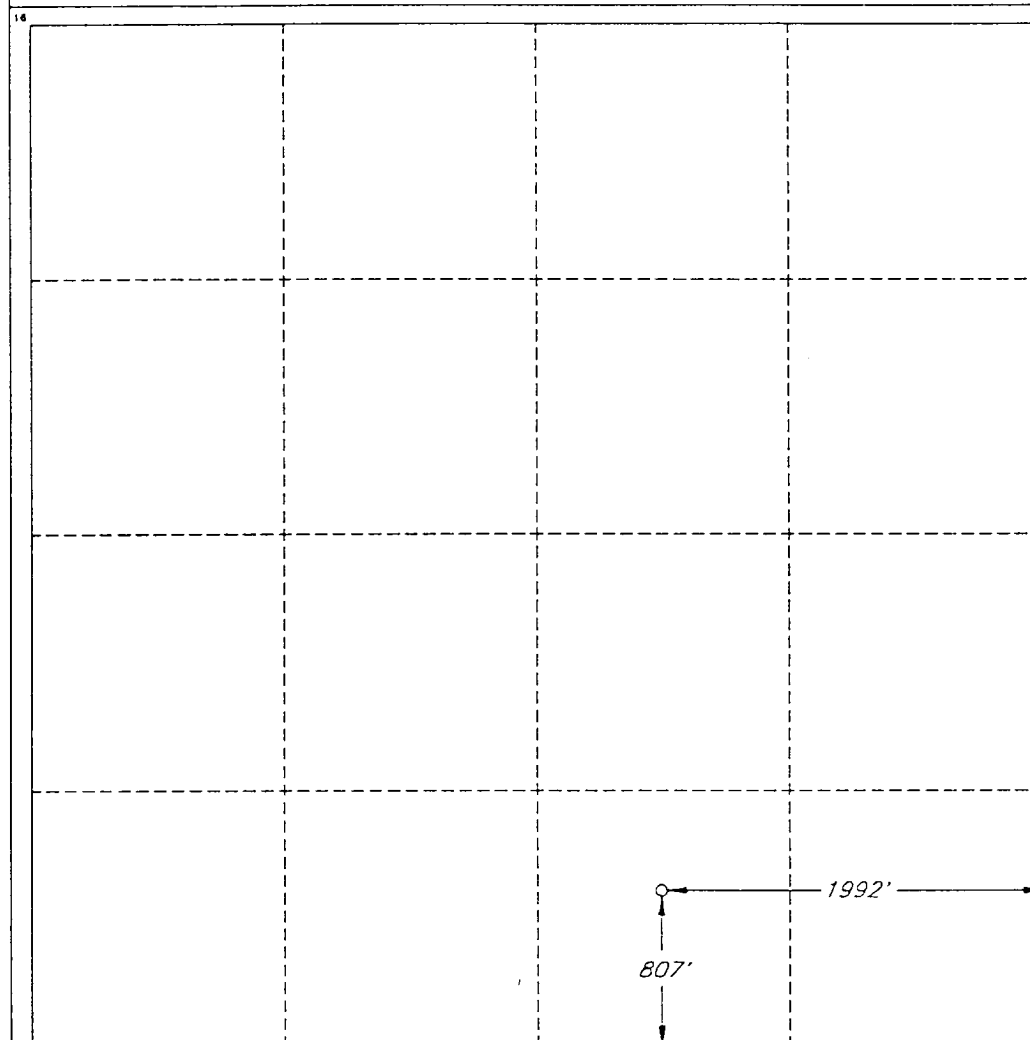
UL or lot no.	Section	Township	Range	Lot Ida	Feet from the	North/South line	Feet from the	East/West line	County
0	5	18 SOUTH	28 EAST, N.M.P.M.		807'	SOUTH	1992'	EAST	EDDY

"BOTTOM HOLE LOCATION IF DIFFERENT FROM SURFACE

UL or lot no.	Section	Township	Range	Lot Ida	Feet from the	North/South line	Feet from the	East/West line	County

12 Dedicated Acres S/2 320	13 Joint or Infill	14 Consolidation Code	15 Order No.
-------------------------------	--------------------	-----------------------	--------------

NO ALLOWABLE WELL BE ASSIGNED TO THIS COMPLETION UNTIL ALL INTERESTS HAVE BEEN CONSOLIDATED OR A NON-STANDARD UNIT HAS BEEN APPROVED BY THE DIVISION



OPERATOR CERTIFICATION

I hereby certify that the information contained herein is true and complete to the best of my knowledge and belief.

Signature

Printed Name
Betty Gildon

Title

Regulatory Analyst

Date

2/27/96

SURVEYOR CERTIFICATION

I hereby certify that the well location shown on this plat was plotted from field notes of actual surveys made by me or under my supervision, and that the same is true and correct to the best of my belief.

Date of Survey

FEBRUARY 9, 1996

Signature and Seal of Professional Surveyor

V. LYNN
BEZNER
NO. 7920

Certification No.
V. L. BEZNER, Professional Surveyor, #7920

JOB #43594 - 1/2 SW / V.H.B.