

District I  
PO Box 1980, Hobbs, NM 88241-1980  
  
District II  
PO Drawer DD, Artesia, NM 88211-0719  
  
District III  
1000 Rio Brazos Rd., Aztec, NM 87410  
  
District IV  
PO Box 2088, Santa Fe, NM 87504-2088

State of New Mexico  
Energy, Minerals & Natural Resources Department

OIL CONSERVATION DIVISION  
PO Box 2088  
Santa Fe, NM 87504-2088

Form C-101  
Revised February 10, 1994  
Instructions on back  
Submit to Appropriate District Office  
State Lease - 6 Copies  
Fee Lease - 5 Copies

☐ AMENDED REPORT

APPLICATION FOR PERMIT TO DRILL, RE-ENTER, DEEPEN, PLUGBACK, OR ADD A ZONE

<sup>2</sup> Operator Name and Address. Devon Energy Corporation (Nevada) 1500 Mid America Tower 20 N. Broadway Oklahoma City, OK 73102-8260		<sup>1</sup> OGRID Number 6137
<sup>4</sup> Property Code 3491		<sup>3</sup> API Number 30-015 - 28874
<sup>5</sup> Property Name West Red Lake Unit		<sup>6</sup> Well No. 66

<sup>7</sup> Surface Location									
UL or lot no. 7	Section 6	Township 18S	Range 27E	Lot Ids	Feet from the 230	North/South line South	Feet from the 330	East/West line West	County Eddy

<sup>8</sup> Proposed Bottom Hole Location If Different From Surface									
UL or lot no.	Section	Township	Range	Lot Ids	Feet from the	North/South line	Feet from the	East/West line	County
<sup>9</sup> Proposed Pool 1 Red Lake (Q-GB-SA)					<sup>10</sup> Proposed Pool 2				
51300					Post ID-1 3-22-96 New Log & PAP				

<sup>11</sup> Work Type Code N	<sup>12</sup> Well Type Code O	<sup>13</sup> Cable/Rotary Rotary	<sup>14</sup> Lease Type Code P	<sup>15</sup> Ground Level Elevation 3292'
<sup>16</sup> Multiple No	<sup>17</sup> Proposed Depth 2100'	<sup>18</sup> Formation San Andres	<sup>19</sup> Contractor to be determined	<sup>20</sup> Spud Date March 1, 1996

<sup>21</sup> Proposed Casing and Cement Program					
Hole Size	Casing Size	Casing weight/feet	Setting Depth	Sacks of Cement	Estimated TOC
17 1/2"	13 3/8"	Conductor	200'	275 sx "C"	surface
12 1/4"	8 5/8"	24 ppf	900'	300 Lite, 200 "C"	surface
7 7/8"	5 1/2"	15.5 ppf	2100'	100 Lite, 200 "C"	surface

<sup>22</sup> Describe the proposed program. If this application is to DEEPEN or PLUG BACK give the data on the present productive zone and proposed new productive zone. Describe the blowout prevention program, if any. Use additional sheets if necessary.  
We plan to drill this well to a total depth of +/- 2100' and complete it as a West Red Lake Unit developmental well. If the well is deemed non-commercial, then it will be plugged and abandoned in accordance with the rules established by the OCD of New Mexico. BOP's will be installed while drilling the production hole.

Notary N.M.O.C.C. in sufficient  
time to witness cementing  
the 8 5/8" casing

<sup>23</sup> I hereby certify that the information given above is true and complete to the best of my knowledge and belief.		OIL CONSERVATION DIVISION	
Signature: <i>E. L. Buttross Jr.</i>		Approved by: ORIGINAL SIGNED BY TIM W. GUM	
Printed name: E. L. Buttross Jr.		Title: DISTRICT II SUPERVISOR	
Title: District Engineer		Approval Date: 3-14-96	Expiration Date: 3-14-97
Date: 02-21-96 /cg	Phone: (405) 235-3611 X 4509	Conditions of Approval:	
		Attached <input type="checkbox"/>	

DISTRICT I  
P.O. Box 1980, Hobbs, NM 88240

State of New Mexico  
Energy, Minerals and Natural Resources Department

Form C-102  
Revised February 10, 1994  
Instruction on back  
Submit to Appropriate District Office  
State Lease - 4 Copies  
Fee Lease - 3 Copies

DISTRICT II  
P.O. Drawer DD, Artesia, NM 88210

DISTRICT III  
1000 Rio Brazos Rd., Artec, NM 87410

OIL CONSERVATION DIVISION

P.O. Box 2088  
Santa Fe, New Mexico 87504-2088

☐ AMENDED REPORT

WELL LOCATION AND ACREAGE DEDICATION PLAT

API Number 30-015-28874	Pool Code 51300	Pool Name Red Lake (Q-GB-SA)
Property Code 3491	Property Name West Red Lake Unit	Well Number 66
OGRID No. 6137	Operator Name Devon Energy Corporation (Nevada)	Elevation 3292'

Surface Location

UL or lot No. Lot 7	Section 6	Township 18 S	Range 27 E	Lot Idn	Feet from the 230	North/South line South	Feet from the 330	East/West line West	County Eddy
------------------------	--------------	------------------	---------------	---------	----------------------	---------------------------	----------------------	------------------------	----------------

Bottom Hole Location If Different From Surface

UL or lot No.	Section	Township	Range	Lot Idn	Feet from the	North/South line	Feet from the	East/West line	County
Dedicated Acres 40	Joint or Infill	Consolidation Code	Order No.						

NO ALLOWABLE WILL BE ASSIGNED TO THIS COMPLETION UNTIL ALL INTERESTS HAVE BEEN CONSOLIDATED  
OR A NON-STANDARD UNIT HAS BEEN APPROVED BY THE DIVISION

Lot 4	Lot 3	Lot 2	Lot 1
Lot 5			
Lot 6			
Lot 7			

Lot 7

330'

230'

OPERATOR CERTIFICATION

I hereby certify the the information contained herein is true and complete to the best of my knowledge and belief.

E. L. Buttross, Jr.  
Signature

E.L. Buttross, Jr.  
Printed Name

District Engineer  
Title

February 22, 1996  
Date

SURVEYOR CERTIFICATION

I hereby certify that the well location shown on this plat was plotted from field notes of actual surveys made by me or under my supervision, and that the same is true and correct to the best of my belief.

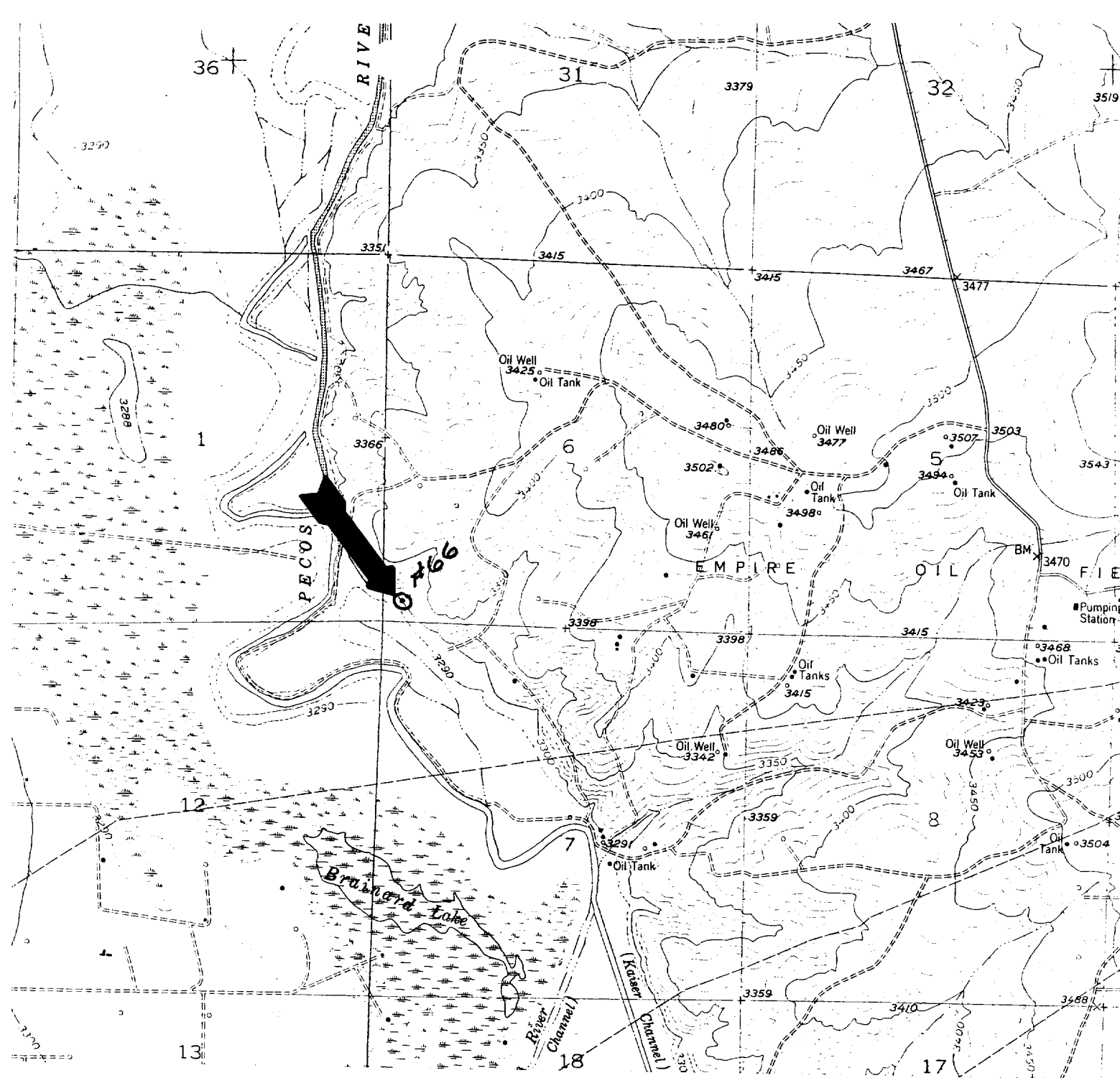
January 25, 1996  
Date Surveyed

[Signature]  
Signature & Seal of Professional Surveyor

W.O. No. 6010b

Certificate No. Gary L. Jones 7977

Basin Surveys



Devon Energy Corporation  
 West Red Lake Unit #66  
 230' FSL & 330 FWL  
 Sec. 6, T-18-S, R-27-E,  
 Eddy County, New Mexico.



SCALE: 1"=2000'



BASIN SURVEYS P.O. BOX 1786 - HOBBS, NEW MEXICO

W.O. Number: 6010	Drawn By: S.C. Nichols	Survey Date: 01-25-96	Sheet 1 of 1 Sheets
-------------------	------------------------	-----------------------	---------------------