

UNITED STATES  
DEPARTMENT OF THE INTERIOR  
BUREAU OF LAND MANAGEMENT  
OIL CONSERVATION DIVISION  
811 S. 1st ST.  
ALBUQUERQUE, NM 88210-2834

## APPLICATION FOR PERMIT TO DRILL OR DEEPEN

## 1a. TYPE OF WORK

DRILL ☒DEEPEN ☐

## b. TYPE OF WELL

OIL WELL ☒ GAS WELL ☐ OTHER ☐SINGLE ZONE ☐ MULTIPLE ZONE ☐

## 2. NAME OF OPERATOR

The Wiser Oil Company (22922)

## 3. ADDRESS AND TELEPHONE NO.

c/o J. O. Easley, Inc., P. O. Box 1796, Roswell, NM 88201-1796 (505) 623-3758

## 4. LOCATION OF WELL (Report location clearly and in accordance with any State requirements. \*)

At Surface 1310' FNL &amp; 1330' FEL, Unit B UNORTH. LOC.

At proposed prod. Zone 1310' FNL &amp; 1330' FEL, Unit B

## 14. DISTANCE IN MILES AND DIRECTION FROM NEAREST TOWN OR POST OFFICE \*

± 6.1 miles southwest of Maljamar, NM

15. DISTANCE FROM PROPOSED \*  
LOCATION TO NEAREST

PROPERTY OR LEASE LINE, FT. 1310'

(Also to nearest drlg. unit line, if any)

## 18. DISTANCE FROM PROPOSED LOCATION \*

TO NEAREST WELL, DRILLING, COMPLETED 918.6'

OR APPLIED FOR, ON THIS LEASE, FT.

## 21. ELEVATIONS (Show whether DF, RT, GR, etc.)

3827'

## 23. PROPOSED CASING AND CEMENTING PROGRAM

SIZE OF HOLE	GRADE, SIZE OF CASING	WEIGHT PER FOOT	SETTING DEPTH	QUANTITY OF CEMENT
12 1/4"	8 5/8" 8RD ST&C J-55	20#	400'	Circulate
7 7/8"	5 1/2" J-55	17#	4800'	Sufficient to bring cmt 100'
				above 8 5/8" casing shoe.

Duration of Program: Drilling - Nine (9) days  
Completion - Thirty (30) days  
See attached for complete Drilling Program

## EXHIBITS

Exhibit "A": Drilling Program

Exhibit "D": Land Survey Plat

Exhibit "G": Rig Layout

Exhibit "B": H<sub>2</sub>S Plan

Exhibit "E": Vicinity Plat

Exhibit "H": BOP Layout

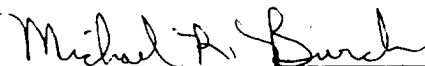
Exhibit "C": Surface Use Plan

Exhibit "F": Existing Well Plat

IN ABOVE SPACE DESCRIBE PROPOSED PROGRAM: If proposal is to deepen, give data on present productive zone and proposed new productive zone. If proposal is to drill or deepen directionally, give pertinent data on subsurface locations and measured and true vertical depths. Give blowout preventer program, if any.

## 24.

SIGNED



TITLE

Agent for The Wiser Oil Company

DATE 9-12-96

Michael R. Burch, CPL

(This space for Federal or State office use)

PERMIT NO.

APPROVAL DATE

Application approval does not warrant or certify that the applicant holds legal or equitable title to those rights in the subject lease which would entitle the applicant to conduct operations thereon.

CONDITIONS OF APPROVAL, IF ANY:

APPROVED BY

Timothy P. O'Brien

TITLE

Acting Area Manager

DATE

OCT 11 1996

\*See Instructions On Reverse Side

Title 18 U.S.C. Section 1001, makes it a crime for any person knowingly and willfully to make to any department or agency of the United States any false, fictitious or fraudulent statements or representations as to any matter within its jurisdiction.

## EXHIBIT "D"

## DISTRICT I

P.O. Box 1980, Hobbs, NM 88241-1980

State of New Mexico

Energy, Minerals and Natural Resources Department

Form C-102

Revised February 10, 1994

Submit to Appropriate District Office

State Lease - 4 Copies

Fee Lease - 3 Copies

## DISTRICT II

P.O. Drawer DD, Artesia, NM 88211-0719

## DISTRICT III

1000 Rio Brazos Rd., Aztec, NM 87410

## DISTRICT IV

P.O. BOX 2088, SANTA FE, N.M. 87504-2088

## OIL CONSERVATION DIVISION

P.O. Box 2088

Santa Fe, New Mexico 87504-2088

☐ AMENDED REPORT

## WELL LOCATION AND ACREAGE DEDICATION PLAT

API Number 30-015-29226	Pool Code 28509	Pool Name Grayburg Jackson 7-Rivers QN GB SA
Property Code 017540	Property Name SKELLY UNIT "B"	Well Number 278
OGRID No. 022922	Operator Name THE WISER OIL COMPANY	Elevation 3827'

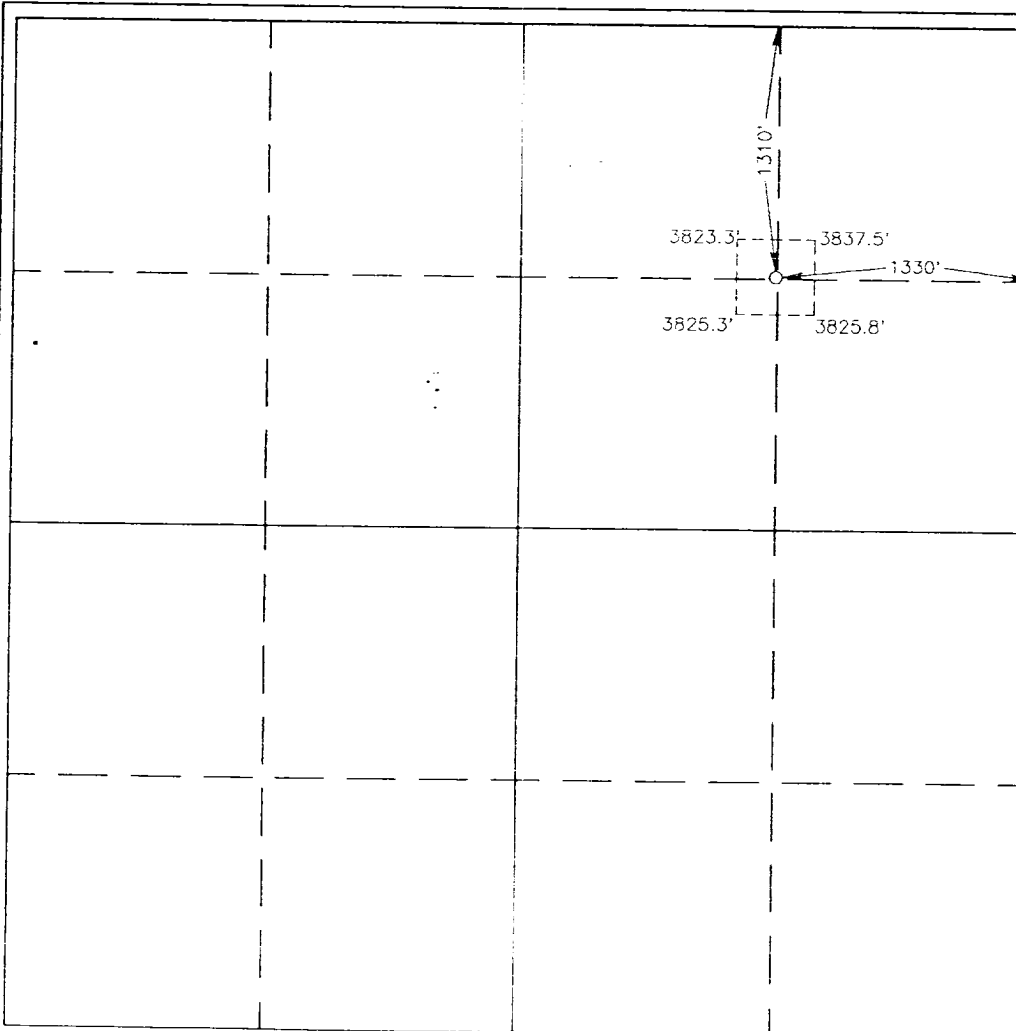
## Surface Location

UL or lot No.	Section	Township	Range	Lot Idn	Feet from the	North/South line	Feet from the	East/West line	County
B	27	17 S	31 E		1310	NORTH	1330	EAST	EDDY

## Bottom Hole Location If Different From Surface

UL or lot No.	Section	Township	Range	Lot Idn	Feet from the	North/South line	Feet from the	East/West line	County
Dedicated Acres 40	Joint or Infill	Consolidation Code	Order No.						

NO ALLOWABLE WILL BE ASSIGNED TO THIS COMPLETION UNTIL ALL INTERESTS HAVE BEEN CONSOLIDATED  
OR A NON-STANDARD UNIT HAS BEEN APPROVED BY THE DIVISION



## OPERATOR CERTIFICATION

I hereby certify the the information contained herein is true and complete to the best of my knowledge and belief.

*Michael R. Burch*  
Signature Michael R. Burch, CPL

Printed Name Agent for The Wisser Oil  
Title Company  
Date 4-5-96

Date

## SURVEYOR CERTIFICATION

I hereby certify that the well location shown on this plat was plotted from field notes of actual surveys made by me or under my supervision, and that the same is true and correct to the best of my belief.

AUGUST 19, 1996

Date Surveyed 8-22-96 CDG  
Signature John R. Eppson  
Professional Surveyor

*John R. Eppson*  
Professional Surveyor  
Certificate No. 3238 8-22-96  
6/6  
3239  
17641

# BOP & CHOKE MANIFOLD

12"/900 Cameron SS Space Saver  
 3000# Working Pressure  
 3000# Working Pressure Choke Manifold

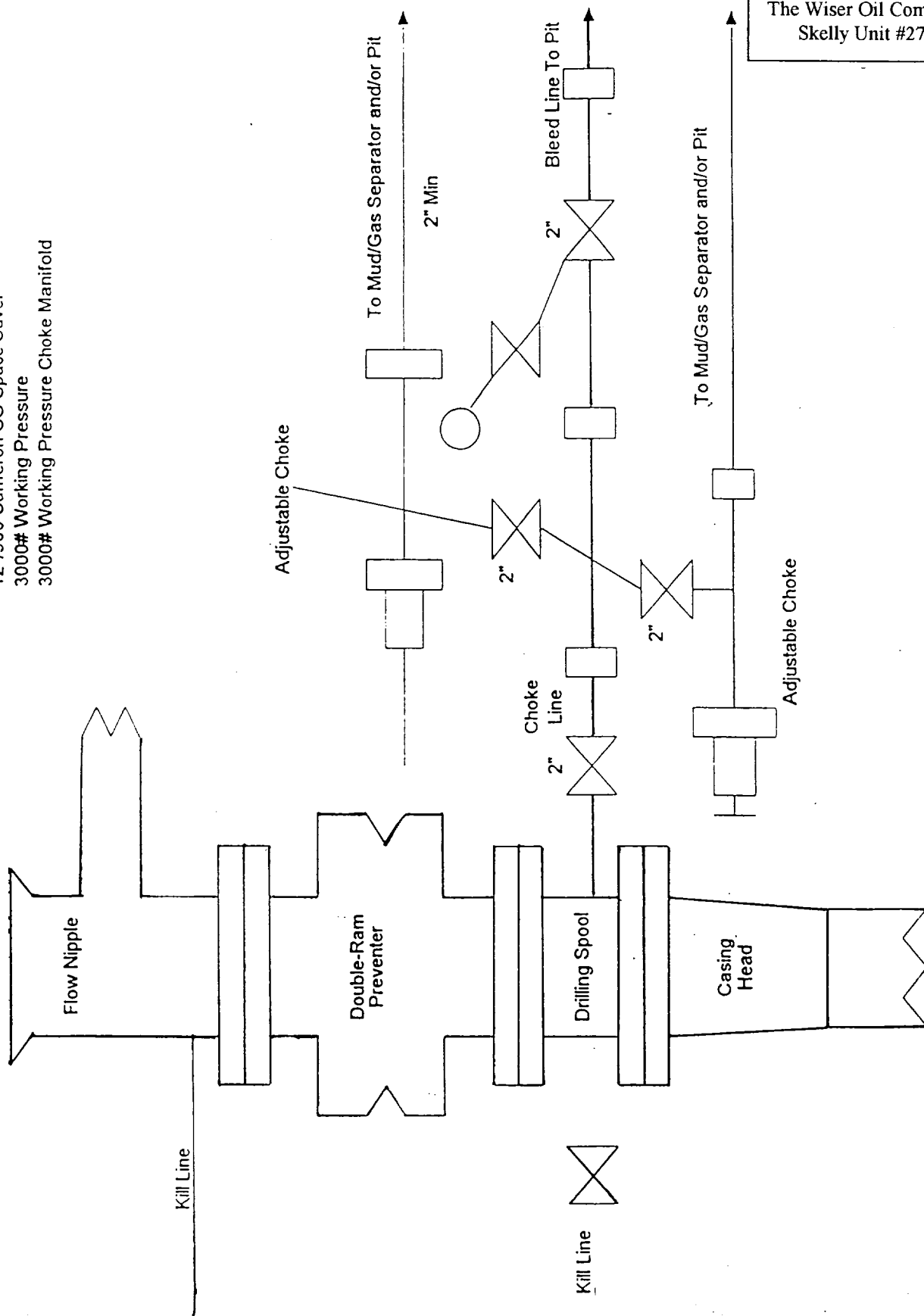


EXHIBIT "H"

BOP LAYOUT

The Wiser Oil Company  
 Skelly Unit #278