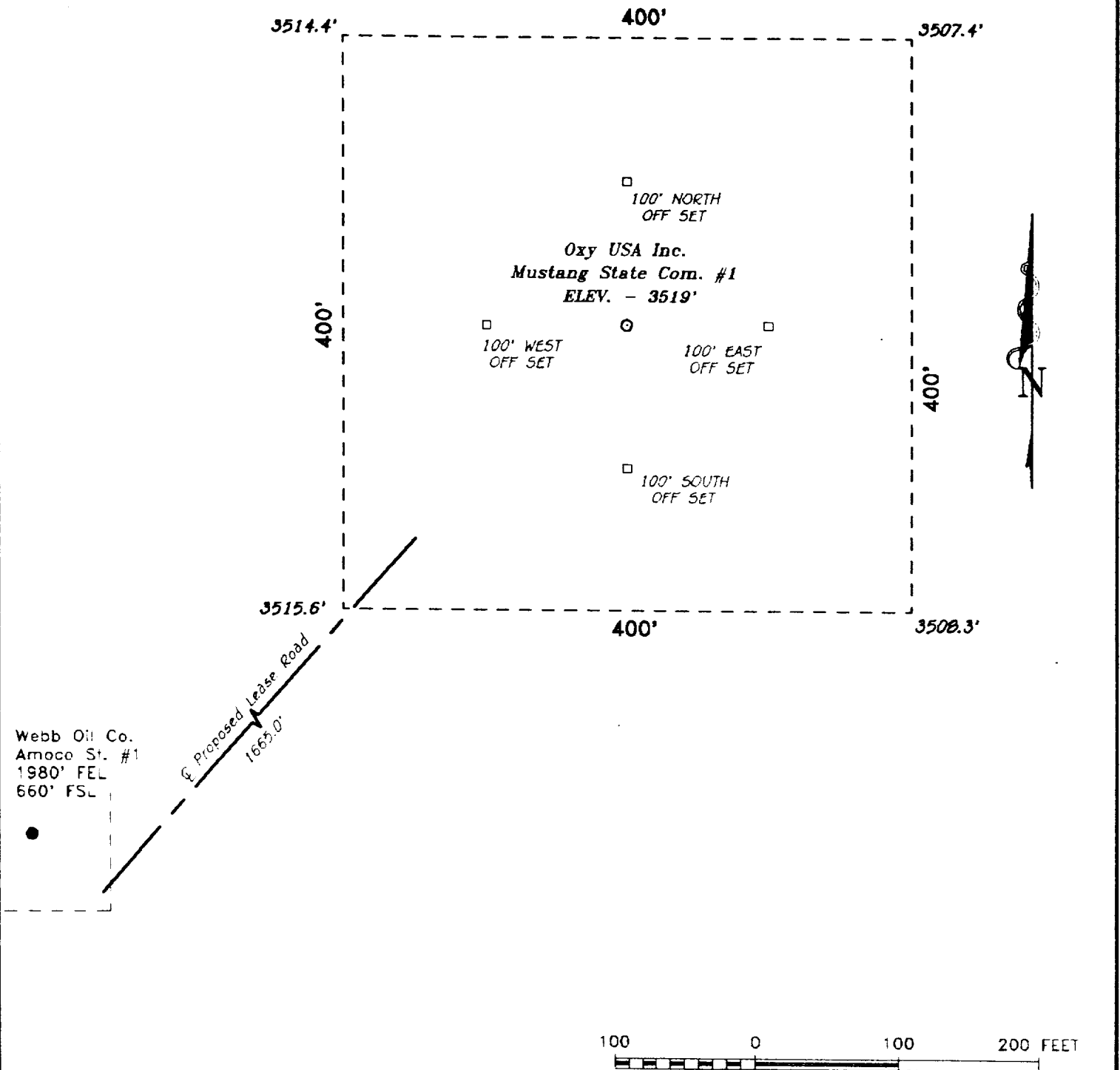


SECTION 16, TOWNSHIP 18 SOUTH, RANGE 29 EAST, N.M.P.M.,
EDDY COUNTY, NEW MEXICO.



BASIN SURVEYS P.O. BOX 1786 - HOBBS, NEW MEXICO

W.O. Number: 7043 Drawn By: S.C. NICHOLS

Date: 02-03-97 Disk: SCN #34 - 7043AA.DWG

OXY USA INC

REF: MUSTANG STATE COM. No. 1 / WELL PAD TOPO

THE MUSTANG STATE COM. No. 1 LOCATED 1980' FROM
THE SOUTH LINE AND 660' FROM THE EAST LINE OF
SECTION 16, TOWNSHIP 18 SOUTH, RANGE 29 EAST,
N.M.P.M., EDDY COUNTY, NEW MEXICO.

Survey Date: 02-01-97 Sheet 1 of 1 Sheets